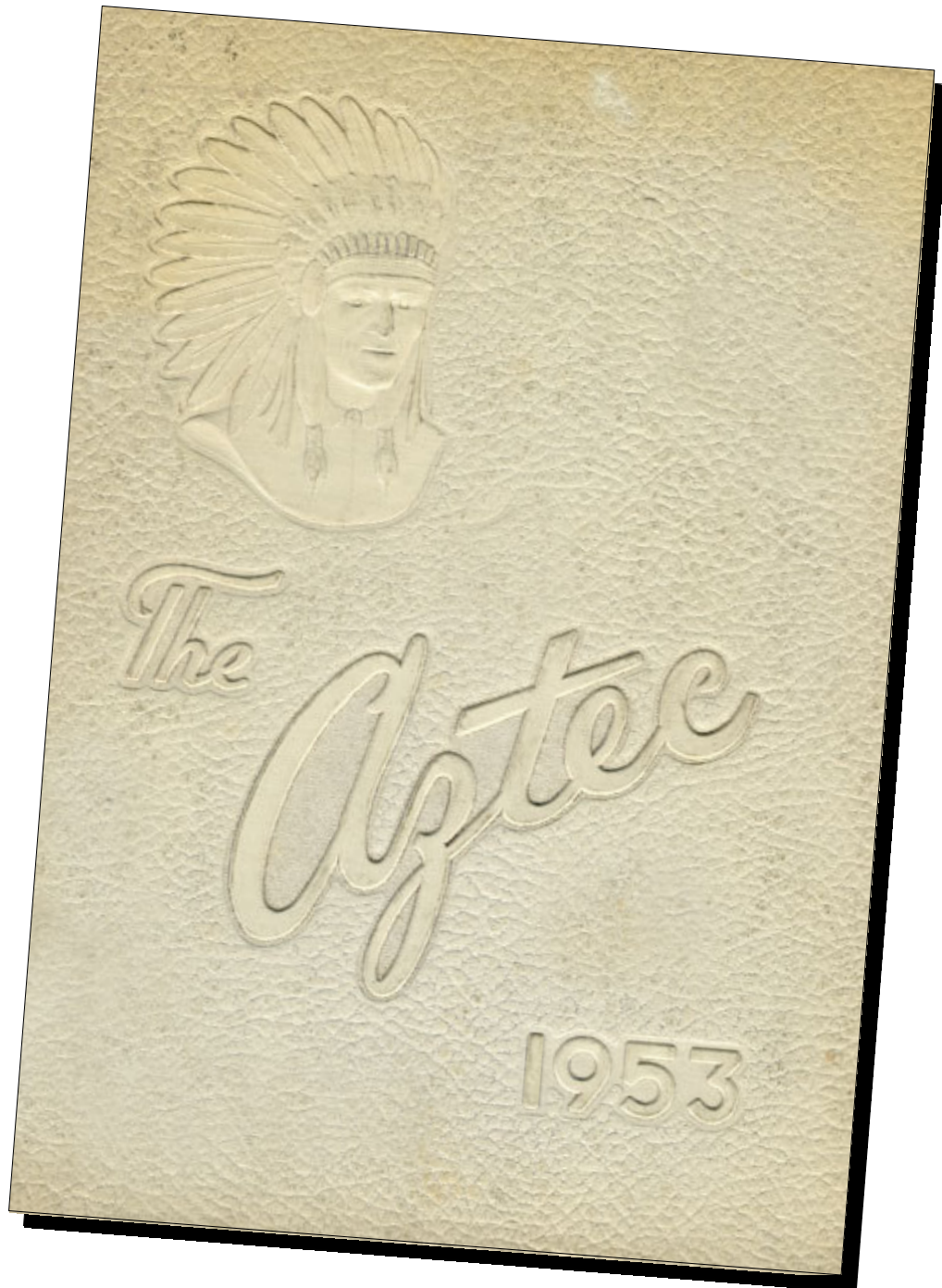


*1951 Montezuma Annual  
Part 1 of 3*



Note: The annual from which these images were taken is housed in the Montezuma Public Library, Montezuma, IN. Images were scanned by Mike Lewman (mblewman@yahoo.com), November 2007.



John Bland  
High School Principal

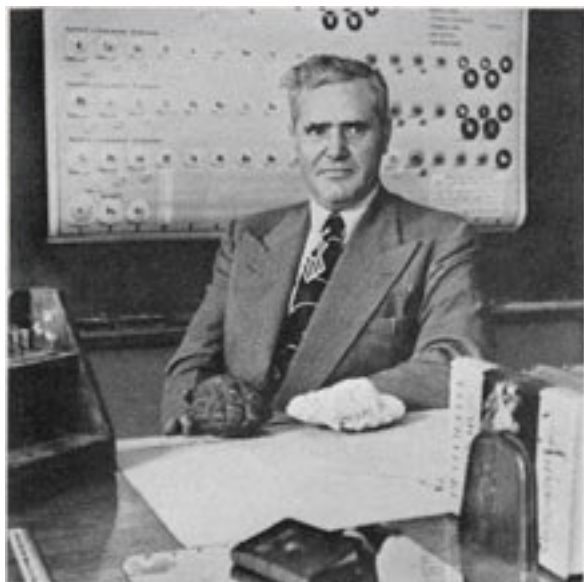


Ted Plank

Township  
Trustee

James W. Conlin  
County Superintendent





Roy Davidson  
Indiana State  
A. B. & M. A.

SCIENCE

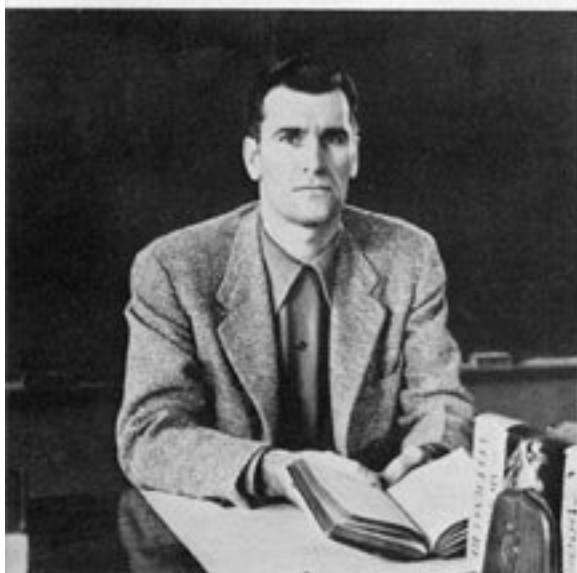


John Hupp  
Indiana University  
Ball State

MUSIC

ATHLETICS

Walter Richeson  
Indiana State B. S.



INDUSTRIAL ARTS

Darrell Mathas  
Indiana State.  
B. S. 1949





Frank Hill  
Central N. C. B. S.  
Indiana University M. S.

COMMERCE



Estelline Beatty  
Indiana State  
Indiana University

ENGLISH

HOME ECONOMICS

Barbara Mathas  
Indiana State  
B. S. 1951



SOCIAL STUDIES

William Guthrie  
Wabash  
A. B. 1950





- Charles Blackford--Commercial, Track  
Basketball, Baseball

Carole Sue Burgett--Commercial, Band  
Chorus.



- Gail Edwards--Academic, Basketball,  
Baseball, Track.

Ruby Latin--Commercial, Basketball



Robert Jones--Academic, Chorus, Trac

Marilyn Phillips--Commercial, Chorus  
School Paper, Band  
Basketball.





Robert Kelsey--Academic, Band.

Joan Plank--Commercial, Basketball  
School Paper.



DeElda Payton--Academic, Basketball  
Track.

Joan Rennick--Commercial, School Paper  
Band, Chorus



David Dean Roberts--Academic, Pres  
Band, Chorus.

Laura Lou Skeeters--Commercial, Cheer leader  
Band, Chorus

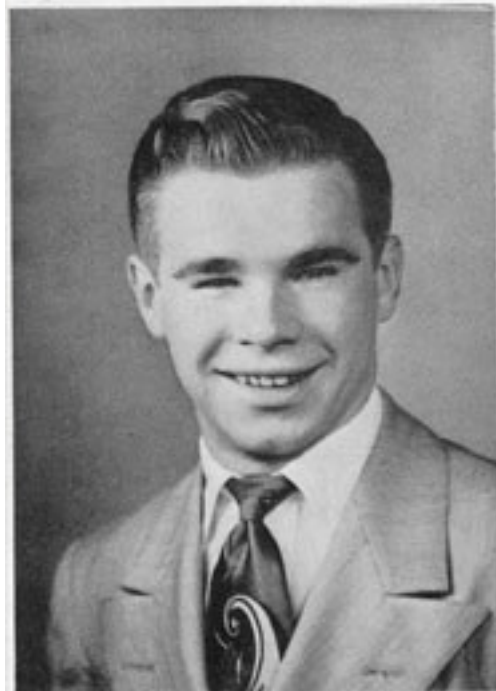






-John Ryan--Commercial, Basketball,  
Baseball, Track.

lian Varvel--Commercial, School Paper  
Basketball, Chorus, Band.



- Artie Smith--Commercial

Mona Lee Walters--Commercial, Chorus,  
Orotory, D. A. R.



Howard D. Smith--Industrial Arts

Dixie Whitten--Commercial, Band, Chorus  
School Paper, Basketball.





-Hershhal Waldridge--Commercial, Track,  
Baseball, Chorus.



-Barbara Wilburn--Commercial, Chorus



-Don Williamson--Industrial Arts, Track,  
Basketball, Baseball.