

# *1948 Montezuma Annual*

## *Part 1 of 3*



Note: The annual from which these images were taken is housed in the Montezuma Public Library, Montezuma, IN. Images were scanned by Mike Lewman (mblewman@yahoo.com), October 2007.



This annual is dedicated to John Bland  
as a token of the esteem and appreciation of  
the Class of 1948.

## ADMINISTRATION



**JAMES BURGETT**  
Trustee

Ass't Principal  
I. S. T. C.  
B. S.  
Coach  
Commerce



**LLOYD BINGHAM**  
DePauw University  
Indiana State Teachers  
College  
B. S. 1940; M. S. 1945  
Principal

**JOHN BLAND,**  
Ass't Principal



**MARIE JEFFERS**  
Indiana State Teache. .  
College  
B. S.  
Home Economics



**CARL BINGHAM**  
DePauw University  
Indiana State Teachers  
College  
B. S. 1940  
English



**ANNA PAGLIERO**  
Indiana State Teachers  
College  
B. A.  
Commercial Arts



**EARL BEAMAN**  
Indiana State Teachers  
College  
B. S. 1945.  
Music



**JOE HOOPENGARTNER**  
Wabash College  
Indiana State Teachers  
College  
B. A. 1940  
History



**JOHN HILL**  
Indiana State Teachers  
College  
B. S.  
Science



**GRADE FACULTY**

Russell, McDowell, Merry, Ayres, Berrisford, Athern.

JACK HARVEY  
(MOE)

Athletics 1-4  
Boys Police Force  
Student Court 1-4  
Student Council 4  
Office Force 3



WILLIAM FREDRICK  
MARSHALL  
(FRITZE)

Athletics 1-4  
Student Council 4  
Boys Police Force 1-4  
Dramatics 4



MILDRED LOUISE  
ALEXANDER  
(MILLIE)

Chorus 1-3-4  
Student Council 4  
Citizenship Club 3  
Office Force 3-4  
Debate 4  
Dramatics 3-4



LOIS EILEEN SMITH  
(RUSTY)

Lois came to M. H. S.  
as a Junior from  
Jeffersonville, Indiana.  
Chorus 3-4  
Athletics 3  
Student Council 4  
Statistics 4  
Office Force 3  
Dramatics 3-4  
Debate 4



ROBERT CHARLES  
HEEL  
(BOB)

Chorus 3  
Band 1  
Boys Police Force 1  
Student Council 1-2  
Dramatics 3-4  
Athletics 1-4



MARGARET DELL  
CUMMINS  
(MARGIE)

Dramatics 2-3-4  
Athletics 1-4  
Chorus 1-3-4  
Student Council 1-4  
Student Court 1-4  
Girls Police Force 3-4  
Debate 4  
Statistics 3-4



MARILYN BELLE  
PETERSON

Chorus 1-3-4  
Police Force 3-4  
Student Council 1  
Library 3  
Office Force 3  
Dramatics 4



PATRICIA ROHR  
(PAT)

ARTHUR MORRIS  
(ART)

Boys Police Force  
1-2-4  
Athletics 1-2



BETTY LOU KELLER  
Chorus 1-3-4  
Girls Police Force 3-4  
Dramatics 3-4

WILLIAM PERRY  
FEATHERSTON  
(BILL)

Athletics 1-4  
Student Council 4  
Boys Police Force 3-4

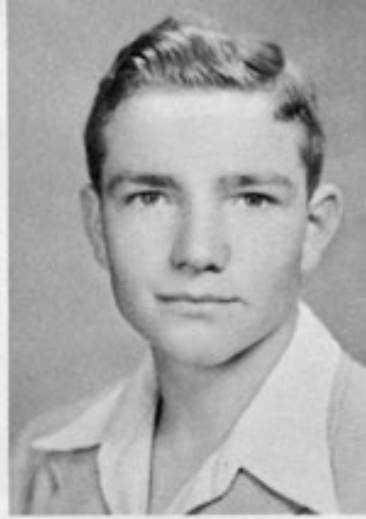


BARBARA LOU CULP  
(BARBIE)

Dramatics 3-4  
Athletics 1-4  
Library 1-2-4  
Chorus 1-3-4  
Debate 4  
Student Council 1  
Police Force 3-4  
Citizenship 1-2

DOROTHY ANN  
WILBURN  
(DOT)

Dramatics 2-3-4  
Chorus 1-3-4  
Girls Police Force 3-4  
Student Council 2-3-4  
Statistics 4  
Library 2-3  
Office Force 1



GEORGE SAMUEL  
GARRARD (SAM)

Athletics 2-3-4  
Student Council 3  
Chorus 3  
Band 1  
Dramatics 3-4

BARBARALEA WILDERMAN

Barbara came to M. H. S.  
as a Senior from Mulberry  
Grove. Her Posters have  
been greatly appreciated.



CHARLES CORY  
(TRAPPER)

Athletics 1-2-3  
Assistant Student  
Manager of Boys  
Athletics 4.

LOU ANN MONTGOMERY  
(LULIE)

Library Staff 1-2  
Office Force 2  
Student Council 1-2  
Chorus 1-2-3  
Dramatics 3  
Statistics 2  
Citizenship Club 1-2-3



CHARLES SMITH  
(DUNK)

Student Manager of  
Boy's Athletics 1-4  
Boys Police Force  
2-3-4  
Student Council 4