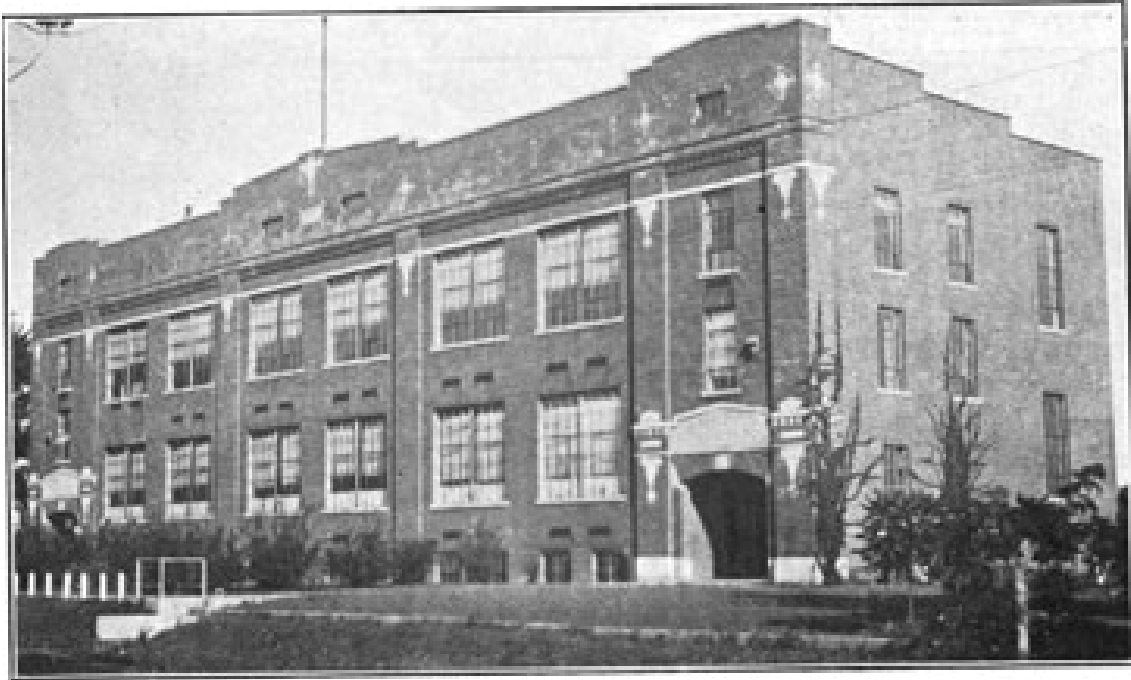


1930 Montezuma School Annual *Part 1*



Note: This annual, donated by Fauniel Ephlin Russell, is housed in the Montezuma Public Library, Montezuma, IN. Images were scanned by Mike Lewman, September 2007.

The Aztecs
of
1930



Published by
The Editorial Staff
and the
Senior Class
of
Montezuma High School

Montezuma, Indiana

Foreward

Montezuma High School is known for its spirit of progress and its "Ever Forward" motto. In the pages which follow the Editorial Staff and the Senior Class of 1930 have presented this Aztec to you in the hope that they have caught and reflected on to you some of the spirit and progressiveness of dear old M. H. S.



STAFF OF MONTE'S TATTLER AND AZTEC

Dedication

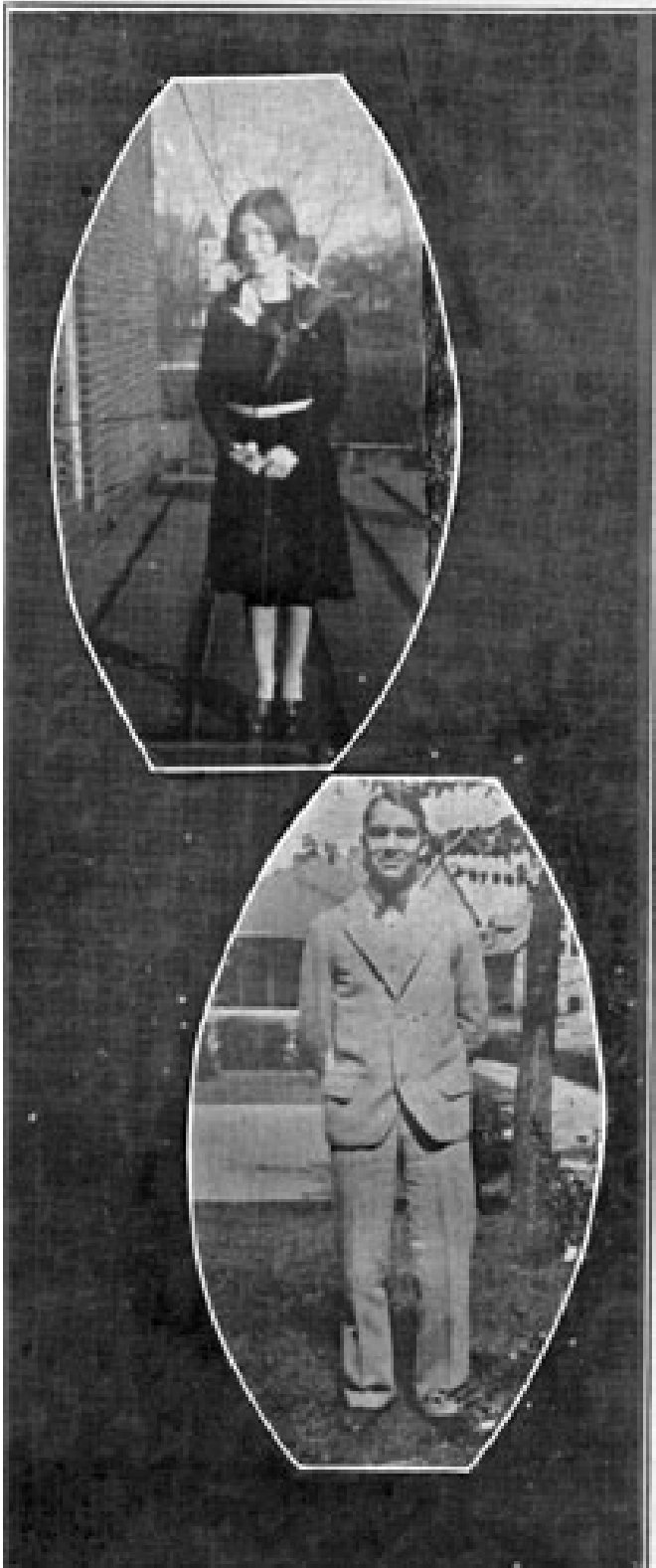
We dedicate this annual jointly to Miss Manwaring and Mrs. Clary, who have ever shown us an inspiring motherly devotion in all our trials and tribulations, as well as in our successess.

In Memoriam

ANNA LIGHTLE HODGE

Anna Lightle Hodge was born at Marshall, Indiana, February 11, 1909. She attended school at Montezuma and graduated with the class of 1926 with high scholastic honors.

She died at the Union hospital at Terre Haute on May 17, 1929 and was buried in Oakland cemetery at Montezuma.



CONRAD HANN

Conrad Hann was born at Montezuma, August 18, 1910. He graduated with the class of 1928. He played on the baseball, basketball and track teams.

He died in an automobile accident November 10, 1929 and was buried in Oakland cemetery at Montezuma.





Faculty Meeting



Our Grade Faculty Ready for Any Occasion

Miss Keller in a corrective mood.
 Mrs. Clark deep in study.
 Miss Ayers looking them over.
 Miss Ephlin expressing approval.
 Mr. Montgomery as Musical Sam of Broadway.
 Miss Myers welcoming a visitor.

This has been a very successful year for the grade school of Montezuma. The enrollment has been heavy but the work has been exceptionally good. It truly is with regret on the part of the pupils to see the school year come to a close. The grade children have enjoyed a busy and happy year.

The Reserve Township Faculty threw a party at Sunbeam Corner February 17 and made merry with the school officials and high school faculty. A grand time was enjoyed. Mr. Reel was presented with a beautiful Masonic ring by the faculty of Reserve Township in appreciation of his administration. Miss Mathas and Miss Brown bear the torch of education at West Union. They are a part of our grade faculty also.



Seniors

Alden Southworth, 'Doc.'
President First Semester,
Mechanical shark.

Mayme Jackson, 'Ploozy'
President Second Semester,
Star athlete.

The class of 1930 is the largest class of Seniors that was ever graduated from dear old M. H. S., so we feel that we have tried to make our school the best and set a good example for underclassmen. Our school career has been a great experiment in democracy. We have learned much. Now it is up to us to put what we have learned into use. We trust that in our struggles in the world that we may meet with success and that we will do our best to make our school proud of us.

We hate to leave, yet ever the old must make way for the new. But ever and anon will our memories float back to our happy school days. Row on.

Senior Pictures

Perry Smith,

"Buck"

Basket ball, '27, '28, '29

Baseball, '27, '28, '29

Track, '27, '28, '29.



Hiram McBride,

"Stash"

Police force, '28, '29, '30

"Mammy's Lil' Wild Rose," '29

"The Road Back," '30
Azets, '29, '30.



Kathryn Mae Knapp,

"Jackie"

Office force, '30

Orchestra, '27, '28, '29

Pirates Daughter, '29

Isle of Chance, '27

"Mammy's Lil' Wild Rose", '29

"Cranberry Corners, '30



Ethel Mae Cooy

"Peggy"

"Mammy's Lil' Wild Rose" '29

Office force '27, '28, '30

Police force '30

Glee Club '28 '29, '30

"Pirate's Daughters," '29

"Cranberry Corners," '30.



Frieda Madeline Joslin

"Skeesix"

Office force, '29

Glee Club, '29 '30

"Cranberry Corners," '30.



Senior Pictures

Doris R. Nickle

"Dot"

Pres. Student Council,
'30

Sec. of Editorial Staff,
'30

Chief of Office force,
'29, '30

"Mammy's Lil' Wild
Rose," '29

"The Pirates Daughter,
'29

Orchestra, '29, '30

Police force '27, '28

Judge's court '30

Glee Club, '27, '30.

Fern Marie Joslin

"Beats"

Sec. Student Council,
'29

Office Force, '29, '30

"Mammy's Lil' Wild
Rose," '29

Glee Club '27, '30

Ambrose Jared

"Archie"

Athletic sales force,
'28, '29.

Axtec sales force, '29,
'30.

Ovid Marlowe

"Ovie"

Baseball, '27, '28, '29,
'30

Basket ball, '27, '28 '29
'30

Police force '27 '28

"Cranberry Corners,"
'30

Track, '29, '30.

Jo'n B. Routien.

"Professor"

Police force '28, '29, '30
Student Council, '27,
'29 '30

Junior Play, '29

"Isle of Chance" '27

Honor student, '27, '28,
'29

Judge's Court, '30

Cranberry Corners '30

Business Mgr of Ax-
tec, '30.

Senior Pictures

Elizabeth Durham

"Lizzy"
Glee Club, '27
Basket ball, '27, '28, '29
Girls Student Mgr., '30
Track, '27, '28, '29, '30.

Vera Vermillion,

"Peaches"
Basket ball, '27, '28, '29
'30
Glee Club, '26, '27, '30
Orchestra, '27 '28, '29
'The Pirates Daughter'
'29
Office force, '27, '28.

Julie Gosnell,

"Judie"
Office force, '30
'Pirate's Daughter,' '29
Glee Club '27 '28, '29,
'30
'Mammy's LIP Wild
Rose,' '29
'Isle of Chance' '27
Minstrel, '28
All County Chorus, '29
'Legend of Sleepy Hol-
low,' '29.

Paul Lightle,

"Beannie"
'Isle of Chance' '27
'The Pirates Daughter,' '29
'Mammy's LIP Wild
Rose,' '29
'Cranberry Corners'
'30
Pres. of Soph. class.
'27
Police force, '28 '29, '30
Track '28 '30
Student Council, '29 '30
Baseball '28 '29
Basket ball '28 '29 '30
'The Road Back' '30.

Wilfred L. Garrard

"Chubby"
Baseball '28 '29
Basket ball '29 '30
Student Council '28 '30
Police force '28 '29 '30
Office force '28 '29
Student Mgr. '29 '30



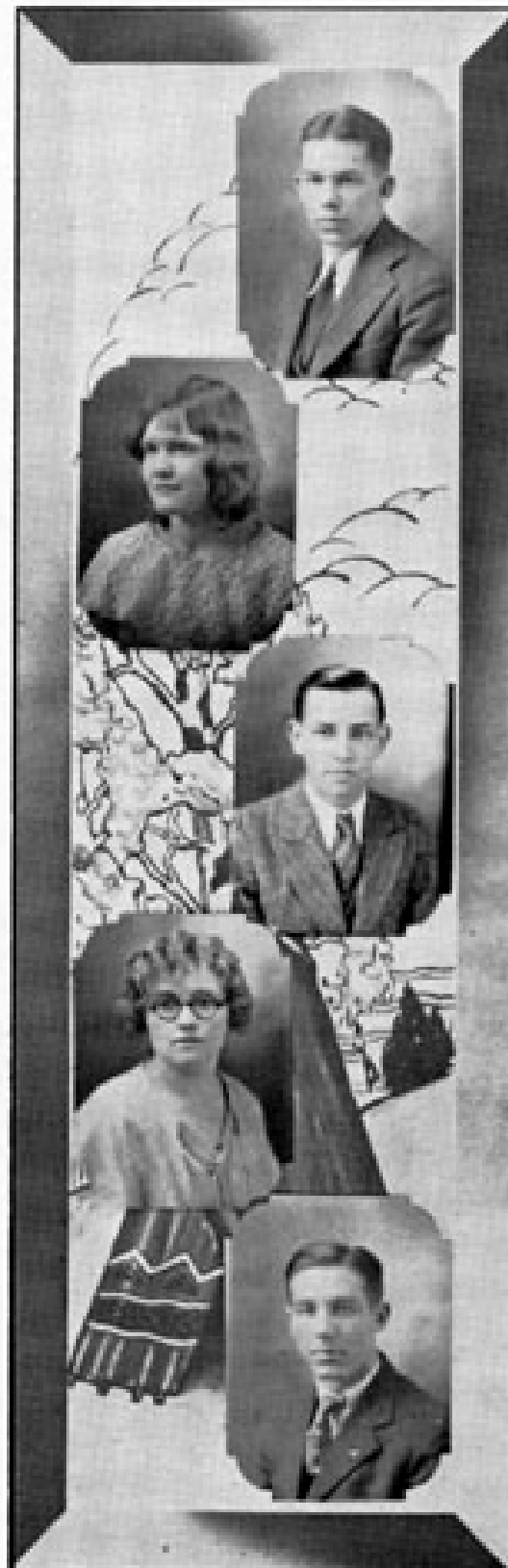
Senior Pictures

Eva Singleton,

"Little Eva"
Office force, '30
Glee Club, '27, '28
"Isle of Chance" '27.

Madge Ingram,

"Mig"
First prize Pie baking
contest, '27.



Russell Harper,

"Steve"
Police force, '29, '30
Basket ball, '28, '29, '30
Track, '27, '28, '29, '30
"Cranberry Corners,"
'30.

Eugene Schrader,

"Gene"
Oratorical contest, '28
Office force, '28
Student Council, '27
Glee Club, '28, '29, '30
Police force, '29, '30
"Pirate's Daughter,"
'29
Basket ball, '30
"Cranberry Corners,"
'30.

William Jackson,

"Pee"
Police force, '27 '28 '30
Capt on basket ball,
'28 '29
Baseball, '26 '27, '28
Student Council, '30.



The Junior Class



The Sophomores



The Ninth Grade



The Eighth Grade



The Seventh Grade