

TOWNS in MONTGOMERY COUNTY Indiana



From Then ... to Now ...
By Karen Bazzani Zach

With super special thanks to: Suzie Zach Baldwin;
Jerry Turner; Bill Boone; Ron Keedy; Dellie Craig;
The Rushes; & the Crawfordsville District Public
Library's workers plus their image database .. And
anyone I left out 😊

“MY KIND OF TOWN”

- Take a guess at how many “towns” (places, railroad stops...) there has been in Montgomery County throughout its history!



ANSWER 😊

And.... the answer is ...
(as of 6-10-2017)

.....

Genealogy Club
of Montgomery County, IN Corp

“My Kind of Town”

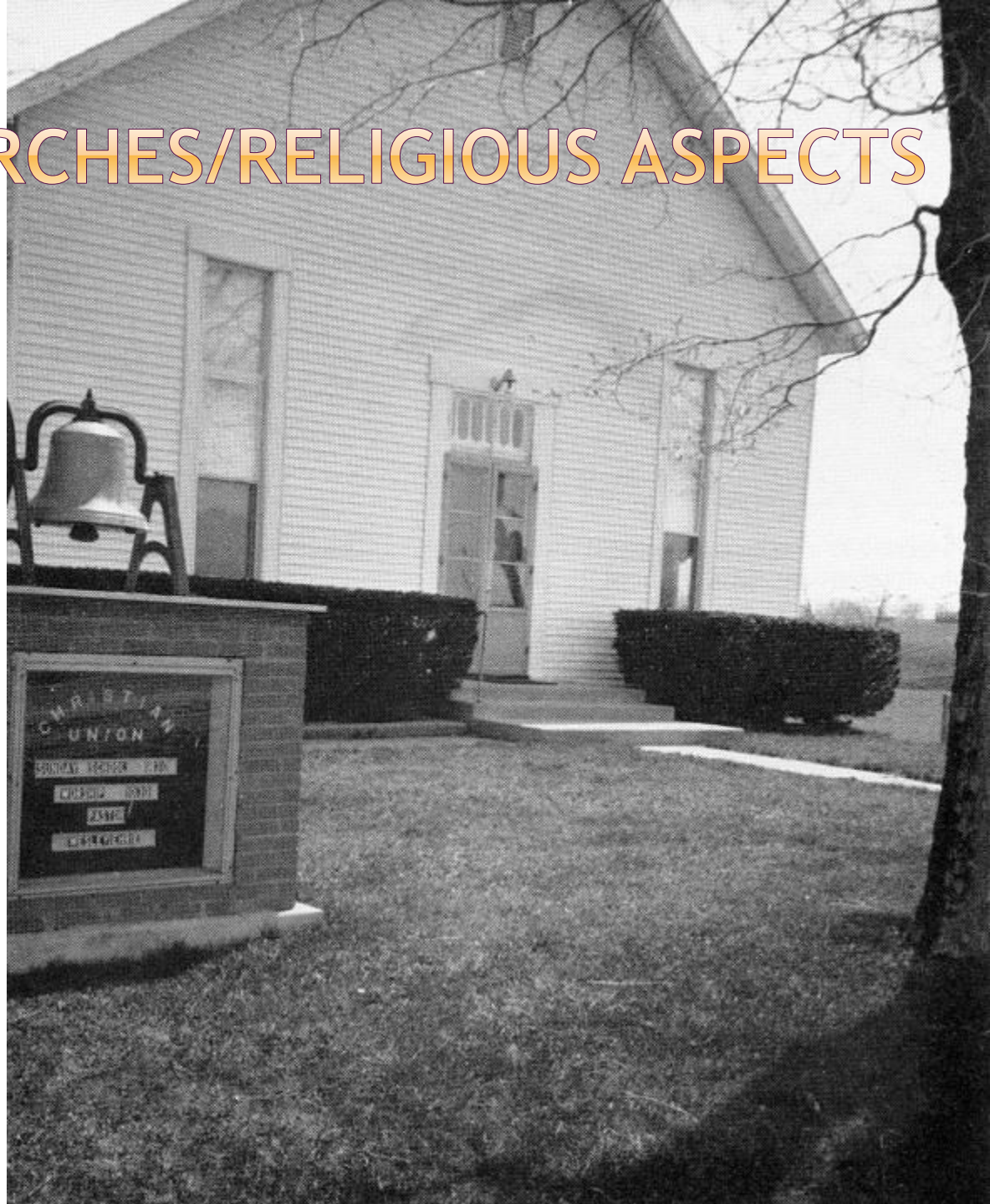
7:00 pm -- Tuesday 13 June 2017



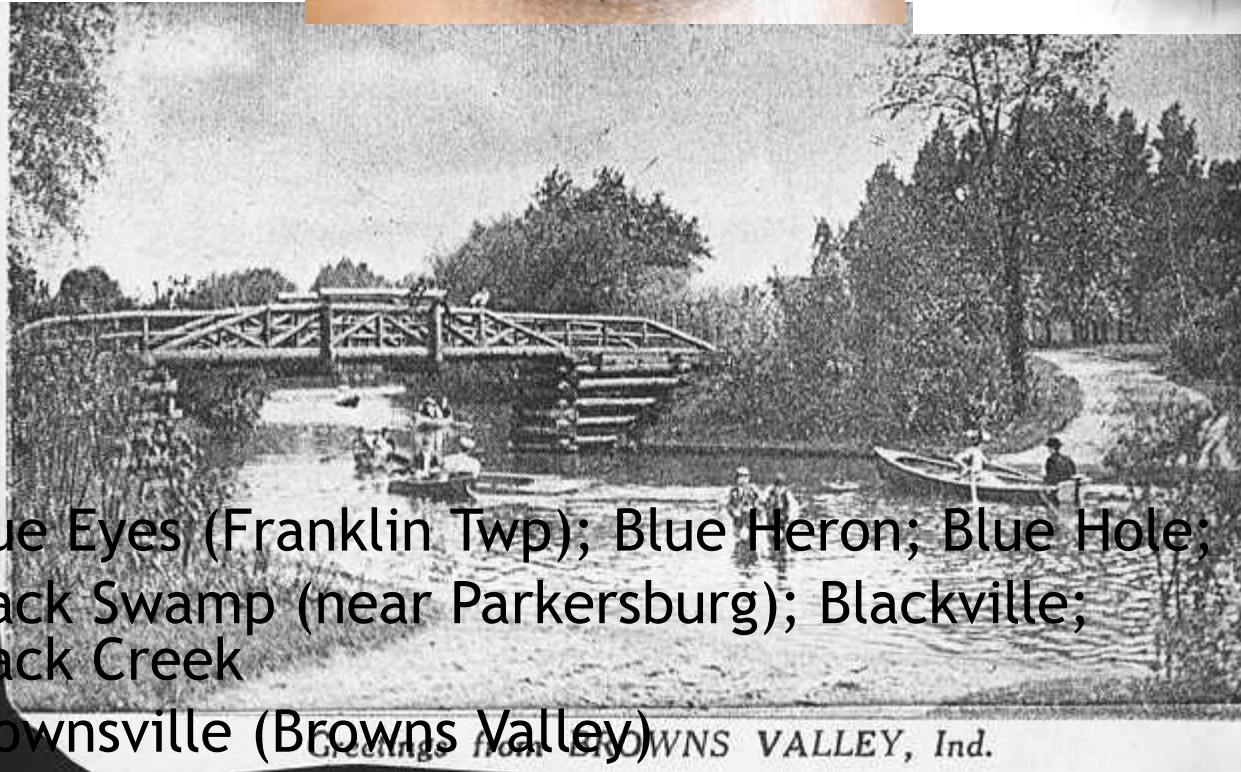
Speaker: Karen Zach, Montgomery and Fountain Co, IN GenWeb
Genealogist, past County Historian, and author.

NAMED FOR CHURCHES/RELIGIOUS ASPECTS

- ◉ Christian Union
- ◉ Faithville
- ◉ Heaven's Garden
- ◉ Preacher's Rock
- ◉ Kingsley Chapel
- ◉ Liberty Chapel
- ◉ Salem Chapel
- ◉ Union Chapel
- ◉ Walnut Chapel
- ◉ Youngs Chapel



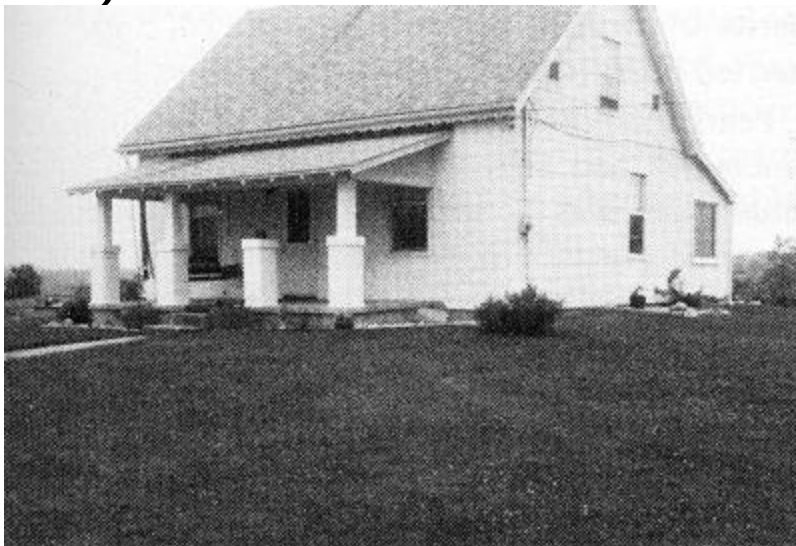
EVEN MORE 😊
COLORS



- ⦿ Blue Eyes (Franklin Twp); Blue Heron; Blue Hole;
- ⦿ Black Swamp (near Parkersburg); Blackville; Black Creek
- ⦿ Brownsville (Browns Valley)
- ⦿ White Church (1/2 way between Colfax & Linden); Whitesville; White Church...

CORNERS HERE --- CORNERS THERE (AND THESE ARE ONLY A FEW)

- ⦿ All with the name Corner behind it
- ⦿ Cowan; Fruits; Council; Hickory; Hyten; Ingersoll; Kimler; McBee; McCabe; McCrea; McDowell; Oswalt; Pickett; Utterback



OH, OH,
ANOTHER
QUESTION FOR
YA' & NOPE, NO
ANSWER YET 😊

Question #2 -

Where was the Wm.
Bundy Hardware??
(what town and I'll
give ya' a hint - on the
East side of the
county).



LAY OF LAND

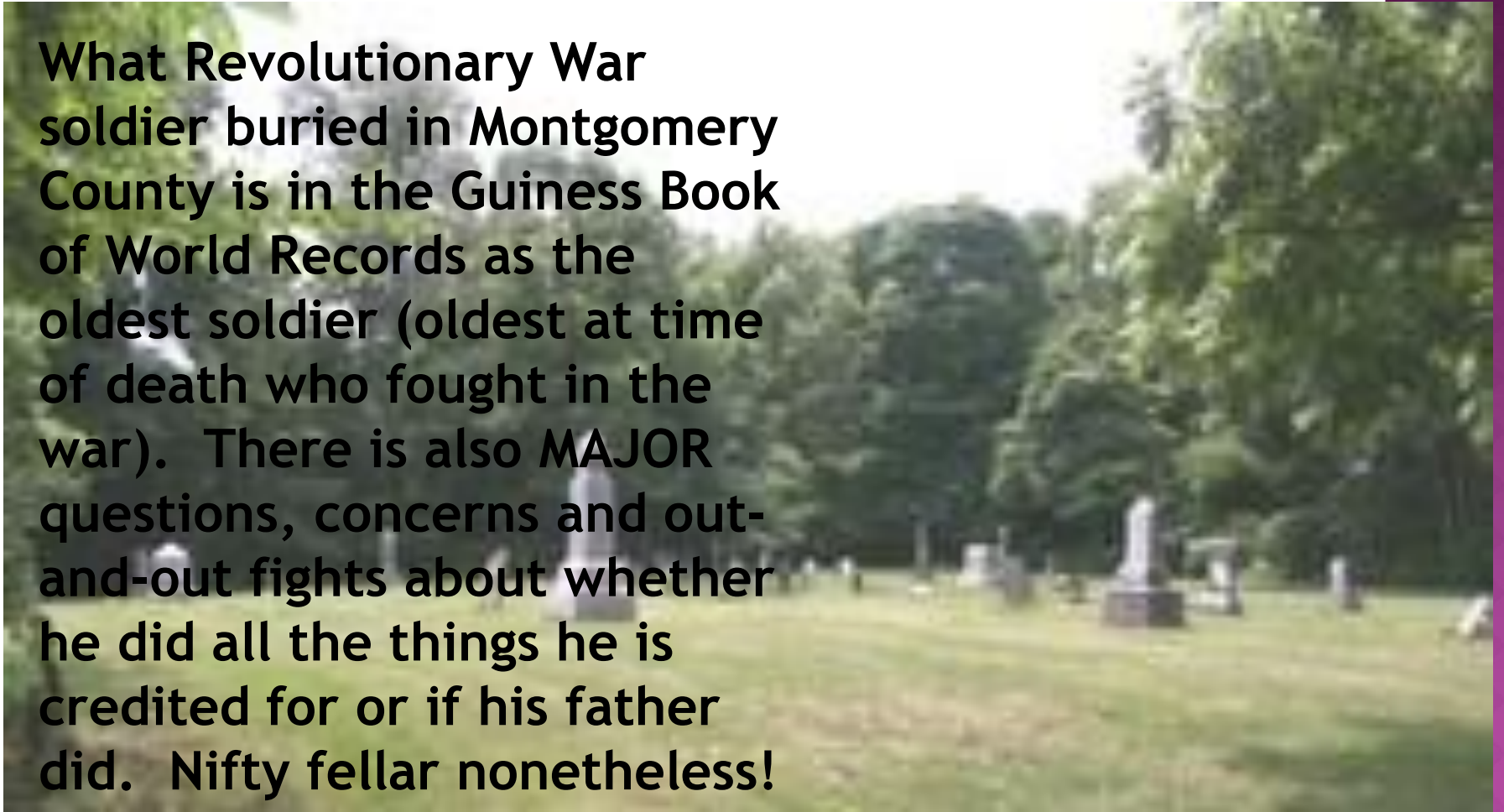
- ★ Bunker Hill....
- ★ Clore's Grove
- ★ Flowing Springs
- ★ High Bluff
- ★ High Point
- ★ Leiter's Ford
- ★ Boulder Valley
- ★ Prairie Edge



- Bunker Hill Cemetery where the small town of Bunker Hill was - it is East of Alamo - BTW - Revolutionary War soldier, Sebastian Stonebraker is buried here -
- Pvt March 14, 1776 roll Capt. Diebler's Co 4th Batt Lancaster Co PA -- buried Stonebraker (Bunker) Cemetery, 2 Mi. E. of Alamo
- discharged 9 March 1777

QUESTION #3

What Revolutionary War soldier buried in Montgomery County is in the Guinness Book of World Records as the oldest soldier (oldest at time of death who fought in the war). There is also MAJOR questions, concerns and out-and-out fights about whether he did all the things he is credited for or if his father did. Nifty fellar nonetheless!



STATES, ETC.

- California
- Idaho
- Ireland
- Kentuck
- Oklahoma
- Shiloh
- Texas
- Sodom (no Gomorrha)



“WE ARE FAMILY”

Montgomery County is full of towns named for local people. Some were mentioned before - Clores , Bunnells..... (50ish)

Here are more:

- Bowers
- Coxville
- Dunlap
- Durham
- Fredericksburg
- Garland
- Grimes
- Linnsburg
- Parkersburg
- Peterson Country
- Sperryville
- Yountsville

• Sharon Ross Bell; Bonnie Ross Alfrey; Bob Ross; Esther Ross - thanks to Teddy Alfrey for this great picture

◉ Question #4 ---

NAME ANOTHER “Family” Town☺ --
SCRATCH THAT - too many of
‘em -- #4 == What is unique
about New Market?

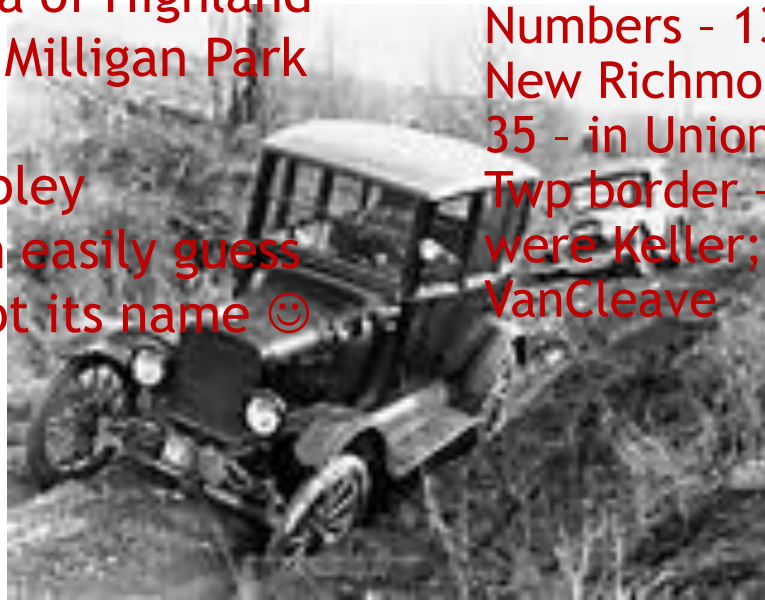


FUN ONES

*Merry Widow - an Interurban cross-road stop. This town was also called Akers - perhaps a Mrs. Akers was the Merry Widow?

*Milligan - NOPE, not the Milligan down by Waveland in Parke County but in our county - Section 5 Union Twp - may be what was the area of Highland - it is NOT where Milligan Park is today.

*Muddy Lane - Ripley Township, we can easily guess where this one got its name 😊



Musical Corner - several people have tried to chase this one down but finally we THINK it is in lower Clark Twp - names there were Rettinger; Howard; Lollis; Goble and Davidson - this was at the turn into the 1900s

Needmore - not sure what they need more of - families were Bruce, Payne, Perry, Spohr and Mounts and this was north of where Beckville is

Nine Mile Prairie in Coal Creek

Township - runs across the top of the county for 9 miles - County Road 1200 North - there are several Numbers - 13 - west and north of New Richmond late 1800s - Number 35 - in Union Twp near the Ripley Twp border - names in late 1800s were Keller; Lewellen and VanCleave

QUESTION #5-7

Here are names of towns that might/might not have been here - there are THREE NOT correct - guess which 3 !!

- PawPaw Bend
- Peyton's Corner
- Pine Breeze
- Polyopolis
- Prairie Edge
- Quaker Cave
- Reyk Javik
- Scatterville
- Weddlesville
- Wolf Hole



FOOD

- ◉ Buttermilk Town
- ◉ Cherry Grove
- ◉ Coffeeville (Coffeyville)
- ◉ PawPaw Bend
- ◉ Pumpkin Butter CrossRoads
- ◉ Potato Creek Station
- ◉ Trout



TREES

- ◉ Ash Grove
- ◉ Beech Grove
- ◉ Cypress
- ◉ Hickory Corner
- ◉ Lone Tree
- ◉ Magnolia Mills
- ◉ Maple Grove / Maple Hill
- ◉ Oak Grove
- ◉ Pine Bluff
- ◉ Sycamore Ford



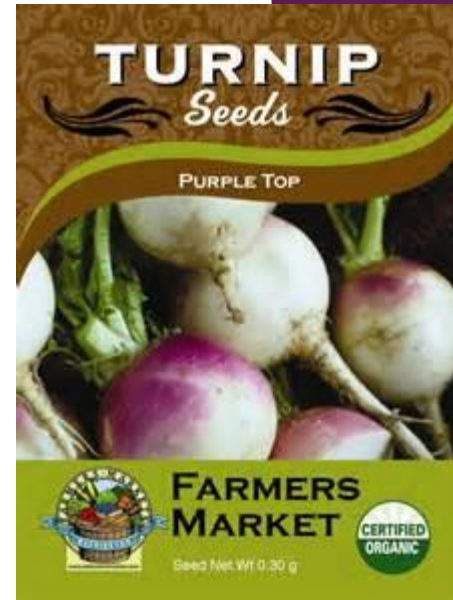
THOSE THAT MAKE YOU WONDER

- ◉ Beckoning Woods
- ◉ Buckhorn Tavern
- ◉ Environ
- ◉ Gallagher's Gas Well
- ◉ Ghostville
- ◉ Havana & Porto Rico
- ◉ Loverhill
- ◉ Midway Plaisance (our #300 by the way)
- ◉ Needmore & Needmore Corner
- ◉ Polyopolis
- ◉ Razzoopville (1887)
- ◉ Scatterville
- ◉ Shady Nook
- ◉ Stillhouse
- ◉ Tadmore
- ◉ Tattler's Corner
- ◉ Tile Siding
- ◉ Tramp City



DUPLICATES

- ◉ Martin's Crossroads (1 in CC; 1 in Walnut)
- ◉ Paddock Corner - Sugar Creek & Madison
- ◉ Turnipseed Corner - Madison & Sugar Creek
- ◉ Fairview (Brown; Union)



ANIMALS....

- ◉ Beaver's Station
- ◉ Blue Heron Rookery
- ◉ Buffalo Ridge
- ◉ Deer Ford
- ◉ Dogtown
- ◉ Duck Pond Corner
- ◉ Fish Pond Corner
- ◉ Frog Pond
- ◉ Hog Heaven
- ◉ Opposum Ridge
- ◉ Tiger's Valley



PLACES NOT FOR ME

- *Ash Pile
- *Bald Hill
- *Bed Bug Corner
- *Beeville
- *Boot Hill
- *Bossum Ridge
- *Dog Town
- *Friggy's Run
- *Frog Island
- *Ghostville
- *Hard Scrabble
- *Hog Heaven
- *Lone Tree
- *Mossy Dell
- *Wringneck



QUESTIONS 8 & 9

8 -- What town was named in an unusual way.

Choose the correct letter

- A = Antioch
- B = Boston Store
- C = Center Grove
- D = Deers Mill
- E = Elmdale
- F = Fairchild
- H = Hard Scrabble
- I = Iola
- J = Jack's Hollow
- K = Knowledge Point
- L = Liberty



#9 - What town is where the Horse Thief Detective group met?

Use the same letters for this answer as above 😊



FLOWERS & THINGS



- ◉ Flowery Realm
- ◉ Fiddler's Point
- ◉ Frosty Corner
- ◉ Locust Grove
- ◉ Magnolia Mills
- ◉ Maple Hill
- ◉ Pumpkin Ridge



INDIAN - ORIENTED TOWNS

▲ Cornstalk

▲ Dug Hill

▲ Kickapoo

▲ Pawnee

▲ Wigwam



○ Cornstalks

○ Miamis

○ Potawatomie

○ Kickapoo



QUESTION 10

How'd ya'
do??

#10 -- So, you have heard about many of the towns! Do you think you are close to the number of towns? Yes or No - by the way, you really can't get this one wrong - it's a given 😊 My school kids LOVED these type questions !!

How'd ya'
do???

How'd ya'
do???

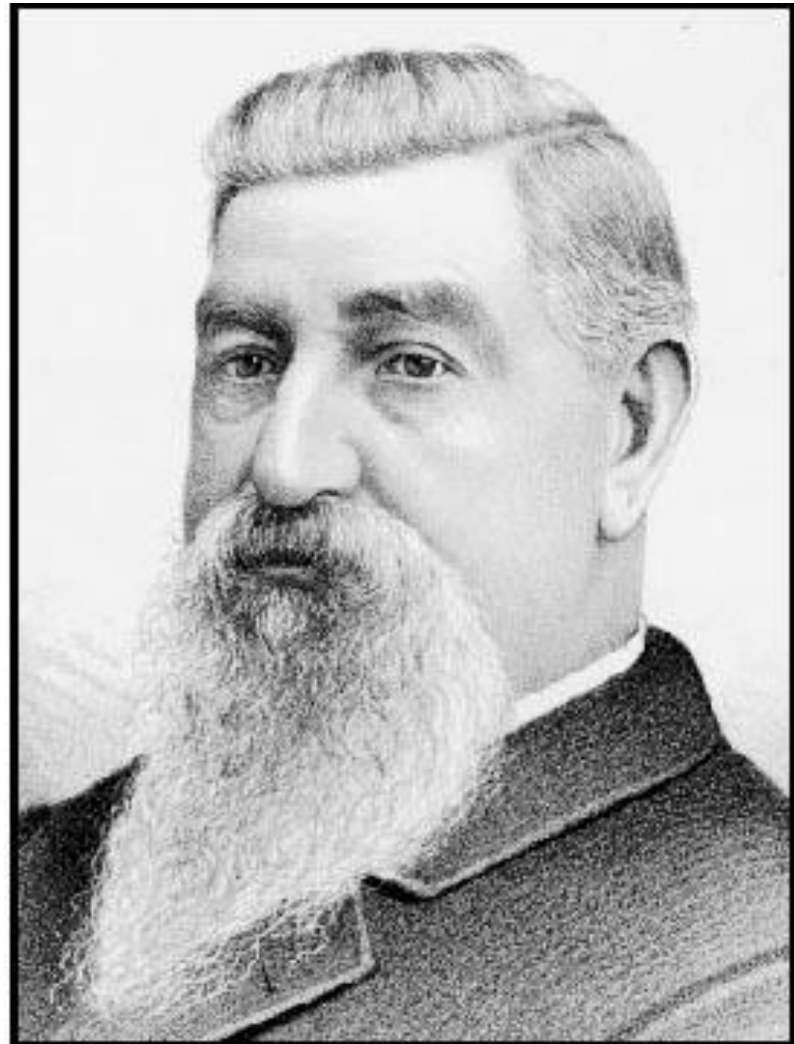
HOW'D
YA',
DO?

OKAY, HERE ARE THE ANSWERS

- ⦿ 1 - 454 - can ya' believe it? (Closest?)
- ⦿ 2 - Bowers (Bundy's store)
- ⦿ 3 - George Fruits (Rev War Soldier in Guinness)
- ⦿ 4 - New Market lies in 3 townships - Brown; Union; Scott
- ⦿ 5-6-7 - Peyton's Corner; Weddersville; Wolf Hole
- ⦿ 8-(B) Boston Store - Daniel Bennett (1832) brought a sign from Columbus, Indiana - Boston Store - travelers began to call it that (homes, blacksmith, churches ...)
- ⦿ 9 - (K) - Knowledge Point - last Sat - Sept, Dec, March, June - Fountain/Montgomery Co Group - also in Liberty Chapel and Meharry Grove
- ⦿ 10 - Y - N - your call !! (# Correct)
- ⦿ **PRIZE TIME** for the closest to #1 & for the most correct

FOR OUR FAMOUS 😊

- ⦿ Elmore Corner
- ⦿ Lane
- ⦿ Manson Hill
- ⦿ Offield
- ⦿ Whitlock



<http://www.ingenweb.org/inmontgomery/bios/m/manson-mahlon-dickerson.htm>

NAME CHANGES

- ⦿ Macedonia =
- ⦿ Ross =
- ⦿ Orth =
- ⦿ Somerset =
- ⦿ Middletown =
- ⦿ Clouser's Mill =

TOWNSMART... (THANKS
FOR LISTENING 😊)



- ◉ Few more interesting ones: **Airline; Fast Mail; Flag Stop; Goose Nibble; Heffnersville; Jamestown; Junction; Little Bill 1; Monon Flats; Pennington Lake**
- ◉ Hope you enjoyed - there are so many more (you now know the #, but don't blink, it may change next week!)
- ◉ ingenweb.org/inmontgomery/