

COUNTY, INDIANA, 189

Assessor's Plat-Book for

Township, No.

NAMES OF OWNERS.		Number on Plat.	DESCRIPTION.			Section.	Township.	Range.	Acres.	Hundredths.	Value of Lands.	Value of Improvements.	Value of Lands and Improvements.
						19	27	14					
Do	Crist Elias		SE	NW	"	"	"	40		840	150		
Do	" " " " " "		NE	NW	"	"	"	40		840		890	
Do	" " " " " "		W/2	NW	"	"	"	87		1900	340	840	
Do	Reynolds Wm B		W/2	NE	"	"	"	80		1760	180	2240	
Do	" " " " " "		NE	NE	"	"	"	40		880	570	1940	
												1450	
Do	Miller William		SE	NE	"	"	"	40		880		880	
	" " " " " "		NE	SE	"	"	"	40		880	799	1679	
	Crist Jacob		W/2	SW	"	"	"	93	50	1963	639	2598	
	Good Simon		W/2	E/2 SW	"	"	"	40		840	150	1030	
	Baltzell Thomas		SW	SE	"	"	"	40		840	200	1040	
Do	Andrews Gary		NW	SE	"	"	"	40		840	165	1005	
	" " " " " "		E/2 NE	SW	"	"	"	20		420		420	
	Andrews P. H.		SE	SE	"	"	"	40		840	470	1310	

SECTION NO. 19

Congressional Township No. 27, R. 14

Scale—Forty rods to an inch, or ten rods to a space, Congress Land, which is one mile square for a section.
Number of acres in this section, according to the United States Survey,



COUNTY, INDIANA, 189

Assessor's Plat-Book for

Township, No.

NAMES OF OWNERS.		Number on Plat.	DESCRIPTION.			Section.	Township.	Range.	Acres.	Hundredths.	Value of Lands.	Value of Improvements.	Value of Lands and Improvements.
	Andrews Deborah		N ^{1/2}	W ^{1/2}	SW	20	27	14	34	50	759	100	859
Do	Russell William		W ^{1/2}		NE	"	"	"	50		1760	270	2030
Do	" " " " " "		SW	NE	NE	"	"	"	10		220	—	220
Do	Simcoke Letitia		SW	E ^{1/2}	SW	"	"	"	30		660	—	660
Do	" " " " " "		W ^{1/2}	E ^{1/2}	SW	"	"	"	40		880	165	1045
	Baker Mary		SW	E ^{1/2}	E ^{1/2}	"	"	"	10		220	—	220
			SW	NE	NE	"	"	"	16		352	48	400
	Miller William		SW	W ^{1/2}	SW	"	"	"	45		990	135	1125
Do	Hess Peter		E ^{1/2}		NE	"	"	"	54		1188	250	1438
	" " " " " "		SW	W ^{1/2}	SW	"	"	"	54		1188	81	1269
Do	Andrews F. M.		SW		SW	"	"	"	40		840	200	1040
	" " " " " "		SW	SW	SW	"	"	"	20		420	—	420
	Andrews Jerry Jr		SE		SW	"	"	"	40		840	80	920
	Andrews P. H.		SW	W ^{1/2}	SW	"	"	"	20		420	60	480
Do	Eley David		NE		SW	"	"	"	40		840	95	915
	" " " " " "		SW		SE	"	"	"	80		1680	245	1925
	Mayer John		SW		SE	"	"	"	80		1680	165	1845

SECTION No. 20

Congressional Township No. 27, R. 14

Scale—Forty rods to an inch, or ten rods to a space, Congress Land, which is one mile square for a section.
Number of acres in this section, according to the United States Survey,



Andrews Deborah
34 acres

Simcock
Letitia
50 acres

Baker Mary
16 acres

Russell William
120 acres

Hess Fetter
54 acres

Miller William
50 acres

Andrews F. M.
60 acres

Eley David
120 acres

Meyer John
80 acres

Andrews George
40 acres

Andrews P. H.
20 acres

160
150
140
130
120
110
100
90
80
70
60
50
40
30
20
10
1
10
20
30
40
50
60
70
80
90
100
110
120
130
140
150
160

160
150
140
130
120
110
100
90
80
70
60
50
40
30
20
10
1
10
20
30
40
50
60
70
80
90
100
110
120
130
140
150
160

COUNTY, INDIANA, 189

Assessor's Plat-Book for

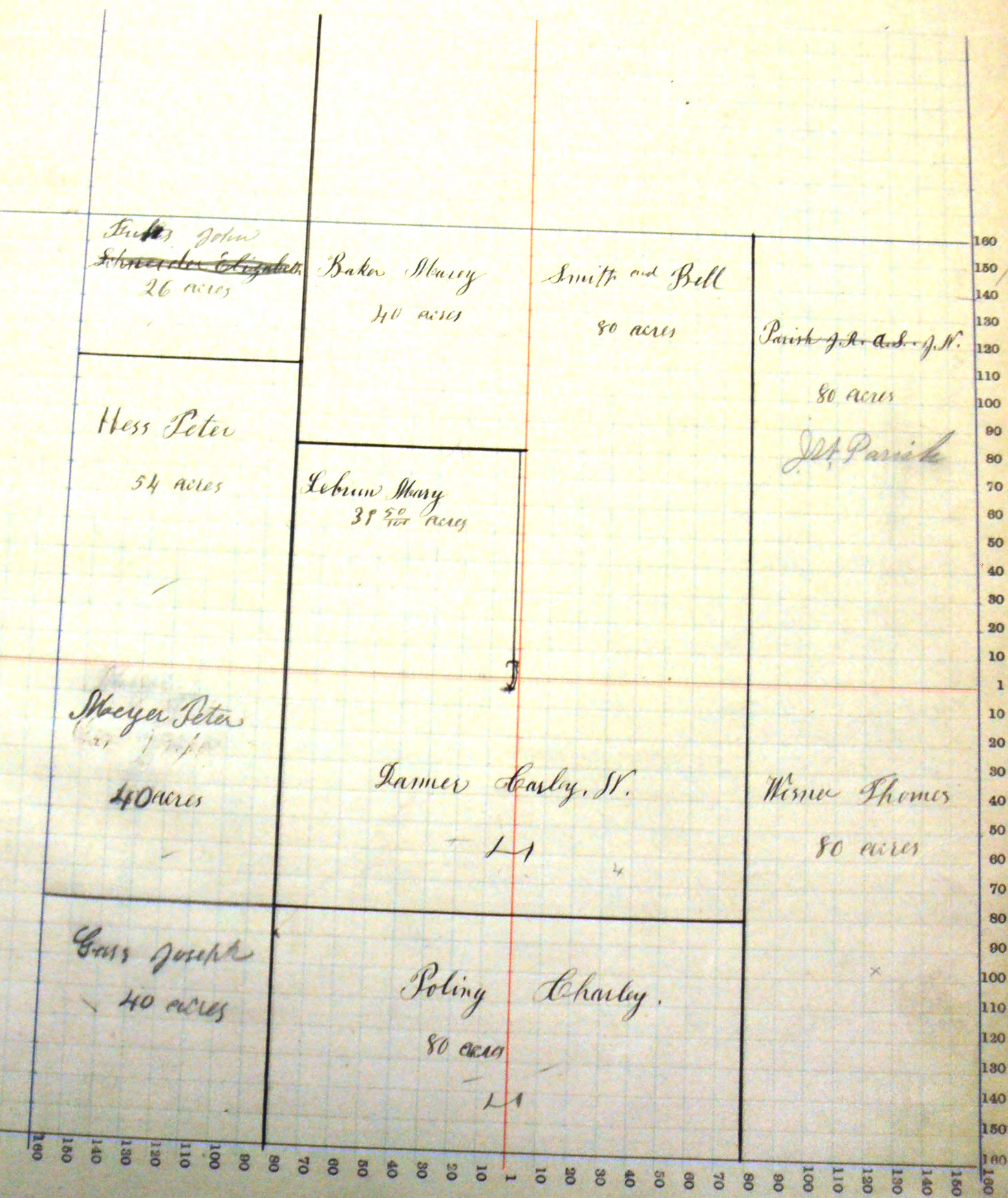
Township, No.

NAMES OF OWNERS.	Number on Plat.	DESCRIPTION.	Section.	Township.	Range.	Acres.	Hundredths.	Value of Lands.	Value of Improvements.	Value of Lands and Improvements.
Trub's John		for NW NW	21	27	14	26		572	103	675
Baker Mary	NE	NW				40		880	490	1370
Smith & Bell	1/2	NE				80		1760	105	1865
Parish, J. R. & J. M.	E/2	NE				80		1760	—	1760
Le Brun Mary	SE	NW				39	50	830	90	920
Mayer Peter	SW	SW				40		840	205	1045
Danner Charles L	for SE	NW				50		10	—	10
Winn Thomas	NE	SW				40		800	40	840
Poling Charley B	E/2	SE				40		80	—	80
Gass Joseph	SE	SW				80		1680	157	1837
Gass Joseph	SW	SE				40		840	100	940
Gass Joseph	SW	SE				40		840	—	840
Gass Joseph	SW	SW				40		840	550	1390

SECTION NO. 21

Congressional Township No. 21 R. 14

Scale—Forty rods to an inch, or ten rods to a space, Congress Land, which is one mile square for a section.
Number of acres in this section, according to the United States Survey.



COUNTY, INDIANA, 189

Assessor's Plat-Book for

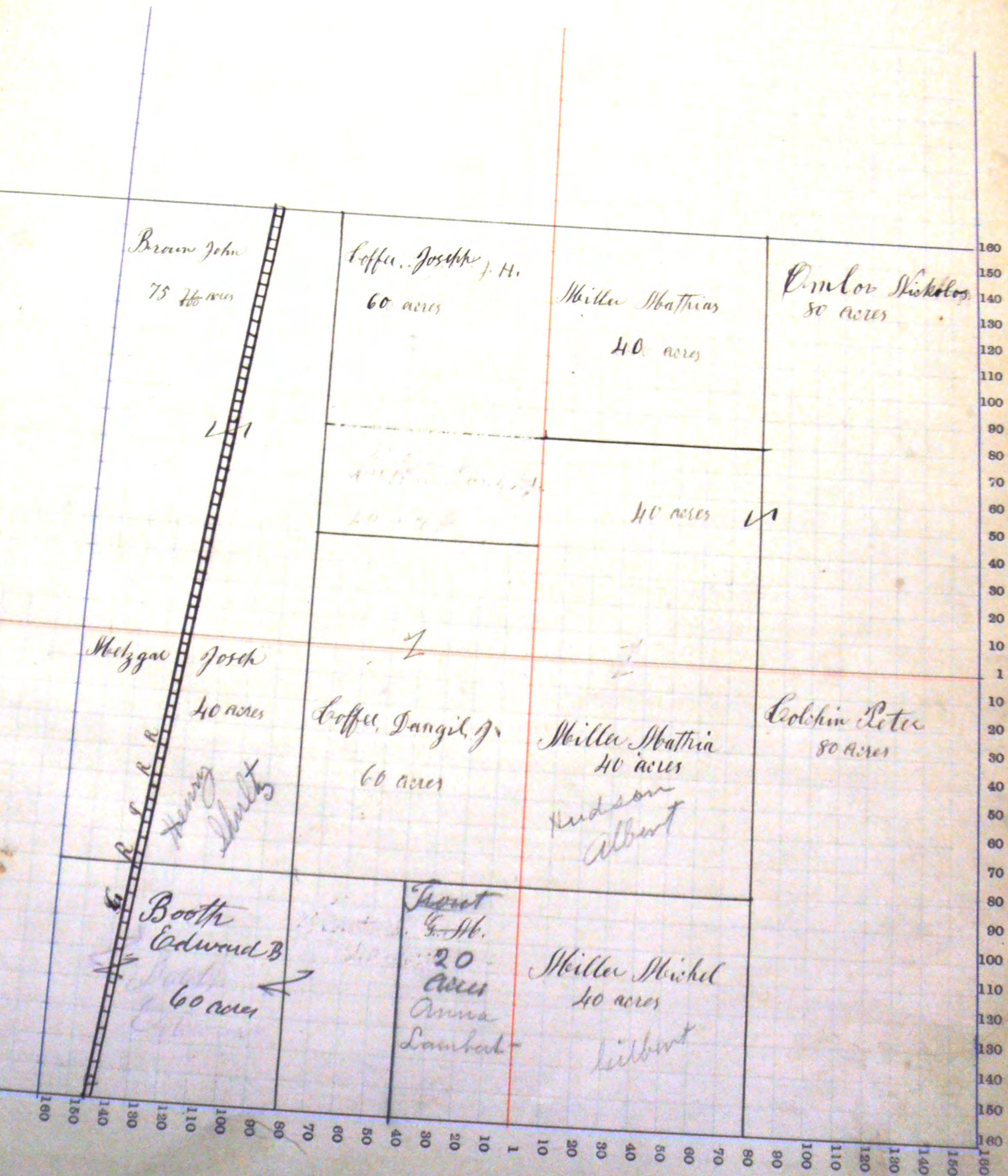
Township, No.

NAMES OF OWNERS.	Number on Plat.	DESCRIPTION.	Section.	Township.	Range.	Acres.	Hundredths.	Value of Lands.	Value of Improvements.	Value of Lands and Improvements.
Brown John		W/2 SW	22	29	14	75		1800	550	2350
do Coffee Joseph H.		NE NW	"	"	"	40		920	78	998
do " " " " " "		SE NW	"	"	"	20		460	—	460
do Omlor Niskoles		E/2 NE	"	"	"	80		1920	516	2436
do " " " " " "		W/2 NE	"	"	"	40		920	30	950
do Miller Mathias		SW NE	"	"	"	40		1000	130	1130
do " " " " " "		NW SE	"	"	"	40		880	45	925
do Metzger Joseph		SW SW	"	"	"	40		862	200	1062
do Miller Michel		SW SE	"	"	"	40		920	—	920
do Solchiv Peter		E/2 SE	"	"	"	80		1840	600	2440
do Coffee Daniel J		NE SW	"	"	"	40		920	—	920
do " " " " " "		SE NW	"	"	"	20		460	—	460
do Trout D. G. M.		E/2 SE SW	"	"	"	20		500	—	500
do Booth Edward B		SW SW	"	"	"	40		880	40	920
do " " " " " "		W/2 SE SW	"	"	"	20		440	—	440

SECTION NO. 22

Congressional Township No. 27 R. 14

Scale—Forty rods to an inch, or ten rods to a space, Congress Land, which is one mile square for a section.
 Number of acres in this section, according to the United States Survey.



COUNTY, INDIANA, 189

Assessor's Plat-Book for

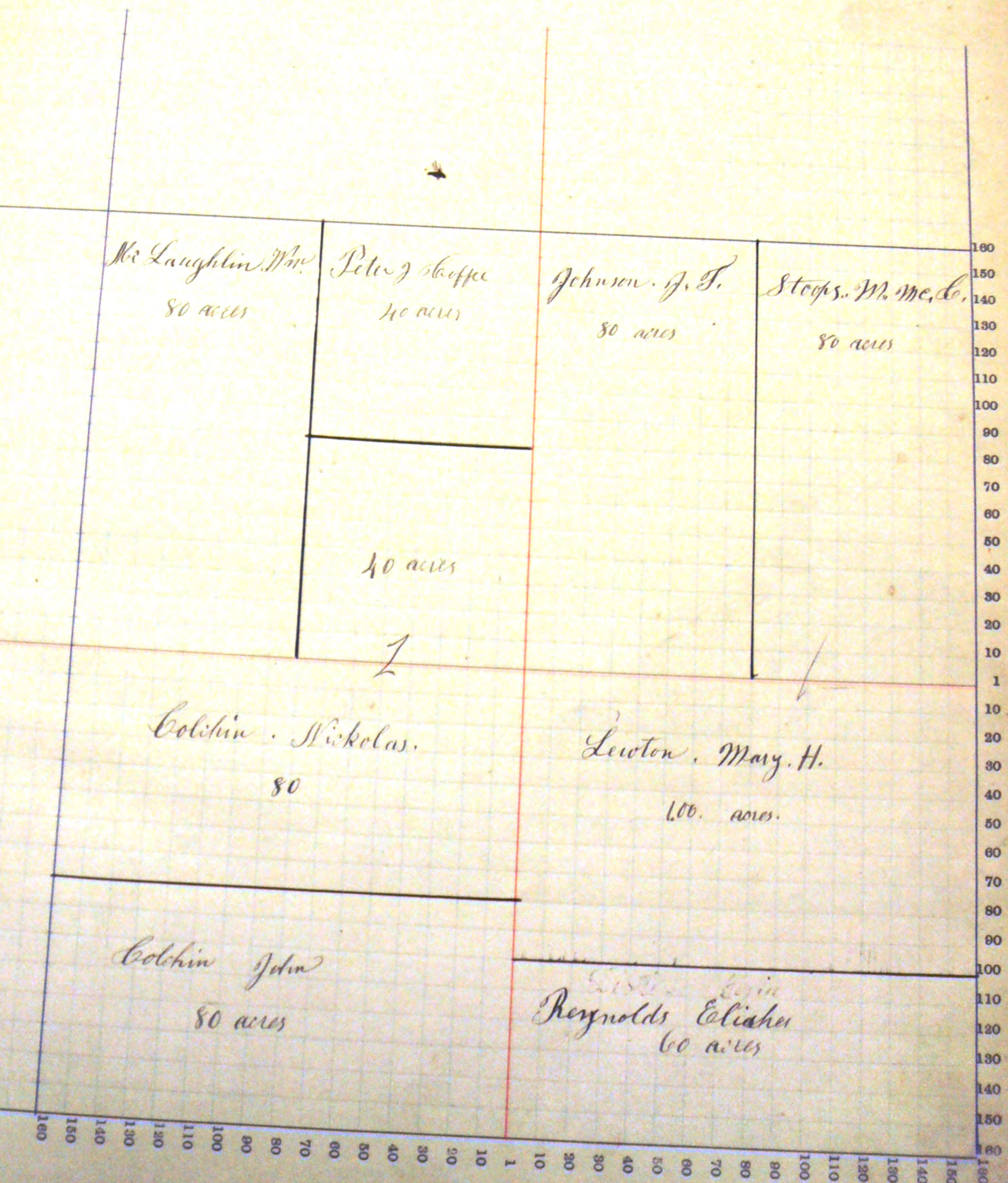
Township, No.

NAMES OF OWNERS.	Number on Plat.	DESCRIPTION.	Section.	Township.	Range.	Acres.	Hundredths.	Value of Lands.	Value of Improvements.	Value of Lands and Improvements.
Mc Laughlin Wm	W/2	SW	23	27	14	80		1920	200	2120
Coffee Peter J	NE	SW	"	"	"	40		960	—	960
Johnson J. T.	W/2	NE	"	"	"	80		1920	100	2020
Sloops M. M. C.	E/2	NE	"	"	"	80		2080	500	2580
do Lewton Mary	N/2	SE	"	"	"	80		2000	50	2050
do " " " "	N/4	SE	"	"	"	20		500	—	500
Colchin Nick	SE	SW	"	"	"	40		920	—	920
Colchin Nick	N/2	SW	"	"	"	80		1840	500	2340
Colchin John	S/2	SW	"	"	"	80		1840	350	2190
Reynolds Elisha	S/4	SE	"	"	"	60		1380	465	1845

SECTION NO. 23

Congressional Township No. 27, R. 14

Scale—Forty rods to an inch, or ten rods to a space, Congress Land, which is one mile square for a section.
Number of acres in this section, according to the United States Survey,



COUNTY, INDIANA, 189

Assessor's Plat-Book for

Township, No.

NAMES OF OWNERS.	Number on Plat.	DESCRIPTION.	Section.	Township.	Range.	Acres.	Hundredths.	Value of Lands.	Value of Improvements.	Value of Lands and Improvements.
Durkins John	W/2	NW	24	27	14	80		2000	255	2255
Cryer, D. M.	E/2	NW	"	"	"	80		2080	540	2620
	NW	NE	"	"	"	40		1040		1040
Faust James	NE	NE	"	"	"	40		1040	320	1360
Coverdale, L. N.	S/2	NE	"	"	"	80		2000	450	2450
France, W. H. H.	N/2	SW	"	"	"	80		2000	385	2385
Bender, Jacob, F.	N/2	SE	"	"	"	80		2000	440	2440
Long David Mathewson Husatic	S/2	SW	"	"	"	79	50	1987		1987
	N/2	SE	"	"	"	40		1000	64	1064
Howe Aidan	S/2	SE	"	"	"	40		1000	70	1070

SECTION NO. 24

Congressional Township No. 27, R. 14

Scale—Forty rods to an inch, or ten rods to a space, Congress Land, which is one mile square for a section.
Number of acres in this section, according to the United States Survey.

Dukin John
80 acres

Ayers, D. M.
120 acres

Fausts, James.
40 acres

Coverdale, G. N.
80. acres

Randey Jacob et al

France, W. H. H.
80 acres

Bender, Jacob, F.
80 acres

Long Dwight
74 5/8

Chamberlain

Mattinson Horatio
40 acres

Howe Adam
40 acres

Ch

160 150 140 130 120 110 100 90 80 70 60 50 40 30 20 10 1 10 20 30 40 50 60 70 80 90 100 110 120 130 140 150 160

COUNTY, INDIANA, 189

Assessor's Plat-Book for

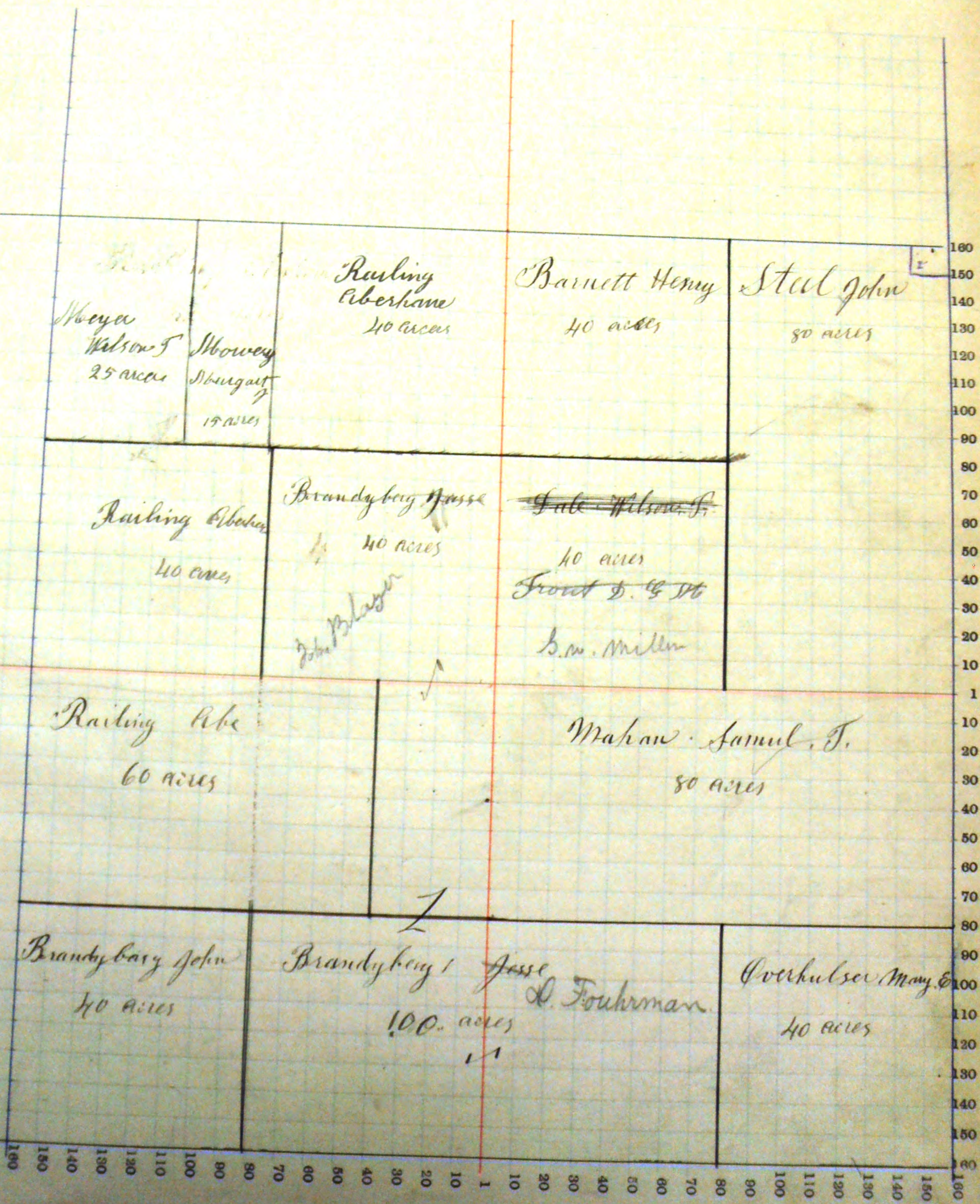
Township, No.

NAMES OF OWNERS.	Number on Plat.	DESCRIPTION.	Section.	Township.	Range.	Acres.	Hundredths.	Value of Lands.	Value of Improvements.	Value of Lands and Improvements.
Mayer Wilson T		for NW NW	25	27	14	25	550	50		
Mowrey Margaret		for NW NW	"	"	"	15	330	—	600	
									330	
Barneth Henry		NW NE	"	"	"	40	920	125	1045	
Steel John		E/2 NE	"	"	"	79	1817	583	2400	
Railing Abraham		E/2 N/2 NW	"	"	"	40	880	885	1765	
Do		SW NW	"	"	"	40	880	—	880	
Do		W/2 NE SW	"	"	"	20	440	—	440	
Do		NW SW	"	"	"	40	880	—	880	
Brandyberry Jesse		for E/2 SW	"	"	"	60	1320	700	2020	
Do		SE NW	"	"	"	40	880	—	880	
Do		SW SW	"	"	"	40	880	—	880	
Trout, D, G, H,		SW NE	"	"	"	40	880	—	880	
Abraham Samuel T		N/2 SE	"	"	"	80	1720	325	2045	
Brandyberry John		SW SW	"	"	"	40	960	300	1260	
Do		E/2 SE	"	"	"	80	1920	—	1920	
Overhulsa Mary E		SE SE	"	"	"	40	880	250	1170	

SECTION No. 25

Congressional Township No. 27, R. 14

Scale—Forty rods to an inch, or ten rods to a space, Congress Land, which is one mile square for a section.
 Number of acres in this section, according to the United States Survey,



COUNTY, INDIANA, 189

Assessor's Plat-Book for

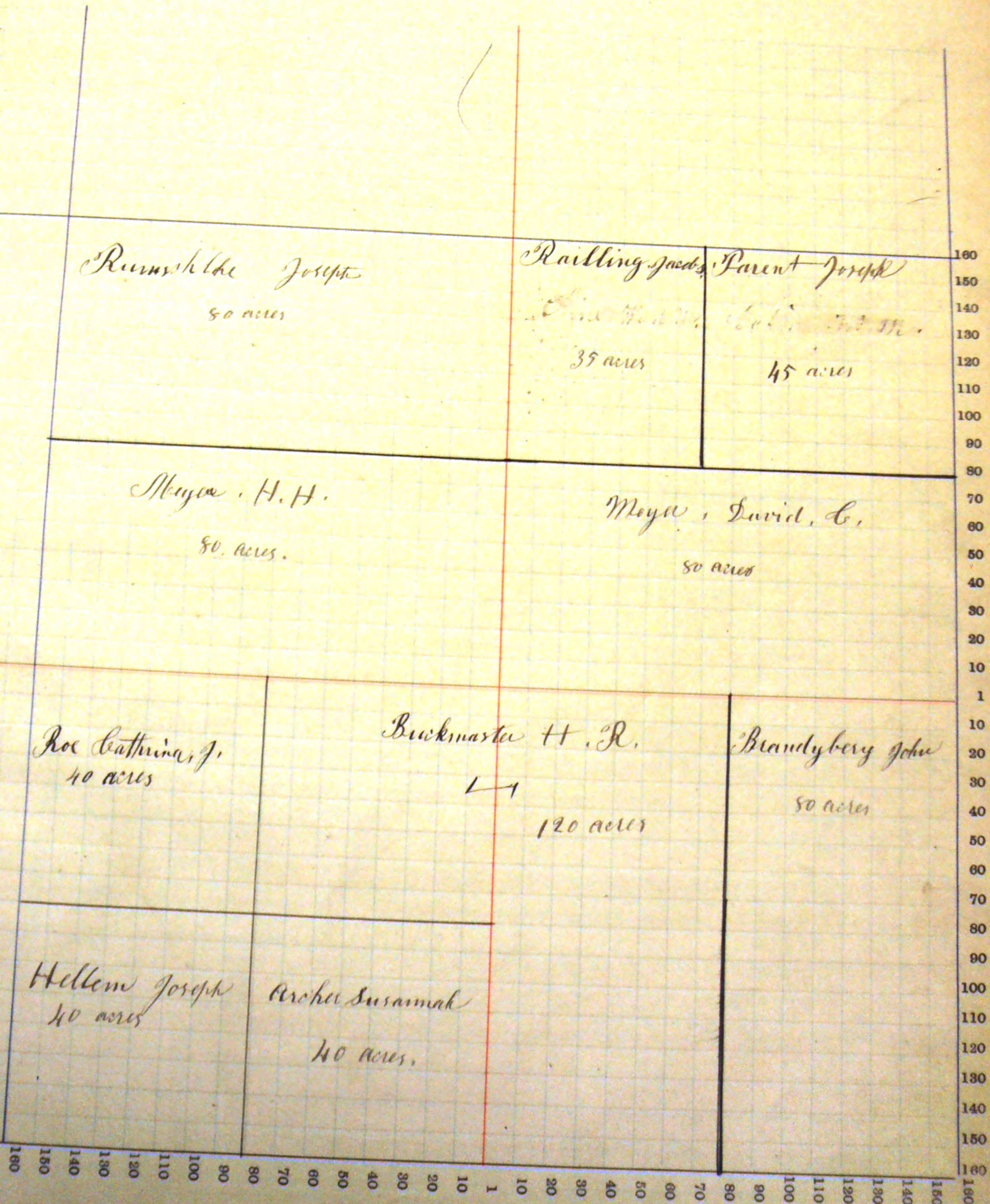
Township, No.

NAMES OF OWNERS.	Number on Plat.	DESCRIPTION.	Section.	Township.	Range.	Acres.	Hundredths.	Value of Lands.	Value of Improvements.	Value of Lands and Improvements.
Rumshlag Joseph		W/2 NW	26	27	14	80		1760	—	1760
Farent Joseph		E/4 NW	"	"	"	45		990	30	1020
Railing Jacob S		W/4 NW	"	"	"	35		770	45	815
Meyer David C		S/2 NE	"	"	"	80		1760	150	1910
Roe Cathrine J		SW SW	"	"	"	40		840	25	865
Buckmaster H. R.		W/2 SE	"	"	"	80		1760	420	2180
do " " " " "		W/2 SW	"	"	"	40		880	—	880
Hellen Joseph		SW SW	"	"	"	40		880	30	910
Cucher Susannah		SE SW	"	"	"	40		880	60	940

SECTION NO. 21

Congressional Township No. 27, R. 14

Scale—Forty rods to an inch, or ten rods to a space, Congress Land, which is one mile square for a section.
Number of acres in this section, according to the United States Survey,



COUNTY, INDIANA, 189

Assessor's Plat-Book for

Township, No.

NAMES OF OWNERS.	Number on Plat.	DESCRIPTION.	Section.	Township.	Range.	Acres.	Hundredths.	Value of Lands.	Value of Improvements.	Value of Lands and Improvements.
Nuttman Caroline		SE 1/4	27	27	14	160		3680		3680
Hartnet Margart		NW NW	"	"	"	40		880	—	880
Meibers John		NE NE	"	"	"	160		3700	—	3700
Ruskman, Pauline, Jr		SW	"	"	"	77	72	1710	200	1910
Houlthouse, John, B.		SW	"	"	"	155	46	3421	730	4150
Nuttman Carolina		SE	"	"	"	160		4000	—	4000

SECTION No. 27.

Congressional Township No. 27, R. 14

Scale—Forty rods to an inch, or ten rods to a space, Congress Land, which is one mile square for a section.
Number of acres in this section, according to the United States Survey.

