

COUNTY, INDIANA, 189

Assessor's Plat-Book for

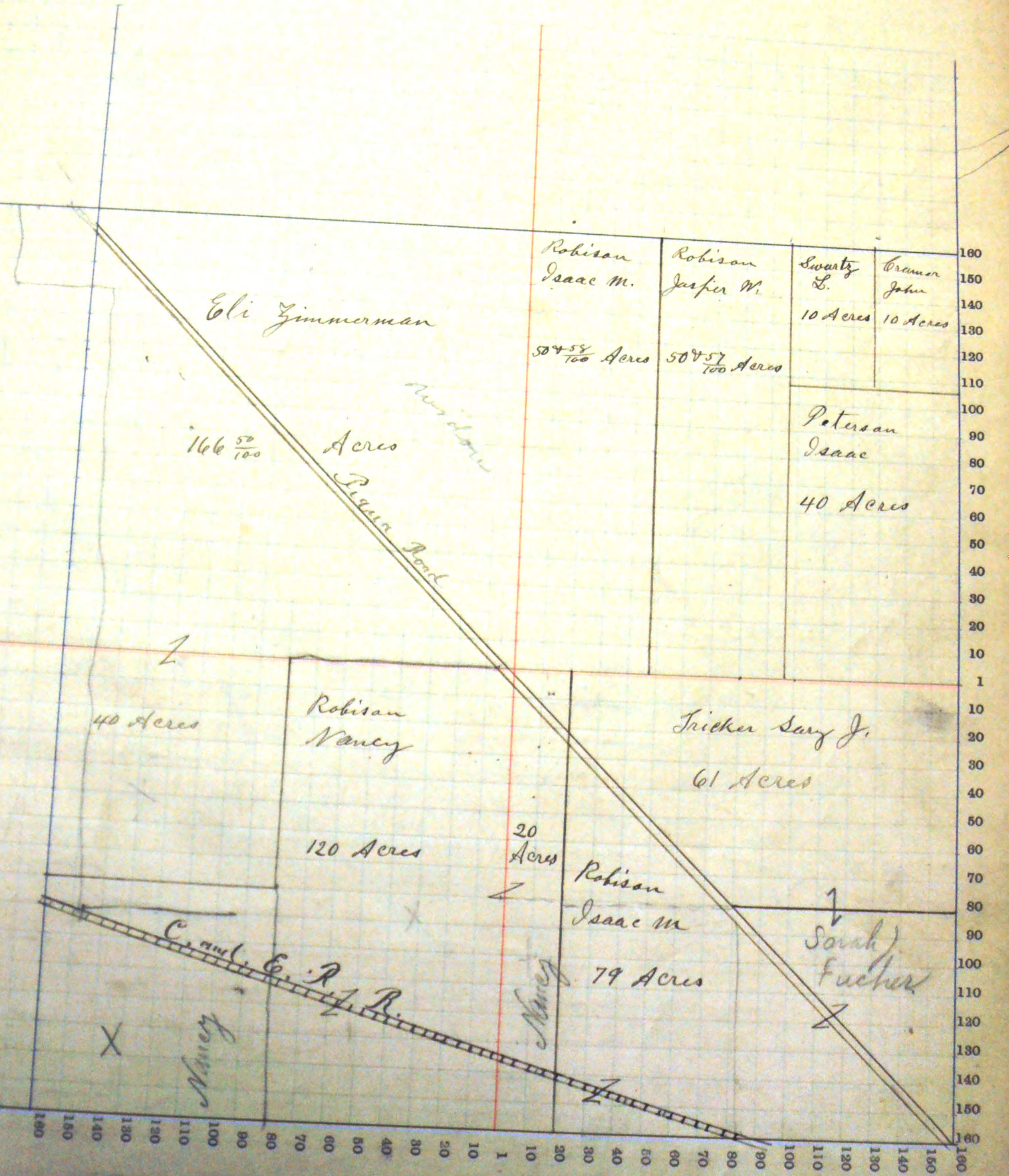
Township, No.

NAMES OF OWNERS.	Number on Plat.	DESCRIPTION.	Section.	Township.	Range.	Acres.	Hundredths.	Value of Lands.	Value of Improvements.	Value of Lands and Improvements.
			1	27	14					
Swartz Lewis		N/4 NW NE	"	"	"	10		400 250	50	450 300
Sarama John		1/2 E/2 NE	"	"	"	10		400 250	50	450 300
Robison Isaac M		E/4 S/2 SE	"	"	"	70		2800 1750	25	2825 1775
Do		W/4 NE	"	"	"	50	58	2075 1263	25	1298 1288
Do		1/4 S/2 SE	"	"	"	9		2250 225	50	275 275
Robison Jasper W		E/4 NE	"	"	"	50	50	2020 1202	100	2120 1302
Zimmerman Eli		NW SW	"	"	"	40		1400 1040	—	1400 1040
Do		NW	"	"	"	166	50	7490 4350	100	7590 4450
Peterson Isaac		S/4 NE	"	"	"	40		1600 1000	50	1650 1050
Trick Sarah J		E/4 S/2 SE	"	"	"	60		1800 1440	640	2440 2080
Robison Nancy		SW SW	"	"	"	40		1200 1000	150	1350 1150
Do		E/2 SW	"	"	"	100		3000 2400	988	3988 2388

SECTION No. 1

Congressional Township No. 27, R. 14

Scale—Forty rods to an inch, or ten rods to a space, Congress Land, which is one mile square for a section.
 Number of acres in this section, according to the United States Survey,



COUNTY, INDIANA, 189

Assessor's Plat-Book for

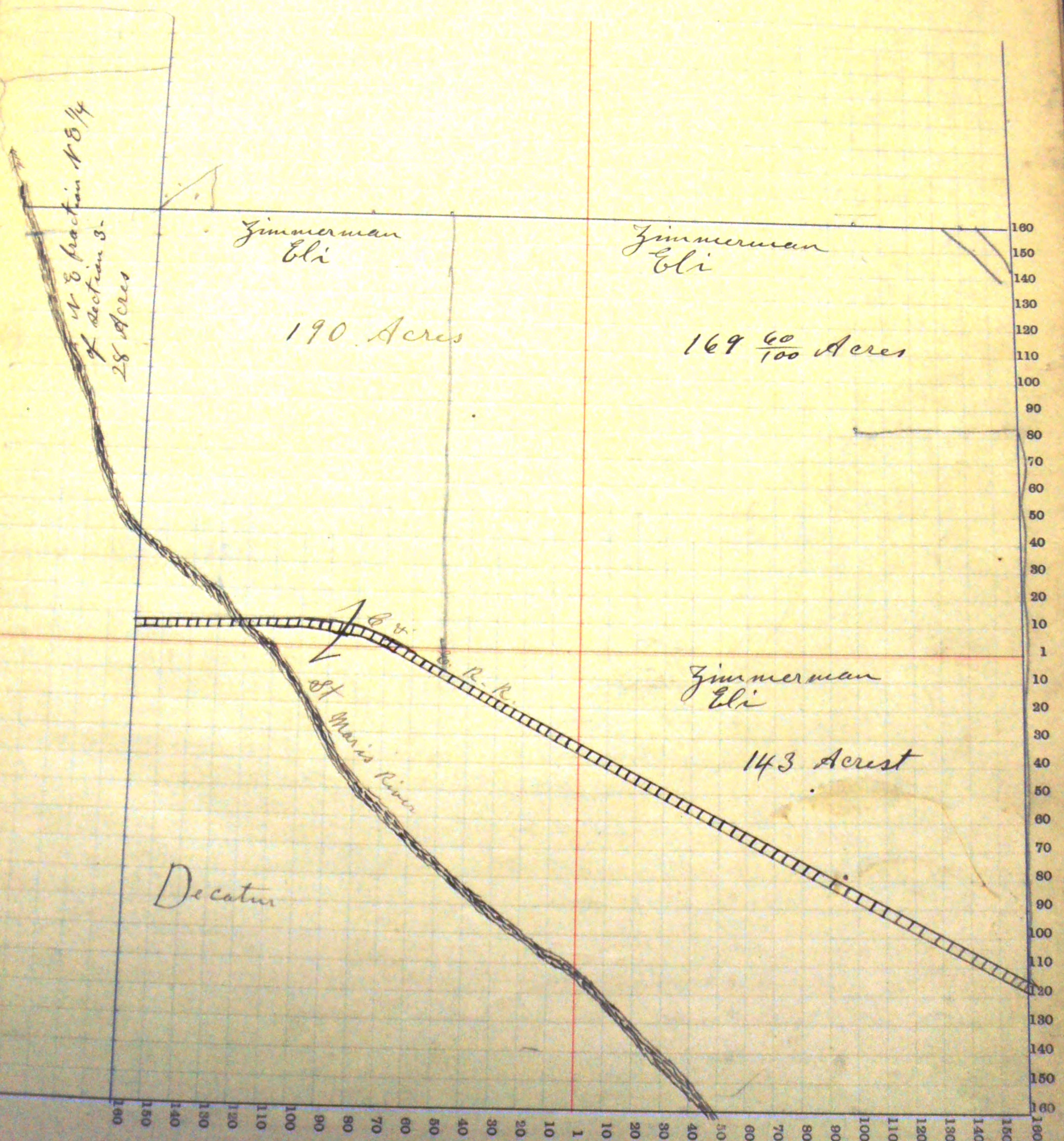
Township, No.

NAMES OF OWNERS.	Number on Plat.	DESCRIPTION.	Section.	Township.	Range.	Acres.	Hundredths.	Value of Lands.	Value of Improvements.	Value of Lands and Improvements.
			2	29	14					
Do Zimmerman Eli		NW E/2	"	"	"	190 ³⁰		4500 5700	875	10,375 6575
			"	"	"	312 ³³		10296	130	10426

SECTION No. 2

Congressional Township No. 27, R. 14

Scale—Forty rods to an inch, or ten rods to a space, Congress Land, which is one mile square for a section.
Number of acres in this section, according to the United States Survey,



N 8 fraction N 8 1/4
of section 3.
28 Acres

Zimmerman
Eli
190 Acres

Zimmerman
Eli
169 ⁶⁰/₁₀₀ Acres

Zimmerman
Eli
143 Acres

Decatur

184
St. Maria River
R.R.

160 150 140 130 120 110 100 90 80 70 60 50 40 30 20 10 1 10 20 30 40 50 60 70 80 90 100 110 120 130 140 150 160

160
150
140
130
120
110
100
90
80
70
60
50
40
30
20
10
1
10
20
30
40
50
60
70
80
90
100
110
120
130
140
150
160

COUNTY, INDIANA, 189

Township, No. _____

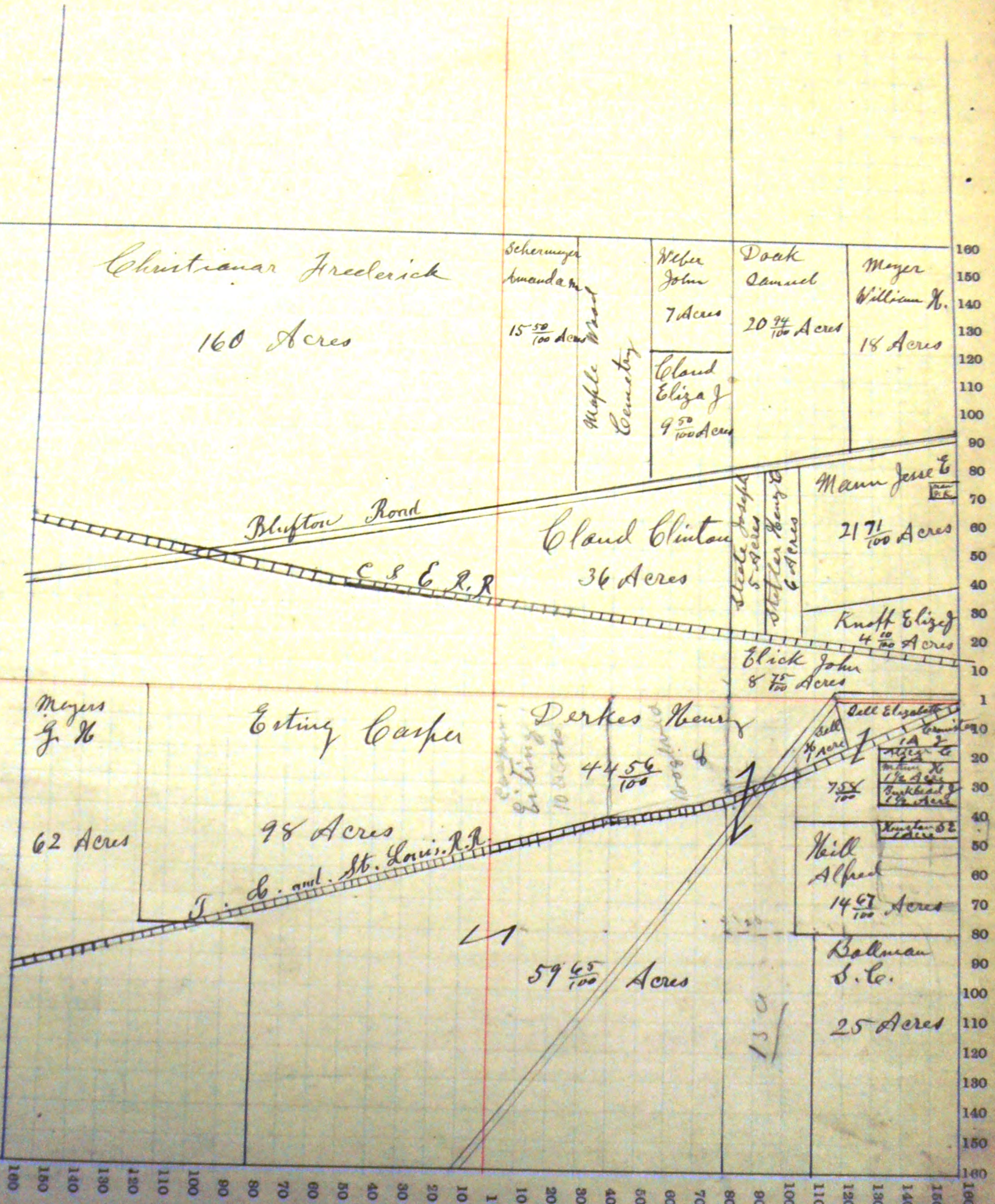
Assessor's Plat-Book for

NAMES OF OWNERS	Number on Plat.	DESCRIPTION.	Section.	Township.	Range.	Acres.	Hundredths.	Value of Lands.	Value of Improvements.	Value of Lands and Improvements.
			4	27	14					
* Meyer Charles J.		pt NE 1/4 SE 1/4	"	"	"	1		40	260	300
* Meyer William H.		NE pt E/2 NE 1/4	"	"	"	18		1720	608	12480
* Krustmano Fredrick		SW 1/4	"	"	"	160		4620	700	5320
* Doak Samuel		SW pt E/2 NE 1/4	"	"	"	20	94	770	800	2990
* Mann Jesse E		pt E/2 NE 1/4	"	"	"	21	71	270	112	382
* Mann J. K.		pt E/2 NE	"	"	"	33	33	14	350	364
* Schiermeier Amanda m		W pt W pt W/2 NE	"	"	"	15	50	529	425	482
* Steel Joseph		pt E NE	"	"	"	5		185	25	210
* Stetler Henry		pt E/2 NE	"	"	"	6		222	30	428
* Sells Hazkiah		pt E/2 SE	"	"	"	1		40	10	50
* Sells Elizabeth		pt E/2 SE	"	"	"	6	73	515	50	560
do		pt SE	"	"	"		89	30	250	280
do		pt W/2 NE	"	"	"	7		250	35	385
Mann Harlow		pt NE 1/4 SE 1/4	"	"	"	1	50	60	10	70
Knoff Eliza J.		pt SE 1/4 NE 1/4	"	"	"	4	10	164	316	480
Cloud Elizabeth J.		S pt W pt W/2 NE 1/4	"	"	"	9	50	329	48	377
Cloud Clinton		pt W/2 NE 1/4	"	"	"	36		1122	300	1422
Cronster John		pt NE 1/4 SE 1/4	"	"	"	4		40	210	250
Elrick John		SW E/2 NE	"	"	"	8	77	556	544	980
Meyer G. W.		pt W/2 SW	"	"	"	60		1560	324	1884
Decker Henry		W pt E/2 SE	"	"	"	26		936	130	1066
do		W pt NW SE	"	"	"	18	50	592	20	612
Hill Alfred		pt NE SE	"	"	"	14	67	587	87	674
Burkhead John B		pt NE SE	"	"	"	1	50	60	10	70
Eiting Casper		E pt W/2 SW	"	"	"	18		468	—	468
do		E/2 SW	"	"	"	80		2400	912	3312
do		SW SE	"	"	"	40		1250	350	1630
do		S/2 NW SE	"	"	"	20		640	—	640
Huston Sarah E		pt NE 1/4 SE 1/4	"	"	"	1		40	210	250
Bollman S. C.		E pt SE SE	"	"	"	25		1000	75	1075

SECTION No. 1

Congressional Township No. _____, R. _____

*Scale—Forty rods to an inch, or ten rods to a space, Congress Land, which is one mile square for a section.
Number of acres in this section, according to the United States Survey.*



COUNTY, INDIANA, 189

Township, No.

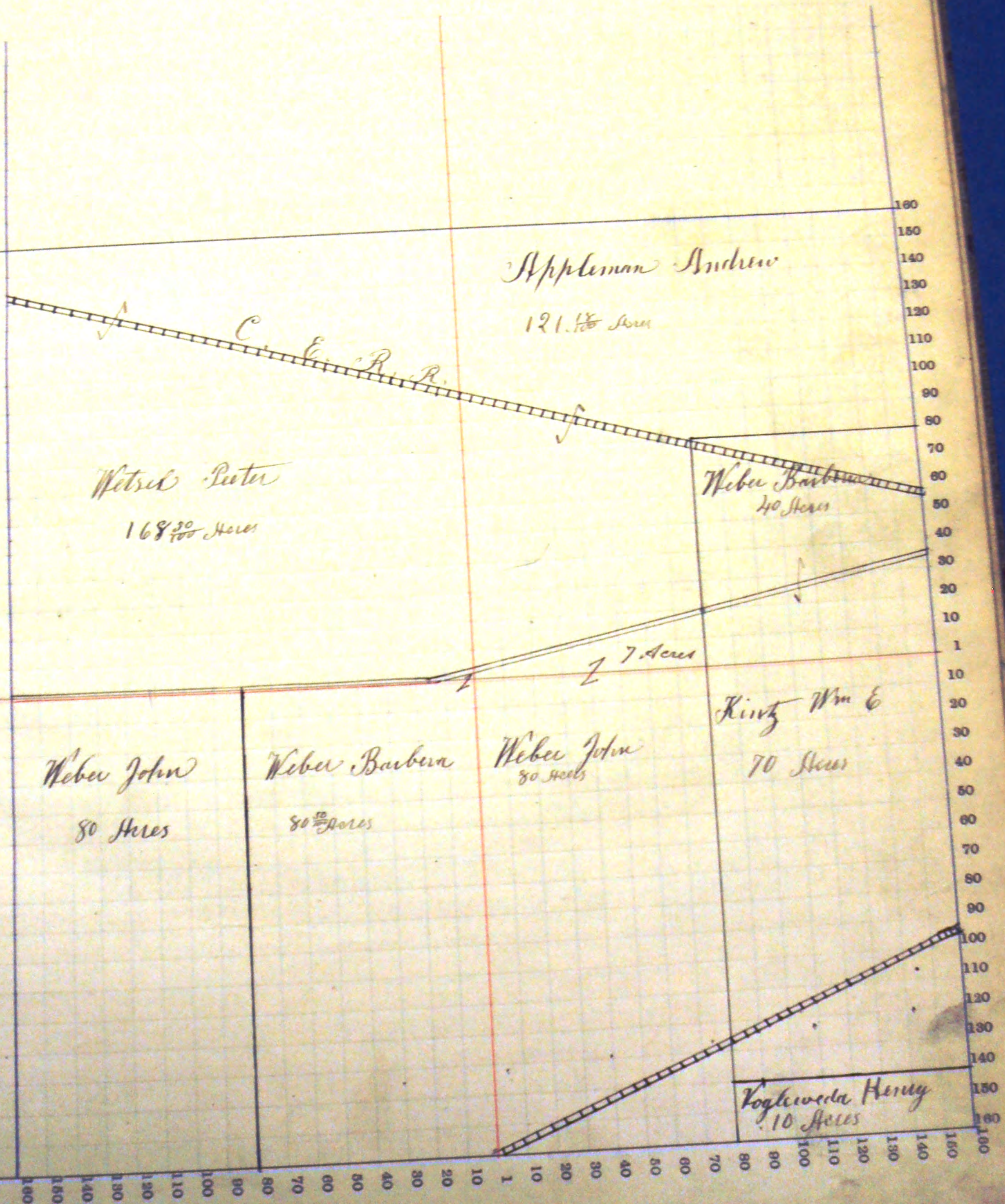
Assessor's Plat-Book for

NAMES OF OWNERS.	Number on Plat.	DESCRIPTION.	Section.	Township.	Range.	Acres.	Hundredths.	Value of Lands.	Value of Improve- ments.	Value of Lands and Improve- ments.
			5	27	14					
Cyplemann Andrew		1/4 NE	"	"	"	121	18	2950	628	3578
Wetzel Peter		SW	"	"	"	168	50	3800	700	4500
Weber Barbara		1/2 SW	"	"	"	80	50	1932	274	2206
Do " " " "		1/4 NE	"	"	"	40		925	135	1060
Weber John		1/2 SW	"	"	"	80		1920	240	2160
Do " " " "		1/2 SE	"	"	"	80		1950	400	2350
Do " " " "		1/4 NW	"	"	"	7		175	25	200
Weber										
Uoglewede Henry		1/4 SE	"	"	"	10		250	50	300
Kintz Wm E		1/4 SE	"	"	"	70		1700	224	1924

SECTION No. 5

Congressional Township No. 27 R. 14

Scale—Forty rods to an inch, or ten rods to a space. Congress Land, which is one mile square for a section.
Number of acres in this section, according to the United States Survey.



COUNTY, INDIANA, 189

Assessor's Plat-Book for

Township, No.

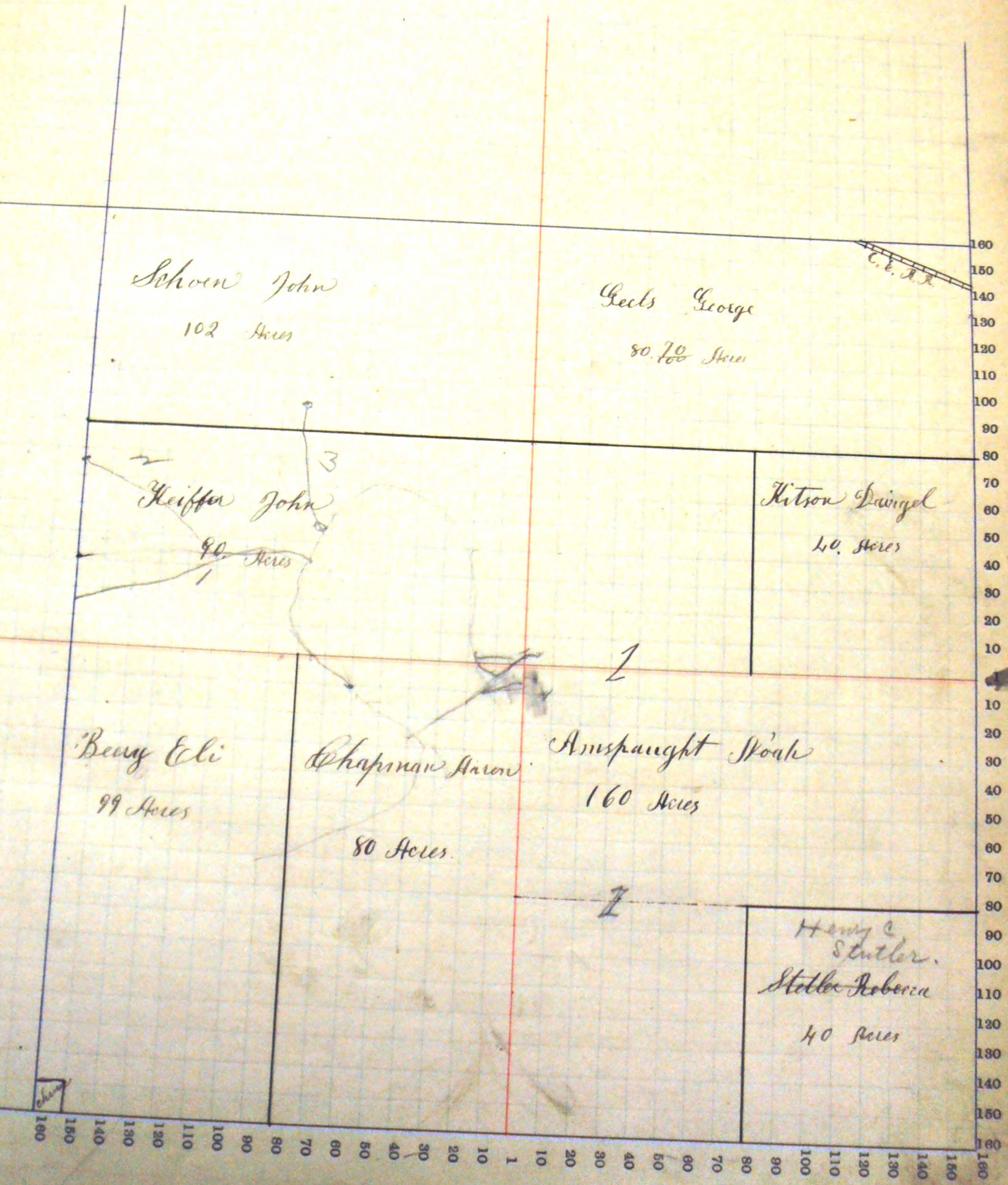
NAMES OF OWNERS.	Number on Plat.	DESCRIPTION.	Section.	Township.	Range.	Acres.	Hundredths.	Value of Lands.	Value of Improvements.	Value of Lands and Improvements.
Geels George		N/2 NE	6	27	14	88	72	2000	500	2500
Schone John		N/2 NW	"	"	"	102		2346	378	2724
Keiffa John		S/2 SW	"	"	"	90		1980	550	2530
Nitson Laimel		SE NE	"	"	"	40		880	260	1140
Beery Eli		W/2 SW	"	"	"	89		2277	1200	3477
Omspaugh Noah		W/2 SE	"	"	"	80		1840	1000	2840
" " " "		NE SE	"	"	"	40		920	160	1080
" " " "		SW NE	"	"	"	40		920	50	970
Chapman Aaron		E/2 SW	"	"	"	80		1840	275	2115
Stella Rebecca		SE SE	"	"	"	40		920	200	1120

SECTION No. 6

210
13

Congressional Township No. 27, R. 14

Scale—Forty rods to an inch, or ten rods to a space, Congress Land, which is one mile square for a section.
Number of acres in this section, according to the United States Survey,



COUNTY, INDIANA, 189

Township, No. _____

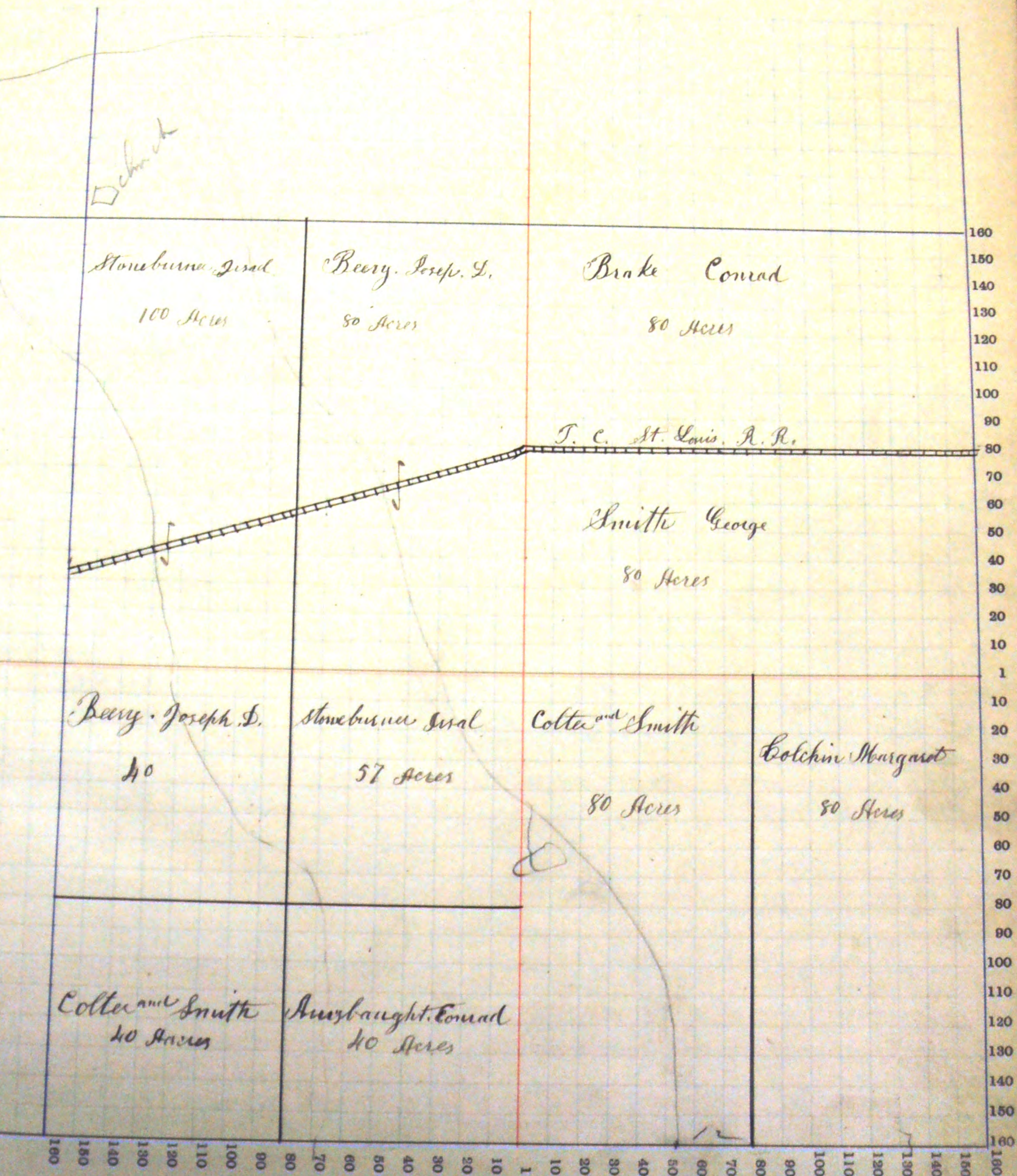
Assessor's Plat-Book for _____

NAMES OF OWNERS.	Number on Plat.	DESCRIPTION.	Section.	Township.	Range.	Acres.	Hundredths.	Value of Lands.	Value of Improvements.	Value of Lands and Improvements.
			7	27	14					
do Stoneburner pral		W/2 NW	"	"	"	100		2300	750	3050
do " " " " " "		N/4 E/4 SW	"	"	"	57		1254	—	1254
do Beery Joseph D		E/2 NW	"	"	"	80		1794	300	2094
do " " " " " "		NW SW	"	"	"	40		880	—	880
Brake Conrad		N/2 NE	"	"	"	80		1794	500	2294
Smith George		S/2 NE	"	"	"	80		1840	500	2340
do Collier & Smith		SW SW	"	"	"	40		880	260	1140
do " " " " " "		W/2 SE	"	"	"	80		1840	40	1880
Colchin Margareth		E/2 SE	"	"	"	80		1840	360	2200
Ausbaught Conrad		S/4 S/4 SW	"	"	"	40		880	115	995

SECTION No. 7.

Congressional Township No. 27, R. 14

Scale—Forty rods to an inch, or ten rods to a space, Congress Land, which is one mile square for a section.
Number of acres in this section, according to the United States Survey,



COUNTY, INDIANA, 189

Assessor's Plat-Book for

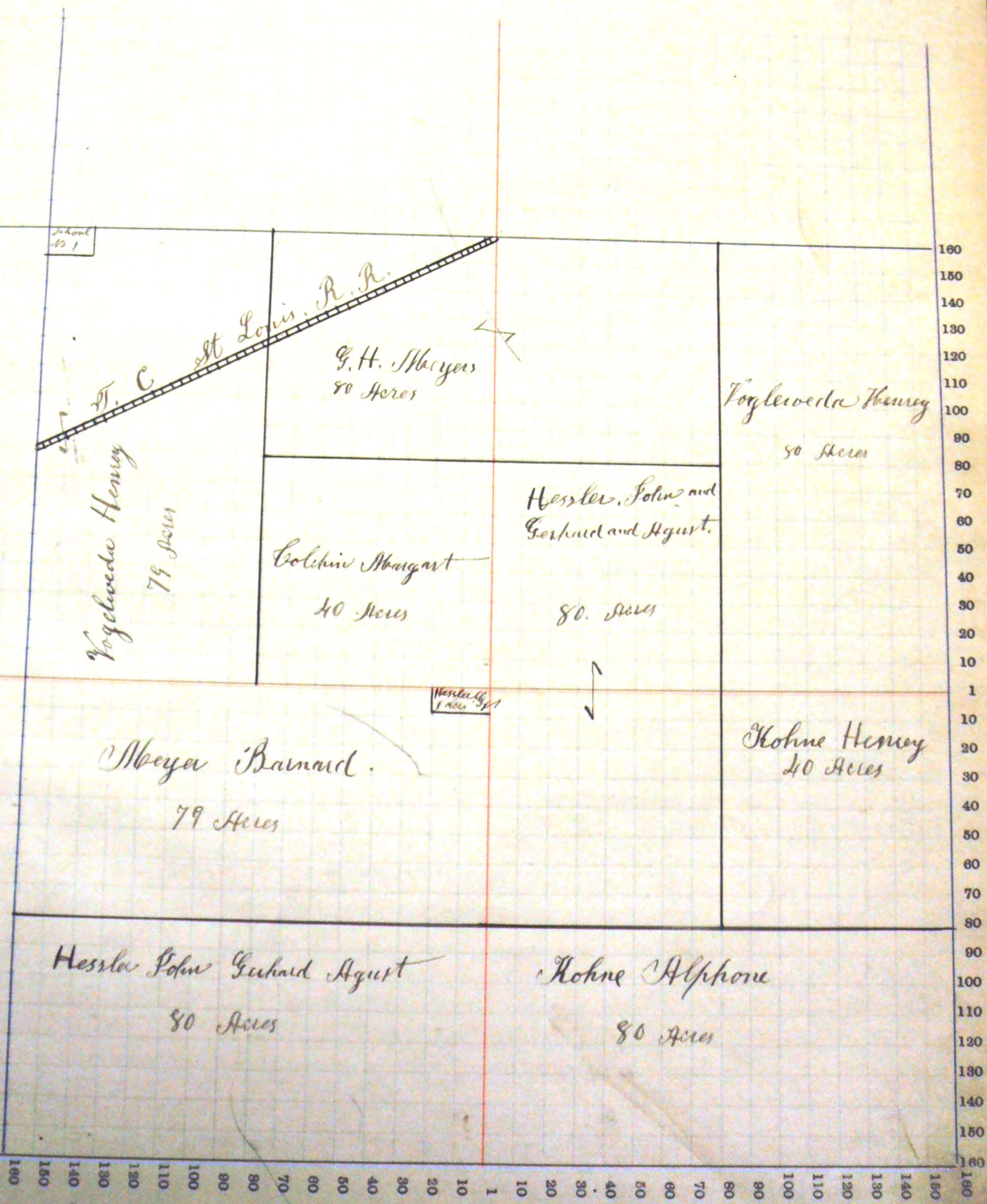
Township, No.

NAMES OF OWNERS.	Number on Plat.	DESCRIPTION.	Section.	Township.	Range.	Acres.	Hundredths.	Value of Lands.	Value of Improve-ments.	Value of Lands and Improve-ments.
			8	27	14					
do Meyer G. H.		NE NW	"	"	"	40		760	96	856
do " " " " "		NW NE	"	"	"	40		460	560	1520
do Nagleweide Henry		E/2 NE	"	"	"	80		1920	500	2420
do " " " " "		W/2 NW	"	"	"	79		1700	160	1860
do Bolkin Margaret		SE NW	"	"	"	40		960	140	1100
do Hessler John Gerhard August		NW SE	"	"	"	40		960	596	1556
do " " " " " "		SW NE	"	"	"	40		800	96	896
do " " " " " "		S/2 SW	"	"	"	80		1760	80	1840
do Meyer Barnard		W/2 SW	"	"	"	79		1738	165	1903
do Hessler Gerhard Jr		NE cor W/2 SW	"	"	"	1		23	2	25
do Kohne Henry		NE SE	"	"	"	40		960	710	1670
do Kohne Alphons		S/2 SE	"	"	"	80		1760	650	2410

SECTION No. 8

Congressional Township No. 27 R. 14

Scale—Forty rods to an inch, or ten rods to a space, Congress Land, which is one mile square for a section.
Number of acres in this section, according to the United States Survey,



School No. 1

St. Louis, R.R.

Vogelweide Henry
79 Acres

G.H. Meyers
80 Acres

Vogelweide Henry
50 Acres

Colchin Abigail
40 Acres

Hessler, John and
Gerhard and August.
80 Acres

Meyer Barnard.
79 Acres

Hessler's
1/2 Acre

Kohne Henry
40 Acres

Hessler John Gerhard August
80 Acres

Kohne Alphonse
80 Acres

160 150 140 130 120 110 100 90 80 70 60 50 40 30 20 10 1 10 20 30 40 50 60 70 80 90 100 110 120 130 140 150 160

COUNTY, INDIANA, 189

Assessor's Plat-Book for

Township, No.

NAMES OF OWNERS.	Number on Plat.	DESCRIPTION.	Section.	Township.	Range.	Acres.	Hundredths.	Value of Lands.	Value of Improvements.	Value of Lands and Improvements.
Nuttman Caroline		E 1/2 S E 1/4	9	27	14	80		4800		4800
Eiting Henry		E 1/2 N E	"	"	"	80		2400	475	2875
Eiting Casper		SW 1/4 N E	"	"	"	40		1120	120	1240
Forbing Mary		SW N E	"	"	"	40		1020	240	1260
Do " " " "		SW N W	"	"	"	53	33	1440	75	1515
Kohne Henry		pt SW N W	"	"	"	53	33	1275	80	1355
Do " " " "		SW SW	"	"	"	40		800	160	960
Vogelweide Henry		1/2 W side N W	"	"	"	26	66	666	—	666
Hessler John Gerhard August		SW cor N E	"	"	"	26	66	500	50	550
Smith Joseph		und 1/8 N E SW	"	"	"	10		250	40	290
Do " " " "		und 1/8 N E SW	"	"	"	70		1750	406	2156
Barkley Andrew		N W S E	"	"	"	40		1040	500	1540
Will Anthony		S E S W	"	"	"	40		960	360	1320
Elzey Alfred		SW S E	"	"	"	40		1000	160	1160

SECTION NO. 9

Congressional Township No. 27, R. 14

Scale—Forty rods to an inch, or ten rods to a space, Congress Land, which is one mile square for a section.
 Number of acres in this section, according to the United States Survey,

