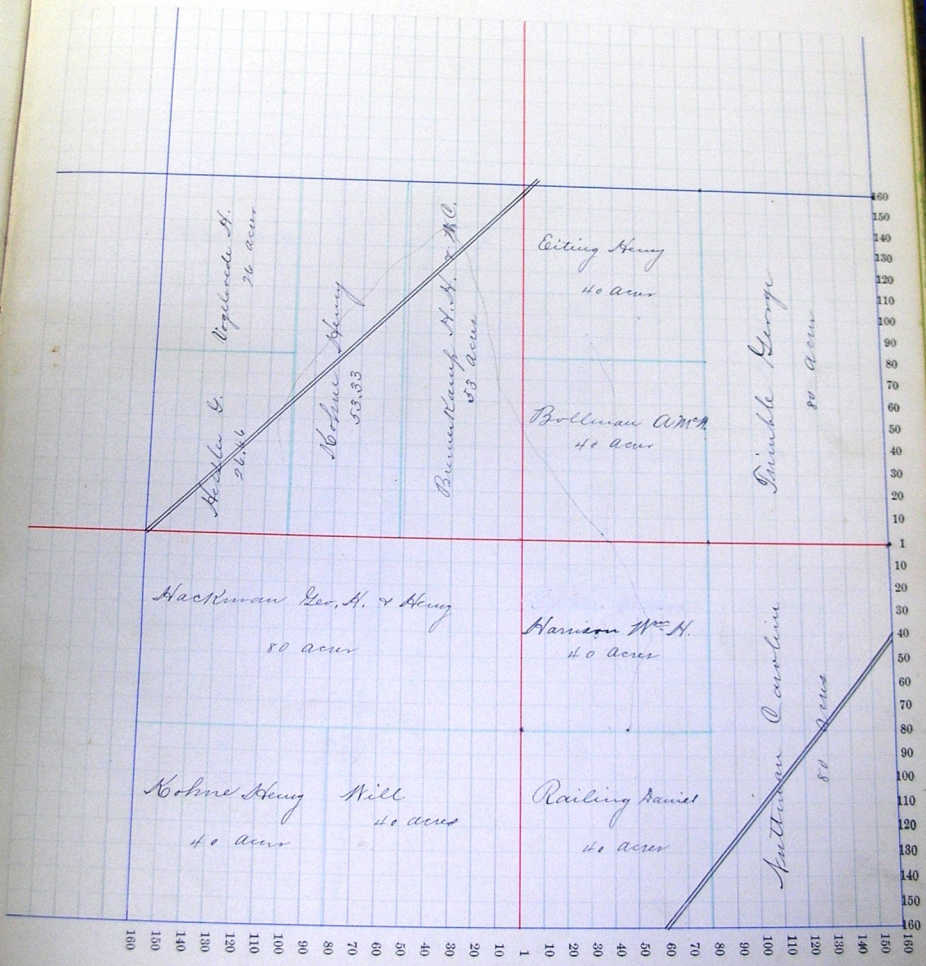


Section No. 9

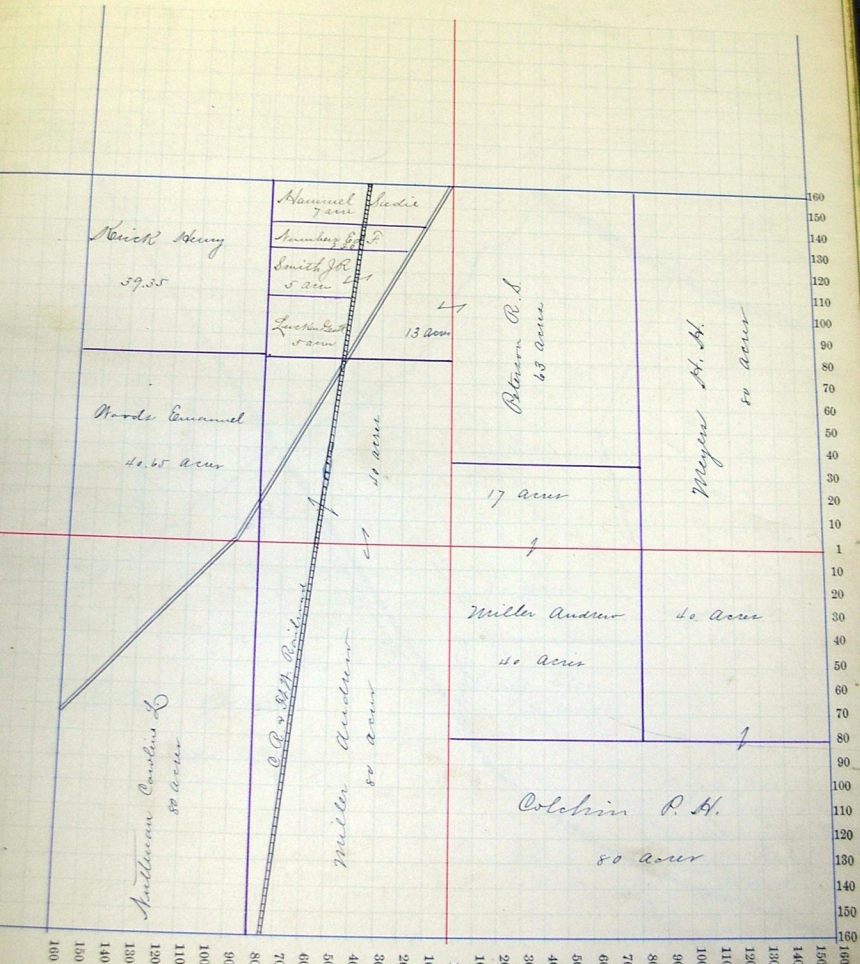
Congressional Township No. 27, R. 14

Scale—Forty rods to an inch, or ten rods to a space. Congress Land, which is one mile square for a section.
 Number of acres in this section, according to the United States Survey.

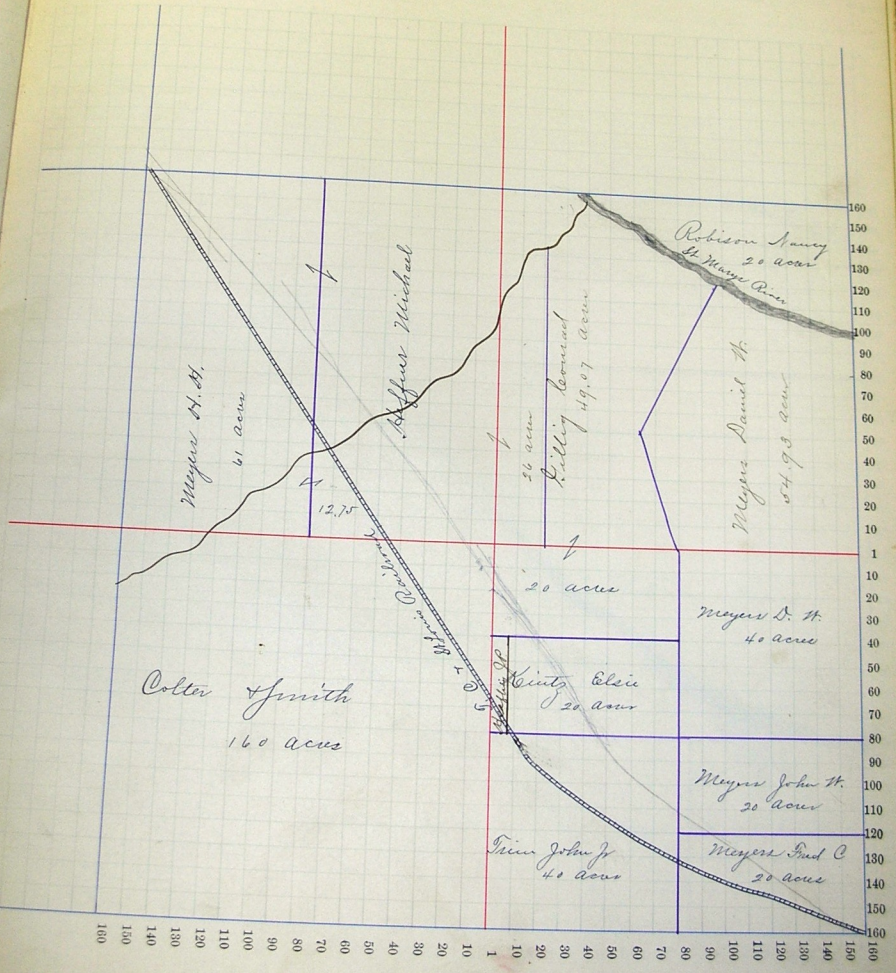


Congressional Township No. 27, R. 14

Scale—Forty rods to an inch, or ten rods to a space. Congress Land, which is one mile square for a section.
 Number of acres in this section, according to the United States Survey.



Scale—Forty rods to an inch, or ten rods to a space. Congress Land, which is one mile square for a section.
 Number of acres in this section, according to the United States Survey.



Section No. 12

Congressional Township No. 27, R. 14

Scale—Forty rods to an inch, or ten rods to a space. Congress Land, which is one mile square for a section.
 Number of acres in this section, according to the United States Survey,

