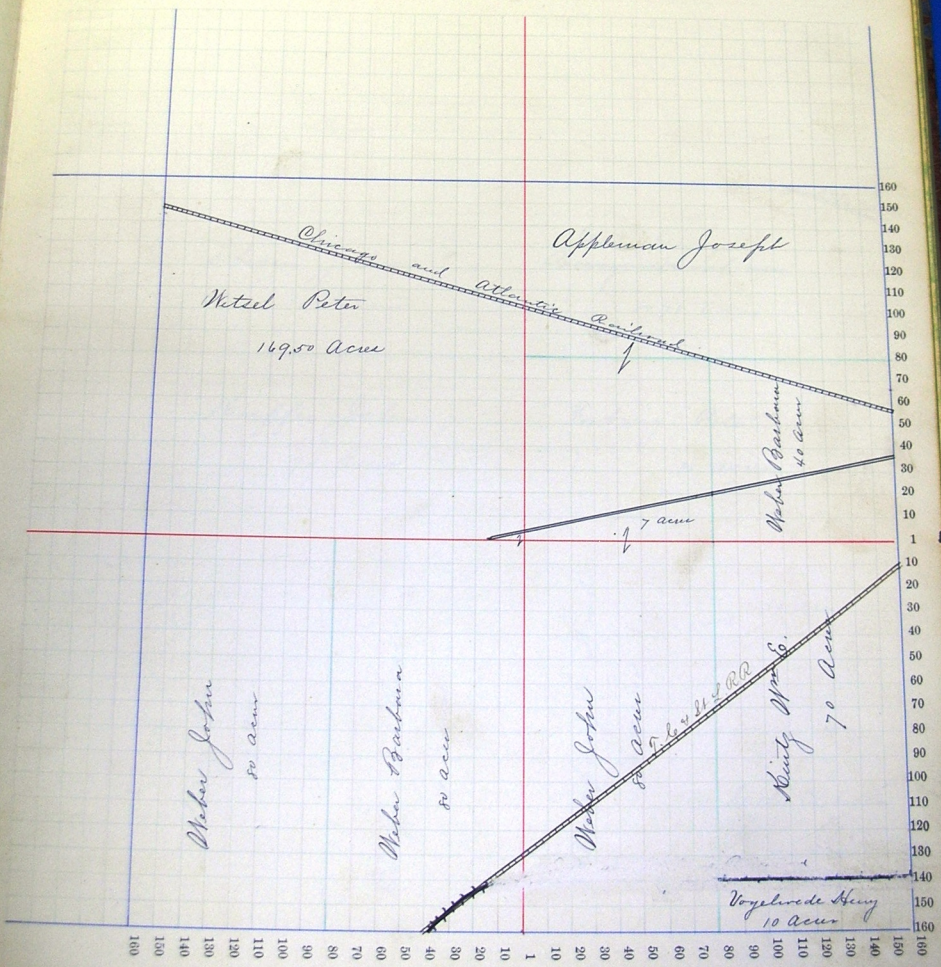


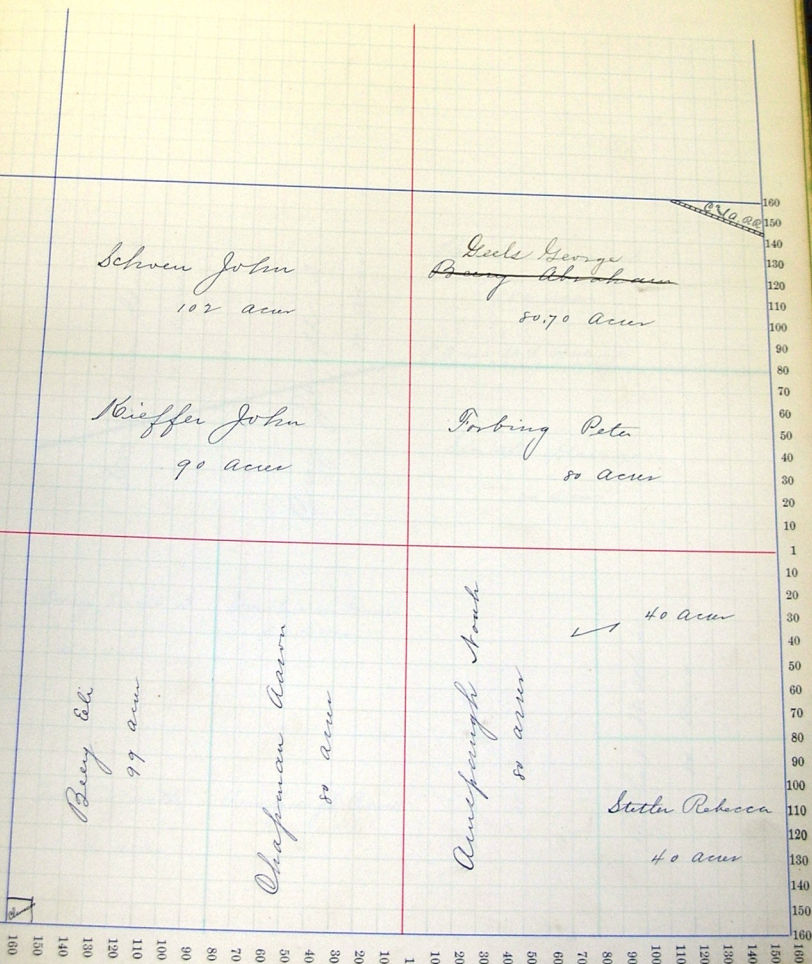
Scale—Forty rods to an inch, or ten rods to a space. Congress Land, which is one mile square for a section.  
Number of acres in this section, according to the United States Survey.



Section No. 6

Congressional Township No. 27, R. 14

Scale—Forty rods to an inch, or ten rods to a space. Congress Land, which is one mile square for a section.  
Number of acres in this section, according to the United States Survey.



Schwan John  
102 acres

Geels George  
~~Perry Abraham~~  
50.70 acres

Kieffer John  
90 acres

Forbing Peter  
80 acres

Berg Est.  
99 acres

Chapman Aaron  
80 acres

Auncspough Jacob  
80 acres

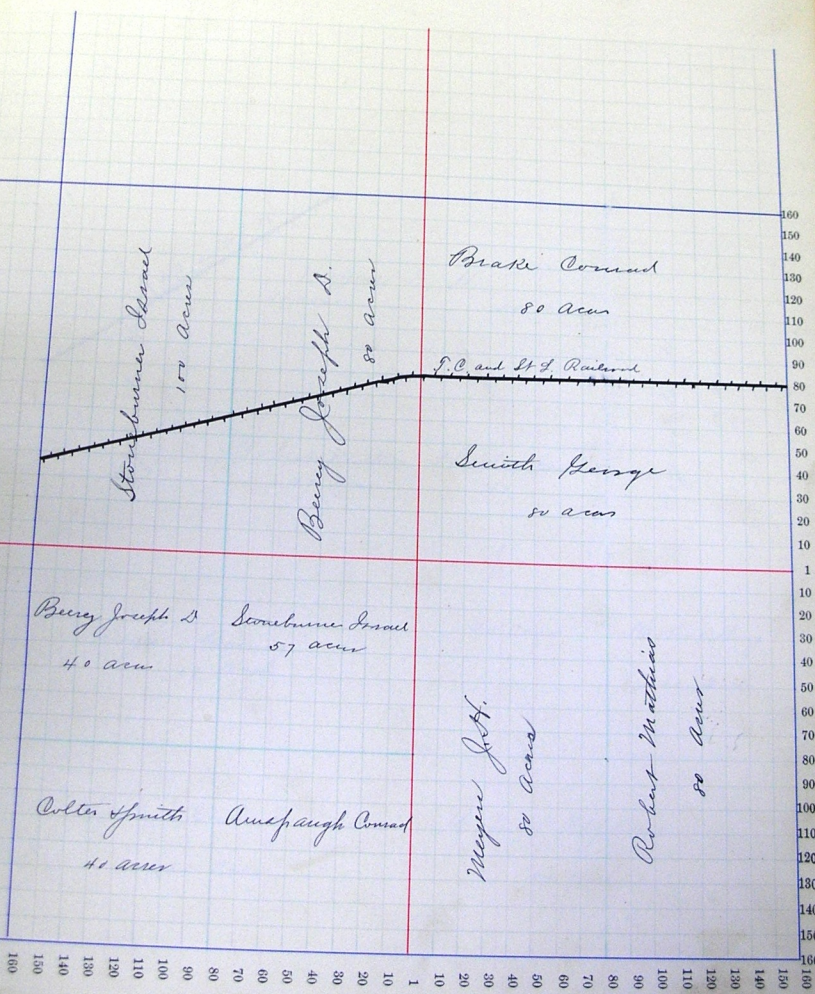
↖ 40 acres

Stetler Rebecca  
40 acres

Section No. 7

Congressional Township No. 27, R. 14

Scale—Forty rods to an inch, or ten rods to a space. Congress Land, which is one mile square for a section.  
Number of acres in this section, according to the United States Survey.



Stonebume Israel  
150 acres

Berry Joseph A.  
80 acres

Brake Conrad  
80 acres

F.C. and St. L. Railroad

Smith George  
50 acres

Berry Joseph B. 40 acres  
Stonebume Israel 57 acres

Colter J. Smith 41 acres  
Amey J. H. 50 acres

Amey J. H.  
50 acres

Robert Mathias  
50 acres

Section No. 8

Congressional Township No. 27, R. 14

Scale—Forty rods to an inch, or ten rods to a space. Congress Land, which is one mile square for a section.  
 Number of acres in this section, according to the United States Survey.

