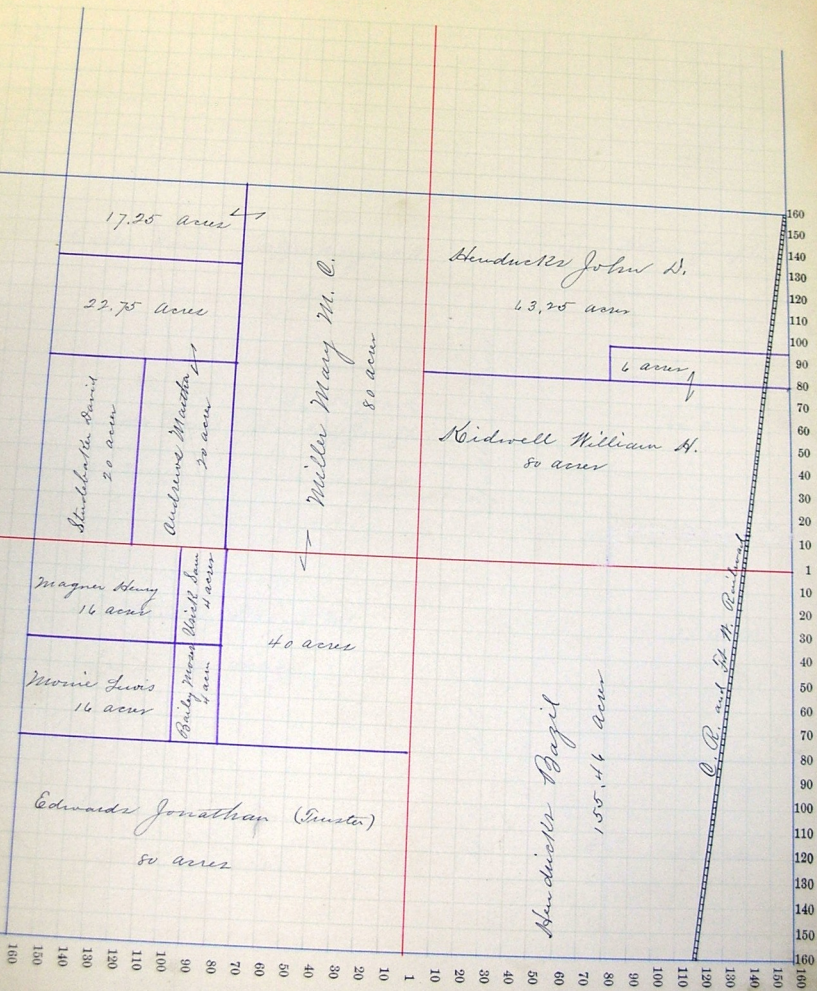


Congressional Township No. 27, R. 14

Scale—Forty rods to an inch, or ten rods to a space. Congress Land, which is one mile square for a section.  
 Number of acres in this section, according to the United States Survey.



Congressional Township No. 27, R. 14

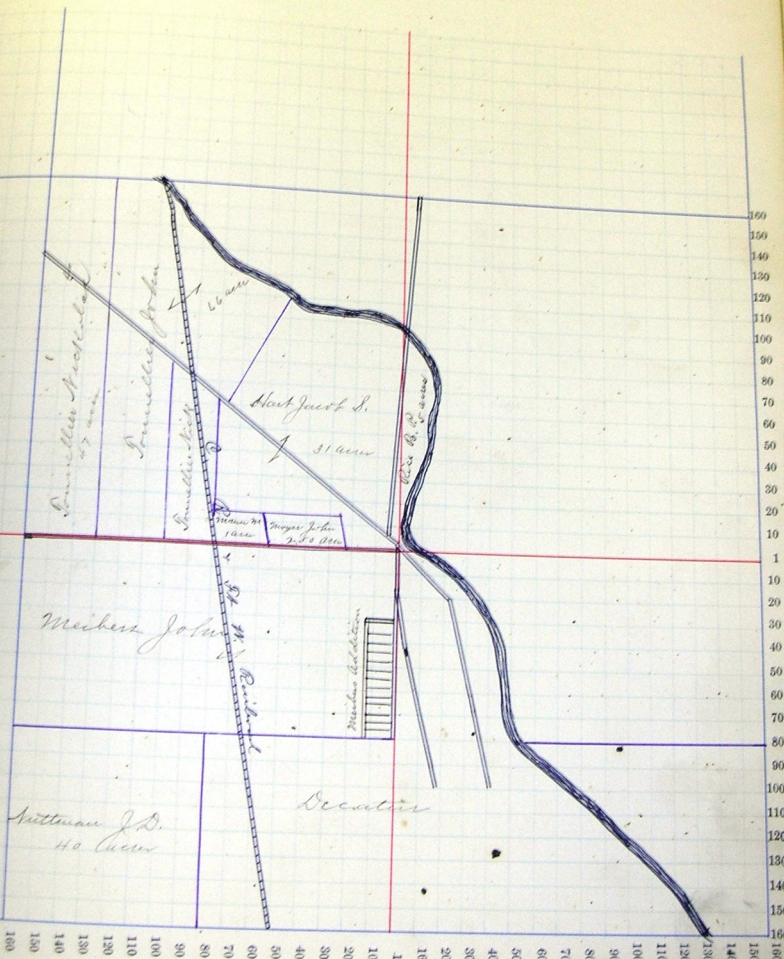
Scale—Forty rods to an inch, or ten rods to a space. Congress Land, which is one mile square for a section.  
 Number of acres in this section, according to the United States Survey, \_\_\_\_\_



Section No. 34

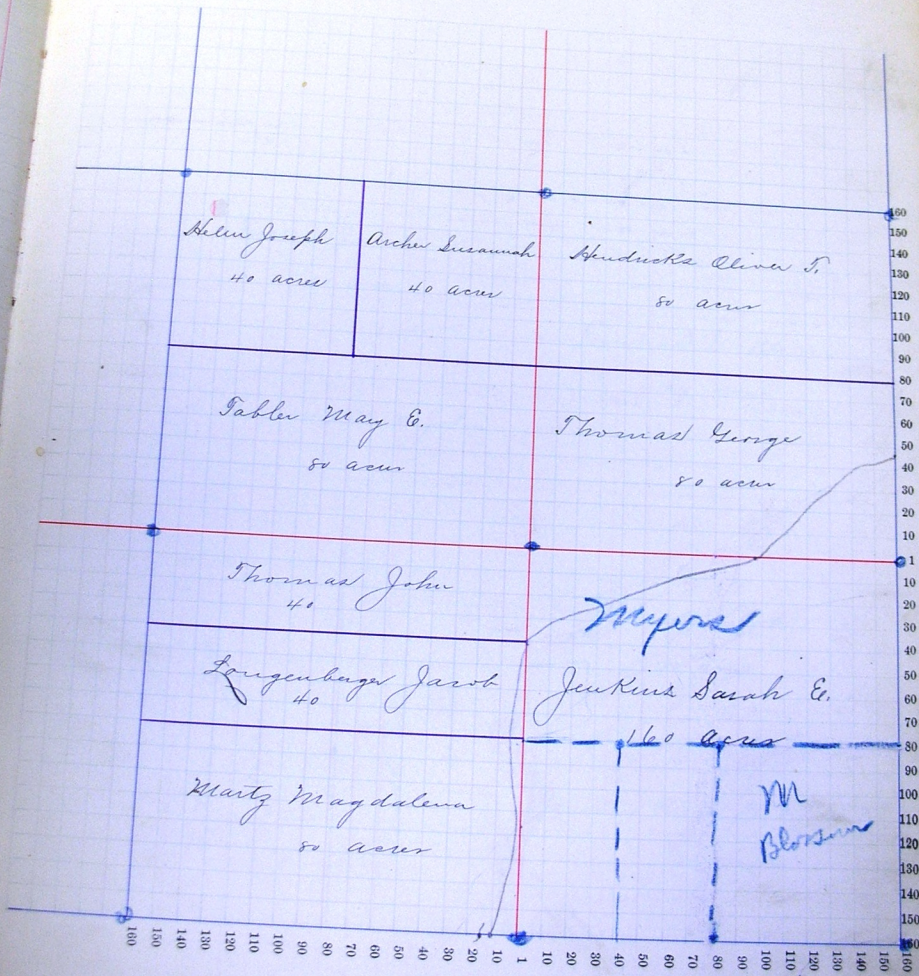
Congressional Township No. 28 R. 14

Scale—Forty rods to an inch, or ten rods to a space, Congress Land, which is one mile square for a section.  
Number of acres in this section, according to the United States Survey,



Congressional Township No. 27, R. 14

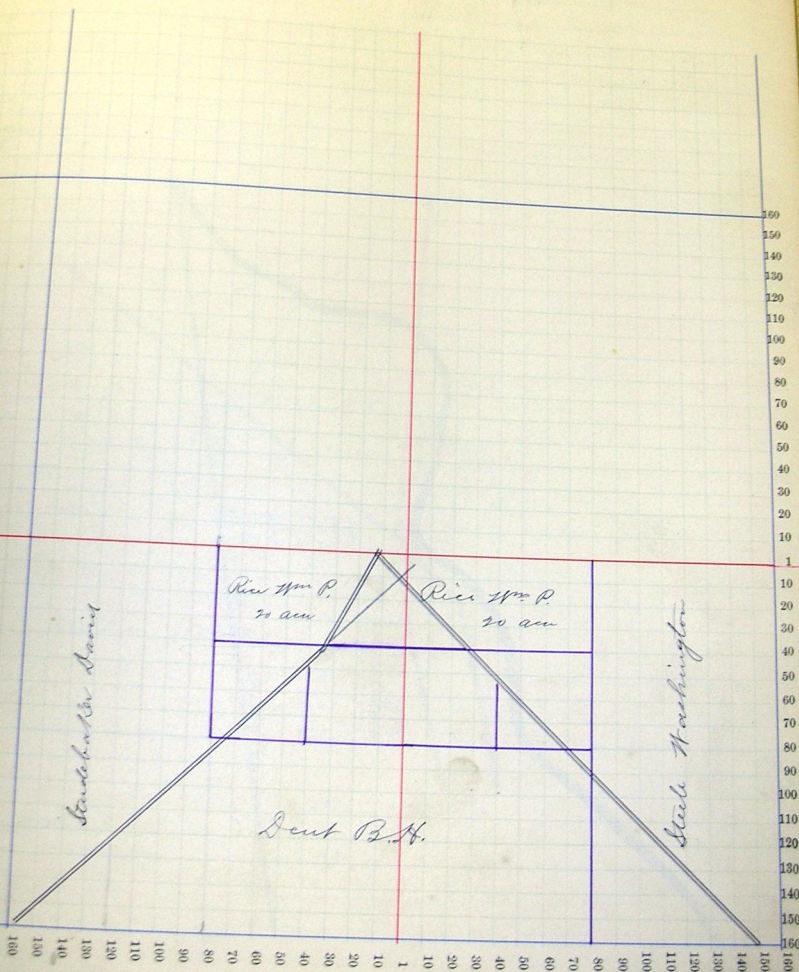
Scale—Forty rods to an inch, or ten rods to a space. Congress Land, which is one mile square for a section.  
Number of acres in this section, according to the United States Survey.



Section No. 35

Congressional Township No. 28, R. 14

Scale—Forty rods to an inch, or ten rods to a space. Congress Land, which is one mile square for a section.  
Number of acres in this section, according to the United States Survey,



Section No. 36

Congressional Township No. 27, R. 14

Scale—Forty rods to an inch, or ten rods to a space. Congress Land, which is one mile square for a section.  
Number of acres in this section, according to the United States Survey.

Friston James N.  
80 acres

Trout S. G. M.  
160 acres

Bowen Wm & John

Muttman J. D.  
80 acres

Cook E. L.  
80 acres

Young Job  
80 acres

Jenkins Chas. M. & Lillie M.  
80 acres

160  
150  
140  
130  
120  
110  
100  
90  
80  
70  
60  
50  
40  
30  
20  
10  
1  
1  
10  
20  
30  
40  
50  
60  
70  
80  
90  
100  
110  
120  
130  
140  
150  
160