

Section No. 25

Congressional Township No. 27, R. 14

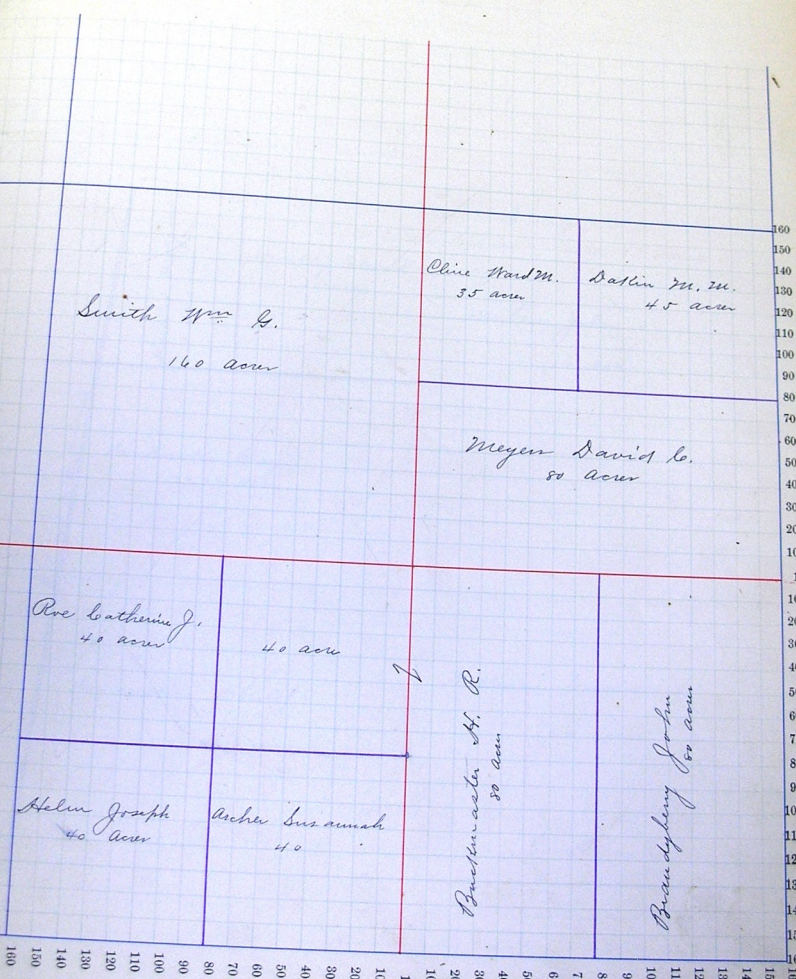
Scale—Forty rods to an inch, or ten rods to a space. Congress Land, which is one mile square for a section.
Number of acres in this section, according to the United States Survey.



Section No. 26

Congressional Township No. 27, R. 14

Scale—Forty rods to an inch, or ten rods to a space. Congress Land, which is one mile square for a section.
Number of acres in this section, according to the United States Survey.



Smith Wm G.
160 acur

Cline Ward M.
55 acur

Dakin M. M.
45 acur

Meyer David G.
80 acur

Roe Catherine J.
40 acur

40 acur

Helin Joseph
40 acur

Becher Susannah
40

Burtonester H. R.
80 acur

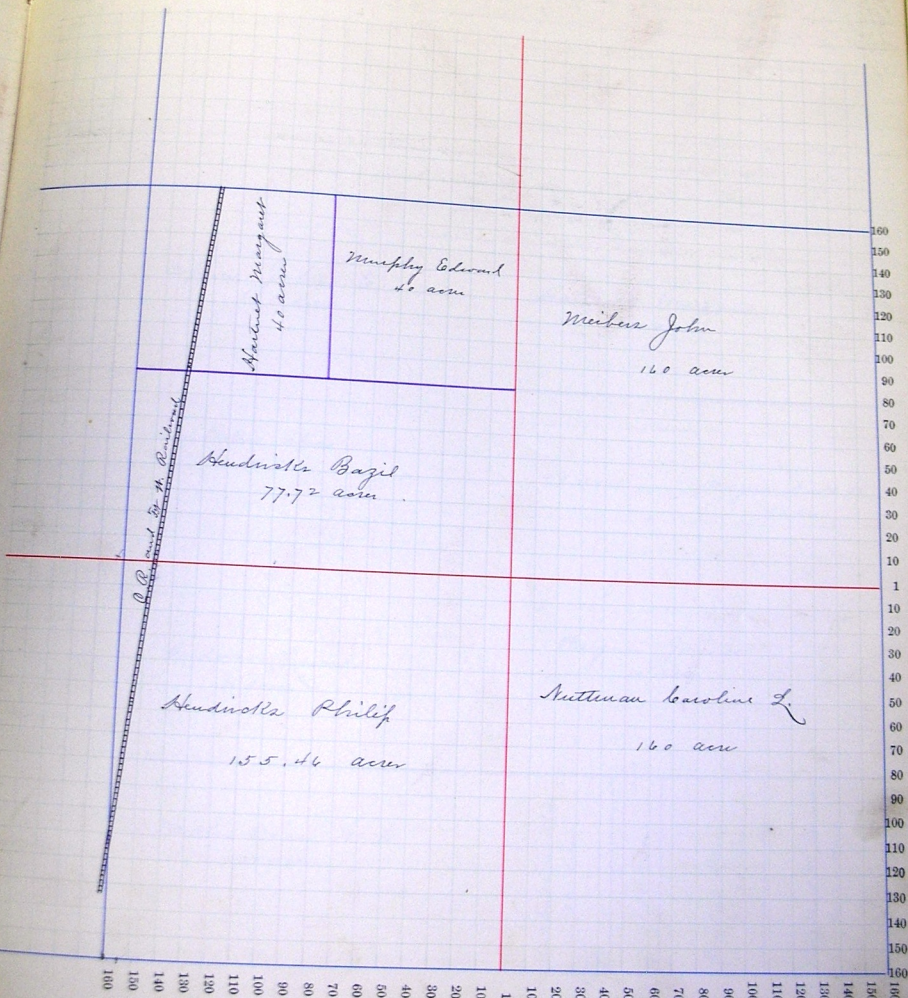
Brandyberry John
80 acur

160
150
140
130
120
110
100
90
80
70
60
50
40
30
20
10
1
10
20
30
40
50
60
70
80
90
100
110
120
130
140
150
160

Section No. 27

Congressional Township No. 27, R. 14

Scale—Forty rods to an inch, or ten rods to a space. Congress Land, which is one mile square for a section.
Number of acres in this section, according to the United States Survey, _____



Section No. 28

Congressional Township No. 27, R. 14

Scale—Forty rods to an inch, or ten rods to a space. Congress Land, which is one mile square for a section.
 Number of acres in this section, according to the United States Survey.

