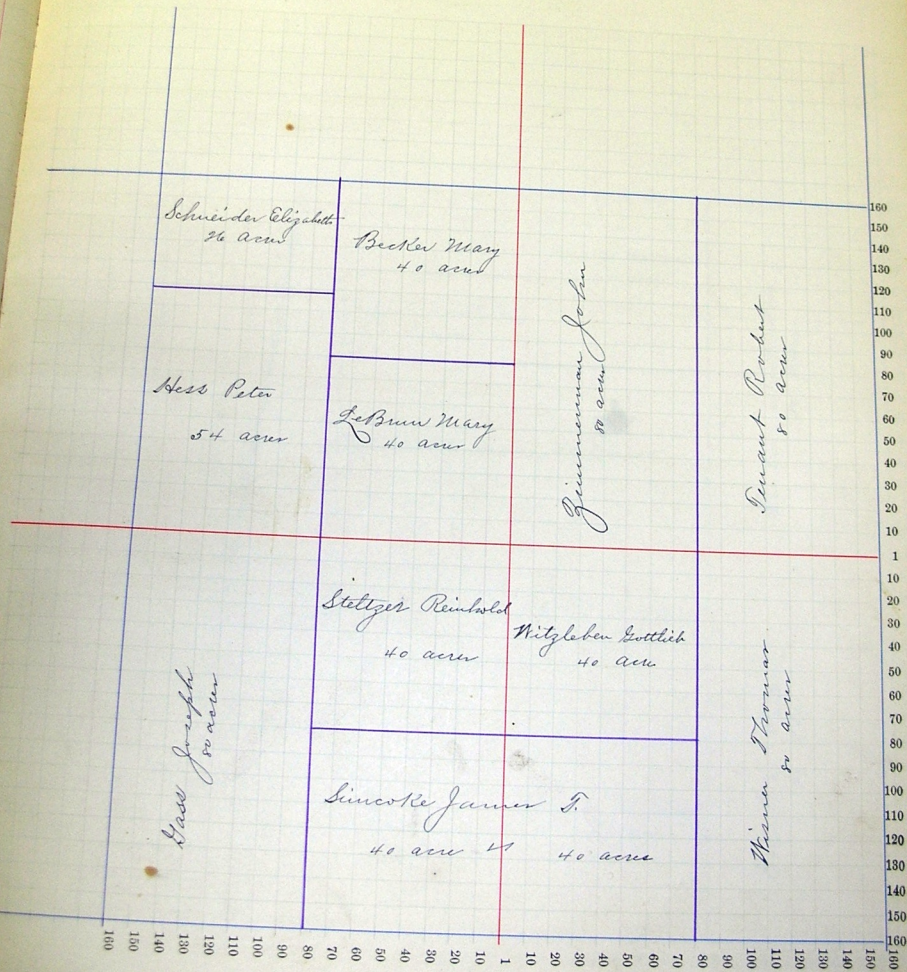


Section No. 21

Congressional Township No. 27, R. 14

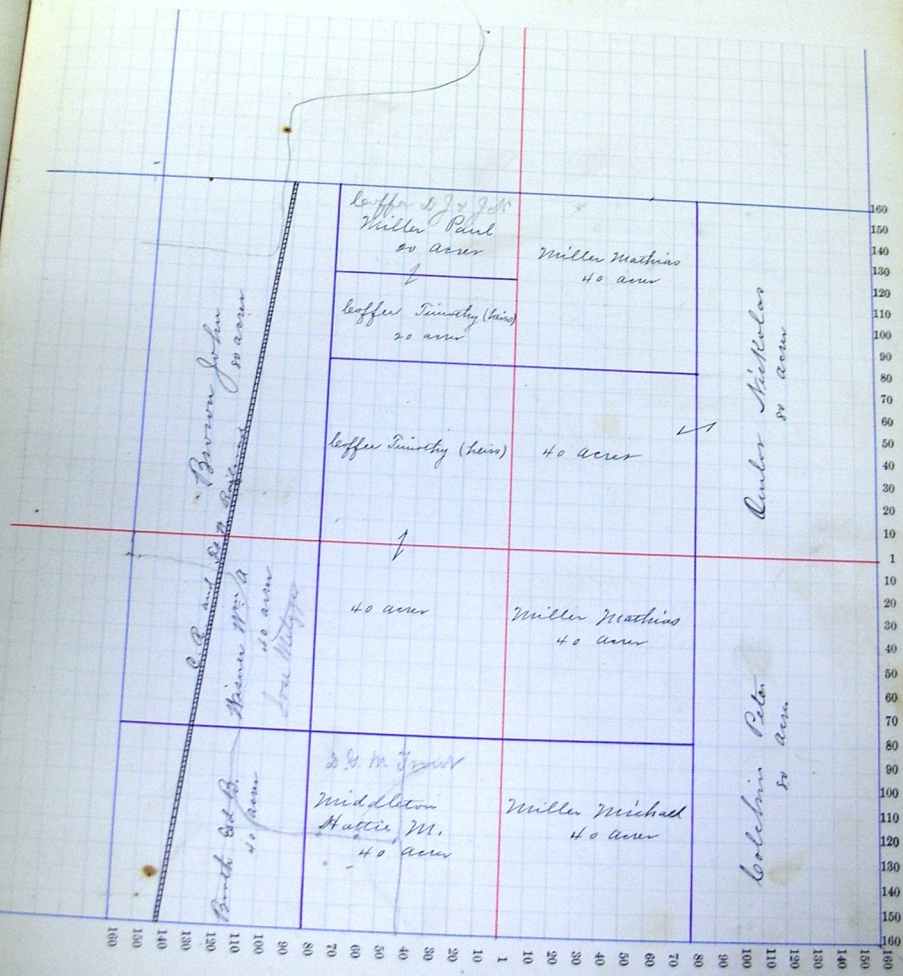
Scale—Forty rods to an inch, or ten rods to a space. Congress Land, which is one mile square for a section.
 Number of acres in this section, according to the United States Survey,



Section No. 22

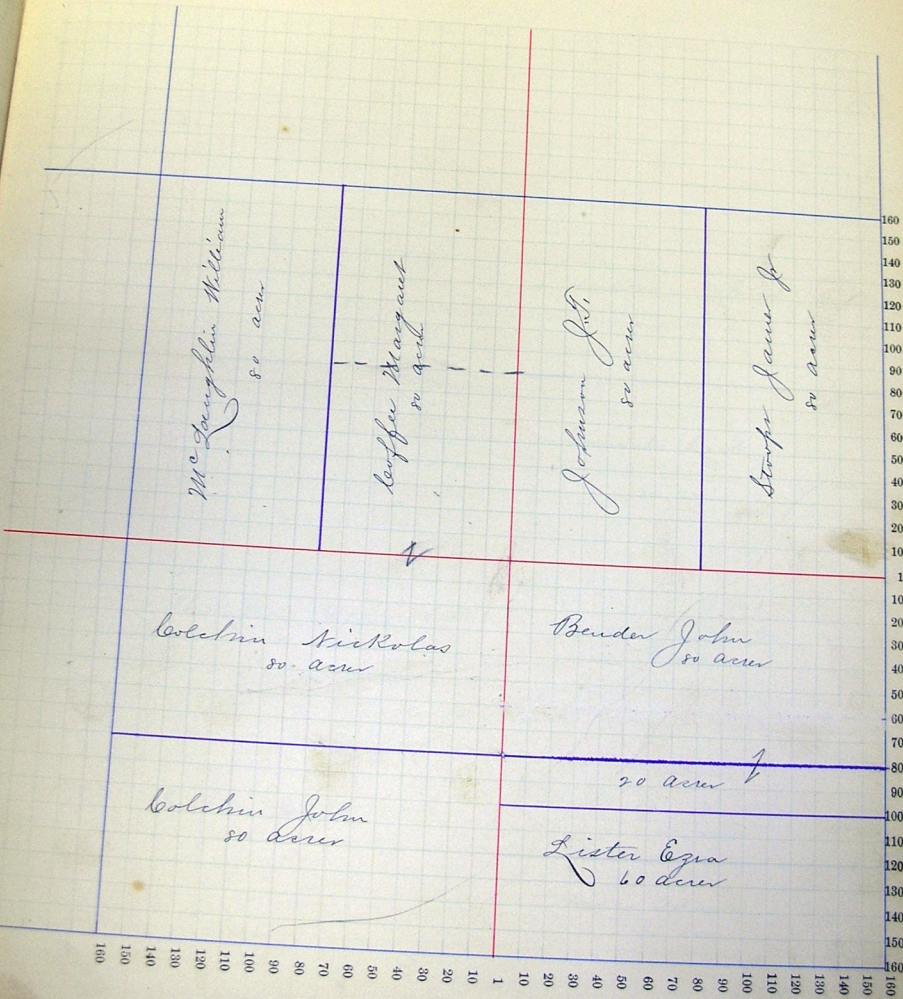
Congressional Township No. 27, R. 14

Scale—Forty rods to an inch, or ten rods to a space. Congress Land, which is one mile square for a section.
 Number of acres in this section, according to the United States Survey.



Congressional Township No. 27, R. 14

Scale—Forty rods to an inch, or ten rods to a space. Congress Land, which is one mile square for a section.
 Number of acres in this section, according to the United States Survey.



McCaughey William
80 acres

Luffer Margaret
80 acres

Johnson J. B.
80 acres

Strope James Jr.
80 acres

Cochran Nicholas
80 acres

Bender John
80 acres

Cochran John
80 acres

20 acres ↓

Lister Ezra
60 acres

160
150
140
130
120
110
100
90
80
70
60
50
40
30
20
10
1
10
20
30
40
50
60
70
80
90
100
110
120
130
140
150
160

Congressional Township No. 37, R. 14

Scale—Forty rods to an inch, or ten rods to a space, Congress Land, which is one mile square for a section.
Number of acres in this section, according to the United States Survey,

