

# COUNTY, INDIANA, 1903.

Township, No.

Assessor's Plat-Book for

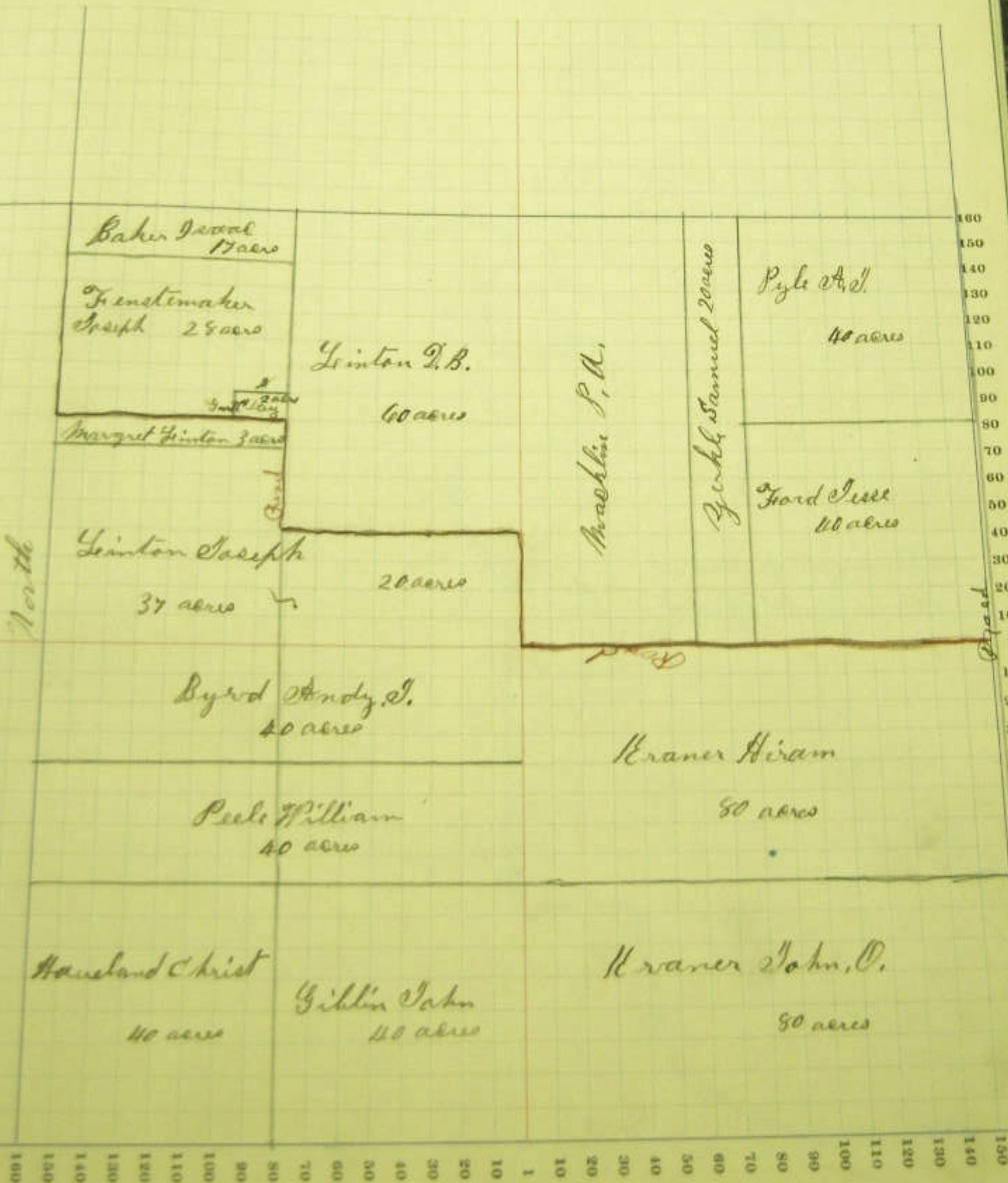
NAME OF OWNER.	Number of Plat.	DESCRIPTION.	Section.	Township.	Range.	Acres.	Homestead.	Value of Land.	Value of Improvements.
						33.2414			
Pyle A. C.		E $\frac{1}{2}$ S $\frac{1}{4}$ S $\frac{1}{2}$ $\frac{1}{4}$					40		
Ford Jessie		W $\frac{1}{2}$ S $\frac{1}{4}$ S $\frac{1}{2}$ $\frac{1}{4}$					40		
Hramer John O.		N $\frac{1}{2}$ S $\frac{1}{4}$ $\frac{1}{4}$					80		
Hramer Hiram		E $\frac{1}{2}$ S $\frac{1}{4}$ $\frac{1}{4}$					80		
Giblin John		S $\frac{1}{2}$ W $\frac{1}{2}$ S $\frac{1}{4}$ $\frac{1}{4}$					40		
Havelind Crist		N $\frac{1}{2}$ W $\frac{1}{2}$ S $\frac{1}{4}$ $\frac{1}{4}$					40		
Paul William W.		W $\frac{1}{2}$ E $\frac{1}{2}$ S $\frac{1}{4}$ $\frac{1}{4}$					40		
Byrd Andy, J.		E $\frac{1}{2}$ E $\frac{1}{2}$ S $\frac{1}{4}$ $\frac{1}{4}$					67		
Linton Joseph		pt NW $\frac{1}{2}$ NW					60		
Linton David		pt NE $\frac{1}{2}$ NW					3		
Brice Margant		pt NW $\frac{1}{2}$ NW					60		
Macklin Philip A.		A NW NE					20		
Zerkle Sam		pt NW $\frac{1}{2}$ NE					17		
Baker Isaac		pt E $\frac{1}{2}$ NW					2		
Clay Gertrude		pt E $\frac{1}{2}$ S $\frac{1}{4}$ NW					28		
Zunstermacher Joseph		pt E $\frac{1}{2}$ NW							



SECTION No. 33

Congressional Township No. . R.

SCALE—Forty rods to an inch, or ten rods to a space, Congress Land, which is one mile square for a section.  
 Number of acres in this Section, according to the United States Survey





# COUNTY, INDIANA, 1903,

Township, No.

Assessor's Plat-Book for

NAME OF OWNER	DESCRIPTION	ACRES	TAXES	RENTS
Barnes Eugene	Lot 12	27		
Baker Samuel A	Lot 12	20 10		
Beers Wm H. H.	Lot 1 2 3	40 30		
Brigg W. G.	Lot 12	130		
Trumbull Joseph	Lot 1	50		
Kramer John A	Lot 12	23		
Pyle W. J.	Lot 12	20		
Stanley Caroline	Lot 12	100 40		
Warren Constable	Lot 12	42		



SECTION No. 15

Congressional Township No. . R.

SCALE - Forty rods to an inch, or ten rods to a space, Congress Land, which is one mile square for a section.  
Number of acres in this Section, according to the United States Survey





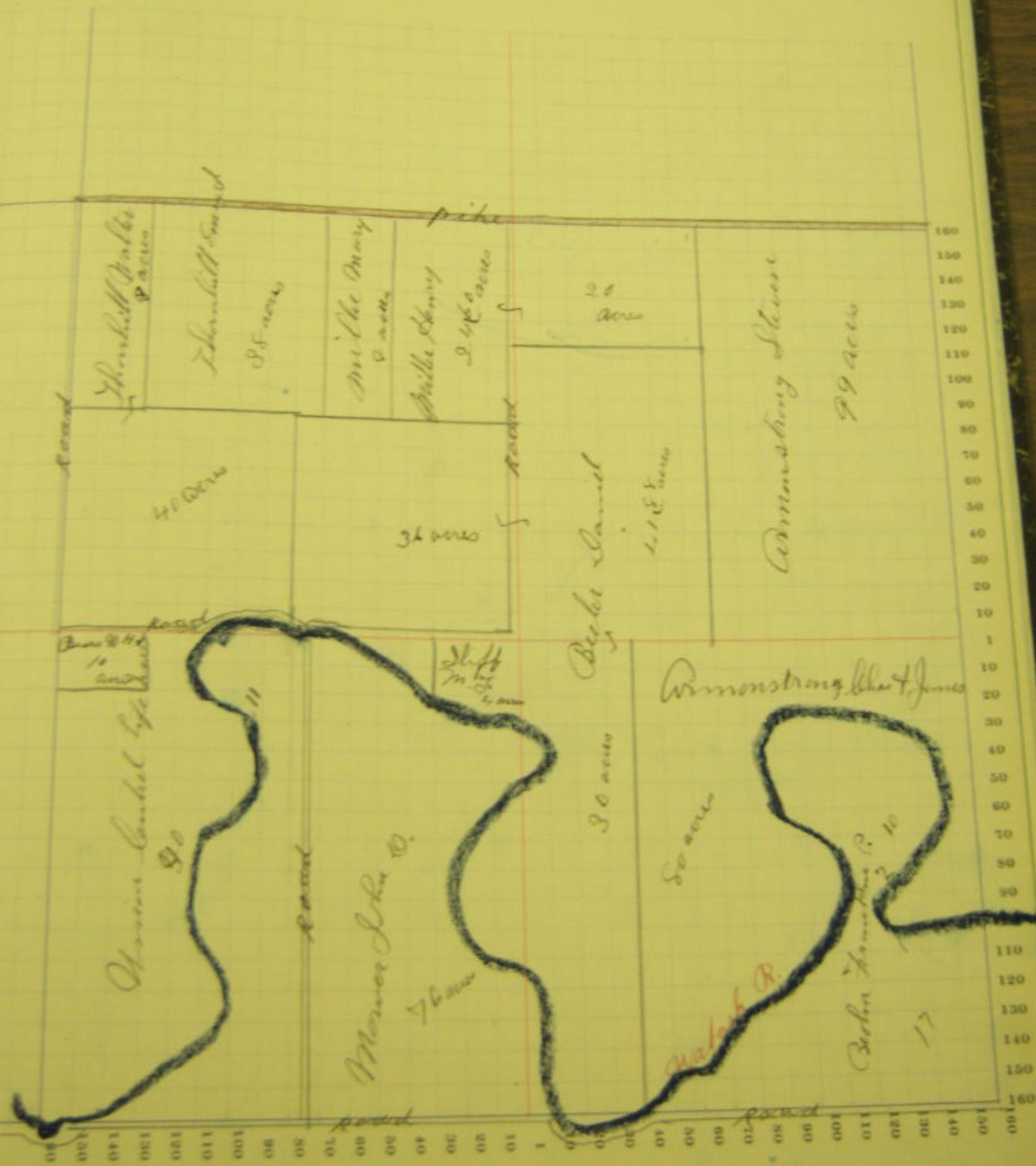
NAME OF OWNER	Number of Plats	DESCRIPTION	Section	Township	Range	Acres	Market Value	Assessed Value	Tax
Arrowsmithing Steven		E 1/2 NW 15				99			
Arrowsmithing Lehart & Jones		1/4 NW 1/4 Sec				80			
Becker Daniel & Rachel		1/4 NW 1/4 Sec				30			
"		1/4 NW 1/4 NW 15				41	85		
"		Lot 1-2 NW 1/4 NW 15				36			
Becker Franklin R		1/4 NW 1/4 NW 15				17			
"		1/4 NW 1/4 NW 15				10			
Bennett Wm H H		1/4 NW 1/4 NW 15				10			
Miller Henry		1/4 NW 1/4 NW 15				24	60		
"		1/4 NW 1/4 NW 15				20			
Miller Mary		1/4 NW 1/4 NW 15				9			
"		1/4 NW 1/4 NW 15				10			
Thornhill Walter		1/4 NW 1/4 NW 15				40			
"		1/4 NW 1/4 NW 15				9			
Thornhill Emma J		1/4 NW 1/4 NW 15				38			
Union Central Life Ins		Lot 4 NW 1/4 NW 15				51			
Sliff M J		1/4 NW 1/4 NW 15				6			
Mason John D		1/4 NW 1/4 NW 15				76			



SECTION No. 35-

Congressional Township No. . R.

SCALE—Forty rods to an inch, or ten rods to a space, Congress Land, which is one mile square for a section.  
Number of acres in this Section, according to the United States Survey





Assessor's Plat-Book for

Township, No.

NAMES OF OWNERS.	Number as Plat.	DESCRIPTION.	Section.	Township.	Range.	Acres.	Bounded by	Value of Land.	Value of Improvements.
			36	20	19				
Armstrong Geo & James W Jr		sw				54			
Butcher Geo W.		W $\frac{1}{2}$ W $\frac{1}{2}$ Se				36	23		
Butcher Martha etal		E $\frac{1}{2}$ W $\frac{1}{2}$ Se				36	23		
Daugherty Geo		W $\frac{1}{2}$ E $\frac{1}{2}$ Se				39	50		
Daugherty W. S.		E $\frac{1}{2}$ E $\frac{1}{2}$ Se				39	50		
Grace John W.		1/4 NW				35			
Grace S. L.		1/4 NW				94	36		
Lawrence Lively J.		1/4 E $\frac{1}{2}$ SW				84			
Rhodes Katie		1/4 E $\frac{1}{2}$ E $\frac{1}{2}$ NW				129			
Temple Sam A.		E $\frac{1}{2}$ NW				84	50		
White J & Pineria		1/4 E $\frac{1}{2}$ SW				18			



SECTION No. 36

Congressional Township No. . R.

SCALE—Forty rods to an inch, or ten rods to a space, Congress Land, which is one mile square for a section.  
Number of acres in this Section, according to the United States Survey

