

COUNTY, INDIANA, 1903.

Township, No.

Assessor's Plat-Book for

NAMES OF OWNERS.	Number on Plat.	DESCRIPTION.	Section.	Township.	Range.	Acres.	Hundredths.	Value of Land.	Value of Improvements.	Value of Crops and Depreciables.
			17	25	14					
Habegger Daniel C.		pt NW pt SW					141	77		
do		pt Lot-172					97			
do		pt W 1/2 SE					66			
Hoffstetter Christ		pt NE					159	56		
do		SE pt SE					56			
Hoffstetter George		pt SW					108	56		
do		pt SE					26			

SECTION No. 17

Congressional Township No. . R.

SCALE - Forty rods to an inch, or ten rods to a space, Congress Land, which is one mile square for a section.
Number of acres in this Section, according to the United States Survey



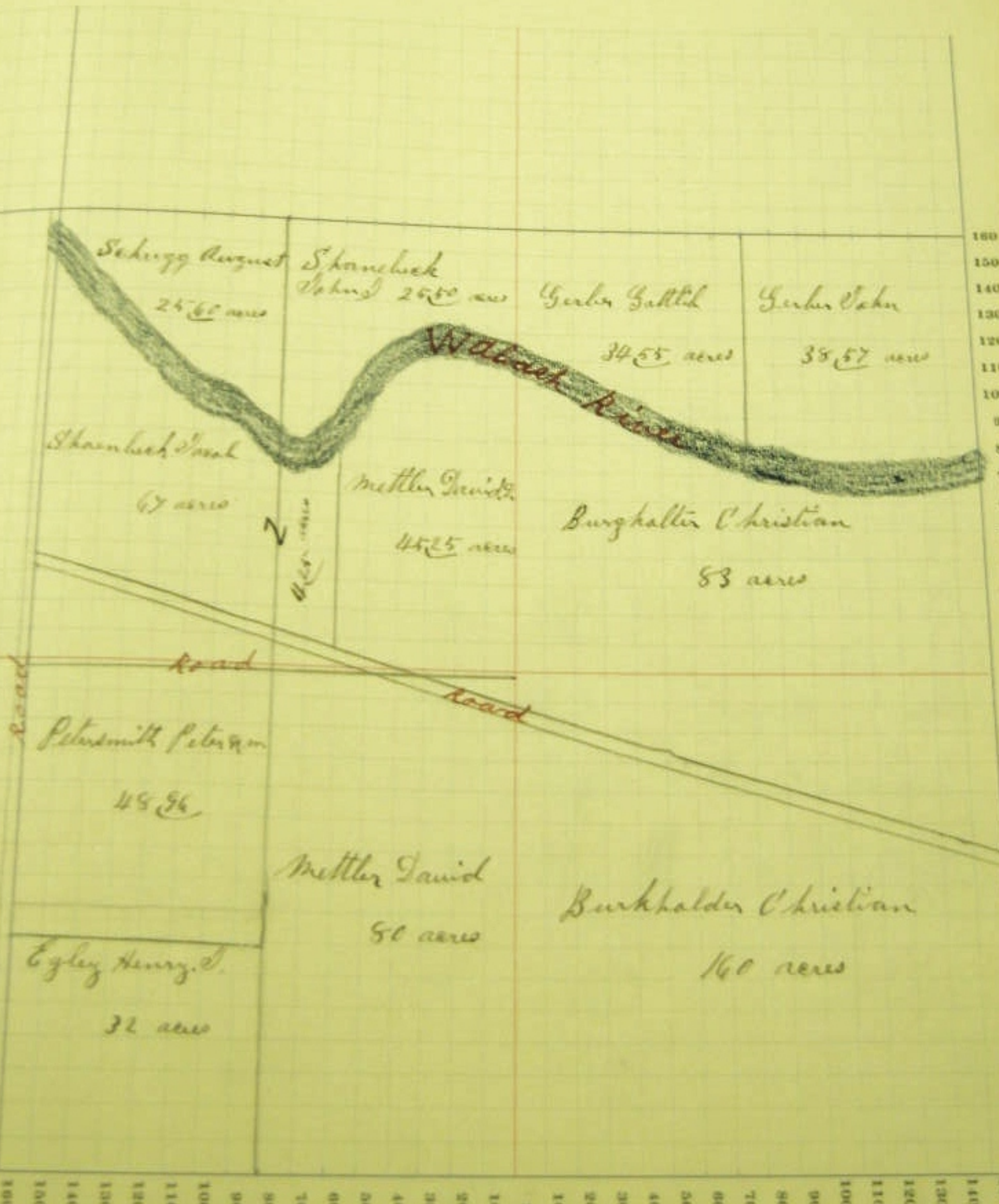
COUNTY, INDIANA, 1903.

Township, No.

Assessor's Plat-Book for

NAMES OF OWNERS.	Number of Plats.	DESCRIPTION.	Acres.			Value of Land.	Value of Improvements.	Total Value.
			1	100	1000			
Burkholder, Christ Do		3/4 Plat 445		160	83			
Egby, Henry, Jr.		pt lot 3		32				
Gerber, John		6 pt N 1/2		38 47				
Gerber, Gallip		W 1/2 S 1/2		34 44				
Mottler, David		E 1/2 S 1/2		80				
Mottler, David, D.		pt lot 4		44 28				
Petersmuth, Peter A. M.		N 1/2 S 1/2		48 84				
Schuback, Jacob		pt lot 3		67				
" " "		pt N 1/2 lot 4		4 25				
Schuyz, August		N 1/2 N 1/2		25 60				
Schuback, John, D.		6 pt N 1/2		24 60				

SCALE—Forty rods to an inch, or ten rods to a space. Congress Land, which is one mile square for a section.
Number of acres in this Section, according to the United States Survey



COUNTY, INDIANA, 1903.

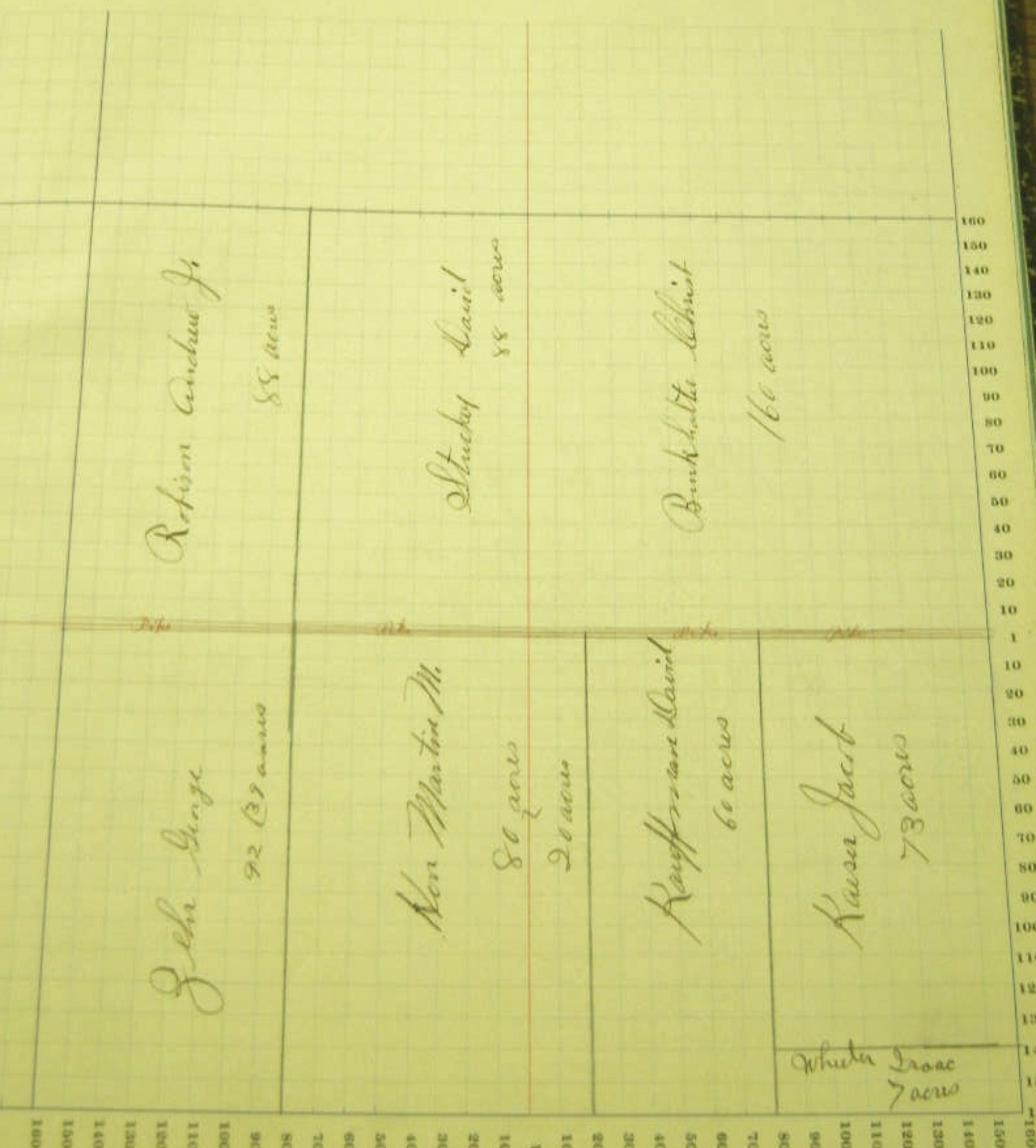
Assessor's Plat-Book for

Township, No.

NAMES OF OWNERS.	Number on Plat.	DESCRIPTION.	Section.	Township.	Range.	Acres.	Hundredths.	Value of Land.	Value of Improvements.	Total.
			7	25	4					
Berkhalter Christ		NE				160				
Alex Martin M.		E 1/2 SW				80				
do		SW 1/2 SE				20				
Kamm Jacob		SW E 2 SE				73				
Kauffman Lucie		SW 1/2 SE				60				
Robert W. J.		SW 1/2 NW				88				
Stucky David		E 1/2 NW				88				
Whale Isaac		SW E 1/2 SE				7				
Zehr George		SW SW				92	38			

Congressional Township No. , R.

SCALE - Forty rods to an inch, or ten rods to a space, Congress Land, which is one mile square for a section.
Number of acres in this Section, according to the United States Survey



COUNTY, INDIANA, 1903.

Assessor's Plat-Book for

Township, No.

NAMES OF OWNERS.	Number on Plat.	DESCRIPTION.	Section.	Township.	Range.	Acres.	Municipality.	Value of Land.	Value of Improvements.
			28	28	17				
Anderson Joseph		NW 1/4 E 2 S 2				5			
Burghalter Christ		N 1/4 NW 1/4 NW 1/4 SW 1/4 NW 1/4				22 80			
Brand John		E 1/2 NE				75			
Hale J. H.		SW				160			
Harrison Mary		N 1/4 S 2				15			
Kneass Eugene		N 1/4 NE				60			
Kneass Eugene		E 1/4 E 2 NW				67	50		
Kelley Geo. H.		N 1/4 E 1/2 S 2				6	29		
Schugg Adolph		W 1/2 S 2				80			
Snow J. J.		N 1/4 E 2 S 2				42			

SCALE—Forty rods to an inch, or ten rods to a space, Congress Land, which is one mile square for a section.
Number of acres in this section, according to the United States Survey

