

# COUNTY, INDIANA, 1903.

Assessor's Plat-Book for

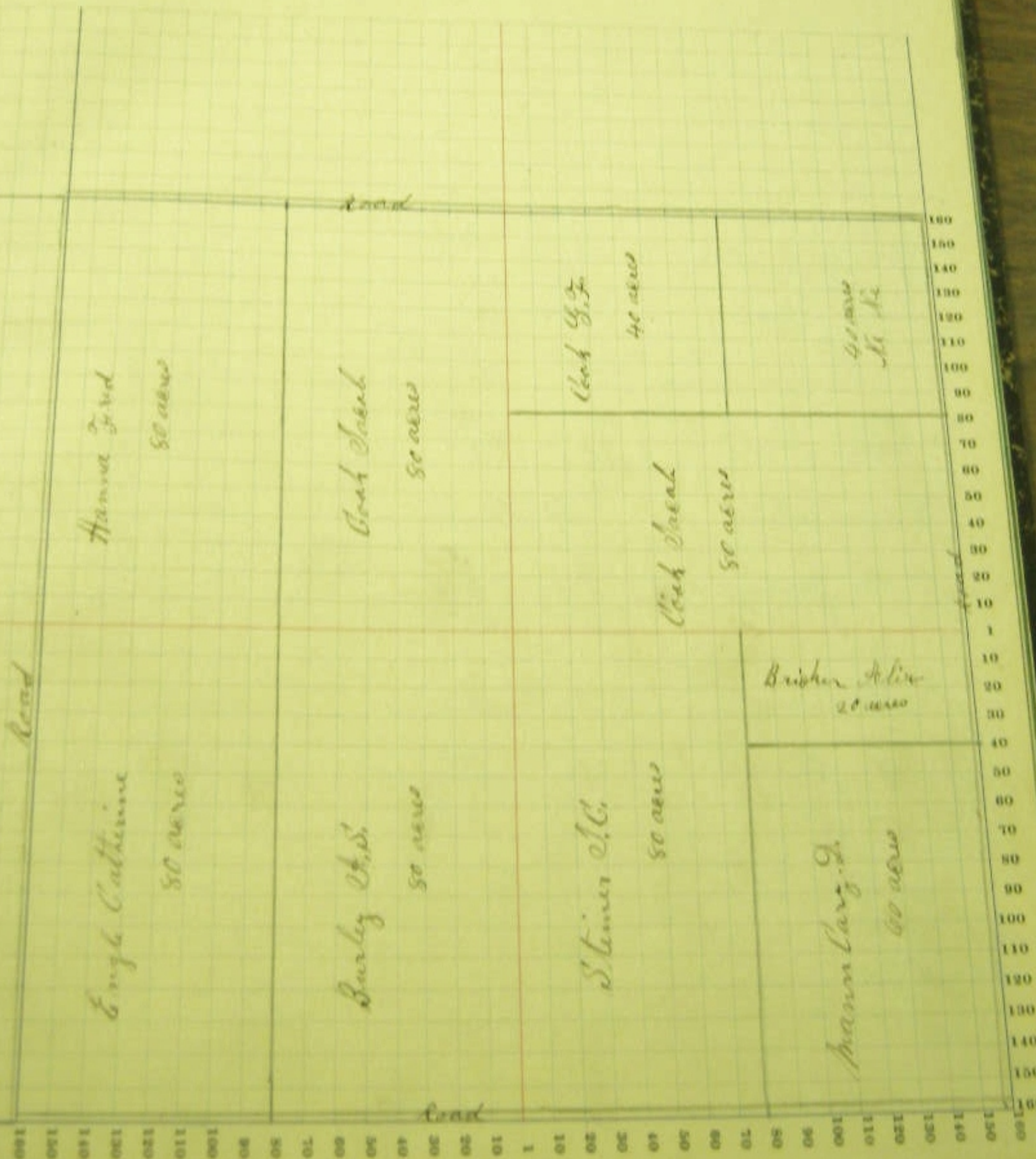
Township, No.

NAMES OF OWNERS.	Number on Plat.	DESCRIPTION.	Section.	Township.	Range.	Acres.	Hundredths.	Value of Land.	Value of Improvements.	Total Value.
Burley A. S.		E 1/2 NW 20				80				
Brisken A. L.		N 1/2 E 20				20				
Cook Jacob		S 1/2 E 20				80				
Cook Jacob		E 1/2 NW 20				80				
Cook George, Jr.		NW 20				40				
Engle Catherine		N 1/2 SW 20				80				
Hann Cary, D.		Ept 2, E.				60				
Stinner J. C.		N 1/2 E 20				80				
Hannah Fred		N 1/2 NW 20				80				
		N 1/2 E 20				40				

SECTION No. 13

Congressional Township No. . R.

SCALE—Forty rods to an inch, or ten rods to a space, Congress Land, which is one mile square for a section.  
Number of acres in this Section, according to the United States Survey



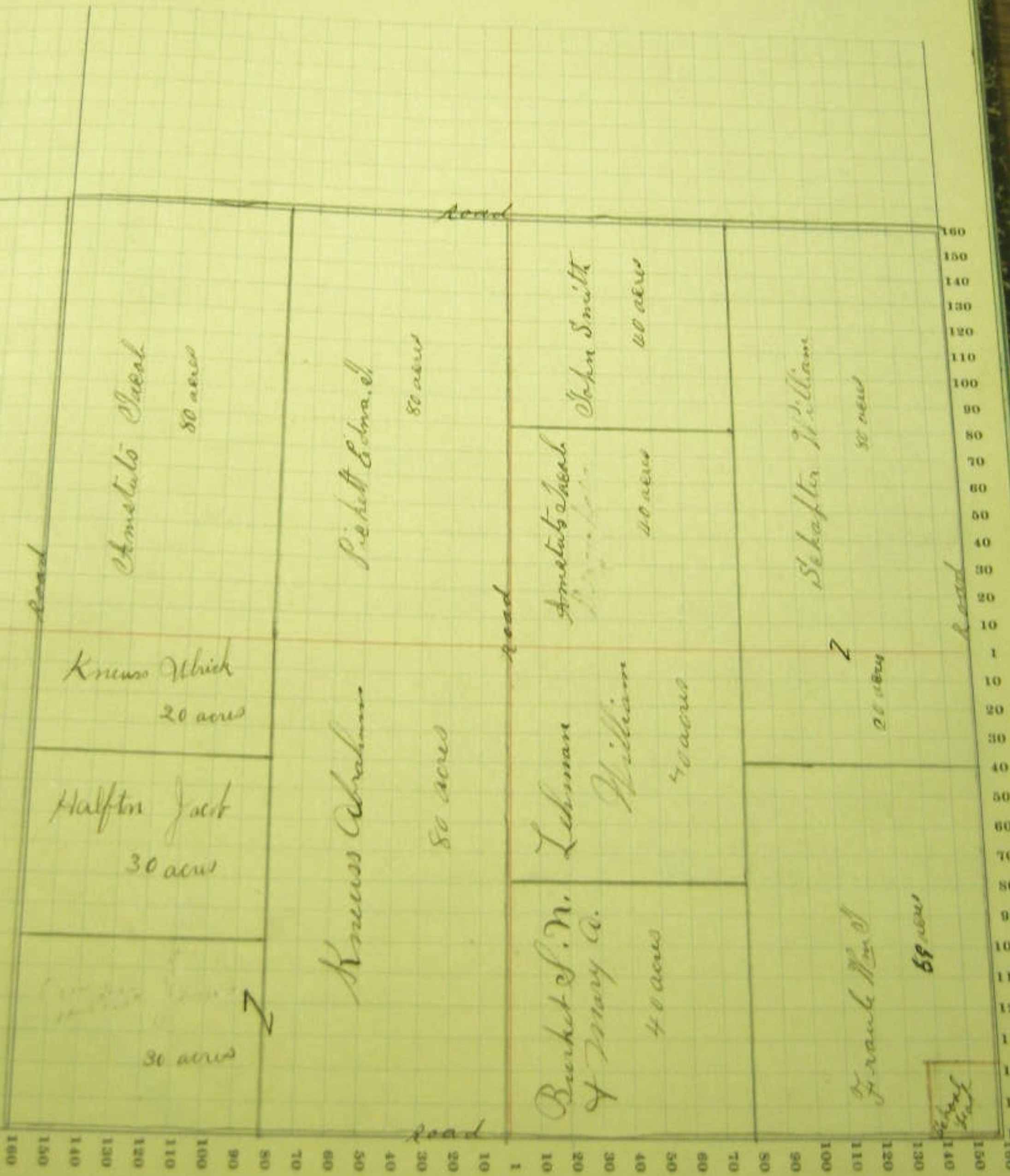
Assessor's Plat-Book for

NAMES OF OWNERS.	Number on Plat.	DESCRIPTION.	Section.	Township.	Range.	Acres.	Homestead.	Value of Land.	Value of Improvements.	Total Value.
			14	25	19					
Amstutz Jacob		W $\frac{1}{2}$ NW				80				
Amstutz Jacob		SW SE				40				
Beyer Rosa		<del>SW SE</del>				<del>40</del>				
Burket S. T. & Mary, co.		SW SE				40				
Halpern Jacob		pt SW				30				
Kenesch Ulrich		pt N $\frac{1}{2}$ SW				20				
Kenesch Abraham		E $\frac{1}{2}$ SW				80				
" "		Spt N $\frac{1}{2}$ SW				30				
Smith John		NW NE				40				
Schaffter Wm		E $\frac{1}{2}$ NE				80				
" "		pt SE				20				
Frank R. J.		pt E $\frac{1}{2}$ SE				59				

# SECTION No.

Congressional Township No. 14 R.

SCALE - Forty rods to an inch, or ten rods to a space, Congress Land, which is one mile square for a section.  
 Number of acres in this Section, according to the United States Survey



NAMES OF OWNERS	DESCRIPTION	1	2	3	4	5	6
		21	24	29			
Amstutz Jacob	W W			40			
Mendrick David	Sw of NW			1			
Jacobs	W 1/2 Sw			60			
"	SE cor SW			10			
Kramer Jacob	SE NE			40			
"	NE SE			40			
Long David	W Sw			80			
Munshaus Isaac	SE NW			80			
Ross Lafayette	W 1/2 SE			80			
Smith Sarah	W 1/2 NW			40			
Taylor Simon	W 1/2 NE			80			
Wason Charlotte	W 1/2 SE			40			
"	SW cor SE			3			

SECTION No. 15

Congressional Township No. 25 R. 14

SCALE—Forty rods to an inch, or ten rods to a space, Congress Land, which is one mile square for a section.  
Number of acres in this Section, according to the United States Survey



# COUNTY, INDIANA, 1903.

Township, No.

Assessor's Plat-Book for

NAMES OF OWNERS	Number on Plat.	DESCRIPTION.	Section.	Township.	Range.	Acres.	Hundredths.	Value of Land.	Value of Improvements.	Value of Land and Improvements.
			11	25	19					
Brown John		Supr Sw				65				
Brown John & Lilla		Supr Se				12				
Bailey Daniel		Supr Sw				32				
Dennis Hull Wm Sergeant Blansky M.		1/2 Sw NW				20				
Hoffsteter C.							83			
Yang Francis		1/2				160				
" "		1/4 NW				35	30			
Yang William		E 1/4 NW				26	50			
Yang David		1/4 Se				115	15			
" "		1/4 N 2 NW				19	73			
" " " " " " " " " " " "		1/4 Se NW				40				
Wheeler S. A.		1/4 Sw				69	17			
" "		1/4 N 2 NW				18	20			

SECTION No. 16

Congressional Township No. . R.

SCALE—Forty rods to an inch, or ten rods to a space, Congress Land, which is one mile square for a section.  
 Number of acres in this Section, according to the United States Survey

