

Adams

COUNTY, INDIANA, 1903.

Assessor's Plat-Book for

Nabask

Township, No.

NAMES OF OWNERS.	Number on Plat.	DESCRIPTION.	Section.	Township.	Range.	Acres.	Hundredths.	Value of Land.	Value of Improvements.	Value of Land and Improvements.
Abner Jacob		N/2 NW	1	25	1/4	80				
Amelia Jacob U		S/2 NW	1			80				
Baumgartner Ephraim		mid pt SW	1			50				
Baker Rachel		SE NW	1			40				
Carlow William		W pt SW	1			50				
Carlow Effie May		SW NW	1			40				
Case Robert B.		N/2 SE	1			80				
Carter Calvin		E/2 SE	1			79				
Thomas John C		E pt SW	1			60				
Carter Samuel		E/2 NW NW	1			40				
Carter J. M. & Lydia G.		pt NW NW	1			19	4			
Kieby Samuel		pt NW NW	1			19	4			

SECTION No. 7

Congressional Township No. . R.

SCALE—Forty rods to an inch, or ten rods to a space, Congress Land, which is one mile square for a section.
Number of acres in this Section, according to the United States Survey 640



Adams

COUNTY, INDIANA, 1903.

Assessor's Plat-Book for Nabask

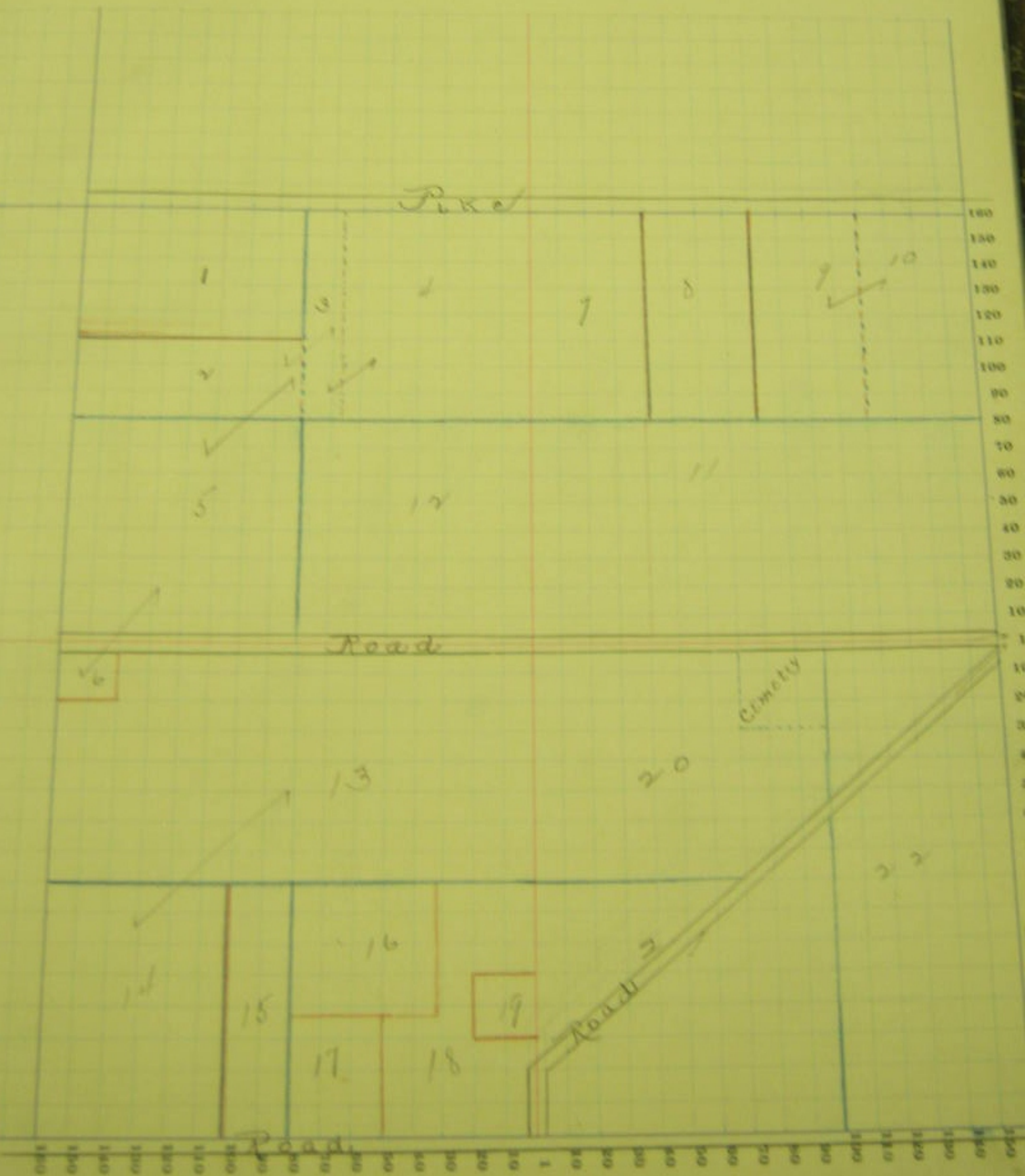
Township, No.

NAMES OF OWNERS.	Number on Plat.	DESCRIPTION.	Section.	Township.	Range.	Acres.	Hundredths.	Value of Land.	Value of Improvements.	Value of Land and Improvements.
Hummiller Peter	17	ft. n/2 se sw	2	25N		8				
Bicnie Christian	18	ft. se sw	2			16				
Bryant Paul	19	ft. se sw	2			4				
Baumgartner David	16	nw. cor. se sw	2			12				
Egley Jacob	7	1/2 n/2 n/2 ne	2			20				
Fisher William	22	Ept. se	2			60				
Stewart William	13	1/2 se	2			80				
do	14	n/2 ft. sw sw	2			30				
Graff Susannah	5	sw nw	2			40				
do	6	1/2 n/2 sw	2			1 50				
do	2	ft. n/2 nw	2			22				
do	3	ft. n/2 n/2 nw	2			3 43				
do	4	ft. ne nw	2			24 57				
Gilliom Peter	1	ft. n/2 n/2 nw	2			22 80				
Luginbill Harriet	15	mid ft. sw sw	2			10				
Pawley Emma et al	21	ft. se	2			60				
Swartzmauber Adam	12	se nw	2			40				
Swartz Jacob B.	20	nw se	2			40				
Tuter David W.	9	ft. n/2 n/2 ne	2			18 80				
do	10	ft. n/2 ne	2			18 80				
Tuter Calvin	7	ft. n/2 ne	2			17 6				

SECTION No. 2

Congressional Township No. . R.

SCALE—Forty rods to an inch, or ten rods to a space, Congress Land, which is one mile square for a section.
Number of acres in this Section, according to the United States Survey 640



COUNTY, INDIANA, 1903.

Assessor's Plat-Book for

Township, No.

NAME OF OWNER	DESCRIPTION				
Chambers B. M.	W 1/2 Sec	77			
Gallien Peter	1/4 1/2 1/4 1/4	25			
Huttyge Jacob	E 1/2 Sec	90			
" "	1/4 Sec	22			
Huttyge Peter E.	1/4 1/4 Sec	30 20			
Smith Martin L.	2 1/4 Sec	109			
Smith Barclay	1/2 1/2 E 1/2 1/4	60			
	1/4 1/4	30			
Stucky David	E 1/2 1/4	76			
	1/4 1/4				
Wilson Chas W.	W 1/2 1/4	80			
" "	E 1/2 1/4	44			

SECTION No. 3

Congressional Township No. , R.

SCALE - Forty rods to an inch, or ten rods to a space, Congress Land, which is one mile square for a section.
Number of acres in this Section, according to the United States Survey 636.25



COUNTY, INDIANA, 1903.

Assessor's Plat-Book for

Debauch

Township, No.

NAMES OF OWNERS.	Number in Plat.	DESCRIPTION.	Acres	Value of Land.	Value of Improvements.	Value of Land and Improvements.
Fisher Emil	13	recorrupt Sw	4 25/4	3		
Lehman Isaac	11	1/2 Sw cor Sw	1	14 75		
Do	12	ft 1/2 Sw	4	37 20		
Mauer John	10	ft 1/2 Sw	4	14 75		
Neuschwander D.C.	5	Sw Sw	4	40		
Do	2	Eft. ne	4	50		
Do	1	und. ft ne	4	38 20		
Neuschwander Gust A.	3	ft 1/2 1/2 Sw Sw	4	25		
Do	4	ft Sw	4	11 20		
Superior Lumber Co.	8	Sw Sw	4	40		
Fischer Samuel	6	Sw Sw	4	40		
Do	7	Sw Sw	4	40		
Do	4	1/2 ft 1/2 Sw Sw	4	15		

SECTION No. 4

Congressional Township No. , R.

SCALE—Forty rods to an inch, or ten rods to a space, Congress Land, which is one mile square for a section.
Number of acres in this Section, according to the United States Survey.

