

COUNTY, INDIANA, 1907.

Assessor's Plat-Book for

Township, No.

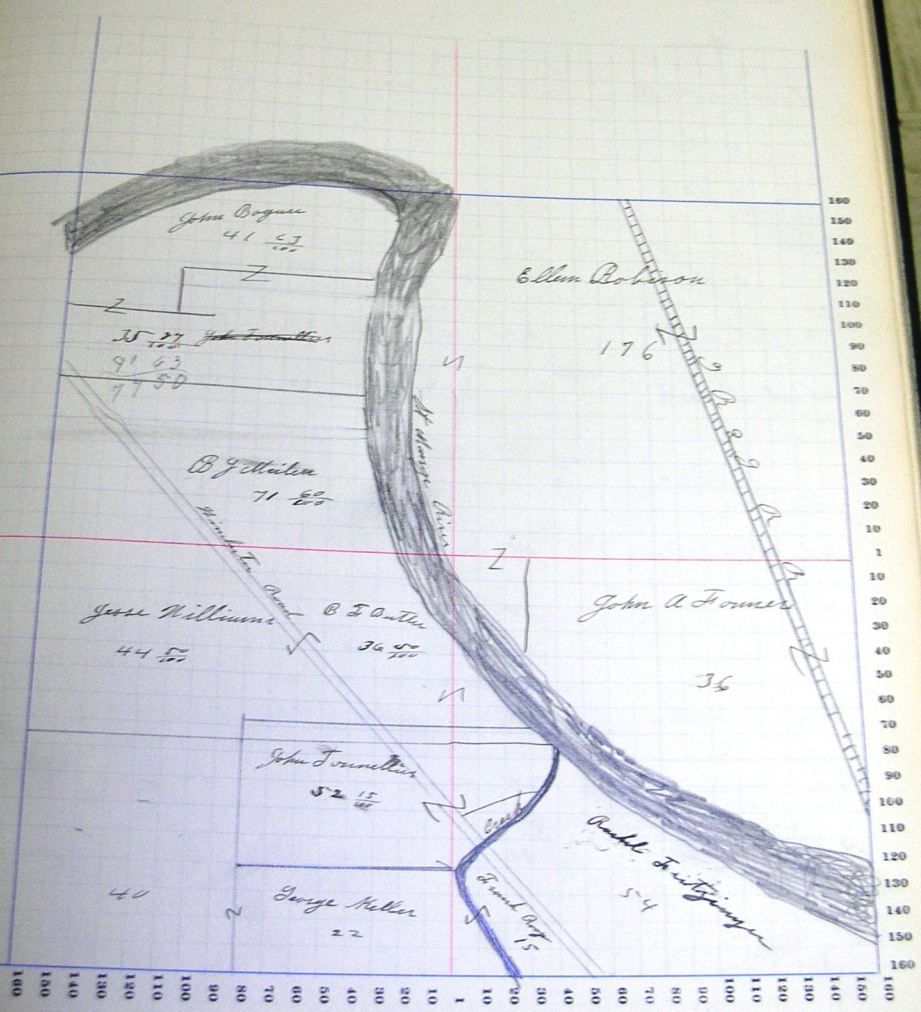
SP. & DISPER. PLAT-BOOK #75, DISTRICT 12

NAMES OF OWNERS.	Number on Plat.	DESCRIPTION.	Section.	Township.	Range.	Acres.	Hundredths.	Value of Land.	Value of Improve-ments.	Value of Land and Improve-ments.
Ellen Robinson		sw 1/4	28			176				
John A. Fomer		se 1/4	28			36				
John Bogner		pt nw pt	28			41	60			
oo		pt nw	28			35	87			
B. J. Meibers		pt s 1/2 nw	28			71	60			
Jose Williams		npt sw	28			44	50			
B. F. Butler		npt sw	28			76	50			
George Keller		sw sw	28			40				
oo		pt sw	28			22				
Frank Poop		sw 1/4 sw	28			15				
Rachel Fritzinger		2 pt se	28			54				

SECTION No. 28

Congressional Township No. 28, R. 14

SCALE—Forty rods to an inch, or ten rods to a space, Congress Land, which is one mile square for a section.
Number of acres in this section, according to the United States Survey, 573 $\frac{4}{100}$



COUNTY, INDIANA, 1907.

Assessor's Plat-Book for

Township, No. _____

OFF. P. SURVEY, STATE, INDY., 1907, 200/100/100

NAMES OF OWNERS.	Number or Part.	DESCRIPTION.	Section.	Township.	Range.	Acres.	Hundredths.	Value of Land.	Value of Improvements.	Value of Land and Improvements.
John Boyner		pt ne	29			76				
John Evans		opt sw ne	29			10				
Emory Challenge		sw	29			160				
—										
Wm Singleton		w 1/2 se ne	29			20				
—		s 1/2 sw ne	29			20				
—		s mid pt sw ne	29			10				
B. J. Keibler		1/2 se ne	29			20				
South Sheets		sw	29			159.50				
John Fournellier		pt w 1/2 se	29			26.66				
		pt n 1/2 ne se	29			6.66				
		pt w 1/2 se	29			57.74				
		pt n 1/2 ne se	29			15.74				
Jesse Williams		pt ne se	29			4				
Elise Roop		pt ne se	29			16				
George Keller		se se	29			40				

Assessor's Plat-Book for

Township, No.

PR. B. HURDEN, EAST BOW, N. O., DISTRICT CLERK

NAMES OF OWNERS.	Number on Plat.	DESCRIPTION.	Section.	Township.	Range.	Acres.	Hundredths.	Value of Land.	Value of Improvements.	Value of Land and Improvements.
Coat Cook		n 1/2 ne ne	30			20				
o o		apt e 1/2 ne	30			61				
Joseph B Mann		nw ne	30			40				
o o		pt ne	30			24				
B F Butler		e 1/2 nw	30			80				
o o		w pt sw ne	30			15				
Henry Selking		w 1/2 nw	30			90	76			
Christian Selking		w 1/2 sw	30			89				
Fred Schueller		ne sw	30			40				
o o		se sw	30			40				
Jesse Butler		ne se	30			40				
Honace Butler		sw se	30			40				
Albert & Delilah Butler		ne se	30			40				
Coak Sheets		se se	30			40				

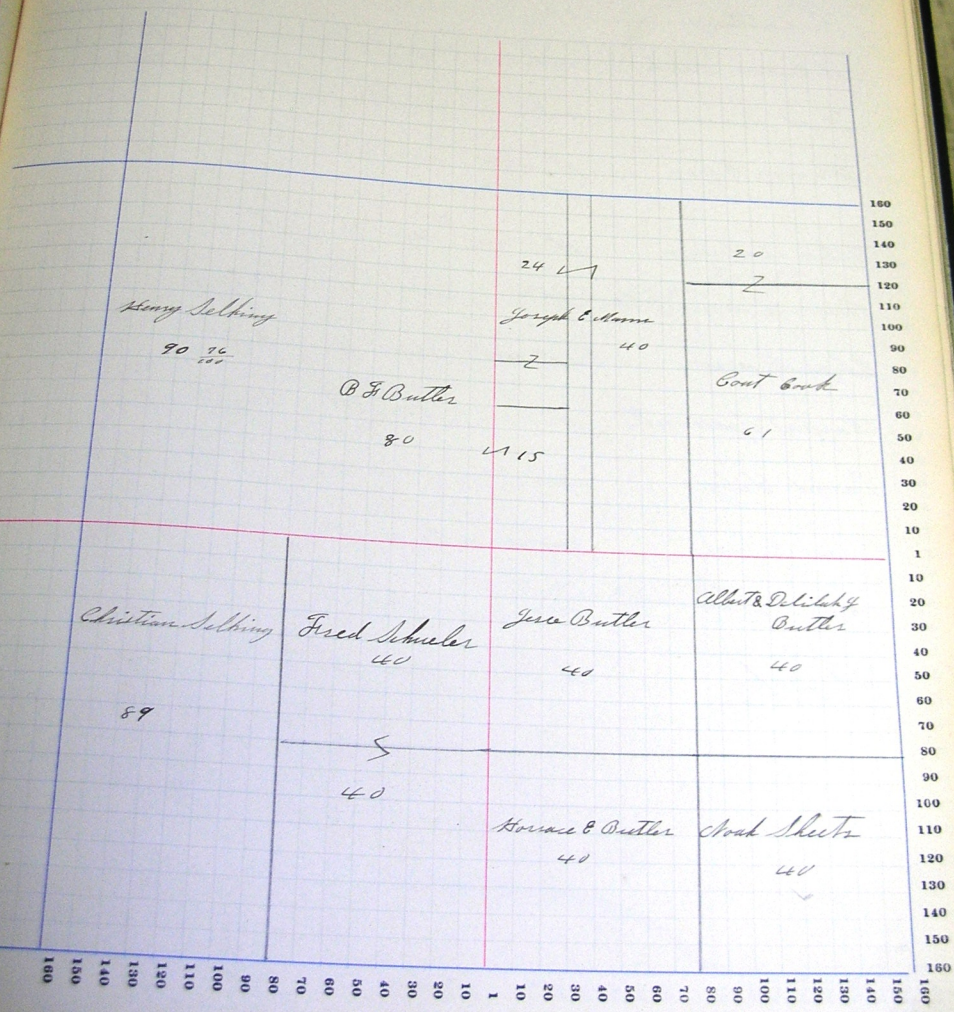
SECTION No. 30

Congressional Township No. 28, R. 14

SCALE—Forty rods to an inch, or ten rods to a space, Congress Land, which is one mile square for a section.
Number of acres in this section, according to the United States Survey, 659 ⁷⁵/₁₀₀

Value of
Improvements

Value of
Lands and
Improvements



160
150
140
130
120
110
100
90
80
70
60
50
40
30
20
10
1
160
150
140
130
120
110
100
90
80
70
60
50
40
30
20
10
1

Assessor's Plat-Book for

Township, No.

No. 2. Survey, Sec. 36, P. 27, 28, 29, 30, 31, 32, 33, 34, 35, 36

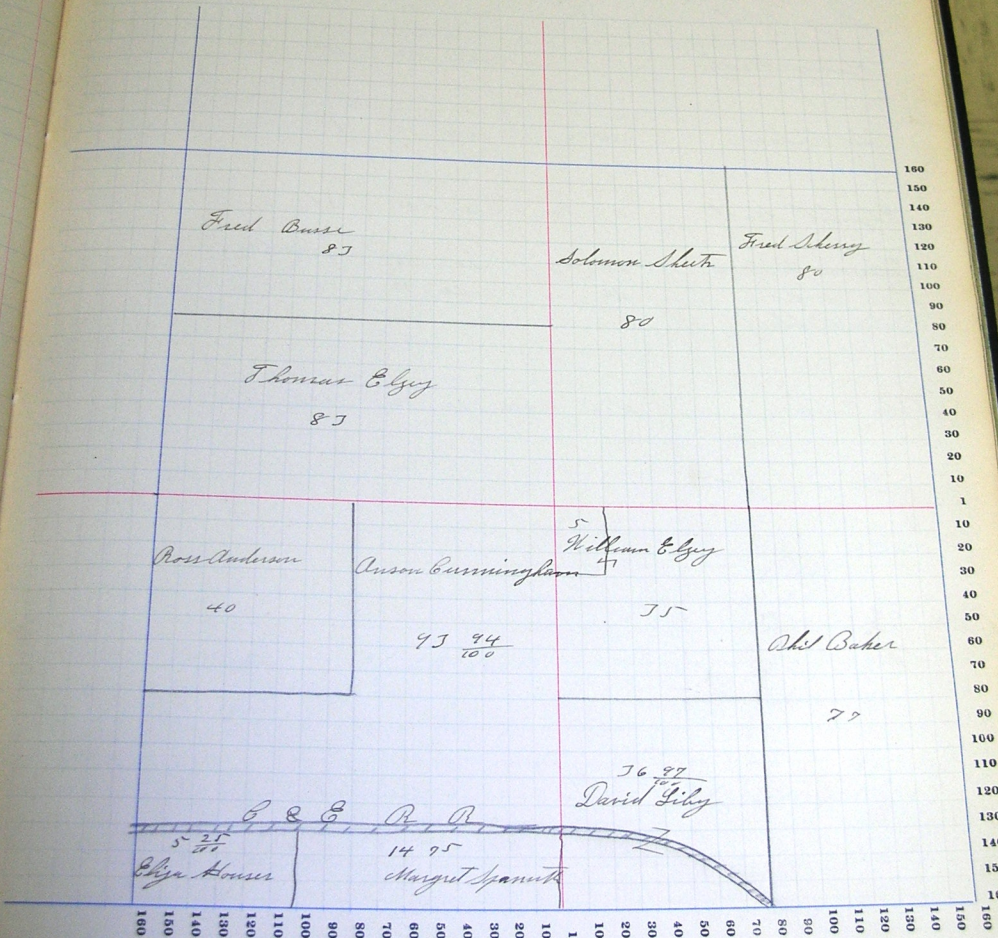
NAMES OF OWNERS.	Number of Plat.	DESCRIPTION.	Secion.	Township Range.	Acres.	Hearthth.	Value of Land.	Value of Improve-ments.	Value of Plat. and Plat. Fee.
Fred Adery		E 1/2	31	31	80				
Solomon Shetr		W 1/2	31	31	80				
Fred Bruce		N 1/2	31	31	83				
Thomas E. Eby		pt S 1/2	31	31	27 66				
_____		pt S 1/2	31	31	55 34				
J. O. Anderson		pt NW	31	31	40				
Amos Cunningham		pt NW	31	31	93 94				
Eliza Houser		spt SW 1/2	31	31	5 25				
Margret Spammuth		pt SW	31	31	14 95				
David Liby		SW	31	31	36 97				
William E. Eby		NW cor SW 1/2	31	31	5				
_____		NW	31	31	35				
Phil Baker		E 1/2	31	31	77				

SECTION No. 31

Congressional Township No. 28, R. 14

SCALE—Forty rods to an inch, or ten rods to a space, Congress Land, which is one mile square for a section. Number of acres in this section, according to the United States Survey, 633 ⁷⁶/₁₀₀

Value of Improvements
Value of Lands and Improvements



160
150
140
130
120
110
100
90
80
70
60
50
40
30
20
10
1
10
20
30
40
50
60
70
80
90
100
110
120
130
140
150
160

COUNTY, INDIANA, 1907.

Assessor's Plat-Book for

Township, No.

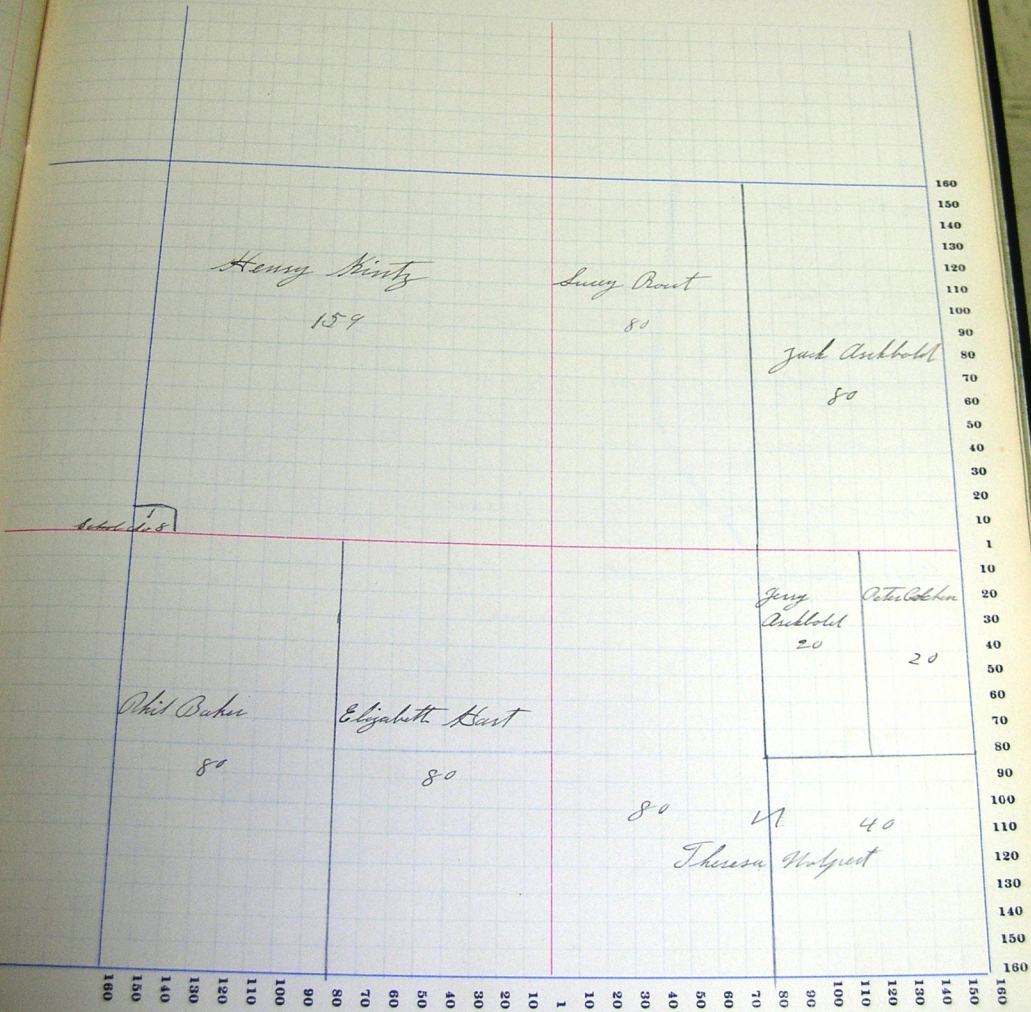
NAMES OF OWNERS.	Number of Plots.	DESCRIPTION.	Section.	Township.	Range.	Acres.	Municipality.	Value of Land.	Value of Improvements.	Value of Total and Improvements.
Jack Arkhald	2 1/2	ne	32			80				
Lucy Brant	10 1/2	ne	32			80				
Henry Ninty		ne	32			159				
Chil Baker	10 1/2	sw	32			80				
Elizabeth Hart	2 1/2	sw	32			80				
Theresa Wolpert	10 1/2	se	32			80				
O C	se	se	32			40				
Young Arkhald										
Peter Calchon	2 1/2	ne	32			20				

SECTION No. 12

Congressional Township No. 28, R. 14

SCALE—Forty rods to an inch, or ten rods to a space, Congress Land, which is one mile square for a section.
Number of acres in this section, according to the United States Survey, 677

Value of
lands and
improvements



Assessor's Plat-Book for

Township, No.

NAMES OF OWNERS.	Number of Pts.	DESCRIPTION.	Section.	Township Range.	Acres.	Hundredths.	Value of Lands.	Value of Improvements.	Value of Lands and Improvements
Rachel Fritzinger	e 1/2	nw	33		79				
J S Goodale			33		32	50			
Frank Roof	pt e 1/2	nw	33		36				
do	pt w 1/2	ne	33						
do	pt e 1/2	nw	33		69				
Kathie Roof	pt w 1/2	ne	33						
do	pt e 1/2	nw	33		25				
Peter Colben	nw	sw	33		40				
do	sw	nw	33		40				
Catherine Schlafer	nw	nw	33		40				
John Schurger	sw	sw	33		40				
Franis McK Campbell	ne	sw	33		40				
Mary E. Hanna	pt	se	33		120				

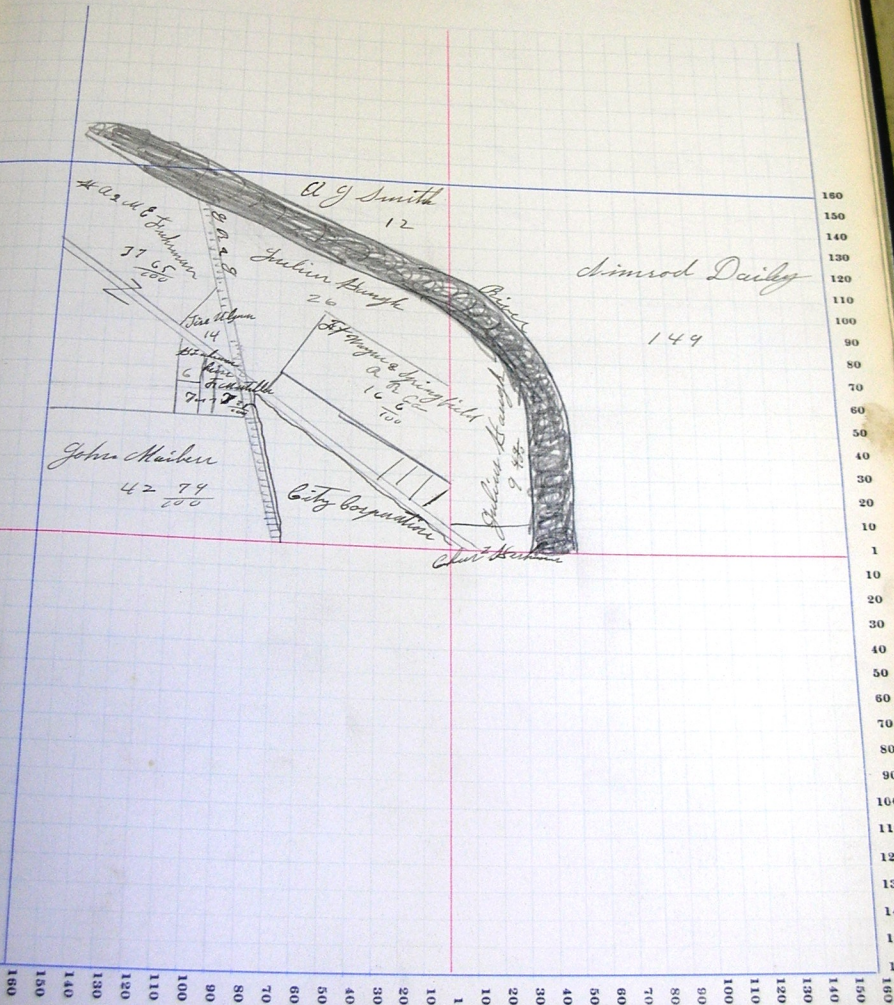
SECTION No. 34

Congressional Township No. 28, R. 14

SCALE—Forty rods to an inch, or ten rods to a space, Congress Land, which is one mile square for a section.
Number of acres in this section, according to the United States Survey, 337 ³⁴/₁₀₀

Value of
Improvements.

Value of
Builds and
Improvements.



180
150
140
130
120
110
100
90
80
70
60
50
40
30
20
10
1
10
20
30
40
50
60
70
80
90
100
110
120
130
140
150
160
170
180

COUNTY, INDIANA, 1907.

Assessor's Plat-Book for

Township, No.

W. B. SWIFT'S PLAT-BOOK, No. 2, INDIANAPOLIS

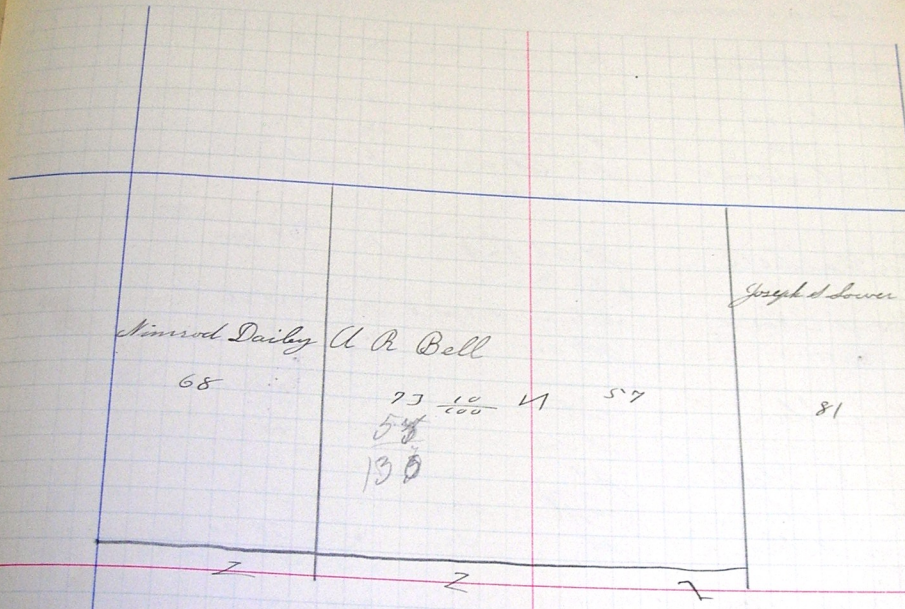
NAMES OF OWNERS.	Number on Plat.	DESCRIPTION.	Section.	Township.	Range.	Acres.	Hundredths.	Value of Land.	Value of Improvements.	Value of Lots and Improvements.
Joseph S. Lower		pt e 4/2 ne	35			62 16				
o o		pt w 4/2 ne	35			13 85				
o o		pt e 4/2 nw	35			5				
A. R. Bell		# w 4/2 ne	35			59				
o o		pt e 4/2 nw	35			73 10				
Amos Dailley		pt w 4/2 nw	35			68				

SECTION No. 35

Congressional Township No. 28, R. 14

SCALE - Forty rods to an inch, or ten rods to a space, Congress Land, which is one mile square for a section.
Number of acres in this section, according to the United States Survey, $279 \frac{10}{100}$

Value of
Improvements.
Value of
Lands and
Improvements.



160
150
140
130
120
110
100
90
80
70
60
50

This part of Section 35 taken up by
Washington Tp

140
130
120
110
100
90
80
70
60
50
40
30
20
10
1
10
10
20
20
30
30
40
50
60
70
80
90
100
110
120
130
140
150
160

W. B. SURBER, PLAT BOOK #77, INDIANAPOLIS

NAMES OF OWNERS.	Number of Pat.	DESCRIPTION.	Section.	Township	Range.	Acres.	Hundredths.	Value of Land.	Value of Improve-ments.	Value of Land and Improve-ments.
Jamies Louisa Anderson		pt ne	36			50				
James Knurd		pt sw ne	36			8				
J. S. Souer		pt ne sw	36			16				
o		pt sw ne	36			24				
Wm A. Souer		pt lot No 1	36			10				
		pt ne cor sw	36			26				
E. W. Steele		pt lots 1 & 8	36			39	84			
George Cline		lots 2, 3, 4, 7, pt 8	36			127	66			
o		pt sw ne	36			8				
Mary Steel		lot 6	36			36	50			
o		pt lots 4 & 5	36			44	25			
John D. Steele		pt sw	36			10				
John Vail		sw pt se	36			30				
Mary Miller		pt se	36			38	20			
A. B. Wolf		se ne	36			40				
o		pt sw ne	36			32				
Swarthy Jesse A		pt se	36			30	59			
Swarthy Mary E		pt se	36			1	1/8			
Swarthy Bertha E		pt se	36			32	3/8			
Swarthy Minnie M		pt se	36			29	3/4			

