

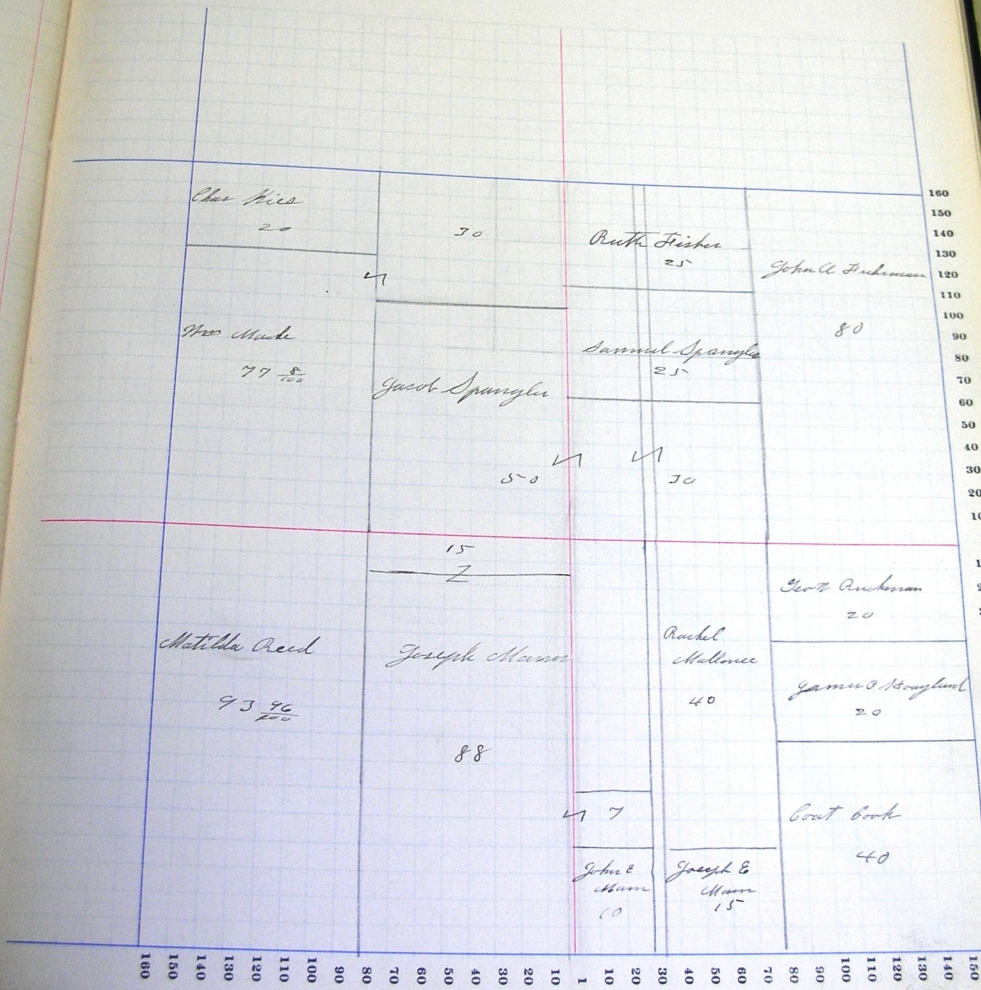
W. A. DUBOIS, PLAT BOOK, 1910, 2010, 2010, 2010

NAMES OF OWNERS.	Number of Plat.	DESCRIPTION.	Section.	Township.	Range.	Acres.	Hundredths.	Value of Land.	Value of Improvement.	Value of Land and Improvement.
John A. Tubman		e 1/2 ne	17			50				
Ruth Fisher		pt w 1/2 ne	17			25				
Char. Bies		n 1/2 nw sw	17			20				
Wm. Mucke		pt w 1/2 nw	17			97	8			
oo		n pt e 1/2 sw	17			30				
Matilda Reed		w 1/2 sw	17			97	56			
Jacob Spangler		pt w 1/2 ne	17			30				
oo		pt e 1/2 sw	17			50				
Samuel Spangler		n pt w 1/2 ne	17			25				
Joseph C. Mann		pt sw pt se	17			88				
oo		pt sw	17			15				
oo		pt e 1/2 sw	17			7				
John Mann		pt w 1/2 se	17			10				
Rachel Maloney		pt w 1/2 se	17			40				
Coat Cook		se	17			40				
Geo. Beckman		n 1/2 ne se	17			20				
James O. Hoyleland		s 1/2 ne se	17			20				

SECTION No. 19

Congressional Township No. 28, R. 14

SCALE—Forty rods to an inch, or ten rods to a space, Congress Land, which is one mile square for a section. Number of acres in this section, according to the United States Survey, 568 1/2



COUNTY, INDIANA, 1907.

Assessor's Plat-Book for

Township, No.

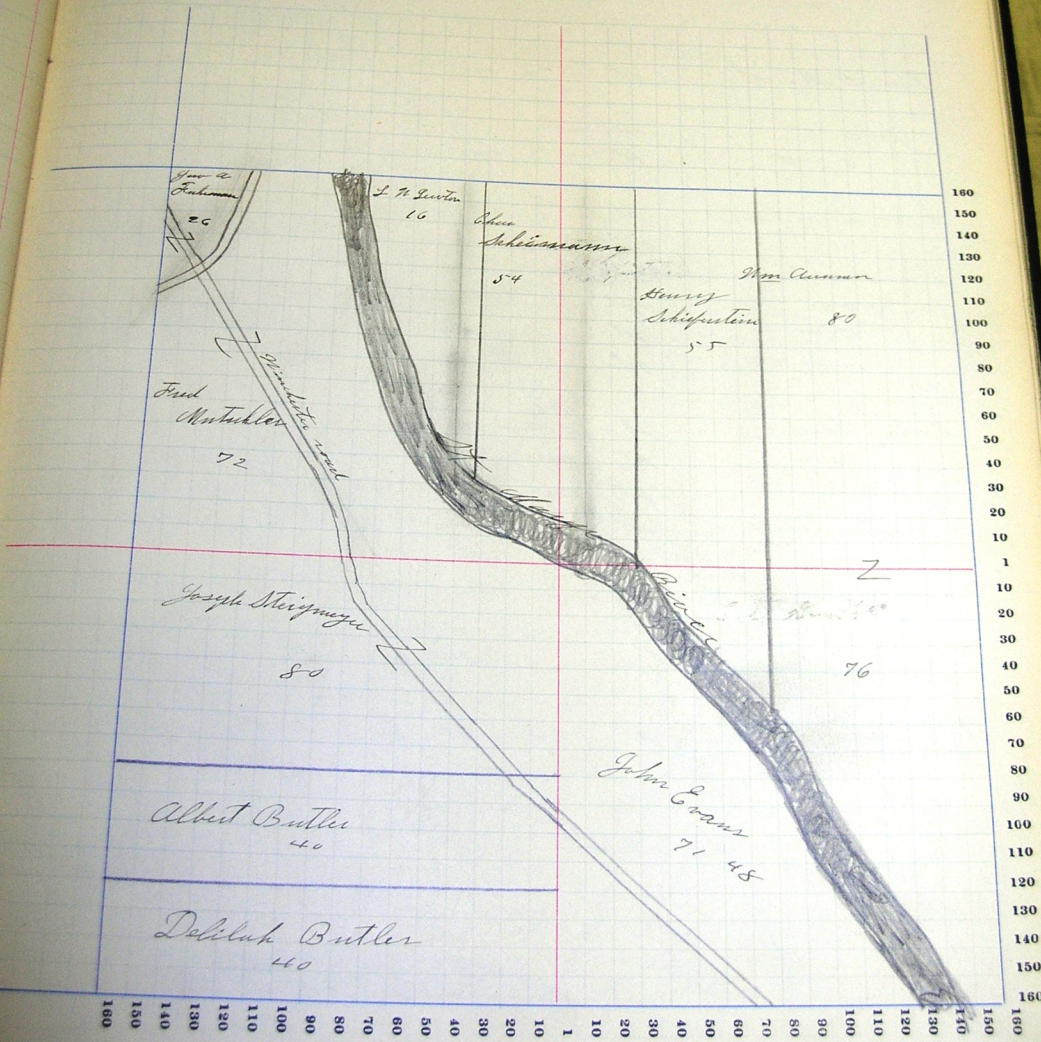
P. A. GREEN, PLAT BOOK #29, 1892-1907

NAMES OF OWNERS.	Number or Title.	DESCRIPTION.	Section.	Township.	Range.	Acres.	Hm. in lds.	Value of Land.	Value of Improvements.	Value of Total Property.
Wm Auman		E 1/2 ne	20			80				
do		apt se	20			76				
Henry Schiefelbusch		apt w 1/2 ne	20			55				
Chas Schinasse		pt n 8 nw fe	20			54				
L W Lewton		pt nw	20			16				
Geo A Funderman		pt nw	20			26				
Fred Muttler		pt nw fe	20			92				
Joseph Stigmeyer		n 1/2 sw	20			80				
Albert Butler		w 1/2 sec sw	20			40				
Delilah J Butler		ne se	20			40				
John Evans		nw fe se	20			71			48	

SECTION No. 20

Congressional Township No. 25, R. 14

SCALE—Forty rods to an inch, or ten rods to a space, Congress Land, which is one mile square for a section.  
Number of acres in this section, according to the United States Survey, 630 <sup>48</sup>/<sub>257</sub>



COUNTY, INDIANA, 1907.

Assessor's Plat-Book for

Township, No.

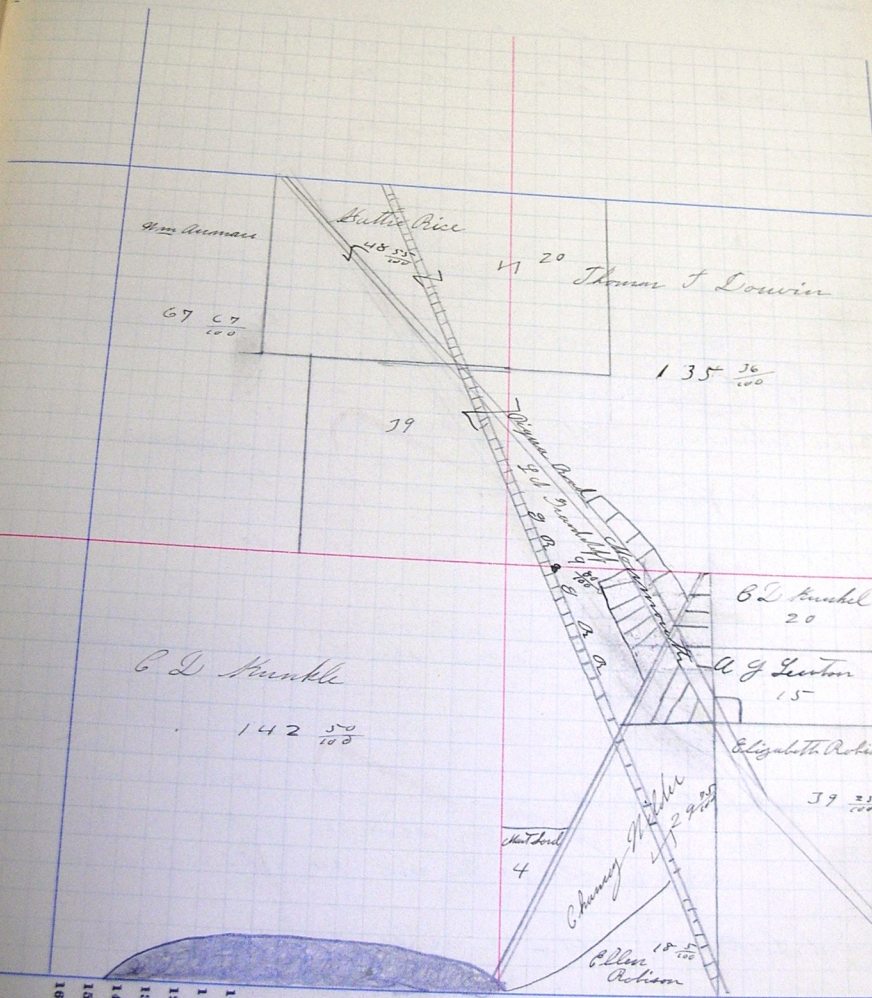
SP. A. 1870, PAGE 200, 201, 202, 203, 204.

NAMES OF OWNERS.	Number of Pts.	DESCRIPTION.	Section.	Township.	Range.	Acres.	Hundredths.	Value of Land.	Value of Improvements.	Value of Taxes and Interest.
Thomas Devlin		Se nw	21			78				
oo		E 1/2 ne	21			79				
oo		pt ne	21			37	36			
oo		E 1/2 nw ne	21			23				
Rice Hutton et al		pt w 1/2 sw	21			20				
oo		ne sw	21			36	58			
oo		pt w 1/2 nw	21			12				
Wm Auman		pt nw	21			67	67			
C D Knuckle		n 1/2 ne se	21			20				
oo		pt sw	21			133	50			
oo		pt se	21			8				
oo		pt se	21			1				
Martin Lord		pt sfc se	21			4				
oo		pt nw				1	75			
oo		pt nw ne	21			80				
L C Grandstaff		pt se	21			9	80			
oo		pt ne se	21			28				
Chaney Wilkie		pt se	21			29	75			
Elizabeth Robison		se se	21			79	25			
A J Lewton		pt ne se	21			15	85			

SECTION No. 21

Congressional Township No. 28, R. 14

SCALE—Forty rods to an inch, or ten rods to a space, Congress Land, which is one mile square for a section.  
Number of acres in this section, according to the United States Survey, 580



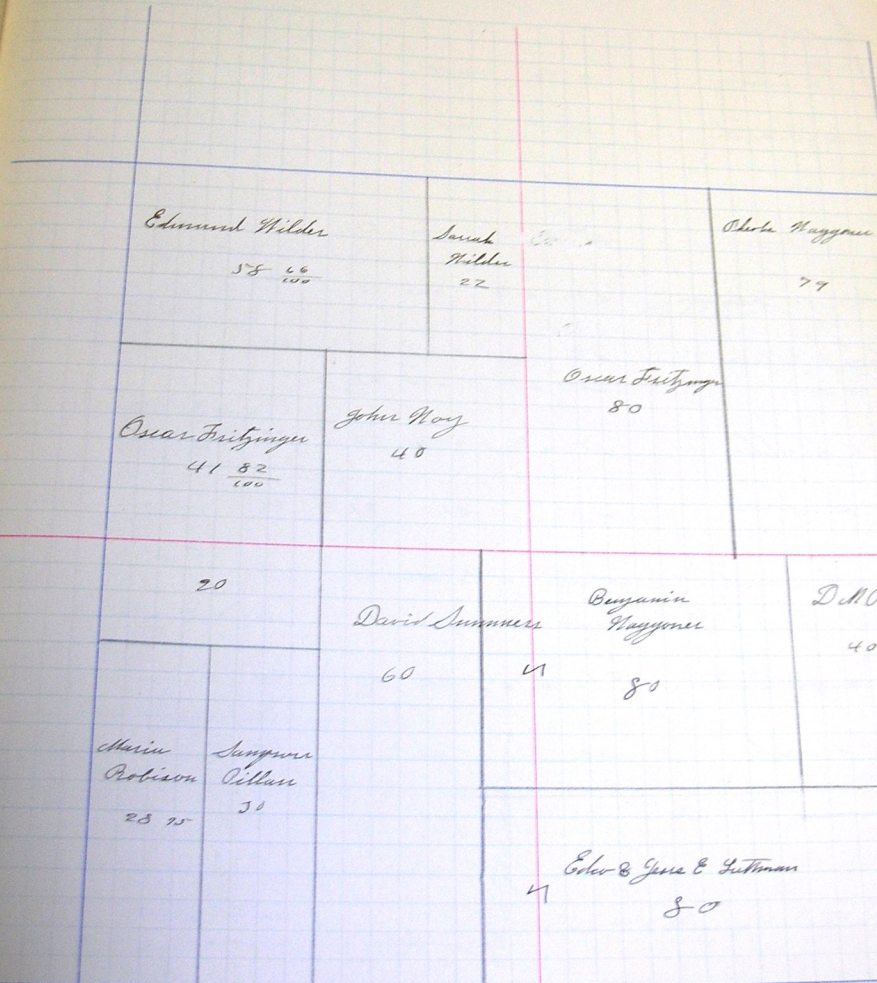
PLAT BOOK, 1907, P. 100, 101, 102, 103, 104, 105, 106, 107, 108, 109, 110, 111, 112, 113, 114, 115, 116, 117, 118, 119, 120, 121, 122, 123, 124, 125, 126, 127, 128, 129, 130, 131, 132, 133, 134, 135, 136, 137, 138, 139, 140, 141, 142, 143, 144, 145, 146, 147, 148, 149, 150, 151, 152, 153, 154, 155, 156, 157, 158, 159, 160, 161, 162, 163, 164, 165, 166, 167, 168, 169, 170, 171, 172, 173, 174, 175, 176, 177, 178, 179, 180, 181, 182, 183, 184, 185, 186, 187, 188, 189, 190, 191, 192, 193, 194, 195, 196, 197, 198, 199, 200, 201, 202, 203, 204, 205, 206, 207, 208, 209, 210, 211, 212, 213, 214, 215, 216, 217, 218, 219, 220, 221, 222, 223, 224, 225, 226, 227, 228, 229, 230, 231, 232, 233, 234, 235, 236, 237, 238, 239, 240, 241, 242, 243, 244, 245, 246, 247, 248, 249, 250, 251, 252, 253, 254, 255, 256, 257, 258, 259, 260, 261, 262, 263, 264, 265, 266, 267, 268, 269, 270, 271, 272, 273, 274, 275, 276, 277, 278, 279, 280, 281, 282, 283, 284, 285, 286, 287, 288, 289, 290, 291, 292, 293, 294, 295, 296, 297, 298, 299, 300, 301, 302, 303, 304, 305, 306, 307, 308, 309, 310, 311, 312, 313, 314, 315, 316, 317, 318, 319, 320, 321, 322, 323, 324, 325, 326, 327, 328, 329, 330, 331, 332, 333, 334, 335, 336, 337, 338, 339, 340, 341, 342, 343, 344, 345, 346, 347, 348, 349, 350, 351, 352, 353, 354, 355, 356, 357, 358, 359, 360, 361, 362, 363, 364, 365, 366, 367, 368, 369, 370, 371, 372, 373, 374, 375, 376, 377, 378, 379, 380, 381, 382, 383, 384, 385, 386, 387, 388, 389, 390, 391, 392, 393, 394, 395, 396, 397, 398, 399, 400, 401, 402, 403, 404, 405, 406, 407, 408, 409, 410, 411, 412, 413, 414, 415, 416, 417, 418, 419, 420, 421, 422, 423, 424, 425, 426, 427, 428, 429, 430, 431, 432, 433, 434, 435, 436, 437, 438, 439, 440, 441, 442, 443, 444, 445, 446, 447, 448, 449, 450, 451, 452, 453, 454, 455, 456, 457, 458, 459, 460, 461, 462, 463, 464, 465, 466, 467, 468, 469, 470, 471, 472, 473, 474, 475, 476, 477, 478, 479, 480, 481, 482, 483, 484, 485, 486, 487, 488, 489, 490, 491, 492, 493, 494, 495, 496, 497, 498, 499, 500, 501, 502, 503, 504, 505, 506, 507, 508, 509, 510, 511, 512, 513, 514, 515, 516, 517, 518, 519, 520, 521, 522, 523, 524, 525, 526, 527, 528, 529, 530, 531, 532, 533, 534, 535, 536, 537, 538, 539, 540, 541, 542, 543, 544, 545, 546, 547, 548, 549, 550, 551, 552, 553, 554, 555, 556, 557, 558, 559, 560, 561, 562, 563, 564, 565, 566, 567, 568, 569, 570, 571, 572, 573, 574, 575, 576, 577, 578, 579, 580, 581, 582, 583, 584, 585, 586, 587, 588, 589, 590, 591, 592, 593, 594, 595, 596, 597, 598, 599, 600, 601, 602, 603, 604, 605, 606, 607, 608, 609, 610, 611, 612, 613, 614, 615, 616, 617, 618, 619, 620, 621, 622, 623, 624, 625, 626, 627, 628, 629, 630, 631, 632, 633, 634, 635, 636, 637, 638, 639, 640, 641, 642, 643, 644, 645, 646, 647, 648, 649, 650, 651, 652, 653, 654, 655, 656, 657, 658, 659, 660, 661, 662, 663, 664, 665, 666, 667, 668, 669, 670, 671, 672, 673, 674, 675, 676, 677, 678, 679, 680, 681, 682, 683, 684, 685, 686, 687, 688, 689, 690, 691, 692, 693, 694, 695, 696, 697, 698, 699, 700, 701, 702, 703, 704, 705, 706, 707, 708, 709, 710, 711, 712, 713, 714, 715, 716, 717, 718, 719, 720, 721, 722, 723, 724, 725, 726, 727, 728, 729, 730, 731, 732, 733, 734, 735, 736, 737, 738, 739, 740, 741, 742, 743, 744, 745, 746, 747, 748, 749, 750, 751, 752, 753, 754, 755, 756, 757, 758, 759, 760, 761, 762, 763, 764, 765, 766, 767, 768, 769, 770, 771, 772, 773, 774, 775, 776, 777, 778, 779, 780, 781, 782, 783, 784, 785, 786, 787, 788, 789, 790, 791, 792, 793, 794, 795, 796, 797, 798, 799, 800, 801, 802, 803, 804, 805, 806, 807, 808, 809, 810, 811, 812, 813, 814, 815, 816, 817, 818, 819, 820, 821, 822, 823, 824, 825, 826, 827, 828, 829, 830, 831, 832, 833, 834, 835, 836, 837, 838, 839, 840, 841, 842, 843, 844, 845, 846, 847, 848, 849, 850, 851, 852, 853, 854, 855, 856, 857, 858, 859, 860, 861, 862, 863, 864, 865, 866, 867, 868, 869, 870, 871, 872, 873, 874, 875, 876, 877, 878, 879, 880, 881, 882, 883, 884, 885, 886, 887, 888, 889, 890, 891, 892, 893, 894, 895, 896, 897, 898, 899, 900, 901, 902, 903, 904, 905, 906, 907, 908, 909, 910, 911, 912, 913, 914, 915, 916, 917, 918, 919, 920, 921, 922, 923, 924, 925, 926, 927, 928, 929, 930, 931, 932, 933, 934, 935, 936, 937, 938, 939, 940, 941, 942, 943, 944, 945, 946, 947, 948, 949, 950, 951, 952, 953, 954, 955, 956, 957, 958, 959, 960, 961, 962, 963, 964, 965, 966, 967, 968, 969, 970, 971, 972, 973, 974, 975, 976, 977, 978, 979, 980, 981, 982, 983, 984, 985, 986, 987, 988, 989, 990, 991, 992, 993, 994, 995, 996, 997, 998, 999, 1000

NAMES OF OWNERS	Number of Plots	DESCRIPTION.	Section	Township	Range	Acres.	Hundredths	Value of Land.	Value of Improvements	Value of Land and Improvements
Chas Waggoner	1/2	nc	22			79				
Berj Waggoner	pt w 1/2	nc	22			58				
	pt e 1/2	sw	22			12				
	pt e 1/2	se	22			18				
Sarah Wilder	opt n 1/2	sw	22			22				
Edmond Wilder	pt n 1/2	sw				58	66			
Oscar Fitzinger	sw	sw	22			41	82			
oo oo	w 1/2	ne	22			80				
John Hoy	se	sw	22			40				
Maria Robison	pt	sw	22			28	75			
Sampson Pillar	pt w 1/2	sw	22			30				
David Sumner	n 1/2	sw	22			80				
D A Rice	pt e 1/2	se	22			40				
Edo & Jesse Luttman	pt	se	22			49				
	pt e 1/2	sw	22			8				
	pt w 1/2	sw	22			23				
Edward Luttman	pt s 1/2	se se	22			3				

SECTION No. 22

Congressional Township No. 28, R. 14

SCALE—Forty rods to an inch, or ten rods to a space, Congress Land, which is one mile square for a section.  
Number of acres in this section, according to the United States Survey,  $\frac{663.87}{100}$



160  
150  
140  
130  
120  
110  
100  
90  
80  
70  
60  
50  
40  
30  
20  
10  
1  
10  
20  
30  
40  
50  
60  
70  
80  
90  
100  
110  
120  
130  
140  
150  
160

160  
150  
140  
130  
120  
110  
100  
90  
80  
70  
60  
50  
40  
30  
20  
10  
1  
10  
20  
30  
40  
50  
60  
70  
80  
90  
100  
110  
120  
130  
140  
150  
160

John Lutzman  
J

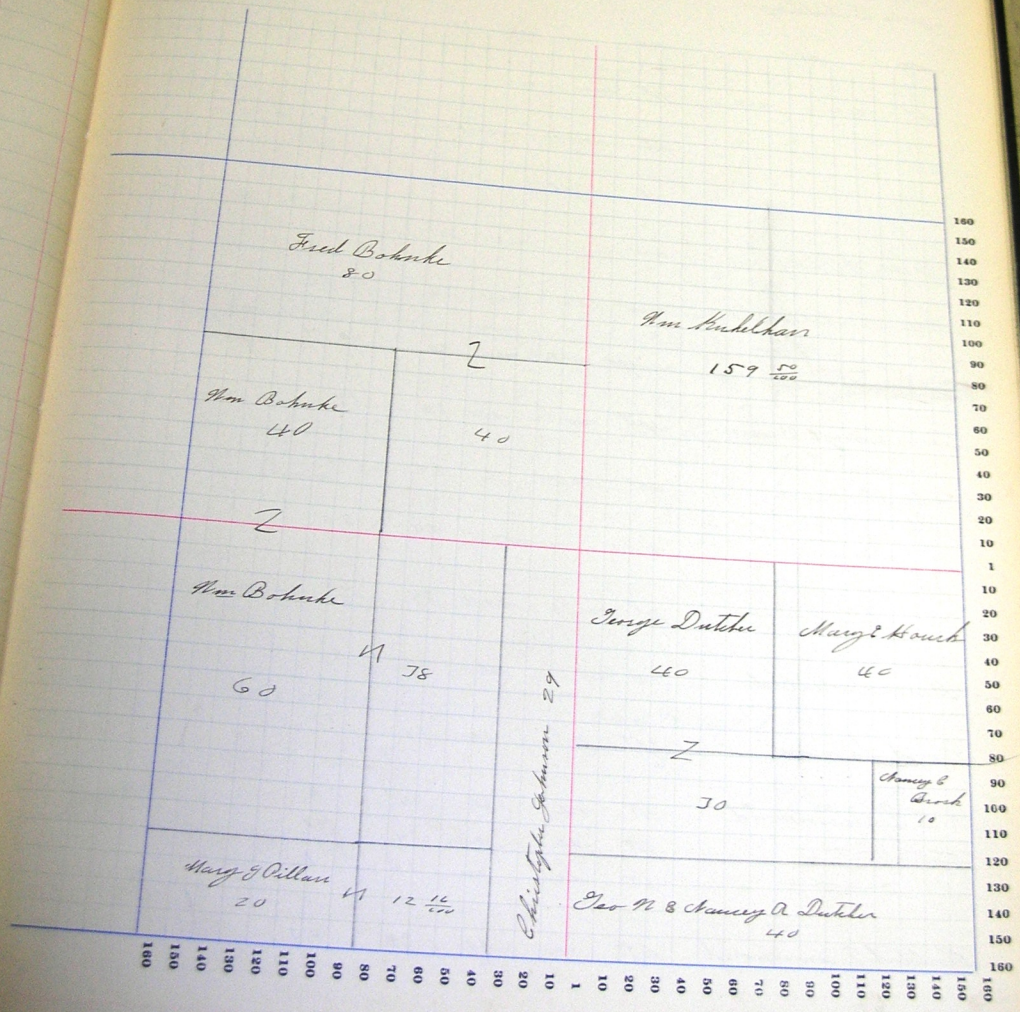


NAMES OF OWNERS.	Number on Plat.	DESCRIPTION.	Section.	Township.	Range.	Acres.	Hundredths.	Value of Land.	Value of Improvement.	Value of Land and Improvements.
Wm Kuehler		ne	27			107	50			
Fred Bohmke		se nw	27			40				
—		n 1/2 nw	27			80				
Wm Bohmke		sw nw	27			40				
—		n pt w 1/2 sw	27			60				
—		pt e 1/2 sw	27			38				
Christophe Johnson		e 1/2 e 1/2 sw	27			29				
Mary J Pillars		s 1/2 sw sw	27			20				
—		sw 1/2 e 1/2 sw	27			12	16			
Geo W Dutcher		pt n 1/2 s 1/2 se	27			30				
—		nw se	27			40				
James C Brock		pt n 1/2 s 1/2 se	27			10				
G. H. & Nancy A Dutcher		E 1/2 s 1/2 se	27			40				
Mary C. Housh		ne se	27			40				

SECTION No. 23

Congressional Township No. 28, R. 14

SCALE—Forty rods to an inch, or ten rods to a space, Congress Land, which is one mile square for a section. Number of acres in this section, according to the United States Survey.  $6 \frac{25}{100}$



Assessor's Plat-Book for

Township, No.

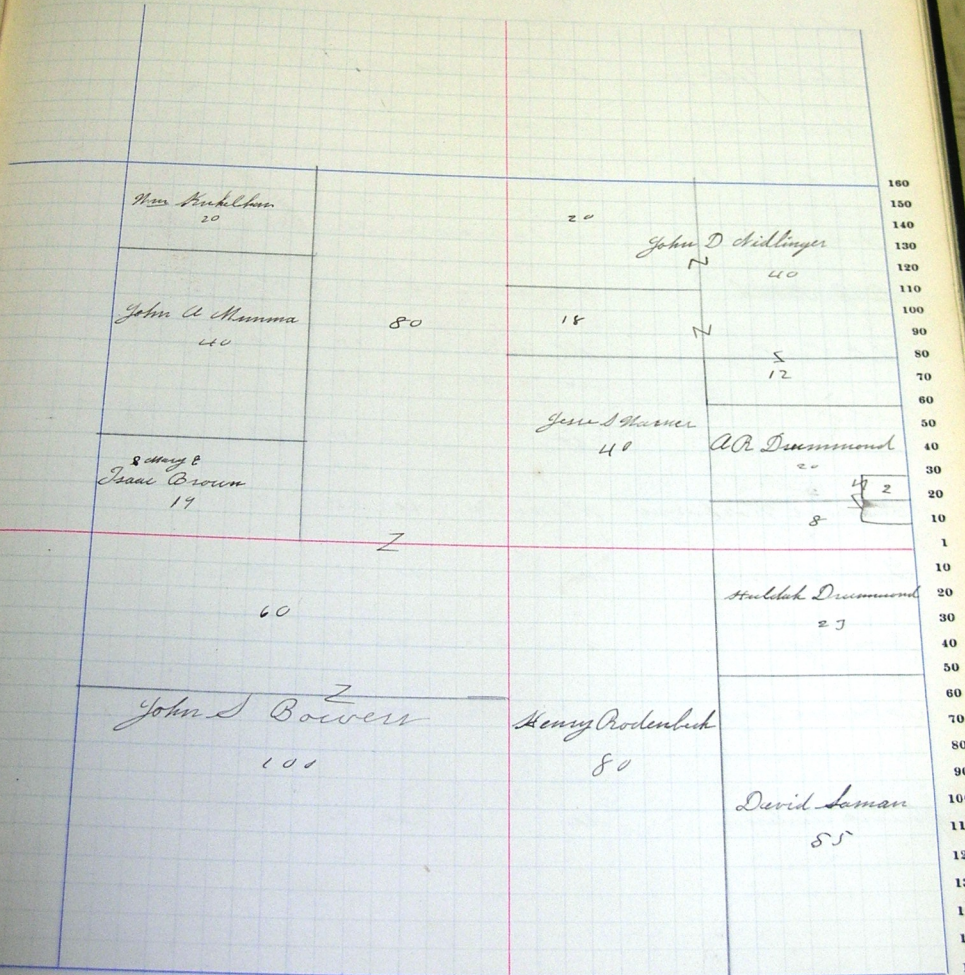
NAMES OF OWNERS.	Number or Plat.	DESCRIPTION.	Section.	Township.	Range.	Acres.	Hundredths.	Value of Land.	Value of Improvements.	Value of Land and Improvements.
John D. Dillinger		nw pt ne	24			20				
do do		ne ne	24			40				
pt ne ne		pt ne ne	24			18				
		<del>pt ne ne</del>	<del>24</del>			<del>15</del>				
		pt s pt ne	24			12				
Jesse S. Warner		sw ne	24			40				
Wm. Kuhlman		nw cor nw	24			20	50			
		mid pt w 1/2 nw	24			40	50			
Isaac & Mary C. Brown		s pt w 1/2 sw	24			19				
John S. Bowers		s pt sw	24			100				
do		e 1/2 nw	24			80				
do		pt n 1/2 sw	24			60				
Henry Rodenbeck		w 1/2 se	24			80				
David Saman		s pt e 1/2 se	24			55				
R. A. Drummond		pt ne se	24			2				
do		pt se ne	24			20				
do		pt se ne	24			8				
Hubert Drummond		pt ne se	24			25				

SECTION No. 24

Congressional Township No. 28, R. 14

SCALE—Forty rods to an inch, or ten rods to a space, Congress Land, which is one mile square for a section. Number of acres in this section, according to the United States Survey, 638

Value of Land and Improvements



160 150 140 130 120 110 100 90 80 70 60 50 40 30 20 10 1 10 20 30 40 50 60 70 80 90 100 110 120 130 140 150 160

Assessor's Plat-Book for

Township, No.

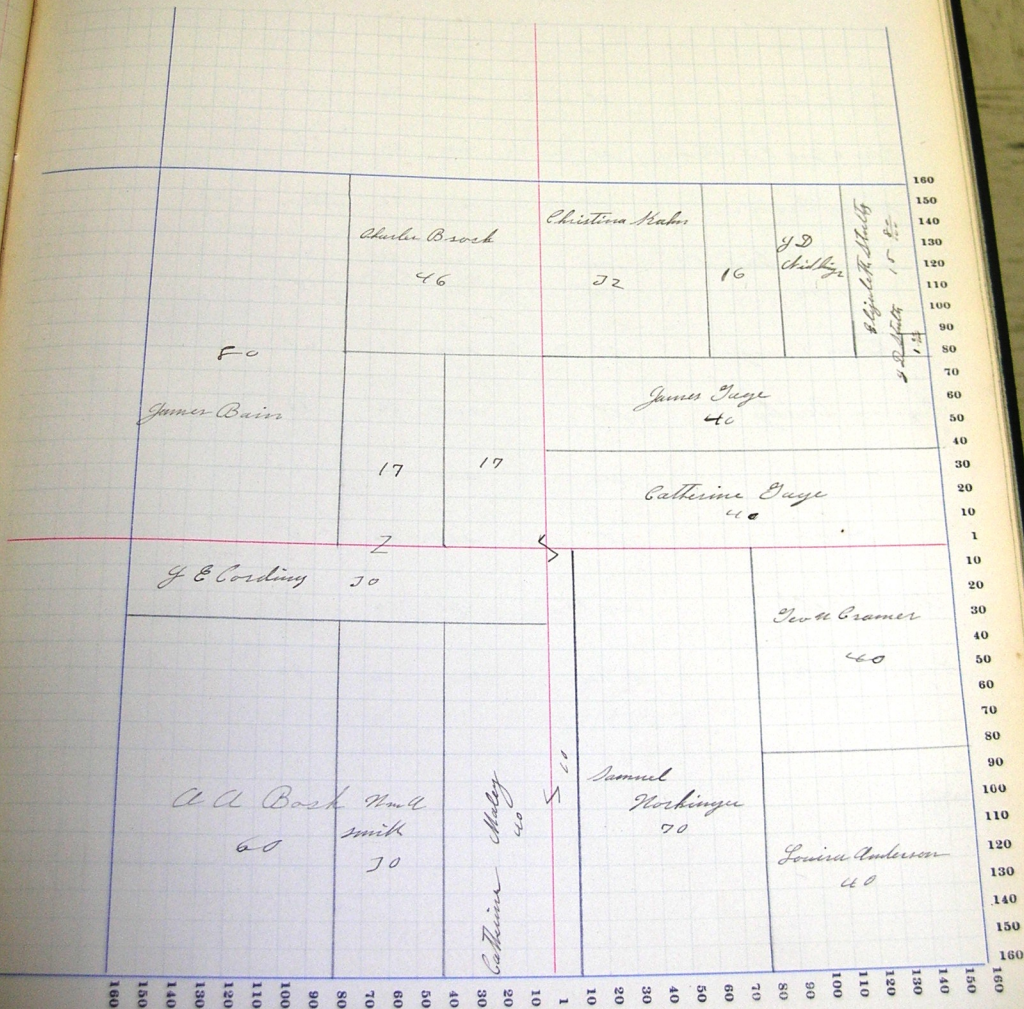
U. S. GEOLOGICAL SURVEY

NAMES OF OWNERS.	Number of Plat.	DESCRIPTION.	Section.	Township.	Range.	Acres.	Hearthths.	Value of Land.	Value of Improvements.	Value of Lumber and Improvements made.
Elizabeth Stultz		pt n 1/2 ne	25			15.80				
John D. Stultz		pt n 1/2 ne	25			1.20				
John D. Schilling		pt n 1/2 ne	25			15				
Christina Kuhn		pt n 1/2 ne	25			72				
Charles Brock		npt e 1/2 sw	25			46				
James Bain		w 1/2 sw	25			80				
<del>W. G. Bosh</del>		s 1/2 sw - less 20 acres	25			60				
J. E. Cording		pt n 1/2 ne	25			30				
		w 1/2 se ne	25			17				
		w								
Wm. C. Smith		pt	25			30				
Samuel Workinger		pt w 1/2 se	25			70				
Geo. H. Cramer		ne	25			40				
James Page		s 1/2 s 1/2 ne	25			40				
Catherine Page		n 1/2 s 1/2 ne	25			40				
Louise Andersson		se	25			40				

SECTION No. 25

Congressional Township No. 28, R. 14

SCALE—Forty rods to an inch, or ten rods to a space, Congress Land, which is one mile square for a section. Number of acres in this section, according to the United States Survey, 640



Value of Land and Improvements

COUNTY, INDIANA, 1907.

Assessor's Plat-Book for

Township, No.

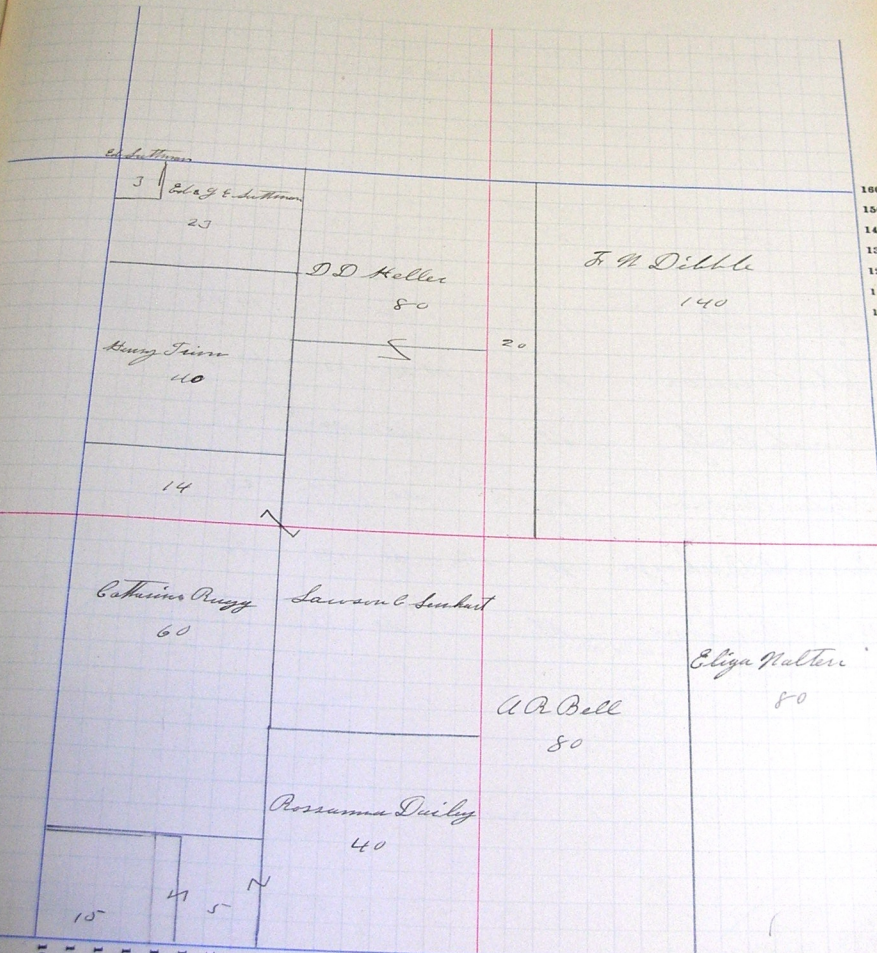
DEPARTMENT OF REVENUE

NAMES OF OWNERS.	Number on Plat.	DESCRIPTION.	Section.	Township.	Range.	Acres.	Hundredths.	Value of Land.	Value of Improvements.	Value of Land and Improvements.
F. H. Dibble		ept ne	26			140				
D. D. Hales		w 1/2 w 1/2 ne	26			20				
oo		ne nw	26			80				
Ed. Lutzman		pt w 1/2 nw	26			7				
Edw & Jane C. Lutzman		pt w 1/2 nw	26			23				
Henry Triss		pt w 1/2 nw	26			40				
Samson C. Lemhart		ne sw	26			40				
oo		spt w 1/2 nw	26			14				
Catherine Ruzgy		pt w 1/2 sw	26			60				
Rosanna Daily		pt sw	26			75				
oo		se sw	26			40				
oo		pt sw sw	26			5				
A. R. Bell		w 1/2 se	26			80				
Elihu Hatterii		e 1/2 se	26			80				

SECTION No. 26

Congressional Township No. 25, R. 14

SCALE—Forty rods to an inch, or ten rods to a space, Congress Land, which is one mile square for a section.  
Number of acres in this section, according to the United States Survey, 640



Value of  
lands and  
improvements



Assessor's Plat-Book for

Township, No.

NAMES OF OWNERS.	Number on Plat.	DESCRIPTION.	Section.	Township.	Range.	Acres.	Hectares.	Value of Land.	Value of Improvements.	Value of Land and Improvements.
<i>Amack Base</i>		<i>pt ne</i>	<i>27</i>			<i>140 25</i>				
<i>Sampson Collard</i>		<i>pt e 1/2 nw</i>	<i>27</i>			<i>50 63</i>				
<i>oo</i>		<i>pt e 1/2 sw</i>				<i>1 25</i>				
<i>oo</i>		<i>sw 1/4 ne 1/2 se 1/2 ne</i>	<i>27</i>			<i>20</i>				
<i>oo</i>		<i>pt e 1/2 sw</i>	<i>27</i>			<i>27 95</i>				
<i>oo</i>		<i>pt e 1/2 nw</i>	<i>27</i>			<i>1 25</i>				
<i>John L. Finner</i>		<i>sw 1/2 nw</i>	<i>27</i>			<i>80</i>				
<i>oo</i>		<i>sw pt</i>	<i>27</i>			<i>59</i>				
<i>oo</i>		<i>pt e 1/2 nw</i>	<i>27</i>			<i>70</i>				
<i>A. J. Smith</i>		<i>pt e 1/2 sw</i>	<i>27</i>			<i>44 40</i>				
<i>John Orlove</i>		<i>pt se &amp; pt sw</i>	<i>27</i>			<i>95 6</i>				
<i>Simrod Daily</i>		<i>pt e 1/2 se</i>	<i>29</i>			<i>1</i>				
<i>Stephen Siegrist</i>		<i>pt e 1/2 se</i>	<i>27</i>			<i>22</i>				
<i>Bernard Beckmeyer</i>		<i>pt e 1/2 se</i>	<i>27</i>			<i>23</i>				
<i>Willis Fancamp</i>		<i>pt se</i>	<i>27</i>			<i>22</i>				

SECTION No. 29

Congressional Township No. 28, R. 14

SCALE—Forty rods to an inch, or ten rods to a space, Congress Land, which is one mile square for a section.  
Number of acres in this section, according to the United States Survey,  $613 \frac{77}{100}$

