

Adams County

COUNTY, INDIANA, 1907.

Assessor's Plat-Book for

Rao

Township, No. 2

PLAT BOOK FOR 1907, INDIANA

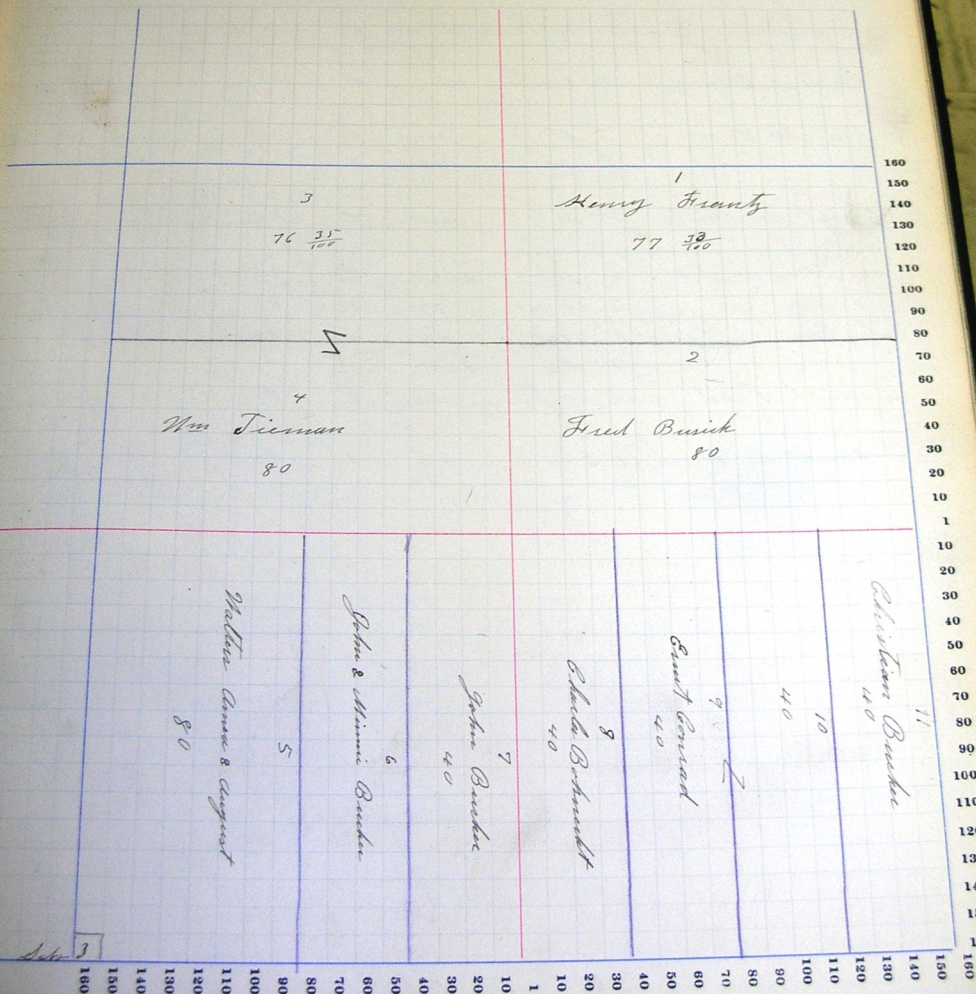
NAMES OF OWNERS.	Number of Plots.	DESCRIPTION.	Section.	Township.	Range.	Acres.	Hundredths.	Value of Lands.	Value of Improvements.	Value of Lands and Improvements.
Henry Frantz	1	n ¹ / ₂ ne	1			77	53			
Fred Busick	2	s ¹ / ₂ ne	1			80				
Wm. Siemast	3	n ¹ / ₂ nw	1			76	75			
oo oo	4	s ¹ / ₂ nw	1			80				
Walter Aug & Anna	5	w ¹ / ₂ sw	1			28	14 80			
John & Minnie Busker	6	w ¹ / ₂ e ¹ / ₂ sw	1			40				
John Busker	7	e ¹ / ₂ s ¹ / ₂ sw	1			40				
Edmund Chasler	8	w ¹ / ₂ w ¹ / ₂ se	1			40				
Conrad Ernst	9	e ¹ / ₂ w ¹ / ₂ se	1			40				
oo oo	10	w ¹ / ₂ e ¹ / ₂ se	1			40				
Busker Christian	11	e ¹ / ₂ e ¹ / ₂ se	1			40				

SECTION No. 1

Congressional Township No. 28, R. 14

SCALE—Forty rods to an inch, or ten rods to a space, Congress Land, which is one mile square for a section. Number of acres in this section, according to the United States Survey, 633 4/5.

Value of Land and Improvements



COUNTY, INDIANA, 1907.

Assessor's Plat-Book for

Reed

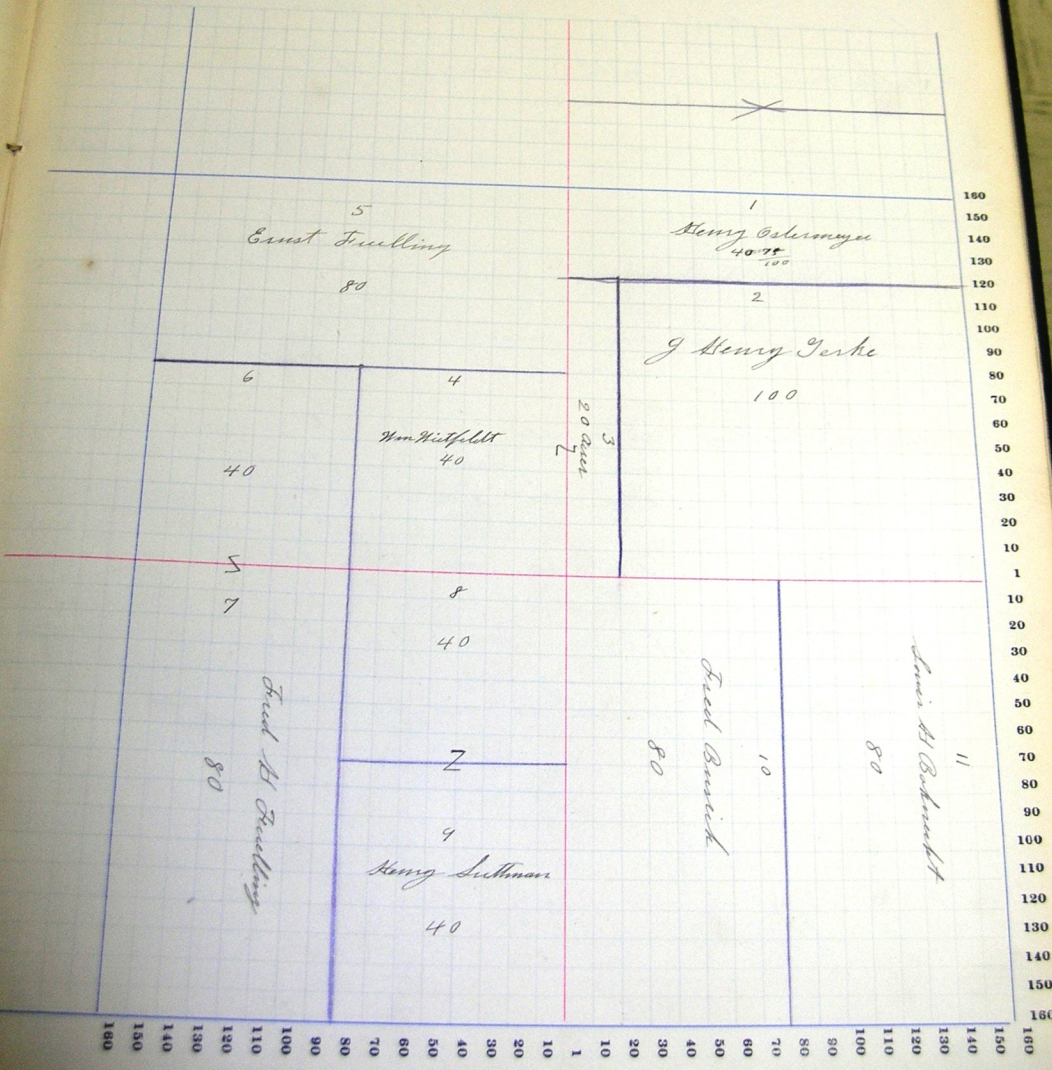
Township, No. *2*

NAMES OF OWNERS.	Number of Plat.	DESCRIPTION.	Section.	Township.	Range.	Acres.	Hundredths.	Value of Land.	Value of Improve-ments.	Value of Land and Improve-ments.
<i>Ostermeyer Henry</i>	<i>1</i>	<i>n 1/2 ne</i>	<i>2</i>			<i>40</i>	<i>75</i>			
<i>Deke J. Henry</i>	<i>2</i>	<i>e pt ne</i>	<i>2</i>			<i>100</i>				
<i>Wietfeldt W. W.</i>	<i>3</i>	<i>pt ne</i>	<i>2</i>			<i>20</i>				
<i>o o</i>	<i>4</i>	<i>se nw</i>	<i>2</i>			<i>40</i>				
<i>Ernst Fulling</i>	<i>5</i>	<i>n 1/2 nw</i>	<i>2</i>			<i>80</i>				
<i>Fulling Fred H.</i>	<i>6</i>	<i>sw ne</i>	<i>2</i>			<i>40</i>				
<i>o o</i>	<i>7</i>	<i>w 1/2 sw</i>	<i>2</i>			<i>80</i>				
<i>Lutman Henry</i>	<i>8</i>	<i>ne sw</i>	<i>2</i>			<i>40</i>				
<i>o o</i>	<i>9</i>	<i>se sw</i>	<i>2</i>			<i>40</i>				
<i>Burish Fred</i>	<i>10</i>	<i>w 1/2 se</i>	<i>2</i>			<i>80</i>				
<i>Bakewell S. H.</i>	<i>11</i>	<i>E 1/2 se</i>	<i>2</i>			<i>80</i>				

SECTION No. 2

Congressional Township No. 28, R. 14

SCALE—Forty rods to an inch, or ten rods to a space, Congress Land, which is one mile square for a section.
 Number of acres in this section, according to the United States Survey, 640⁰⁰/₁₀₀



Adams

COUNTY, INDIANA, 1907.

Assessor's Plat-Book for Root

Township, No. 2

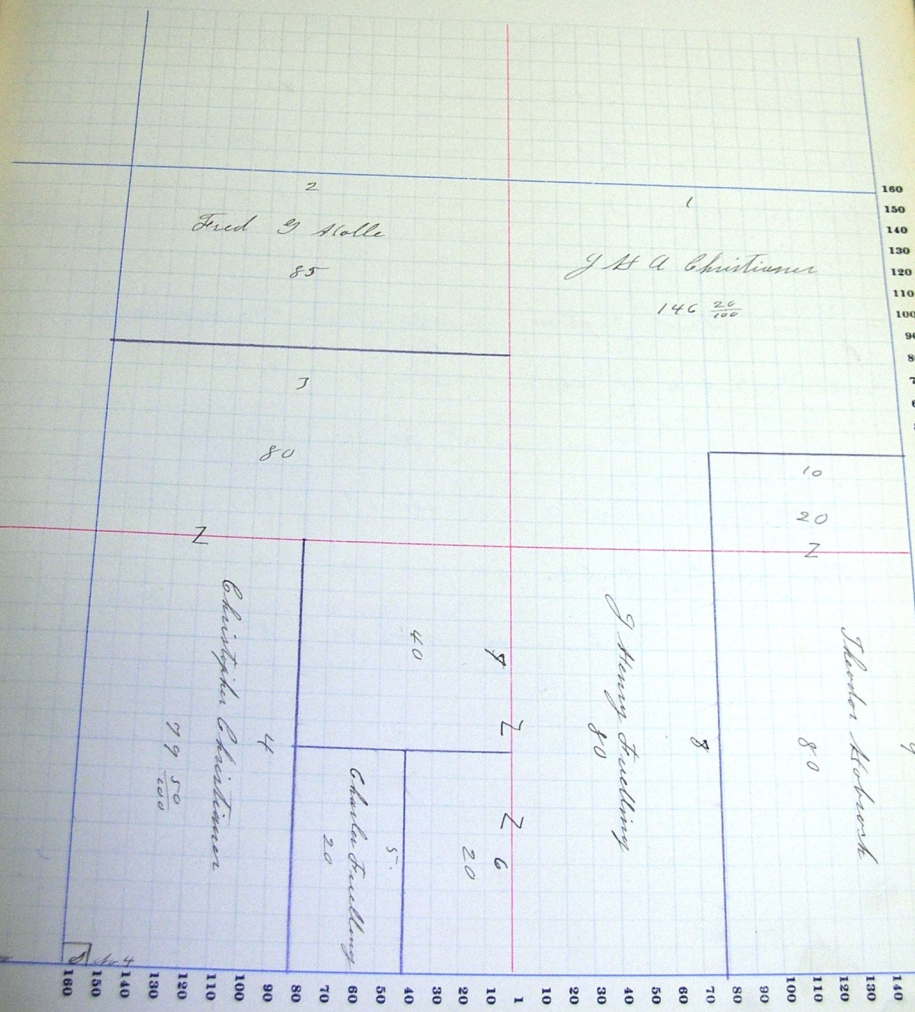
P. S. DUTTON, Assessor, No. 17, BOSTON, O.

NAMES OF OWNERS.	Number of Plat.	DESCRIPTION.	Section.	Township.	Range.	Acres.	Hundredths.	Value of Land.	Value of Improve-ments.	Value of Lands and Improve-ments.
Christian J. Ka	1	pt	ne	3		146	20			
Holle Fred G	2	n 1/2	nw	3		85				
Christman Christoph		s 1/2	nw	3		80				
oo		w 1/2	sw	3		79	50			
J Henry Fuelling		w 1/2	se	3		80				
oo		ne	sw	3		40				
oo		e 1/2	se	3		20				
Hoback Theodor		s 1/2	se	3		20				
oo		e 1/2	se	3		80				
Ekar Fuelling		w 1/2	se	3		20				

SECTION No. 5

Congressional Township No. 28, R. 14

SCALE—Forty rods to an inch, or ten rods to a space, Congress Land, which is one mile square for a section.
Number of acres in this section, according to the United States Survey, $630\frac{20}{100}$



Sub 4

Value of
Land and
Improvements

Adams

COUNTY, INDIANA, 1907.

Assessor's Plat-Book for Root

Township, No. 2

FOR A FURTHER EXPLANATION SEE INSTRUCTIONS

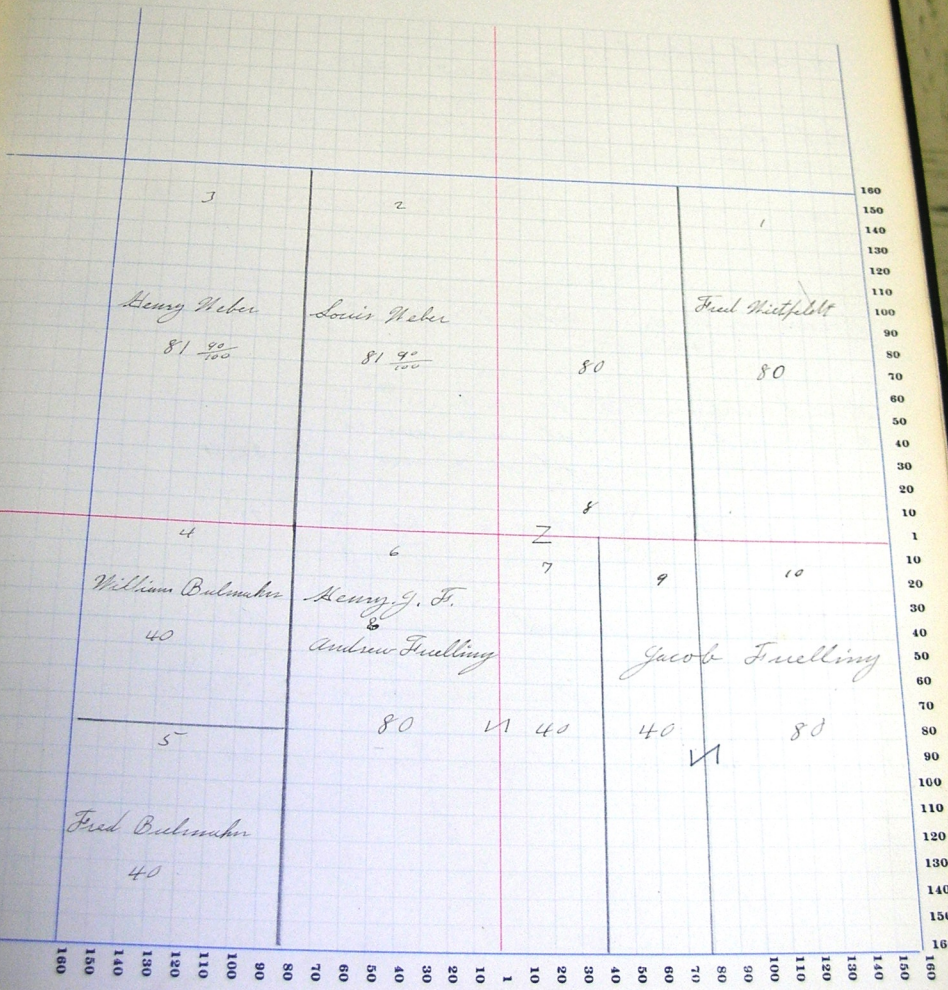
NAMES OF OWNERS.	Number of Plat.	DESCRIPTION.	Section.	Township.	Range.	Acres.	Hundredths.	Value of Lands.	Value of Improvements.	Value of Lands and Improvements.
Witzfeldt Fred	1	6 1/2 ne	4			80				
Weber Louis	2	8 1/2 sw	4			81	90			
Weber Henry	3	10 1/2 nw	4			81	90			
Bulmber D. M.	4	sw sw	4			40				
Bulmber Fred	5	pt sw sw	4			40				
Fuelling J. H. & Andrew	6	10 1/2 ne	4			80				
oo	7	10 1/2 - 10 1/2 se	4			40				
oo	8	2 1/2 sw	4			80				
Fuelling Jacob	9	6 1/2 - 10 1/2 se	4			40				
oo	10	8 1/2 se sw	40			80				

SECTION No. 24

Congressional Township No. 28, R. 14

SCALE—Forty rods to an inch, or ten rods to a space, Congress Land, which is one mile square for a section.
Number of acres in this section, according to the United States Survey, 643.820

Value of
Land and
Improvements



COUNTY, INDIANA, 1907.

Assessor's Plat-Book for Boon

Township, No. 2

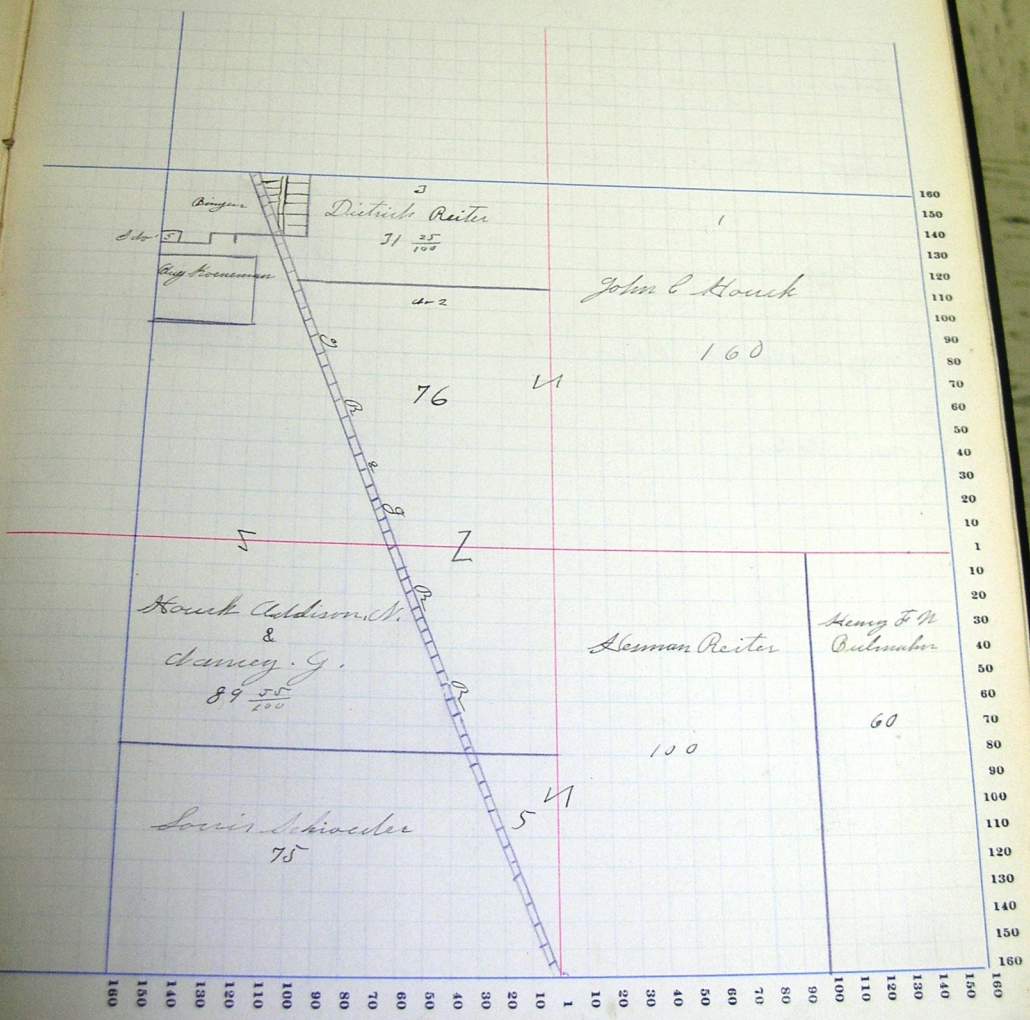
PA. A. 1. 1905. PLAT BOOK No. 272. 10/14/1907

NAMES OF OWNERS.	Number of Plots.	DESCRIPTION.	Section.	Township.	Range.	Acres.	Hundredths.	Value of Land.	Value of Improvements.	Value of Land and Improvements.
Houck John C	1	all lands E of O R 2 O R 5	ne	5		160				
oo	2	sw nw	sw	5		76				
Reiter Dietrich		pt	ne	5		31 25				
oo oo										
oo oo										
oo oo										
Moeneeman Aug		upt s 1/2 nw	sw	5		15				
Houck Addison C	5	pt n 1/2 sw	sw	5						
& Samoy C		pt n 1/2 nw	sw	5						
oo		pt s 1/2 nw	sw	5		89 55				
Schroeder Louis		pt s 1/2 sw	sw	5		75				
Reiter Herman		upt	se	5		100				
oo		pt s 1/2 sw	sw	5		5				
Belmahn H. F. W.		upt e 1/2 se	se	5		60				

SECTION No. 5

Congressional Township No. 28, R. 14

SCALE—Forty rods to an inch, or ten rods to a space, Congress Land, which is one mile square for a section.
 Number of acres in this section, according to the United States Survey, 640

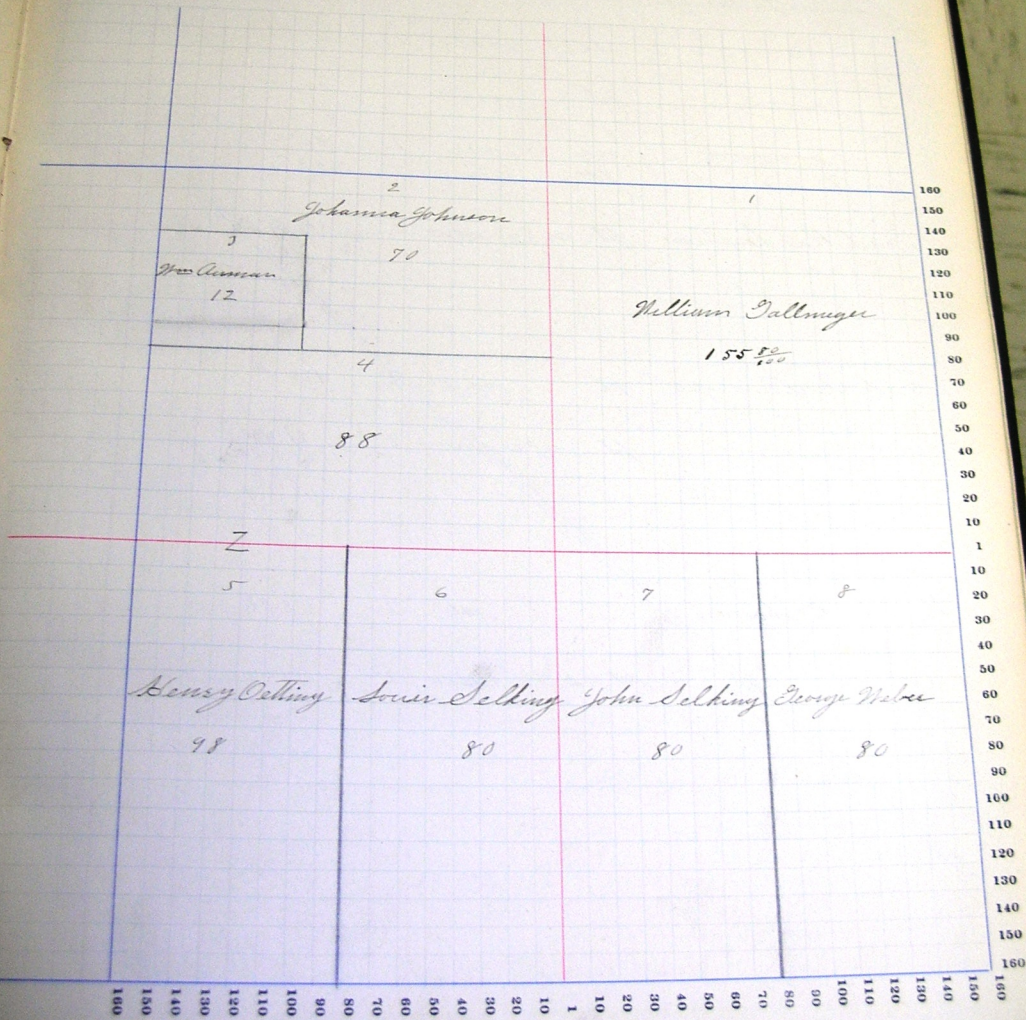


SECTION No. 6

Congressional Township No. 28, R. 14

SCALE—Forty rods to an inch, or ten rods to a space, Congress Land, which is one mile square for a section.
Number of acres in this section, according to the United States Survey, 663 ⁸⁰/₁₀₀

Value of
Land and
Improvements



COUNTY, INDIANA, 1907.

Assessor's Plat-Book for Roost

Township, No. 2

W. B. GILBERT, PLAT-BOOK # 62, 1907-1909

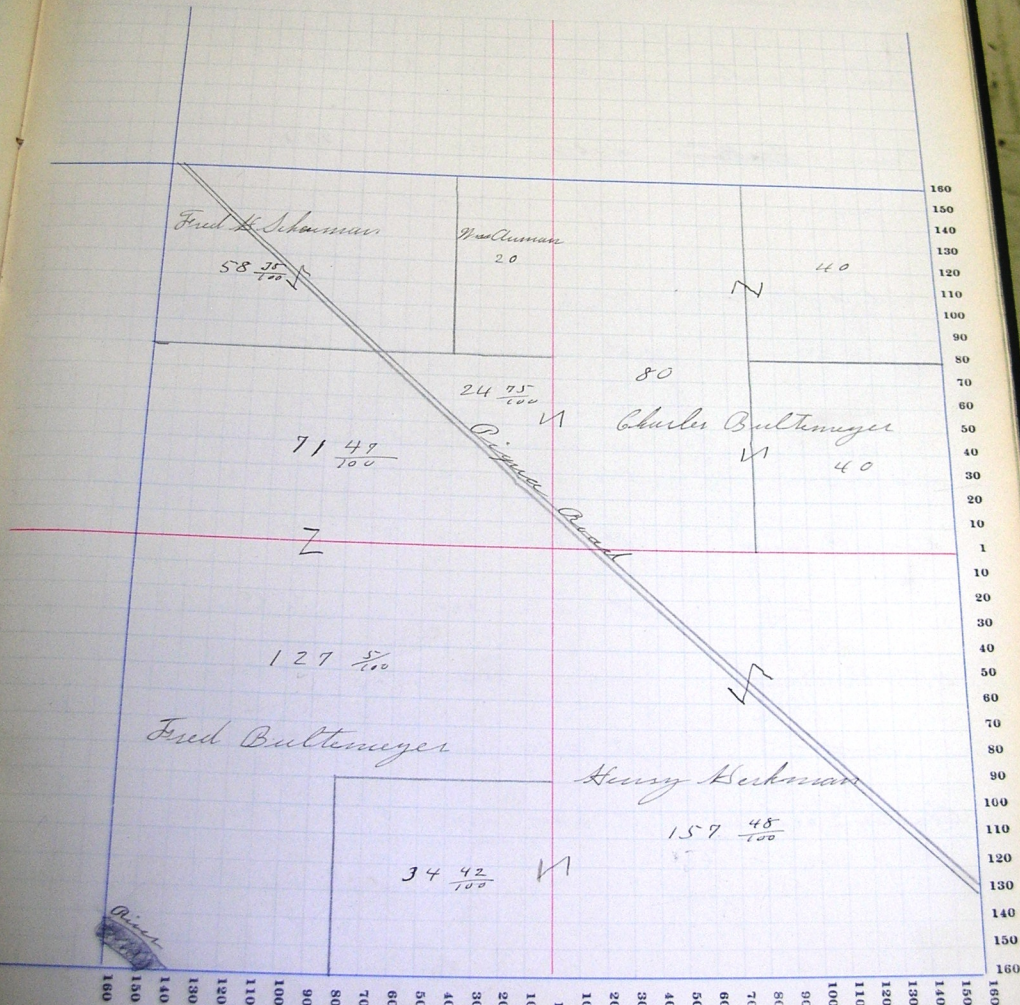
NAMES OF OWNERS.	Number of Plat.	DESCRIPTION.	Section.	Township.	Range.	Acres.	Hundredths.	Value of Land.	Value of Improvements.	Value of Land and Improvements.
Charles Balthusge	1	w 1/2 ne	7			80				
o o		se ne	7			40				
o o		pt nw	7			24	75			
o o		ne ne	7			40				
Wm. Auman		pt nw	7			20				
Fred H. Sherman		pt n 1/2 nw	7			58	35			
Fred Balthusge		pt sw	7			127	5			
o o o o		pt s 1/2 nw	2			71	47			
Henry Beckman		se	7			157	48			
		pt e 1/2 sw	7			34	42			

SECTION No. 7

Congressional Township No. 28, R. 14

SCALE—Forty rods to an inch, or ten rods to a space, Congress Land, which is one mile square for a section. Number of acres in this section, according to the United States Survey, $652 \frac{57}{100}$

Value of Land and Improvements



Adams

COUNTY, INDIANA, 1907.

Assessor's Plat-Book for Root

Township, No. 2

U. S. DEPT. OF AGRICULTURE

NAMES OF OWNERS.	Number of Plat.	DESCRIPTION.	Section.	Township.	Range.	Acres.	Mileage.	Value of Land.	Value of Improvement.	Value of Land and Improvement.
Wm Bulmahn		E 1/2 ne	8			80 75				
Fred Bulmahn		w 1/2 ne	8			74 10				
Berning Bulmahn		sw 1/2 nw	8			79 34				
o o		sw nw	8			40				
Ferdinand Berning		sw nw	8			40				
o o		pt s 1/2 sw	8			28				
o o		sw 1/2 sw	8			80				
o o		sw 1/2 nw se	8			20				
o o		E 1/2 nw se	8			20				
Henry Berning		pt s 1/2 se	8			55				
o o		pt s 1/2 sw	8			47 16				
L F W Bulmahn		ne se	8			78 72				
o o		pt s 1/2 se	8			22 45				
Charles Dirboon		pt sw sw	8			4 84				

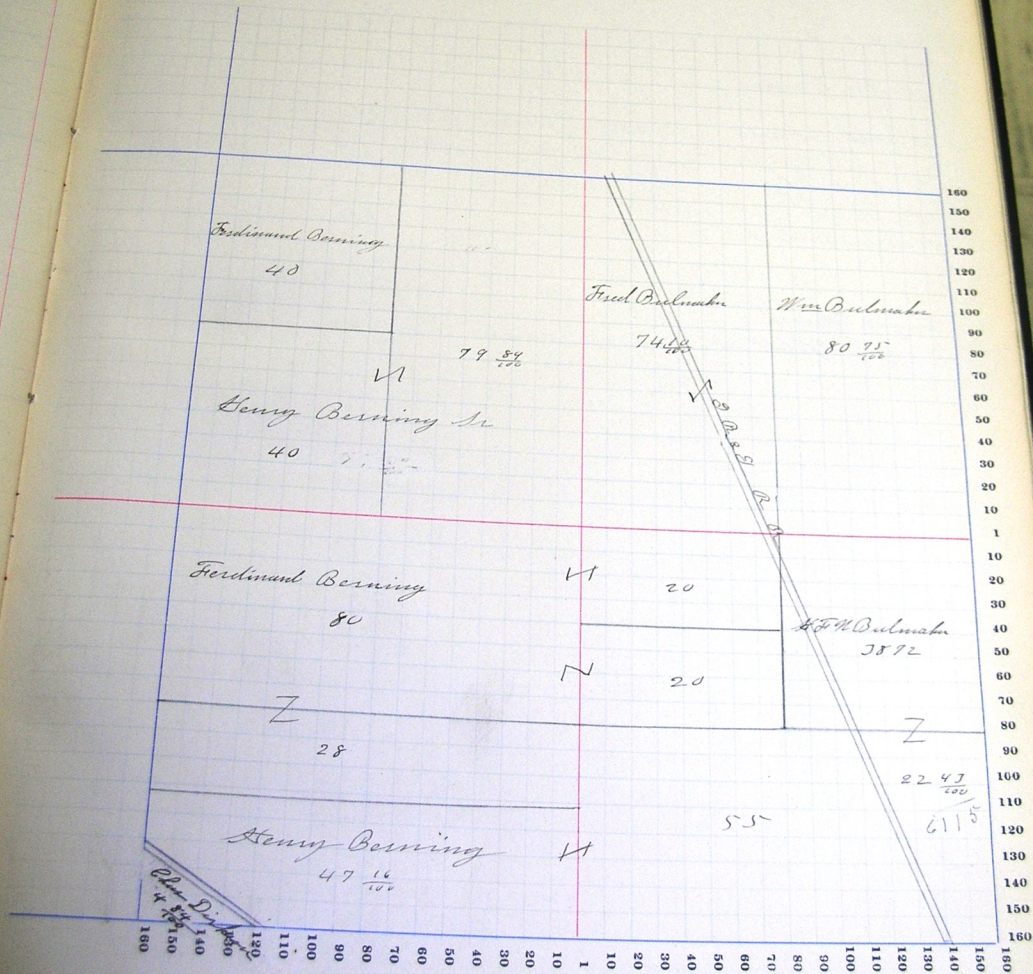
SECTION No. 8

Congressional Township No. 25, R. 14

SCALE—Forty rods to an inch, or ten rods to a space, Congress Land, which is one mile square for a section.
Number of acres in this section, according to the United States Survey, $630 \frac{37}{100}$

Value of
improvements.

Value of
lands and
improvements.



COUNTY, INDIANA, 1907.

Assessor's Plat-Book for

Township, No.

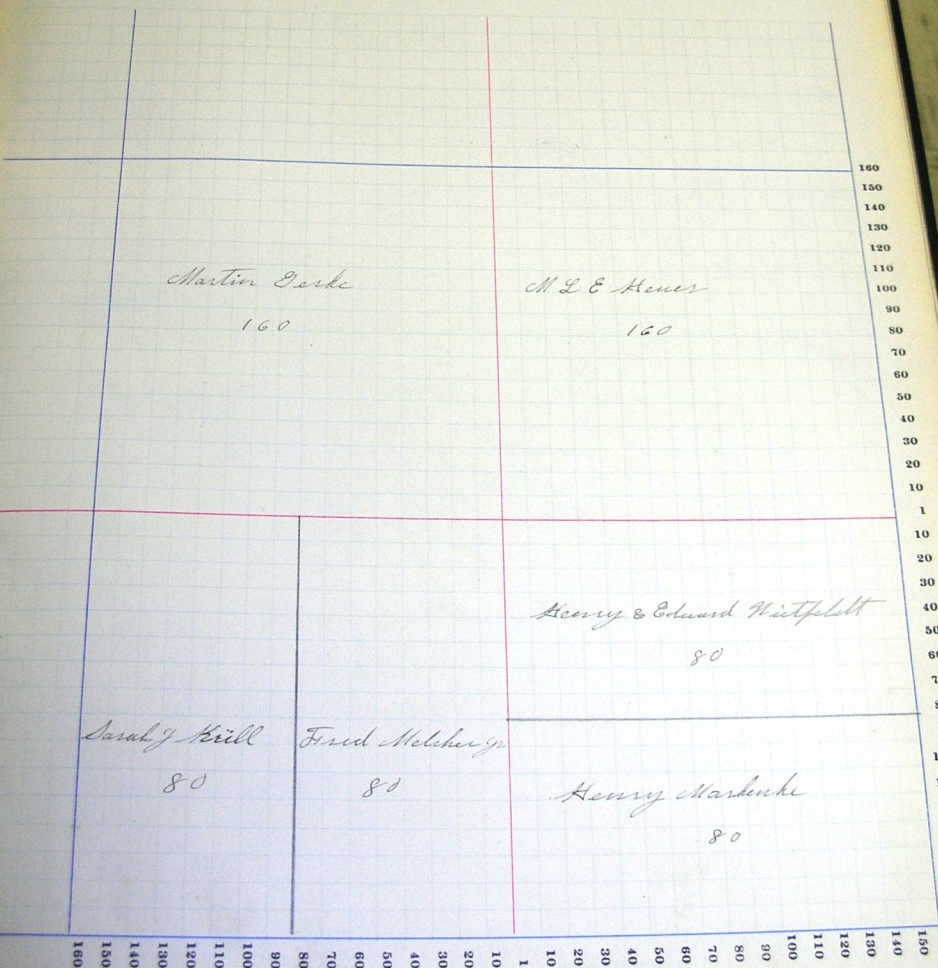
U.S. GEOLOGICAL SURVEY

NAMES OF OWNERS.	Number of Plat.	DESCRIPTION.	Section.	Township.	Range.	Acres.	Half-Acre.	Value of Land.	Value of Improvements.	Value of Loans and Improvements.
M L B Heuer		see	9			100				
Martin Gerke		see	9			100				
Sarah G. Krill	w 1/2	sw	9			80				
Fred Melcher	E 1/2	sw	9			80				
Henry Markwinke	S 1/2	se	9			80				
Henry & Edward Wietfeldt	w 1/2	se				80				

SECTION No. 7

Congressional Township No. _____, R. _____

SCALE—Forty rods to an inch, or ten rods to a space, Congress Land, which is one mile square for a section.
Number of acres in this section, according to the United States Survey, 640



Value of Land and Improvements