

COUNTY, INDIANA, 1907.

Assessor's Plat-Book for

Root

Township, No. *2*

DEPT. OF REVENUE, INDIANA

NAMES OF OWNERS.	Number or Part.	DESCRIPTION.	Section.	Township.	Range.	Acres.	Headlands.	Value of Lands.	Value of Improvements.	Value of Lands and Improvements.
<i>Wm Fuelling</i>		<i>E 1/2 ne</i>	<i>10</i>			<i>80</i>				
<i>do</i>		<i>pt se</i>	<i>10</i>			<i>70</i>				
<i>Marion Burke</i>		<i>n 1/2 nw</i>	<i>10</i>			<i>80</i>				
<i>do</i>		<i>sw nw</i>	<i>10</i>			<i>40</i>				
<i>Edward Eyz</i>		<i>nw sw</i>	<i>10</i>			<i>40</i>				
<i>Fred Melcher Sr</i>		<i>sw sw</i>	<i>10</i>			<i>40</i>				
<i>Heenan Gerke</i>		<i>w 1/2 w 1/2 se</i>	<i>10</i>			<i>40</i>				
<i>do</i>		<i>se nw</i>	<i>10</i>			<i>40</i>				
<i>do</i>		<i>w 1/2 ne</i>	<i>10</i>			<i>80</i>				
<i>do</i>		<i>E 1/2 sw</i>	<i>10</i>			<i>80</i>				
<i>Otto Boeyer</i>		<i>spt se</i>	<i>10</i>			<i>80</i>				
<i>Chas Fuelling</i>		<i>pt ne se</i>	<i>10</i>			<i>10</i>				

COUNTY, INDIANA, 1907.

Assessor's Plat-Book for

Township, No.

PLAT BOOK

NAMES OF OWNERS.	Number of Plat.	DESCRIPTION.	Section.	Township.	Range.	Acres.	Hundredths.	Value of Land.	Value of Improvements.	Value of Lease and Improvements.
Wm H. Kelle			12			160				
Ferdinand Schuman			12			40				
Christ Becker			12			40				
Anna & Amy Walters			12			80				
G. Wm. Knapp			12			80				
Fred Kinkelhan			12			40				
Wm. Kinkelhan			12			40				
John Becker			12			80				
Susan House			12			80				

Assessor's Plat-Book for

Township, No.

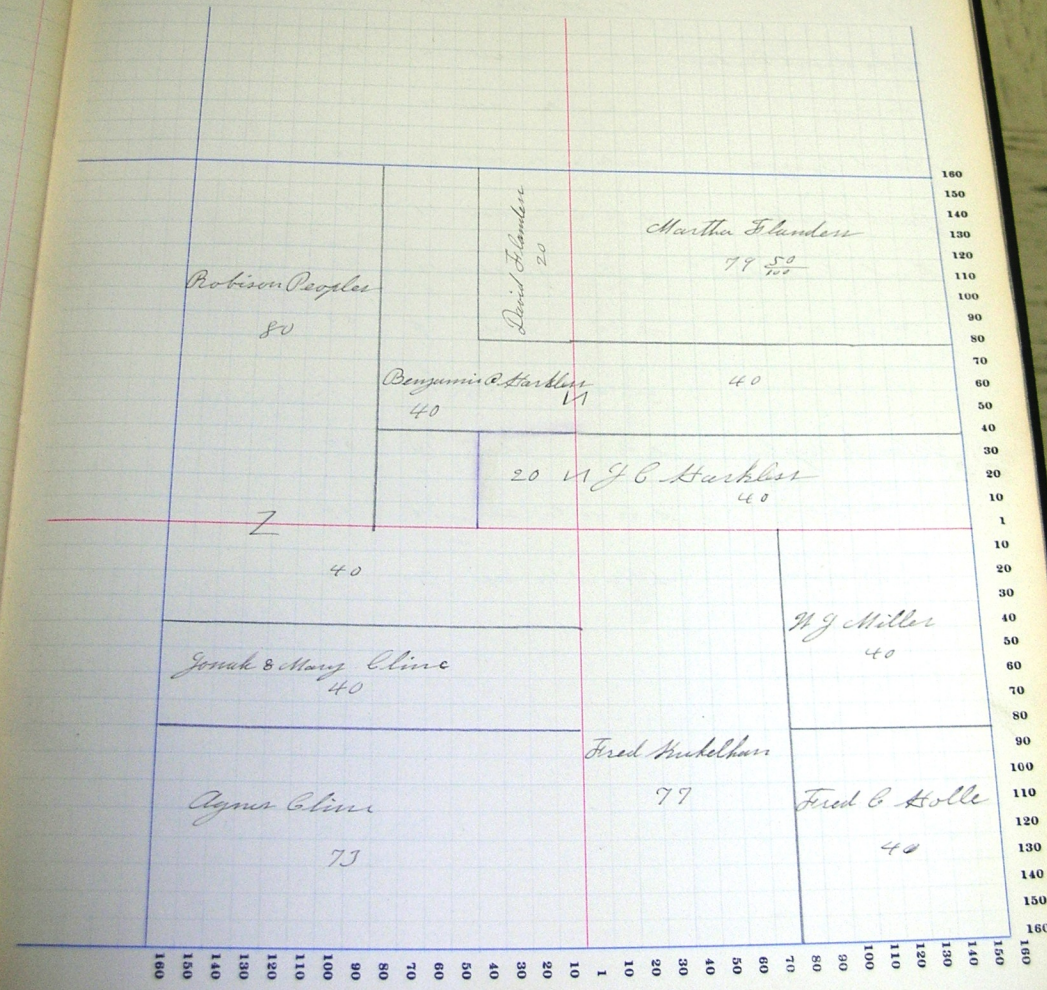
PLAT-BOOK, 1907, P. 10, 11, 12, 13, 14, 15, 16, 17, 18, 19, 20, 21, 22, 23, 24, 25, 26, 27, 28, 29, 30, 31, 32, 33, 34, 35, 36, 37, 38, 39, 40, 41, 42, 43, 44, 45, 46, 47, 48, 49, 50, 51, 52, 53, 54, 55, 56, 57, 58, 59, 60, 61, 62, 63, 64, 65, 66, 67, 68, 69, 70, 71, 72, 73, 74, 75, 76, 77, 78, 79, 80, 81, 82, 83, 84, 85, 86, 87, 88, 89, 90, 91, 92, 93, 94, 95, 96, 97, 98, 99, 100

NAMES OF OWNERS.	Number of Plat.	DESCRIPTION.	Section.	Township.	Range.	Acres.	Homestead.	Value of Land.	Value of Improvements.	Value of Land and Improvements.
Martin Flanders		n 1/2 n 1/2 ne	17			79.50				
David Flanders		ne pt e 1/2 nw	17			20				
Robison Oglesby		w 1/2 nw	17			80				
—		n 1/2 n 1/2 sw	17			40				
Benj O Harkler		s pt ne nw	17			40				
—		n 1/2 s 1/2 ne	17			40				
J C Harkler		s 1/2 s 1/2 ne	17			40				
—		pt sw e 1/2 nw	17			20				
Frank & Mary E Coline		s 1/2 n 1/2 sw	17			40				
Agnes Coline		s 1/2 sw	17			77				
Fred Kubelhan		w 1/2 se	17			97				
Fred C Hall		s 1/2 e 1/2 se	17			40				
W J Miller		n 1/2 e 1/2 se	17			40				

SECTION No. 13

Congressional Township No. 28, R. 14

SCALE - Forty rods to an inch, or ten rods to a space, Congress Land, which is one mile square for a section.
Number of acres in this section, according to the United States Survey, 637 1/2



Value of
Land and
Improvements

COUNTY, INDIANA, 1907.

Assessor's Plat-Book for

Township, No.

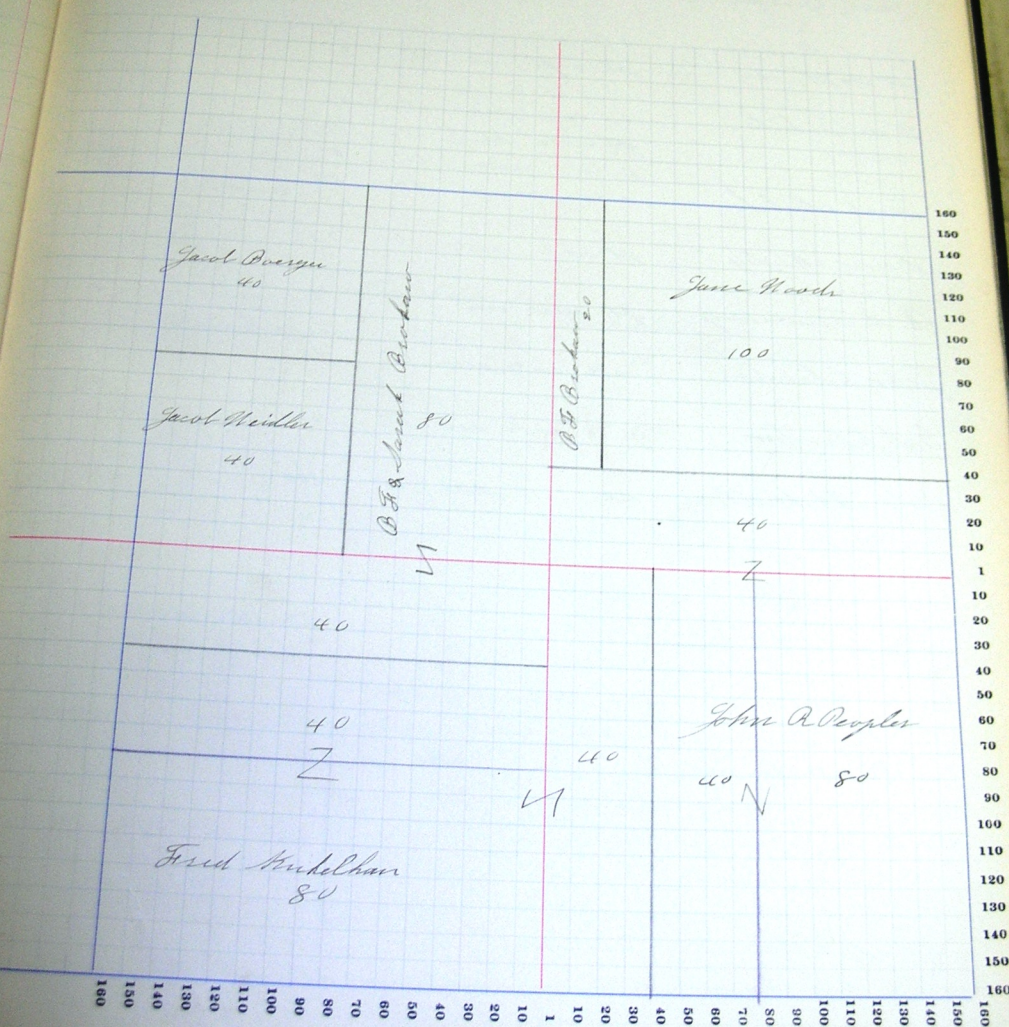
W. & W. CO., EAST CHICAGO, ILL., PROPRIETORS

NAMES OF OWNERS.	Number on Plat.	DESCRIPTION.	Section.	Township.	Range.	Acres.	Hundredths.	Value of Land.	Value of Improvements.	Value of Land and Improvements.
Gene Woods		ne pt ne	14			100				
B F Prokaw		pt wpt ne	14			20				
B F & Sarah Prokaw		e 1/2 ne	14			80				
o o		n 1/2 n 1/2 sw	14			40				
Geod Berge		se 1/2 w 1/2 nw	14			40				
Geod Meiller		s 1/2 w 1/2 nw	14			40				
Fred Muhlbach		s 1/2 n 1/2 sw	14			40				
o o		s 1/2 sw	14			80				
o o		w 1/2 w 1/2 se	14			40				
John R. Peoples		e 1/2 se	14			80				
o o		e 1/2 n 1/2 se	14			40				
o o		s 1/2 s 1/2 ne	14			40				

SECTION No. 14

Congressional Township No. _____, R. _____

SCALE—Forty rods to an inch, or ten rods to a space, Congress Land, which is one mile square for a section.
Number of acres in this section, according to the United States Survey, 640



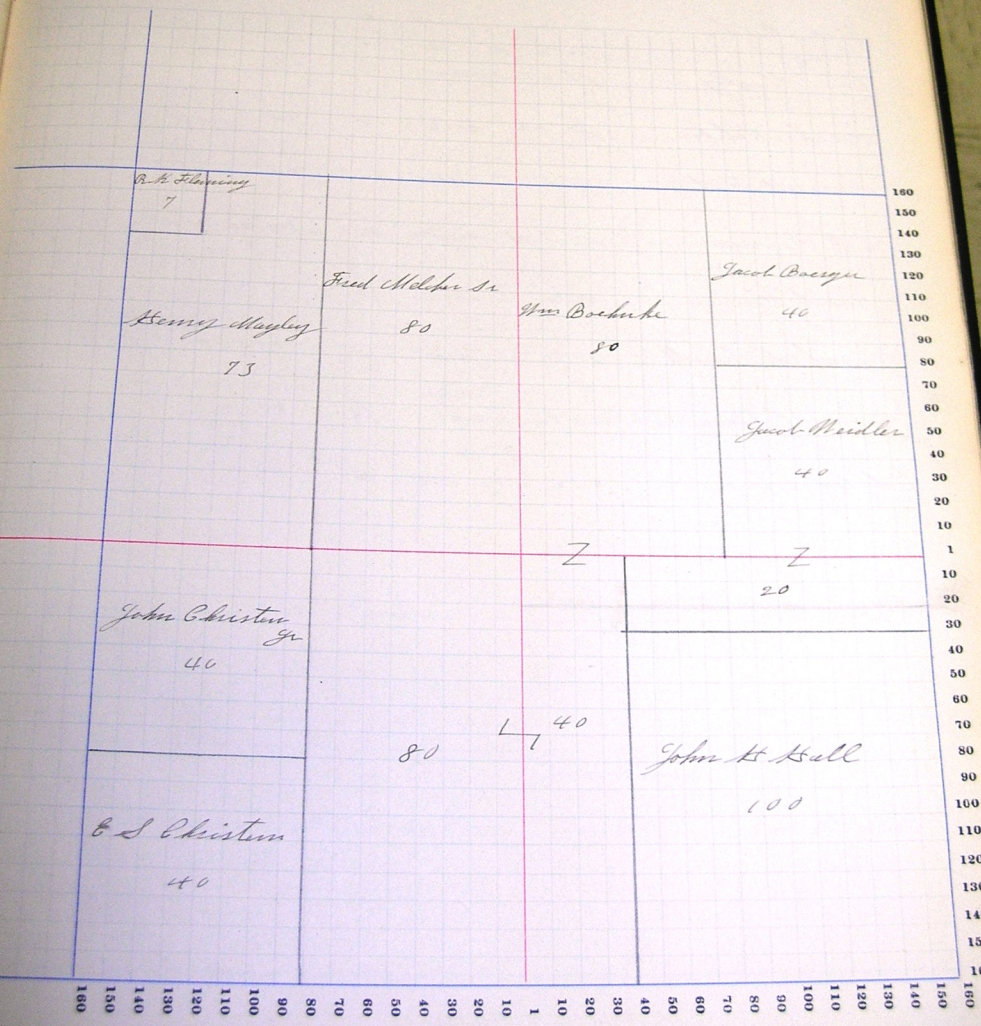
160
150
140
130
120
110
100
90
80
70
60
50
40
30
20
10
1
10
20
30
40
50
60
70
80
90
100
110
120
130
140
150
160

Value of land and improvements

SECTION No. 15

Congressional Township No. 28, R. 44

SCALE—Forty rods to an inch, or ten rods to a space, Congress Land, which is one mile square for a section.
Number of acres in this section, according to the United States Survey, 640



COUNTY, INDIANA, 1907.

Assessor's Plat-Book for

Township, No.

SP. & DISTRICT PLAT BOOK #72, GREENSBORO

NAMES OF OWNERS.	Number of Plat.	DESCRIPTION.	Section.	Township.	Range.	Acres.	Hundredths.	Value of Lands.	Value of Improvements.	Value of Lands and Improvements.
F. H. Christman	n	e	16			80				
Wm. Melber	s	e	16			80				
do	n	e	16			40				
Chas. Magley	pt	s	16			20				
Fred Melber	pt	n	16			40				
Samuel Fubman	n	w	16			40				
W. R. Fomer	sw	pt	16			57 40				
Jacob Fomer	n	e	16			77 40				
Frank McComell	s	e	16			75 50				
Yonas Cline	sw	e	16			80				
Ed Christen	s	e	16			40				

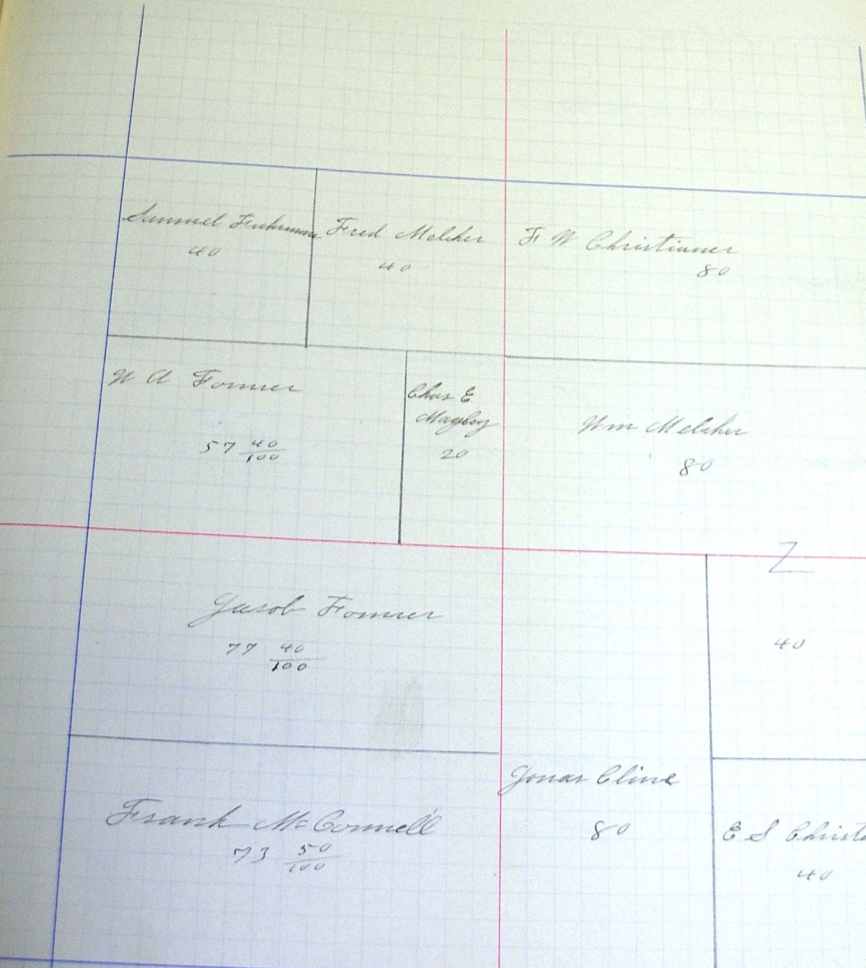
No. _____

SECTION No. 16

Congressional Township No. 28, R. 14

SCALE—Forty rods to an inch, or ten rods to a space, Congress Land, which is one mile square for a section.
Number of acres in this section, according to the United States Survey. 628 7/10

Value of
Lands and
Improvements



160
150
140
130
120
110
100
90
80
70
60
50
40
30
20
10
1
10
20
30
40
50
60
70
80
90
100
110
120
130
140
150
160

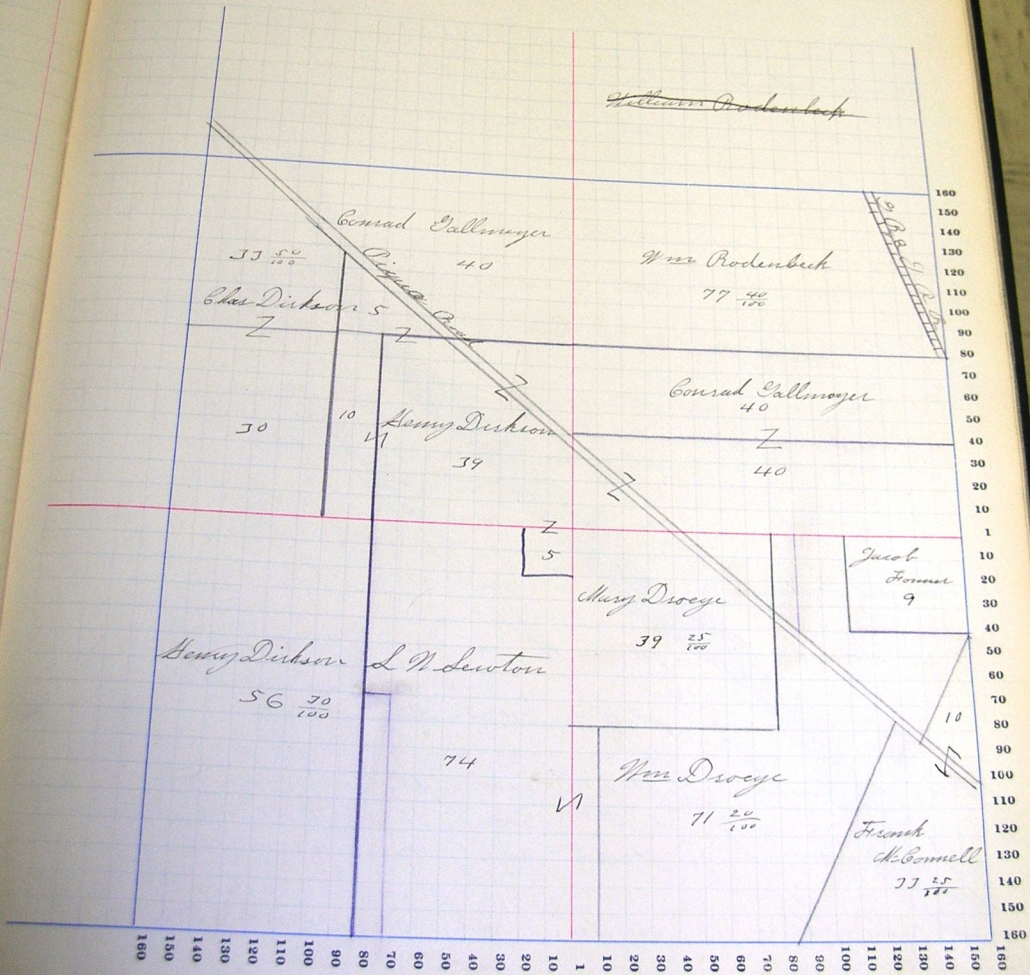
SECTION No. 17

Congressional Township No. 28, R. 14

SCALE—Forty rods to an inch, or ten rods to a space, Congress Land, which is one mile square for a section. Number of acres in this section, according to the United States Survey, 602 $\frac{40}{100}$

Value of improvements.

Value of lands and improvements.



COUNTY, INDIANA, 1907.

Assessor's Plat-Book for

Township, No.

NAMES OF OWNERS.	Number of Plat.	DESCRIPTION.	Section.	Township Range.	Acres.	Hundredths.	Value of Lands.	Value of Improvements.	Value of Lands and Improvements.
Henry Bunter		ne me	17		40				
oo		sfe me	17		72	80			
Henry Beckman		nw me	17		40				
oo		pt ne nw	17		30	79			
Wm Hoshemeyer		swfe	17		10	71			
oo		n pt nw			69	25			
oo		pt nw	17		27	32			
Charles Hoshemeyer		w 1/2 sw	17		79	32			
oo		pt nw	19		25	68			
oo		pt e 1/2 sw	17		2	80			
oo		ne cor w 1/2 nw	17			1			
Daniel Fushman		pt e 1/2 sw	17		73	20			
oo		pt w 1/2 se	17		15	50			
oo		pt lots 1-4-6	17			50			
Fred Hoshemeyer		pt e 1/2 sw	17			3			
oo		sw pt se	17			4	50		
oo		pt lots 1-4-6	17			43			
Char Dickson		ne fe se	17		47	37			
oo		sfe me	17			14			

ip. No.

SECTION No. 13

Congressional Township No. 28, R. 14

SCALE—Forty rods to an inch, or ten rods to a space, Congress Land, which is one mile square for a section.
Number of acres in this section, according to the United States Survey, 656 2/3

