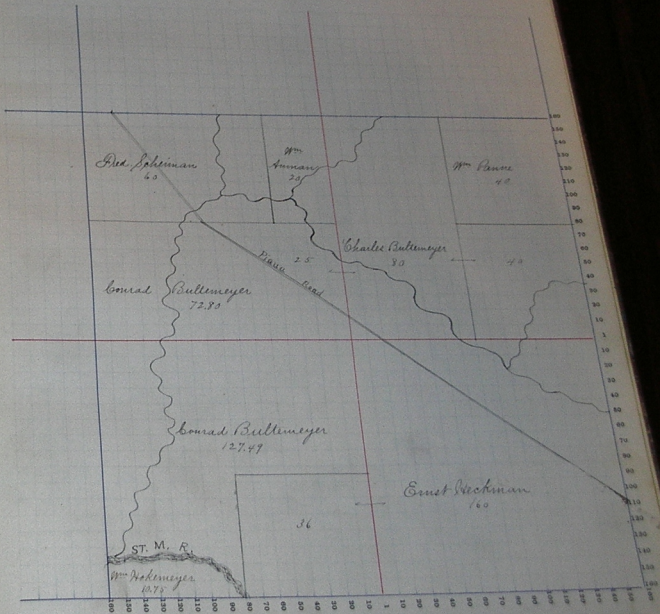


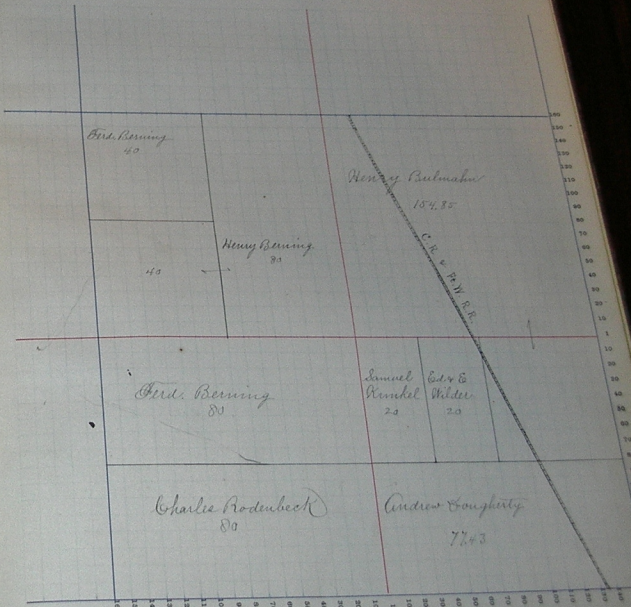
NAMES OF OWNERS.	Number of Pcs.	DESCRIPTION.	Section.	Township Range.	Acres.	Value of Land.	Value of Improvements.	Value of Land and Improvements.
Ernst Neckman		S.E.	7	31	160	1770	1425	3295
		N.W.	7	-	56	432		432
Charles Bullmeyer		N.E.	7	-	84	825	300	1125
		N.E.	7	-	84	415	70	485
		N.W.	7	-	35	300	100	400
W. Hoke Meyer		S.W. 1/4	7	-	1675	100		100
W. Panne		N.E.			40	400	45	445
Erd. Spelman		W 1/2 N 1/4			60	750	90	840
W. Homan		E 1/2 N.E.			20	240		240
Conrad Bullmeyer		N.W. 1/4			72.80	925	120	1045
		N.W. 1/4			127.47	1400	300	1700

Scale—Forty rods to an inch, or ten rods to a space, Congress Land, which is one mile square for a section. Number of acres in this section, according to the United States Survey.



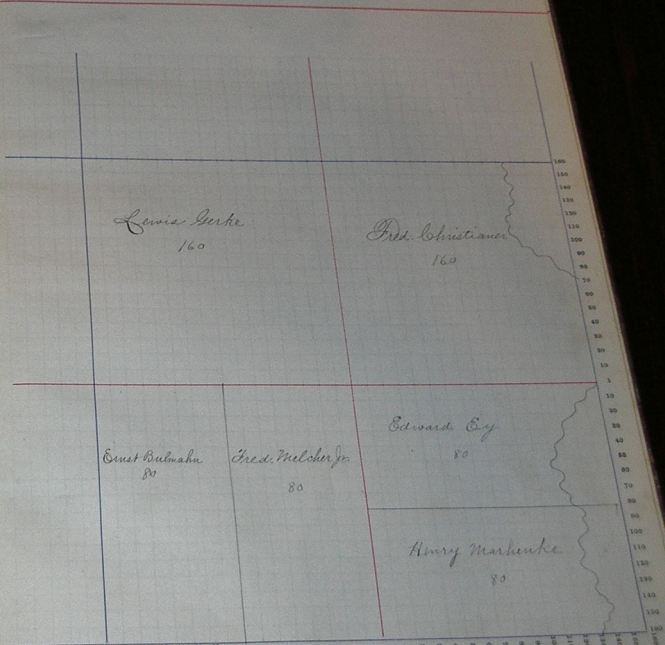
Scale—Forty rods to an inch, or ten rods to a space, Congress Land, which is one mile square for a section.
Number of acres in this section, according to the United States Survey.

NAMES OF OWNERS.	Number of Pts.	DESCRIPTION.	Sections.	Township.	Range.	Acres.	Value of Lands.	Value of Improvements.	Value of Lands and Improvements.
Charles Rodenbeck	1/2	S.W.	7	28	19	80	92.5	3.00	123.0
Andrew Boughtly	1/2	S.E.	8	-	-	77.43	78.5	3.50	113.0
Henry Bulmahn	1/2	N.W.	5	-	-	154.35	184.0	73.5	227.0
do	1/2	S.E.	8	-	-	38.72	40.0	2.50	62.0
Henry Bering	1/2	N.W.	8	-	-	79.17	82.5	3.00	112.0
do	1/2	S.W.	8	-	-	40	40.0	4.50	85.0
Ferdinand Bering	1/2	S.W.	8	-	-	30	34.0	6.60	149.0
do	1/2	N.W.	8	-	-	40	44.0	9.0	53.0
Samuel Kunkel	1/2	N.W.	8	-	-	20	2.00		2.00
E. C. Wilder	1/2	N.W.	8	-	-	20	18.0		18.0



Scale—Forty rods to an inch, or ten rods to a space, Congress Land, which is one mile square for a section.
Number of acres in this section, according to the United States Survey.

NAMES OF OWNERS.	Number of Pk.	DESCRIPTION.	Section.	Township.	Range.	Acres.	Hundredths.	Value of Land.	Value of Improvements.	Value of Land and Improvements.
<i>E. H. Melcher</i>	<i>81</i>	<i>S.W. 7 187</i>	<i>80</i>					<i>730 500</i>	<i>10 3 0</i>	
<i>Henry Markenke</i>	<i>81</i>	<i>S.E. 7 - -</i>	<i>80</i>					<i>750 460</i>	<i>12 5 0</i>	
<i>Edward Ey</i>	<i>15</i>	<i>S.E. 7 - -</i>	<i>80</i>					<i>780 230</i>	<i>10 1 0</i>	
<i>Lewis Gerke</i>		<i>N.W. 9 - -</i>	<i>160</i>					<i>1600 420</i>	<i>20 7 0</i>	
<i>Fred. Christianer</i>		<i>N.E. 9 - -</i>	<i>160</i>					<i>1650 650</i>	<i>23 0 0</i>	
<i>Ernst Paulmahn</i>	<i>14</i>	<i>S.W. 9 - -</i>	<i>80</i>					<i>825 500</i>	<i>13 2 5</i>	



Assessor's Plat-Book for

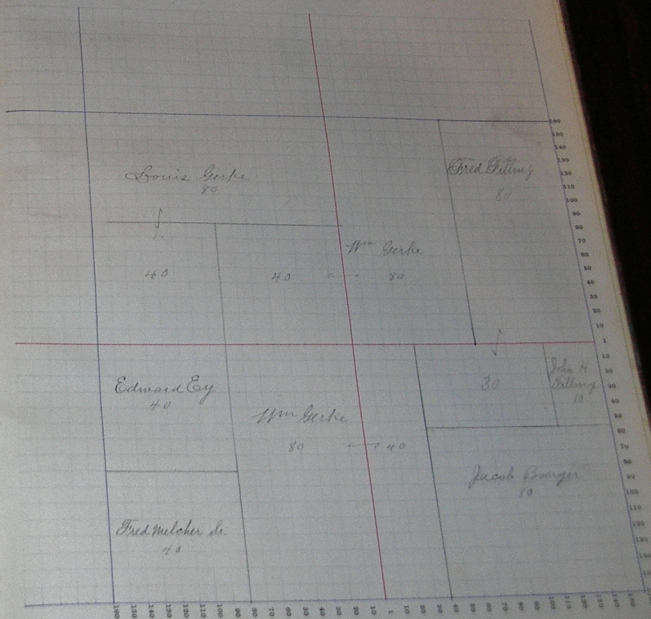
Township, No.

Congressional Township No.

R.

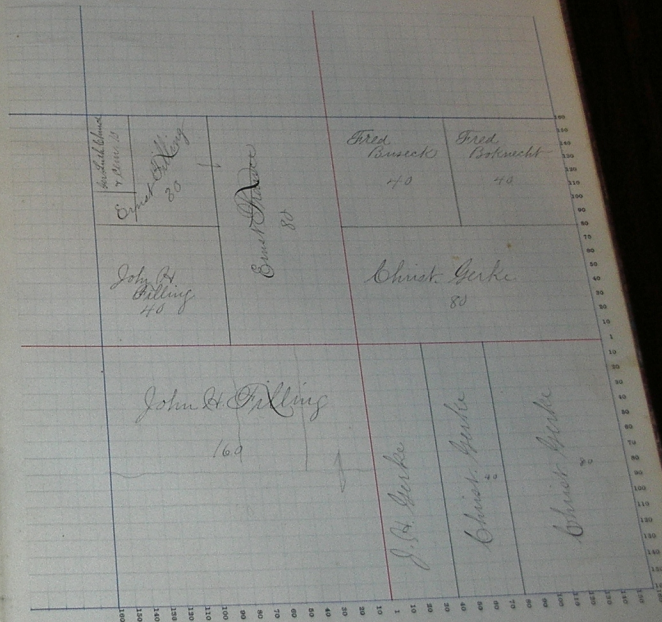
NAMES OF OWNERS.	Number on Plat.	DESCRIPTION.	Section.	Township.	Range.	Acres.	Hindcasts.	Value of	Value of	Value of
								Land.	Improvements.	Land and Improvements.
Fred Pittling	SE	NE	10	28	4	80	840	500	1340	
do	NE	SE	10	-	-	80	315	-	315	
John H. Pittling	NE	SE	10	-	-	10	100	-	100	
Jacob Bourger	SE	SE	10	-	-	80	840	470	1310	
Edward Coy	NW	SW	10	-	-	40	420	260	680	
Louis Gerke	N	NW	10	-	-	80	810	1840	1850	
do	SW	NW	10	-	-	40	420	130	550	
J. S. W. Gerke	SE	SW	10	-	-	80	880	470	1350	
do	NE	SE	10	-	-	40	440	420	860	
do	SE	NW	10	-	-	40	400	120	520	
do	N	NE	10	-	-	80	780	100	880	
Fred Melcher Sr.	SW	SW	-	-	-	40	400	80	480	

Scale—Forty rods to an inch, or ten rods to a space, Congress Land, which is one mile square for a section.
Number of acres in this section, according to the United States Survey.



NAMES OF OWNERS.	Number of Pts.	DESCRIPTION.	Acres.		Value of Land.	Value of Improvements.	Value of Land and Improvements.
			Section.	Range.			
Fred Busck		N.W. N.E.	25	40	405	230	640
Fred Busck		N.E. N.E.	40	40	400	220	625
J. Henry Gerke		W. W. S.E.	40	40	420	30	450
Christ Gerke		N.E. N.E.	80	80	832	420	1257
El. S.E.		N.E. N.E.	80	80	825	30	855
El. S.E.		E. W. S.E.	40	40	420	10	430
John H. Billing		S. W. S.W.	160	40	1690	850	2530
Ernest Trauer		E. N.W. N.W.	80	30	820	370	1190
Ernest Trauer		E. pt. N.W. N.W.	30	30	318	150	465
Wm. Knapp							

Scale—Forty rods to an inch, or ten rods to a span, Congress Land, which is one mile square for a section. Number of acres in this section, according to the United States Survey.



Scale—Forty rods to an inch, or ten rods to a space, Congress Land, which is one mile square for a section.
Number of acres in this section, according to the United States Survey.

NAMES OF OWNERS.	Section or Plat	DESCRIPTION.	Acres.	Value of Land.	Value of Improvements.	Value of Land and Improvements.
Thomas & Anne	E 1/2	S.E.	72 23/4	840	600	1440
Sylvester Wolf		S.E.	72 - -	1680	420	2100
Catherine Mumma	E 1/2 W 1/2	S.E.	72 - -	420	300	720
Emily Mumma	E 1/2 W 1/2	S.E.	72 - -	140	20	160
Wm Knapp	W 1/2	N.W.	72 - -	840	460	1300
	N 1/2	S.W.	72 - -	840	30	870
Christian Bucher	W 1/2 E 1/2	N.W.	72 - -	420	200	620
Fred Knapp	E 1/2 E 1/2	N.W.	72 - -	420	250	670
Elsa J. Blaine	N 1/2 W 1/2	S.E.	72 - -	1333	140	1470
Wm Kuefelhofer	S 1/2	S.W.	72 - -	80	780	860
Nancy E. Blaine	W 1/2 W 1/2	S.E.	72 - -	1333	140	1470

