

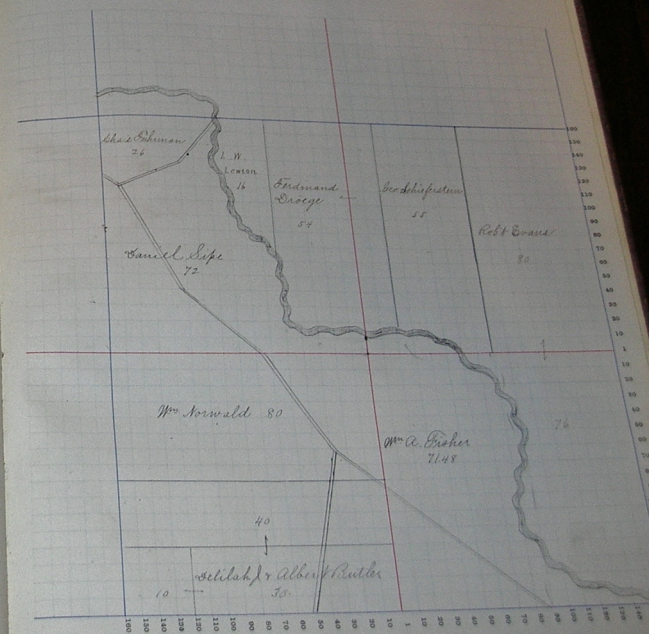
NAMES OF OWNERS.	Section or Pl.	DESCRIPTION.	Section.	Tract.	Range.	Acres.	Homestead.	Value of Land.	Value of Improvements.	Value of Land and Improvements.
Wm. Meeks	W/2	S.W. 11	11	11	11	77.51	77.51	2.00	77.51	
Matilda Reed	W/2	S.W. 11	11	11	11	3.5	3.5		3.5	
John Rice	W/2	S.W. 11	11	11	11	73.54	73.54	1.00	103.0	
Christian Langerbacher	N/2 S.E.	S.E. 11	11	11	11	2.0	2.00	3.0	2.30	
James Mallonee	1/4 S.W. E.L.	S.W. 11	11	11	11	2.2	2.20		65.0	
Jacob Sprugler	1/4 S.W. E.L.	S.W. 11	11	11	11	5.0	5.00	2.50	75.0	
Wm. P. Mallonee	E 1/4 W.	S.E. 11	11	11	11	30	500	1.00	600	
Joseph C. Mann	1/4 N.E. E.L.	S.W. 11	11	11	11	4	440	28.0	92.0	
Abby Mann	1/4 N.E.	S.E. 11	11	11	11	2.0	2.00		2.00	
Coat Book	S.E.	S.E. 11	11	11	11	4.0	400	150	550	
Charles Burkman	E.L.	N.E. 11	11	11	11	80	960	75	1035	

Scale—Forty rods to an inch, or ten rods to a space, Congress Land, which is one mile square for a section. Number of acres in this section, according to the United States Survey.



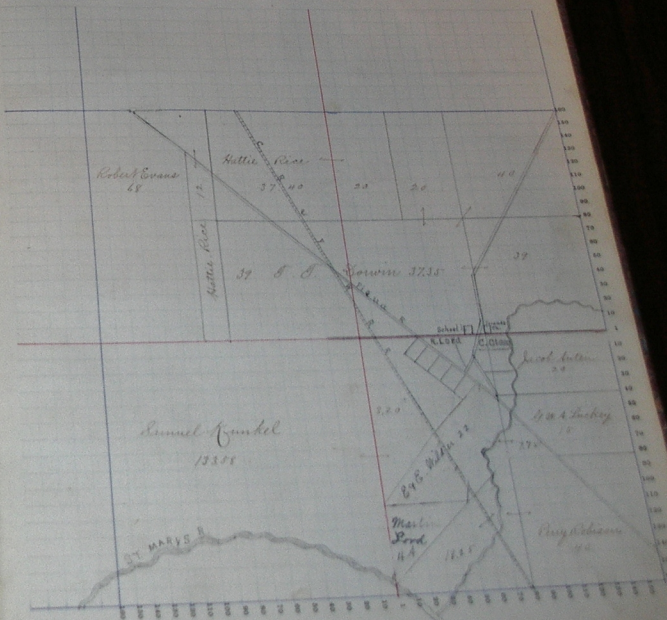
Scale—Fifty rods to an inch, or ten rods to a space. Congress Land, which is one mile square for a section.
Number of acres in this section, according to the United States Survey.

NAMES OF OWNERS.	Number of Acs.	DESCRIPTION.	Sections.	Tract.	Acres.	Value of Land.	Value of Improvements.	Value of Land and Improvements.
George Schipstein	E. 1/4	S.E.	22	21 1/4	55	575	170	745
L. W. Linton	E. 1/4	N.W.	22	-	16	160	35	195
W. B. Fisher	S. 1/4	S.E.	-	-	71 1/4	765	100	865
W. Norwald	N	S.W.	-	-	90	900	120	1020
Samuel Sipe	N	N.W. 1/4	-	-	72	720	100	820
Chas. Guhrman	N. 1/4	S.W.	-	-	26	260	100	360
Ferdinand George	E. 1/4 1/2	N. 1/4 S.E. 1/4	-	-	54	610	125	735
Sallah & Albert Butler	S	S.W.	-	-	80	800	175	975
Robert Crane	E. 1/4	S.E.	-	-	76	720	175	895
	S. 1/4	S.E.	-	-	80	1180	100	1280



NAMES OF OWNERS.	Number of the Township.	DESCRIPTION.	Acres.	Value of Land.	Value of Improvements.	Value of Land and Improvements.
Samuel Kunkel	21	SW 1/4	133.53	1700	4300	2350
do		pt NW 1/4	8.20	120		130
do			20	300		300
Jacob Asten		lots 21, 22, 24, 27	4	60	20	120
do		pt SE 1/4	30	10		30
Martin Ford		pt NW 1/4	25	10		10
Katharine Chase		pt NE 1/4	30	10	10	10
Mary Numbers		pt NW 1/4	30	10	10	10
Colosse Numbers		pt NW 1/4	29.75	450	600	900
E & C Wilder		pt SE 1/4	40	400	200	600
Benj Robison		SE 1/4	19.20	200		300
do		pt NW 1/4	15	220	300	420
George W. A. Luchey		pt NW 1/4	25	10	300	600
W. H. Watts		lot 17	50	20	30	60
B. J. Mubers		lot 15	2	20	10	30
M. Brandstiff		lot 5 + 6	25	10	20	30
John Ford		pt NW 1/4	8	130	150	280
E. T. Robinson		lot 1, 2, 3, 21, 26, 27 + 28	70	10	20	40
do		SE 1/4	53	10	70	50
Subana W. Chan		lot 18	10	40		50
George W. Chan		pt NW 1/4	29	1070	530	1600
Robert Evans		NE 1/4	27.00	500	370	970
do		W. NW 1/4	20	240		240
do		pt NW 1/4	12	190	20	210
J. J. Sorwin		SE 1/4	77	1200	180	1380
do		SW 1/4	37.30	570	350	920
do		SE 1/4	37	600	30	630

Scale—Forty rods to an inch, or ten rods to a space, Congress Land, which is one mile square for a section. Number of acres in this section, according to the United States Survey.



Assessor's Plat-Book for

Township, No.

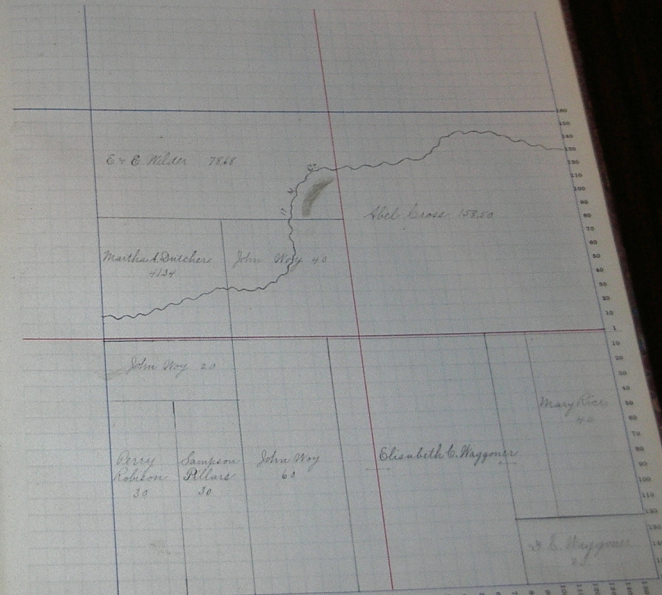
SECTION No. 22

Congressional Township No.

R.

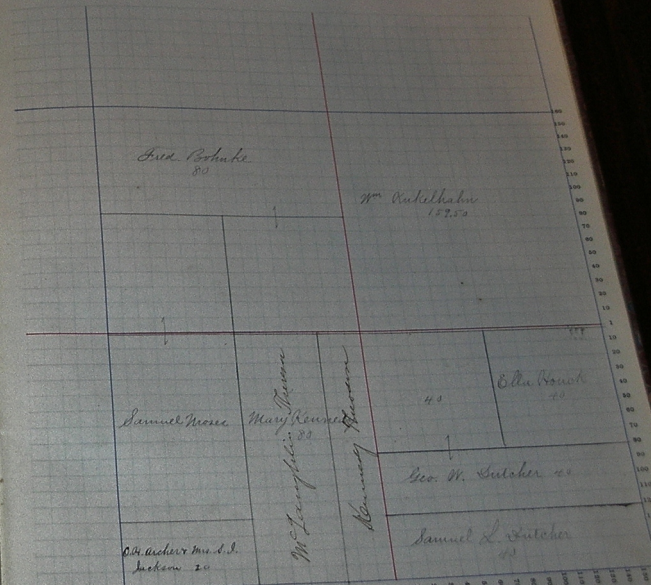
Scale—Forty rods to an inch, or ten rods to a space, Congress Land, which is now well square for a section.
Number of acres in this section, according to the United States Survey.

NAMES OF OWNERS.	Number of Pts.	DESCRIPTION.	Towns.		Acres.	Homestead.	Value of Land.	Value of Improvements.	Value of Land and Improvements.
			North.	Range.					
Abel Cross		N.E.	22	W	151.50	2110	470	2570	
Martha Dutcher	S.W.	N.W.	20	-	41.34	500	400	900	
Abel Waggoner	S.E.	S.E.	-	-	20	280	75	355	
Elizabeth Waggoner	W. 1/2	S.E.	-	-	80	1090	520	1610	
do	E. 1/2 E. 1/2	S.W.	-	-	20	280	-	280	
do	W 1/2 E 1/2	S.E.	-	-	20	280	-	280	
Perry Robinson	S.W. 1/4	S.W.	-	-	30	480	100	580	
Mary Rice	E. 1/2 E. 1/2	S.E.	-	-	40	500	50	550	
E. & C. Wilder	1/2	N.W.	-	-	78.61	900	900	1800	
John Woy	W 1/2 E 1/2	S.W.	-	-	40	820	400	1220	
do	S.E.	N.W.	-	-	40	500	50	550	
do	W 1/2 W 1/2	S.W.	-	-	20	260	45	305	
Sampson Allare	W 1/2	S.W.	-	-	30	420	50	470	



Scale—Forty rods to an inch, or ten rods to a space, Congress Land, which is one mile square for a section. Number of acres in this section, according to the United States Survey.

NAMES OF OWNERS.	DESCRIPTION.	Section	Township	Range	Acres	Hh.	Value of Lands.	Value of Improvements.	Value of Lands and Improvements.
Jud. Bohake	N. 1/2 S. 1/2	1 W.	22 N.	19 E.	120	1370	770	2160	
Samuel Moore	S. 1/2	1 W.			40	430	110	540	
Mary Kennedy	1/4 S. 1/2	1 W.			20	270	500	1270	
Edna Bouch	E. 1/2	1 W.			80	1700	150	1850	
Samuel S. Satcher	N. 1/2	S. 1/2			40	430	200	630	
George Satcher	S. 1/2	S. 1/2			40	430	170	600	
Wm. Kukulhan		N. 1/2			159	521	500	2000	
Orlander Mrs. S. Jackson	S. 1/4 W. 1/4	S. 1/2			25	260	100	360	



NAME OF OWNER.	Number on Plat	DESCRIPTION	Section	Township	Range	Acres	Hundredths	Value of Land	Value of Improvements	Value of Land and Improvements
John Brouette		N.E. N.E.	24	18	40	40	300	70	10	10
		N.W. N.W.	24	18	18	200	20	200	200	200
Martin L. Mumma		N.E. N.W.	18	18	2	27			20	
J. W. Hammond		N.W. S.E.			9	60			60	
David Leman		S.W. S.E.			55	580	300		880	
John B. Hammond		N.W. N.E.	4		4	45			40	
James Ross		S.W. S.E.	4		4	45			40	
R. Warner (heir)		S.W. N.E.	40		40	400	120		520	
Charles Brook		N.W. N.E.	20		20	200	30		230	
Howard W. Shackley		N.W. S.E.			80	840	230		1070	
Robt. A. Hammond		Mid. N.W. S.E.	20		20	220	60		280	
do		N.W. S.E.	2		2	20	100		120	
Mary Hammond		N.W. S.E.	23		23	250	120		370	
do		N.W. S.E.	4		4	40			40	
John M. Brown		N.W. N.W.	20	50	225	40			265	
John R. Peoples		N.W. N.W.	19		210	40			250	
Joseph Ullman		N.W. N.W.	80		820	175			995	
do		N.W. S.W.	20		210	40			250	
Mathias Ullman		N.W. N.W.	80		900	100			1000	
do		N.W. S.W.	60		685	780			1465	
John A. Mumma		Mid. N.W. N.W.	40	50	390	100			490	

Scale—Forty rods to an inch, or ten rods to a corner, Congress Land, which is one mile square for a section. Number of acres in this section, according to the United States Survey.

