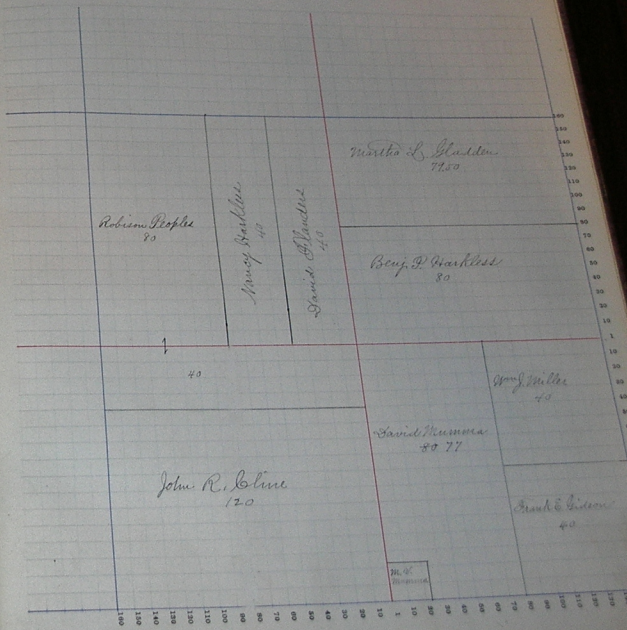


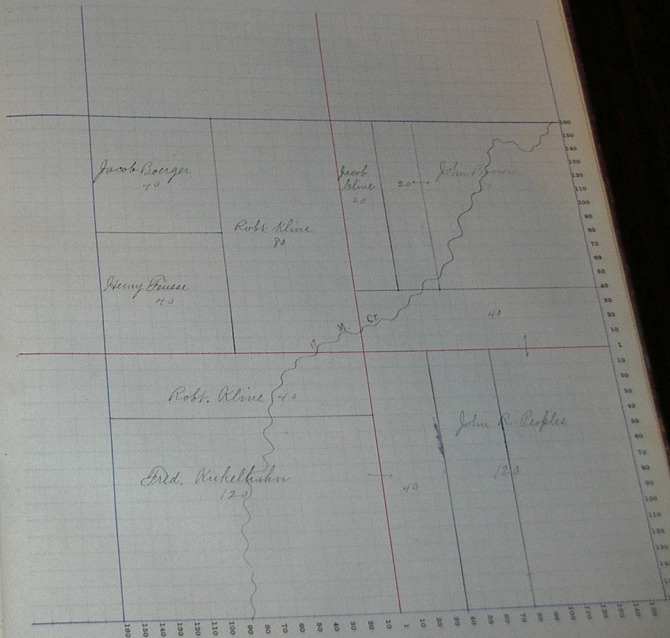
NAMES OF OWNERS.	Section	Range	Acres.	Value of Land.	Value of Improvements.	Value of Land and Improvements.
Martin & Mumma	S.E.	72	3	35	70	105
David Mumma	N.W.	40	440	80	520	
Marta L. Gladden	N.E.	77	87	255	560	1415
Nancy Brackless	N.W.	40	440	200	640	
David Mumma	S.E.	77	760	320	1080	
Sam & E. Gibson	S.E.	40	300	300	600	
Benj. P. Brackless	N.E.	80	875	200	1075	
Wm. J. Miller	S.E.	40	440	100	540	
Robison Peoples	N.W.	80	865	500	1365	
do	N.W.	40	430	100	530	
John R. Coline	S.W.	80	855	600	1455	
do	S.W.	40	430	120	550	

Scale—Forty rods to an inch, or ten rods to a space, Congres Land, which is one mile square for a section.
Number of acres in this section, according to the United States Survey.



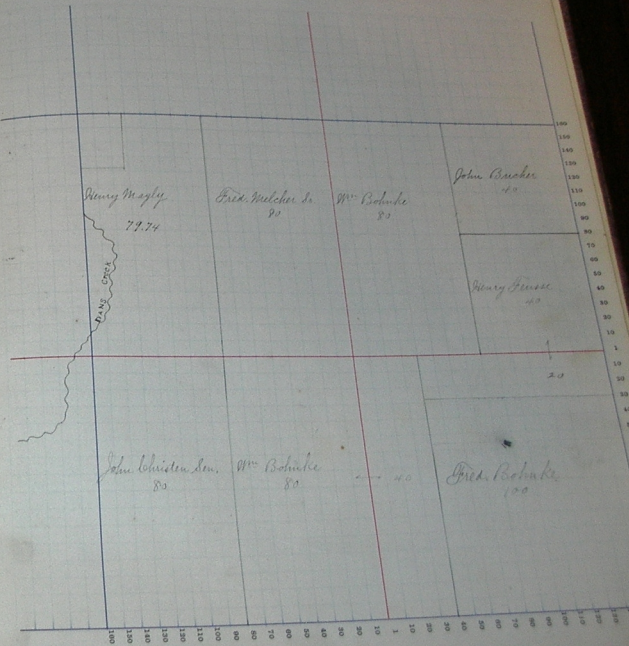
NAMES OF OWNERS.	Number on Plat.	DESCRIPTION.	Section.	Township.	Range.	Acres.	Value of Lands.	Value of Improvements.	Value of Lands and Improvements.
Jacob Berger	AH	NW	4	21	14	40	440	170	430
John R. Peoples	EL	SE				80	820	450	1270
Do	EL	W/2				40	430	120	550
Do	SH	NE				40	440		440
Fred Kikelshon	SL	SW				80	750	430	1180
Do	SL N/2	SW				40	415	135	540
Do	W/2 W/2	SE				40	420	170	520
Jacob Klime	pl. W/2	NE				20	220	50	280
John Brown Jr.	pl	NE				100	1030	380	1410
Robert Klime	EL	NW				80	870	400	1320
Do	N/2 N/2	SW				40	420	140	560
Henry Douse	SH	NW				40	430	120	550

Scale - Forty rods to an inch, or ten rods to a space, Congress Land, which is one mile square for a section. Number of acres in this section, according to the United States Survey.



NAMES OF OWNERS.	Number of Plats.	DESCRIPTION.	Section.	Township.	Range.	Acres.	Hundredths.	Value of Land.	Value of Improvements.	Value of Land and Improvements.	
Fred Bobbick	16	SE. 1/4	18	39	29	120	85	500	115	50	
John Brasher	16	NE	18			40	42	5160	58	50	
Henry Bussie	16	NE	18			40	43	530	76	0	
do	14	SE	18			20	22	50	27	0	
Fred Mulcher Sr	8	SW	18			80	86	560	142	0	
Wm Bobbick	1/2	NE	18			80	85	920	177	0	
do	1/2	SW	18			80	76	275	103	5	
do	1/2	SE	18			40	40	45	44	5	
Henry Magley	1/2	SW	18			77	74	800	390	119	0
John Christen Sen.	1/2	SW	18			80	84	225	106	5	

Scale—Forty rods to an inch, or ten rods to a space, Congress Land, which is one mile square for a section.
Number of acres in this section, according to the United States Survey.



Assessor's Plat-Book for

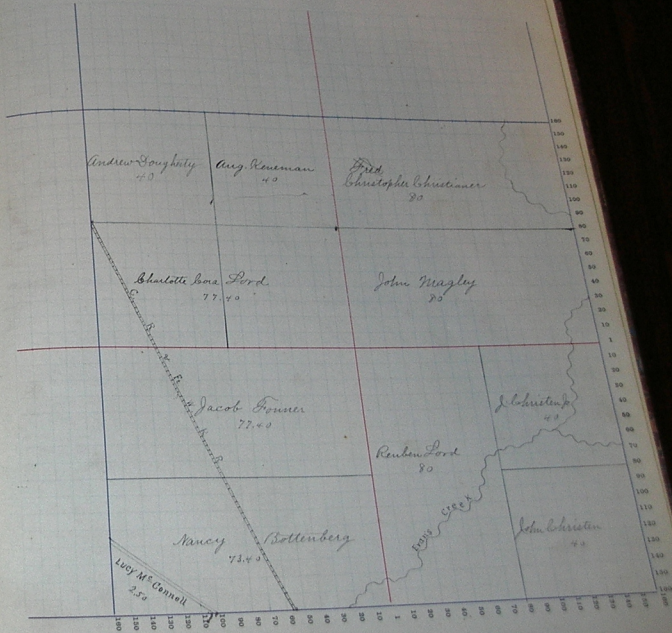
Township No.

Congressional Township No.

3.

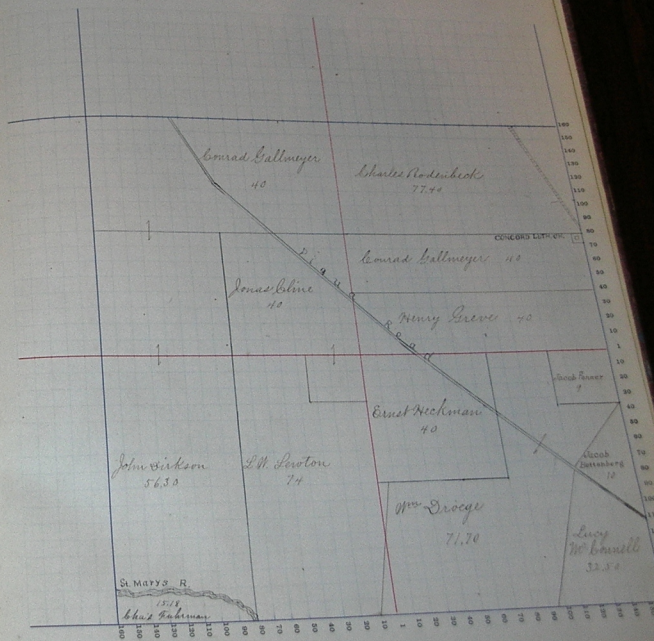
NAMES OF OWNERS.	Acres on Plat.	DESCRIPTION.	Section.	Township Range.	Acres.	Homestead.	Value of Land.	Value of Improvements.	Value of Land and Improvements.
August Kneemann	16	NW	2	23	40		170	230	400
Andrew Dougherty	16	NW	16		40		420	80	500
Reuben Ford	17 1/2	SE			80		580	220	800
Charlotte Cox Ford	17 1/2	NW			27 1/2		875	200	1075
Lucy McConnell	25	SW			2 1/2		30		30
John Magley	80	NE			80		860	330	1190
Christopher Christman	80	NE			80		880	250	1130
Jacob Finner	77 1/2	SW			77 1/2		910	200	1110
Nancy Bollenberg	73 1/2	SW			73 1/2		900	200	1100
John Christman	40	SE			40		425	500	925
John Christman Jr	40	SE			40		400	250	650

Scale—Forty rods to an inch, or ten rods to a space, Congress Land, which is one mile square for a section.
Number of acres in this section, according to the United States Survey.



Scale—Forty rods to an inch, or ten rods to a space, Congress Land, which is one mile square for a section.
Number of acres in this section, according to the United States Survey.

NAMES OF OWNERS.	Section or Plat.	DESCRIPTION.	Acres.	Value of Land.	Value of Improvements.	Value of Land and Improvements.
Charles Rutenbeck	N.E.	16	77.40	822	220	1042
Ernst Nechman	S.E.	11	40	480	200	680
Lucy W. Cornwell	pt. S.E.	S.E.	32.37	400	120	520
L. W. Swinton	W. pt. S.E.	S.W.	39	440	150	590
	W. pt. S.E.	S.W.	35	325	70	395
Chas. Fuhrman	S.E.	S.W.	15.18	180		180
John Dickson	W.	N.W.	80	1040	1700	2740
	W. pt.	S.W.	56.30	680	120	800
Conrad Gallmeyer	E. pt. W.	N.W.	40	495	210	705
	W. pt. S.E.	N.E.	40	520	60	580
Jonas Blum	S.E.	N.W.	40	500	220	720
	N.E. cor. W.	S.W.	5	65		65
Wm. Droge	pt. S.E. & pt.	S.W.	71.70	920	400	1320
Jacob Trimmer	N.E. cor.	S.E.	9	100	150	250
Henry Greve	S. pt. S.E.	N.E.	40	520	285	805



Assessor's Plat-Book for

Township, No.

Congressional Township No.

R.

Scale—Forty rods to an inch, or ten rods to a space, Congress Land, which is one mile square for a section.
Number of acres in this section, according to the United States Survey.

NAMES OF OWNERS.	Number of Poles	DESCRIPTION.	Sections.	Township Range.	Acres.	Homestead.	Value of Lands.	Value of Improvements.	Value of Lands and Improvements.	
Ernst Neckman	14	1/4	16	33 1/4	41	480	75	550		
1/2	14	1/4	16	33 1/4	77	360	110	470		
Wm. Neckmeyer	14	1/4	16	33 1/4	77	670	225	915		
Anon Neckmeyer	14	1/4	16	33 1/4	77	470	60	530		
Charles Neckmeyer	14	1/4	16	33 1/4	77	32	790	300	1090	
Charles Eukman	14	1/4	16	33 1/4	77	90	11675	2200	575	2875
John Burkson	14	1/4	16	33 1/4	77	40	520	60	580	
1/2	14	1/4	16	33 1/4	77	8680	990	200	1190	
1/2	14	1/4	16	33 1/4	77	4737	470	150	620	

