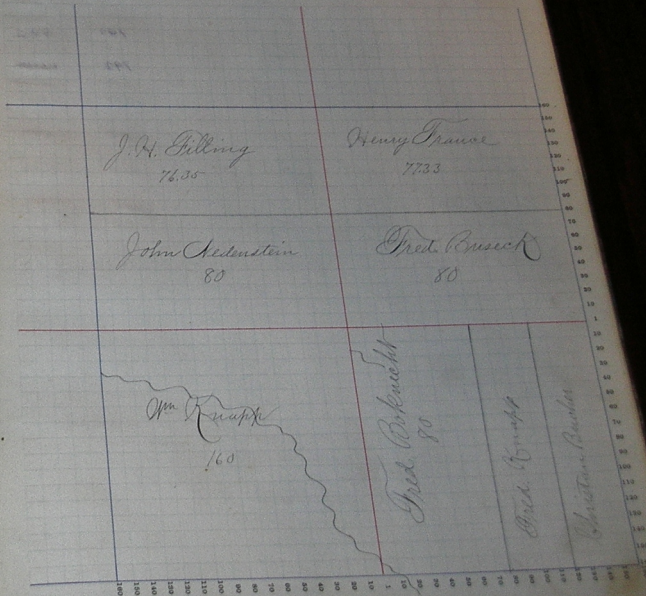


Scale—Forty rods to an inch, or ten rods to a cent. Congress Land, which is one mile square for a section. Number of acres in this section, according to the United States Survey, 437.11.

NAMES OF OWNERS.	Number of the	DESCRIPTION.	Section	Township	Range	Acres	Value of Land.	Value of Improvements.	Value of Land and Improvements.
<i>Henry France</i>		<i>N. E.</i>	<i>1564</i>	<i>77</i>	<i>35</i>	<i>688</i>	<i>270</i>	<i>963</i>	
<i>Fred. Borknack</i>		<i>W. S. E.</i>	<i>1</i>	<i>80</i>		<i>792</i>	<i>338</i>	<i>1130</i>	
<i>Fred. Brossack</i>		<i>S. E.</i>	<i>1</i>	<i>80</i>		<i>792</i>	<i>200</i>	<i>992</i>	
<i>John Madenstone</i>		<i>S. W.</i>	<i>1</i>	<i>80</i>		<i>792</i>	<i>400</i>	<i>1192</i>	
<i>John H. Dilling</i>		<i>W. W.</i>	<i>1</i>	<i>80</i>		<i>760</i>		<i>760</i>	
<i>Wm. Knapp</i>		<i>S. W.</i>	<i>1</i>	<i>160</i>		<i>1575</i>	<i>575</i>	<i>2150</i>	
<i>Christian Bueker</i>	<i>E. &amp; E.</i>	<i>S. E.</i>	<i>1</i>	<i>40</i>		<i>380</i>	<i>170</i>	<i>550</i>	
<i>Fred. Knapp</i>	<i>W. &amp; E.</i>	<i>S. E.</i>	<i>1</i>	<i>40</i>		<i>400</i>	<i>118</i>	<i>518</i>	

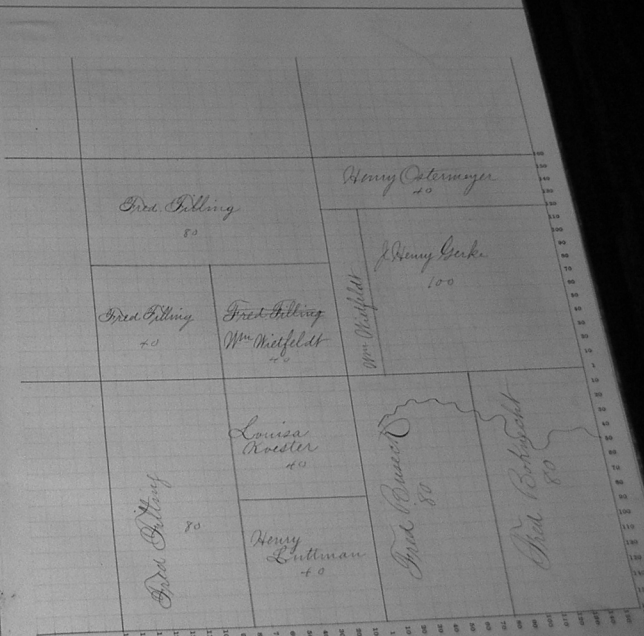
*437.11 4177 2060 8237*



Assessor's Plat-Book for

NAMES OF OWNERS.	Number on Plat	DESCRIPTION.	Section.	Township Range.	Acres.	Hundredths.	Value of	Value of	Value of
							Land.	Improvements.	Land and Improvements.
Fred Busck	W <sub>1/2</sub>	S.E.	2	34	80		792	400	1242
Fred Coburn	E <sub>1/2</sub>	S.E.	2	"	80		775	400	1225
J. Henry Gerke	E <sub>1/2</sub>	N.E.	2	"	100		985	400	1385
Fred Filling	N <sub>1/2</sub>	N.W.	2	"	80		800	400	1200
do	S.W.	N.W.	2	"	40		400		400
do	W <sub>1/2</sub>	S.W.	2	"	80		800	40	845
Henry Luttman	S.E.	S.W.	2	"	40		322	220	612
Louisa Rooster	N.E.	S.W.	2	"	40		400	100	500
Wm. Wisfeldt	S.E.	N.W.	2	"	40		360	190	555
do	S.W.	N.E.	2	"	20		180		180
Henry Ostermeyer	N <sub>1/2</sub> W <sub>1/2</sub>	N.E.	2	"	40		380	150	530

Scale—Forty rods to an inch, or ten rods to a space, Congreg Land, which is one mile square for a section. Number of acres in this section, according to the United States Survey.



Assessor's Plat-Book for

Township, No.

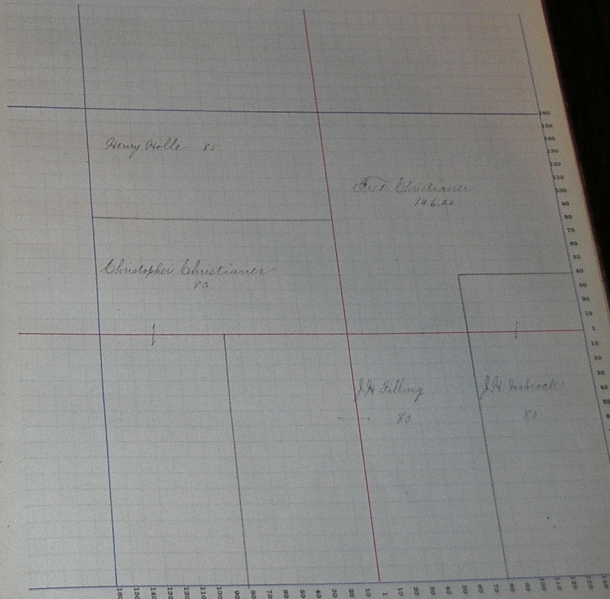
SECTION No. 3

Congressional Township No.

R.

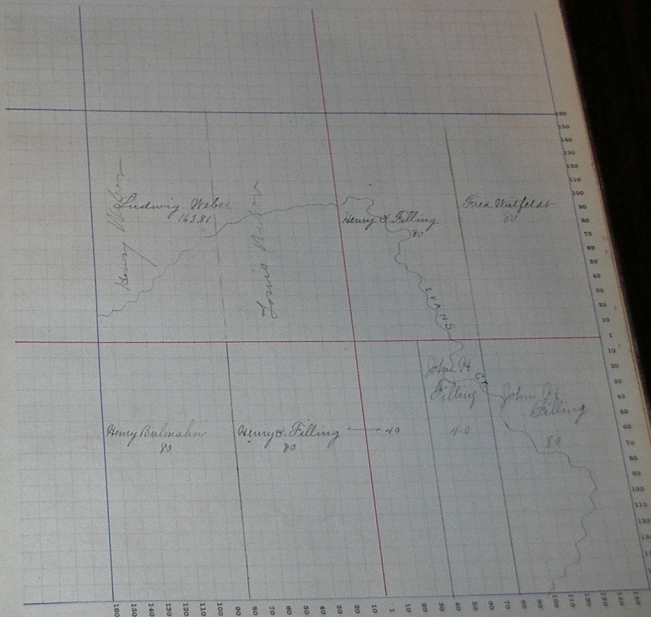
Scale-Fifty rods to an inch, or ten rods to a space, Congress Land, which is one mile square for a section.  
Number of acres in this section, according to the United States Survey.

NAMES OF OWNERS.	Number of Plats.	DESCRIPTION.	Section Township Range.	Acres.	Homestead.	Value of Land.	Value of Improvements.	Value of Land and Improvements.
W. S. Brock	2	SE 1/4	3 22 24	80		800	800	1600
do	1	SE 1/4	3 - -	20		185		185
John H. Filling	1	SW	3 - -	80		800	120	920
do do	1	SW	3 - -	80		800	170	970
Frederick Christianer	1	NE	3 - -	146.20	1430	76	1300	
Henry Welle	1	SW	- - -	85		850	250	1100
Christopher Christianer	1	SW	- - -	79.50	770	450	1200	
do	1	SW	- - -	80		800	50	850



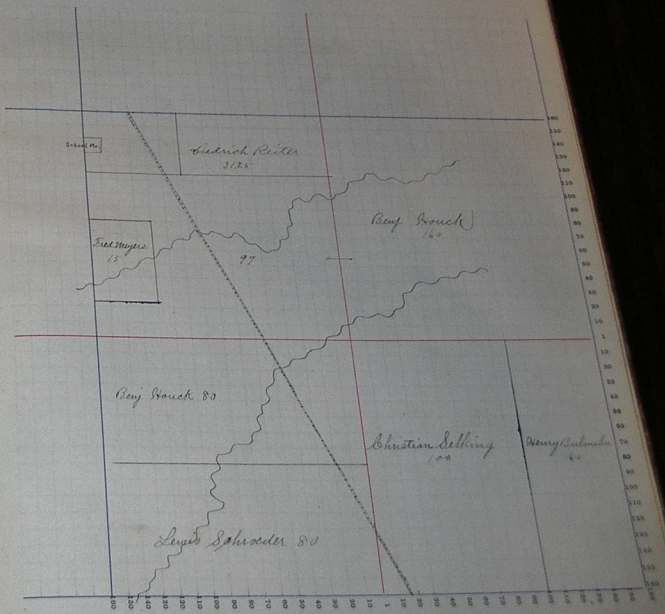
NAMES OF OWNERS.	Number of Pk.	DESCRIPTION.	Section.	Acres.	Value of Lands.	Value of Improvements.	Value of Lands and Improvements.
John B. Young 150	Ex. S.E.	30	50	800	110	1215	
	Ex. W. S.E.	40	40	400	60	460	
Henry Bulwahn	W. S.W.	30	30	800		800	
Free Willfeldt J.	Ex. N.E.	20	20	800	250	1050	
Henry & Felling 50	W. N.E.	30	30	800	200	1000	
	Ex. S.W.	40	40	800	300	1100	
	W. W. S.E.	20	20	400	200	600	
Ludwig Weber	N.W.	163.81	163.0	400	203.0		

Scale—Forty rods to an inch, or ten rods to a space, Congress Land, which is one mile square for a section.  
Number of acres in this section, according to the United States Survey.



Scale—Fifty rods to an inch, or ten rods to a space. Congress Land, which is one mile square for a section. Number of acres in this section, according to the United States Survey.

NAMES OF OWNERS.	Section or Plat	DESCRIPTION.	Acres.	Value of Land.	Value of Improvements.	Value of Land and Improvements.
Henry Balmahan	SE	1/4	60	600	200	800
Friedrich Meyer	SW	1/4	15	225	200	425
Butler & Smith	SW	1/4	30	300	100	400
Philipp Kraus	SW	1/4	30	300	100	400
Irish Dougherty	SW	1/4	15	150	200	350
John Bobbe	SW	1/4	15	150	200	350
Lewis Busby	SW	1/4	15	150	200	350
Henry Jirick	SW	1/4	30	300	500	800
Christian Selking	SW	1/4	100	1000	1200	2200
Benjamin Bouch	SW	1/4	100	1600	450	2050
Ben Boster	SW	1/4	90	900	300	1200
Lewis Schroeder	SW	1/4	97	970	700	1670
Wiedrich Reiter	SW	1/4	10	100	100	200
Amuel Tucker	SW	1/4	90	900	1200	2100
Benjamin Reiter	SW	1/4	31.25	310	200	510
Amuel Tucker	SW	1/4	80	800	300	1100
Amuel Tucker	SW	1/4	18	180	150	330
Benjamin Reiter	SW	1/4	100	1000	1000	2000
Eliaser Biggs	SW	1/4	10	100	500	600



Assessor's Plat-Book for

Township, No.

NAMES OF OWNERS.	Meters in Plat.	DESCRIPTION.	Section.	Township.	Range.	Acres.	Hundredths.	Value of Land.	Value of Improvements.	Value of Land and Improvements.
Conrad Ritter	1/2	N.W.	6	23	12	71.25	88.0	3.00	118.5	
John Johnson	1/2	N.W.	1			7.0	7.00	2.00	9.00	
Henry Cutting	1/2	S.W.				7.5	7.50	8.25	177.5	
W. Rame		S.E.				1.60	1.600	4.00	2.000	
August Schroeder	1/2	N.E.				6.5	6.50	37.0	1.02.5	
Christian Selking	1/2	S.W.				8.0	8.00	2.50	1.05.0	
W. Rame	1/2	N.W.	11			12	12.0		1.2.0	
Wilhelmina Gallmeyer	1/2	N.E.				8.0	8.00			
	1/2	S.W.	18			15	15.0			

Congressional Township No.

3.

Scale—Four rods to an inch, or ten rods to a space, Congress Land, which is one mile square for a section.  
Number of acres in this section, according to the United States Survey.

