

Adams

Assessor's Plat-Book for

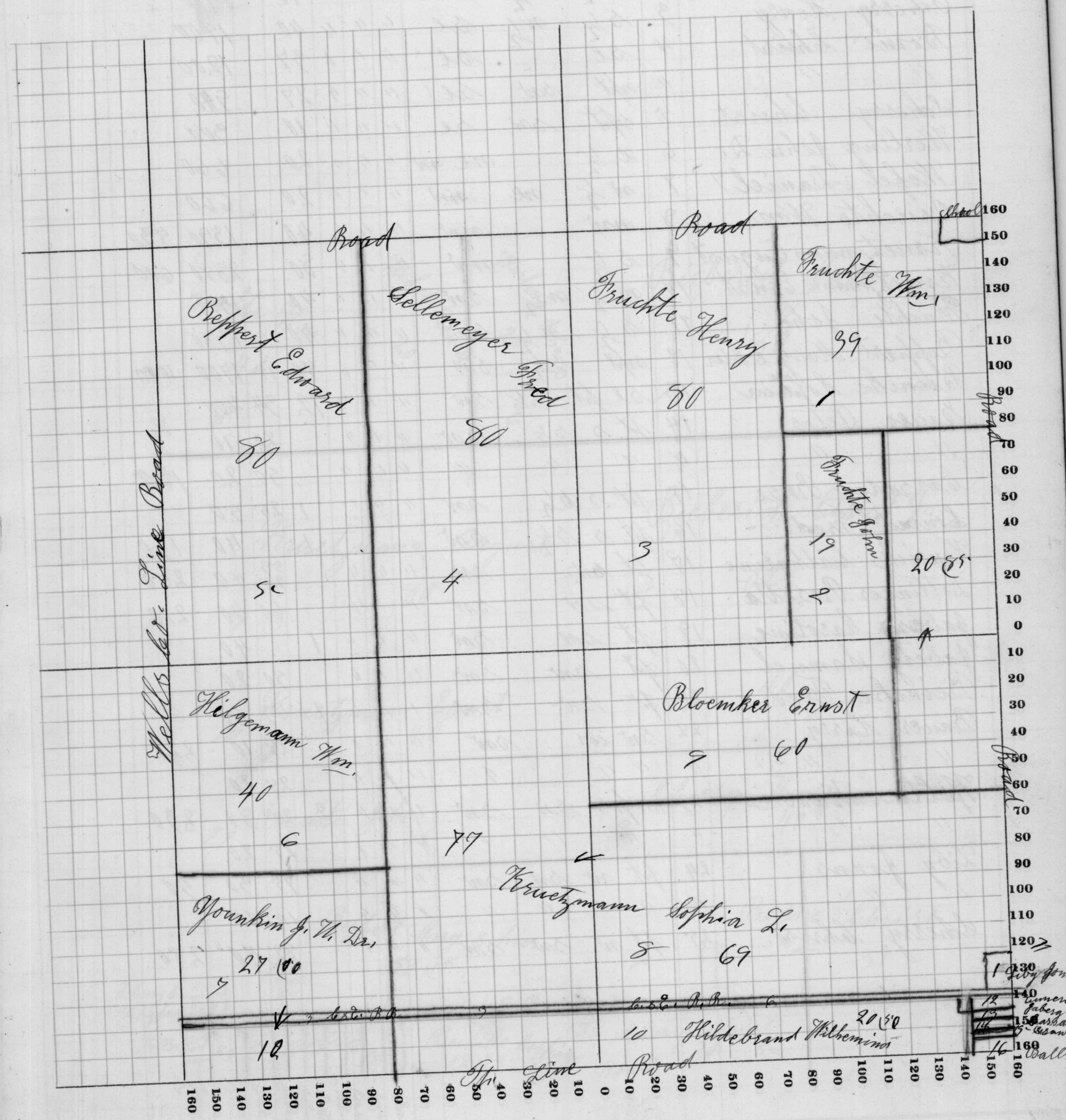
Preble

Township, No.

Congressional Township No. 28, R. 13

NAMES OF OWNERS	Number on Plat	DESCRIPTION	Section	Township	Range	Acres	Hundredths	Value of Lands	Value of Improvements	Value of Lands and Improvements
Fruchte Wm.	1	ne ne	33	28	13	39		1300		
Fruchte John	2	sw pt se ne	"	"	"	19		620		
Fruchte Henry	3	w 1/2 ne	"	"	"	80		2850	620	
Sellemeyer Fred.	4	e 1/2 nw	"	"	"	80		2850	380	
Reppert Edward	5	w 1/2 nw	"	"	"	80		2880	600	
Kilgemann Wm.	6	ms sw	"	"	"	40		1350		
Younkin J. W. Dr.	7	sw pt sw sw	"	"	"	27		740	150	
" " "	"	s pt sw sw	"	"	"	10		300		
Kruetzmann Sophia L.	8	w 1/2 sw	"	"	"	77		2660		
" " "	"	mid pt se	"	"	"	69		2410	720	
Bloemker Ernst	9	sw pt 1/2 se se	"	"	"	60		2100	600	
" " "	"	pt se ne	"	"	"	20	85	710		
Hildebrand Wilhelmina	10	s pt se	"	"	"	20	50	650	20	
Liby Jonas	11	pt se 1/2 se	"	"	"	1		40	400	
Amens Rosina	12	pt se se	"	"	"	33		20	240	
" " "	"	" " "	"	"	"	50		30		
Faberg Samuel	13	pt se se	"	"	"	33		20	200	
Cassaday Rosa	14	pt se se	"	"	"	25		20	190	
Gruber Anna	15	pt se se	"	"	"	25		20	180	
Ball Sarah J.	16	pt se se	"	"	"	66 2/3		40	200	

SCALE: Forty rods to an inch, or ten rods to a space, Congress Land, which is one mile square for a section.
 Number of acres in this section, according to the United States Survey,



Assessor's Plat-Book for

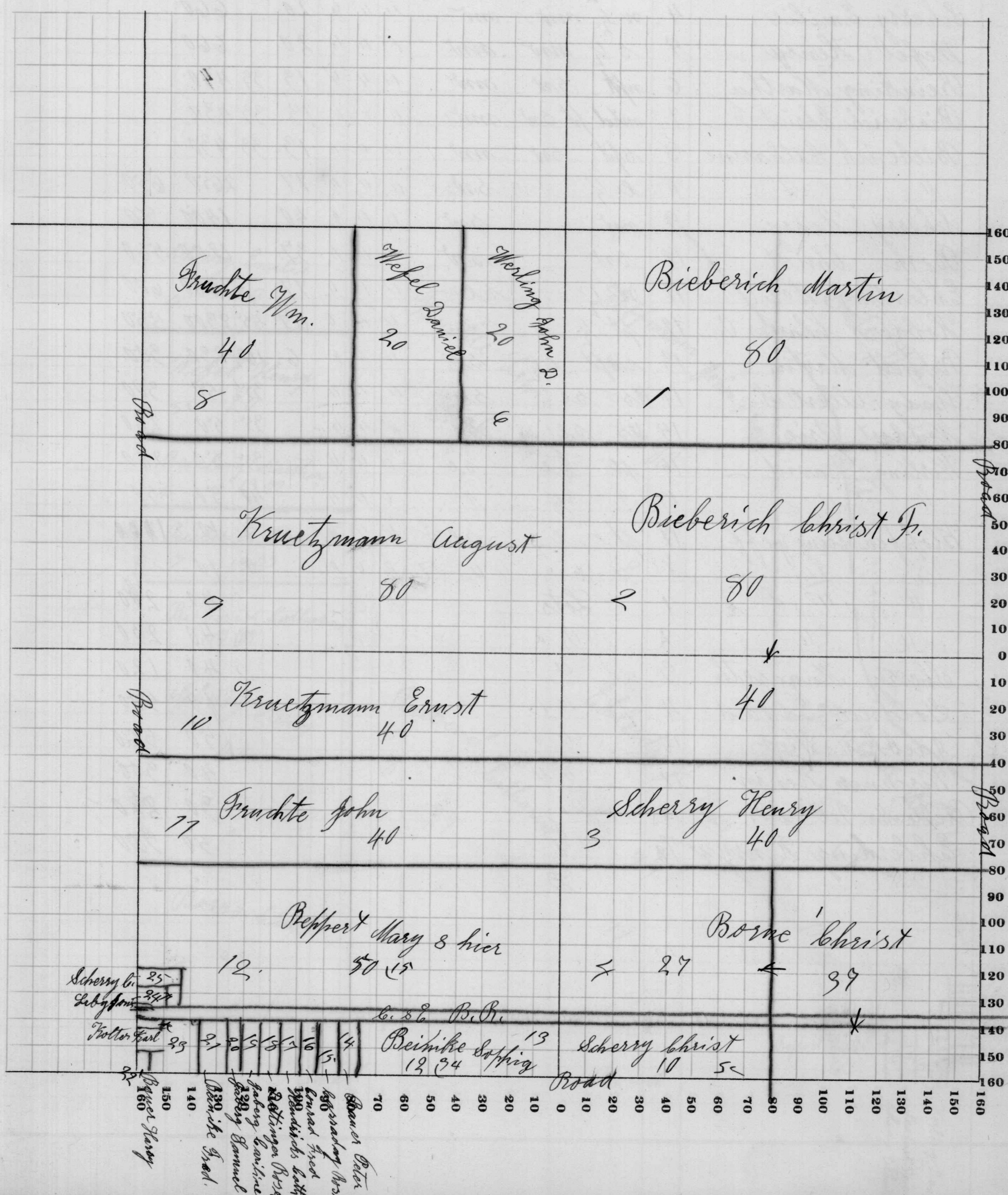
Preble

Township, No.

Congressional Township No. 28, R. 13

NAMES OF OWNERS	Number on Plat	DESCRIPTION	Section	Township	Range	Acres	Hundredths	Value of Lands	Value of Improvements	Value of Lands and Improvements
Bieberich Martin	1	n 1/2 ne	34	28	13	80		2850	560	
Bieberich Christ F.	2	s 1/2 ne	"	"	"	80		2860	700	
" "	"	n 1/2 w 1/2 se	"	"	"	40		1400		
Scherry Henry	3	s 1/2 w 1/2 se	"	"	"	40		1400		
Borne Christ	4	se	"	"	"	37		1200		
" "	"	apt snt se	"	"	"	27		900		
Scherry Christ	5	spt sw se	"	"	"	10		300		
Werling John D.	6	e 1/2 ne nw	"	"	"	20		660		
Wefel Daniel	7	w 1/2 ne nw	"	"	"	20		660		
Fruchte Wm.	8	nw	"	"	"	40		1390	590	
Fruchtmann August	9	s 1/2 nw	"	"	"	80		2890	600	
Fruchtmann Ernst	10	n 1/2 w 1/2 sw	"	"	"	40		1300		
Fruchte John	11	s 1/2 n 1/2 sw	"	"	"	40		1380		
Reppert Mary & hier	12	apt s 1/2 sw	"	"	"	50	15	1700	400	
Beinike Sophia	13	se pt s 1/2 sw	"	"	"	12	34	400		
Bauer Peter	14	pt s s 1/2 sw	"	"	"	20	10			
" "	"	" " " "	"	"	"	50	20	100		
Cassaday Rose	15	pt s s 1/2 sw	"	"	"	1	25	50		
Louard Fred	16	pt s s 1/2 sw	"	"	"	1	40	130		
Henricks Catharine	17	pt snt	"	"	"	53	25	40	250	
Dettinger Rosetta	18	pt snt	"	"	"	60	40	210		
Jaberg Caroline	19	pt snt	"	"	"	1	40			
Jaberg Samuel	20	pt snt	"	"	"	50	20			
Beinike Fred	21	pt snt	"	"	"	1	53	60		
Bauer Harry	22	snt cor snt	"	"	"	25	10	220		
" "	"	" " " "	"	"	"	25	20			
Hollers Karl snt	23	w 1/2 snt snt	"	"	"	2	25	80	290	
" "	"	" " " "	"	"	"	25	20			
Liby Jonas	24	pt w snt snt	"	"	"	75	30	50		
" "	"	" " " "	"	"	"	10	10			
Scherry Christ.	25	pt w snt snt	"	"	"	82	40	250		

SCALE: Forty rods to an inch, or ten rods to a space, Congress Land, which is one mile square for a section.
 Number of acres in this section, according to the United States Survey,.....



Assessor's Plat-Book for

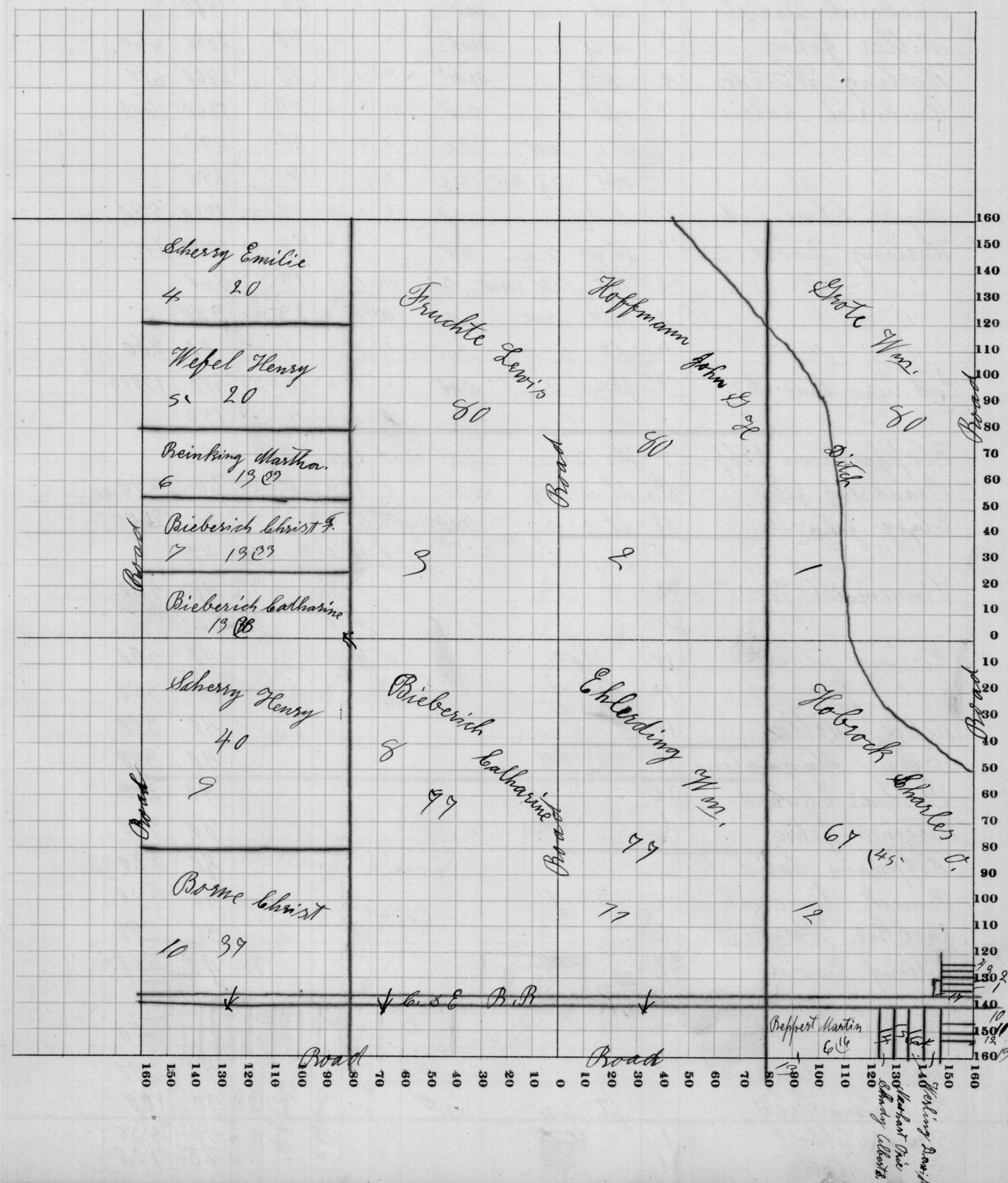
Preble

Township, No.

Congressional Township No. 28, R. 13

NAMES OF OWNERS	Number on Plat	DESCRIPTION	Section	Township	Range	Acres	Hundredths	Value of Lands	Value of Improvements	Value of Lands and Improvements
Grote Wm.	1	e 1/2 ne	35	28	13	80		2700	640	
Hoffmann John G. Jr.	2	w 1/2 ne	"	"	"	80		2760	500	
Fruchte Lewis	3	e 1/2 nw	"	"	"	80		2800		
Scherry Emilie	4	w 1/2 nw nw	"	"	"	20		660		
Wefel Henry	5	s 1/2 nw nw	"	"	"	20		660		
Reinking Martha	6	n 1/4 sw nw	"	"	"	13	33	430		
Bieberich Christ F.	7	n 1/4 pt sw nw	"	"	"	13	33	430		
Bieberich Catharine	8	s 1/4 sw nw	"	"	"	13	33	430		
" "	"	e 1/2 sw	"	"	"	77		2650	650	
Scherry Henry	9	nw sw	"	"	"	40		1400	80	
Borne Christ	10	sw sw	"	"	"	37		1200	560	
Ehlerding Wm.	11	w 1/2 se	"	"	"	77		2680	600	
Hobrock Charles O.	12	pt 1/2 se	"	"	"	67	45	2300	550	
Reppert Martin	13	sw pt e 1/2 se	"	"	"	6	16 2/3	230	300	
Shady Albert S.	14	pts se se	"	"	"		35 3/4	50	300	
Newhart Orie	15	pts se se	"	"	"		35	50	260	
Werling David	16	pts se se	"	"	"		35	50	260	
" "	"	" " "	"	"	"		40	50	50	
Klopfensteine Jeff	17	pt e e 1/2 se	"	"	"		8	10	1220	
" " "	"	" " " " "	"	"	"		5	10		
" " "	1	Lots						40	200	
" " "	2	" "						40	230	
Scherry Magareth	3	" "						40	120	
Goldner Edward	4	" "						40	500	
Jaebker Wm.	10	" "						50	560	
Kirchmeier Henry	11	" "						40	300	
Preble M. Tel. Co.	12	" "						30	220	
Ehlerding Henry	13	" "						50	350	

SCALE: Forty rods to an inch, or ten rods to a space, Congress Land, which is one mile square for a section.
 Number of acres in this section, according to the United States Survey,



Assessor's Plat-Book for Preble

Township, No.

Congressional Township No. 28, R. 13

SCALE: Forty rods to an inch, or ten rods to a space, Congress Land, which is one mile square for a section. Number of acres in this section, according to the United States Survey,

NAMES OF OWNERS	Number on Plat	DESCRIPTION	Section	Township	Range	Acres	Hundredths	Value of Lands	Value of Improvements	Value of Lands and Improvements
Ehlerding Henry	1	e 1/2 ne	36	28	13	80		2850	660	
" "	"	s 1/2 sw ne	"	"	"	20		700		
" "	"	w 1/2 sw ne	"	"	"	20		700		
Bieberich Daniel	2	ent ne	"	"	"	40		1400		
Miller John	3	w 1/2 ent	"	"	"	80		2850	660	
Werling Wm. C.	4	s 1/2 ent	"	"	"	80		2860	600	
Bieberich Carrie	5	npt w 1/2 sw	"	"	"	59		1860	600	
" "	"	w 1/2 ent se	"	"	"	20		690		
" "	"	npt s 1/2 ent se	"	"	"	7		250		
Myers Charles M.	6	e 1/2 se	"	"	"	79	56	2720	580	
Werling David	7	pt n s 1/2 sw	"	"	"	79	50	2830	700	
" "	"	spt s 1/2 ent se	"	"	"	19		460		
" "	"	npt sw se	"	"	"	28		980		
" "	"	pt s s 1/2 sw	"	"	"	1		40	280	
Ind. Pipe Line Co.	8	pt s se sw	"	"	"	14	50	500	15000	
" "	"	" " "	"	"	"	4		150		
Klopfenstein Geff.	9	pts se sw	"	"	"	3		100		
Grandstaf John	10	pt s s 1/2 sw	"	"	"	1	45	60	450	
Elzey John D.	11	pt s s 1/2 sw	"	"	"		39 1/2	40	260	
" "	"	" " "	"	"	"		35	40		
Linnemeier Wm.	12	" " "	"	"	"		39 1/2	40	460	
" "	"	" " "	"	"	"		28	30		
Werling Albert	15	Lots	"	"	"			40	580	
" "	17	"	"	"	"			40	350	
Keller Corille	14	"	"	"	"			40	300	
Beinz Magdalene	19	"	"	"	"			40	300	
Goldner Edward	12	"	"	"	"			40	200	
Breiner John	1/2	"	"	"	"			50	350	
Hoffmann Maria S.	3/4	"	"	"	"			50	220	
Bunck Susanah	5	"	"	"	"			40	350	
Jaebker Wm.	6	"	"	"	"			40	350	
Dilling David	7	"	"	"	"		75	40	380	
" "	"	pt sw sw	"	"	"		75	50		
Bieberich Sophia	8	"	"	"	"			40	300	
Werling August	9	"	"	"	"			40	300	
Puhrmann Fred	"	pt sw sw	"	"	"		25	30	180	
Huser Albert	1	Lots	"	"	"			50	550	
" "	1	"	"	"	"			20	120	

