

Assessor's Plat-Book for

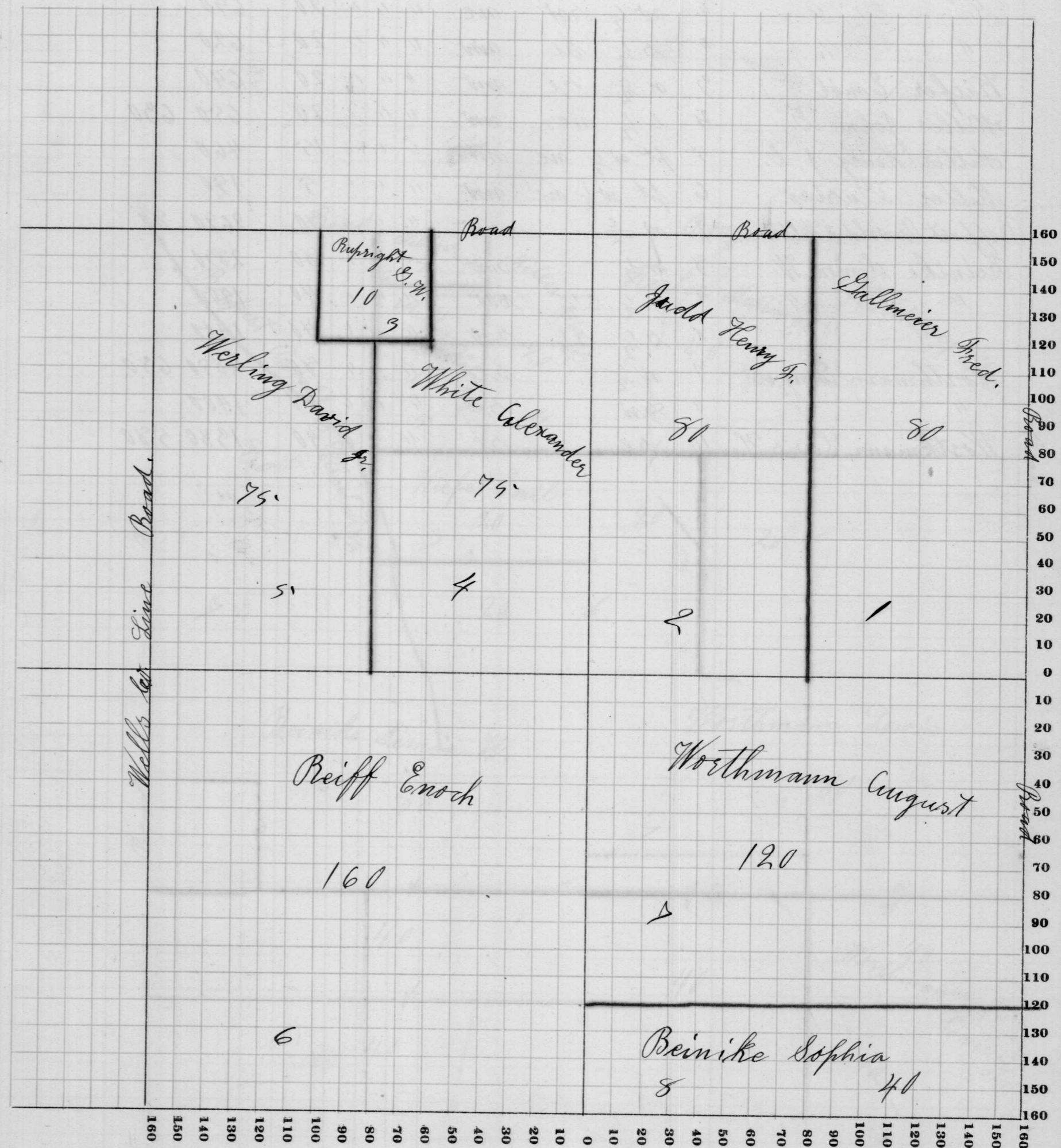
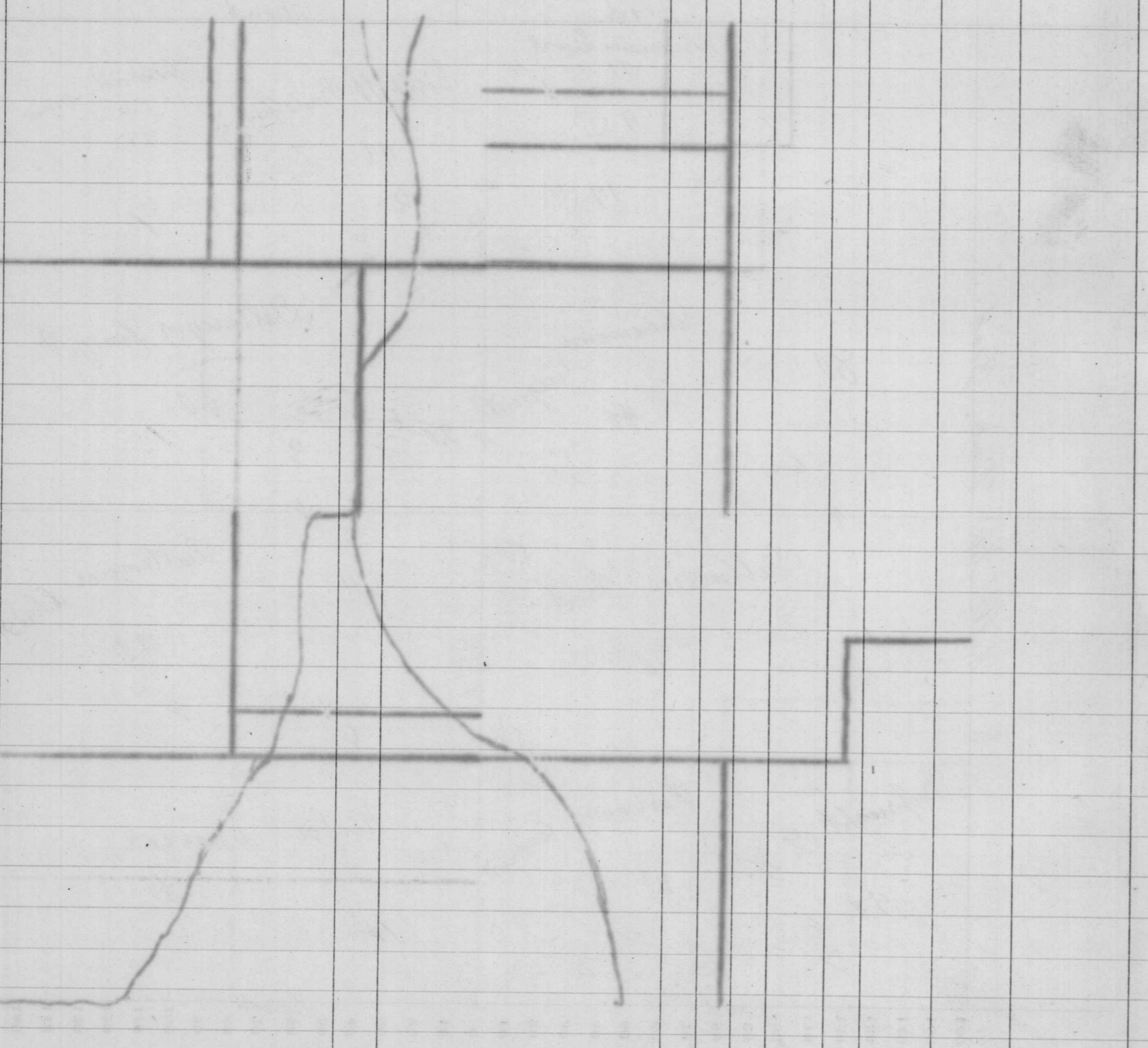
Preble

Township, No.

Congressional Township No. 28, R. 13

NAMES OF OWNERS	Number on Plat	DESCRIPTION	Section	Township	Range	Acres	Hundredths	Value of Lands	Value of Improvements	Value of Lands and Improvements
Gallmeier Fred	1	e 1/2 ne	21	2813	80	2780				
Judd Henry Jr.	2	w 1/2 ne	"	"	80	2810	560			
Rupright G. W.	3	pt w e 1/2 sw	"	"	10	300	70			
pt w e 1/2 sw	1		"							
White Alexander	4	e 1/2 sw	"	"	75	2560	550			
Werling David Jr.	5	w 1/2 sw	"	"	75	2420	50			
Reiff Enoch	6	sw	"	"	160	5250	550			
Worthmann August	7	pt n se	"	"	120	4280	650			
Beinike Sophia	8	s 1/2 s 1/2 se	"	"	40	1980				

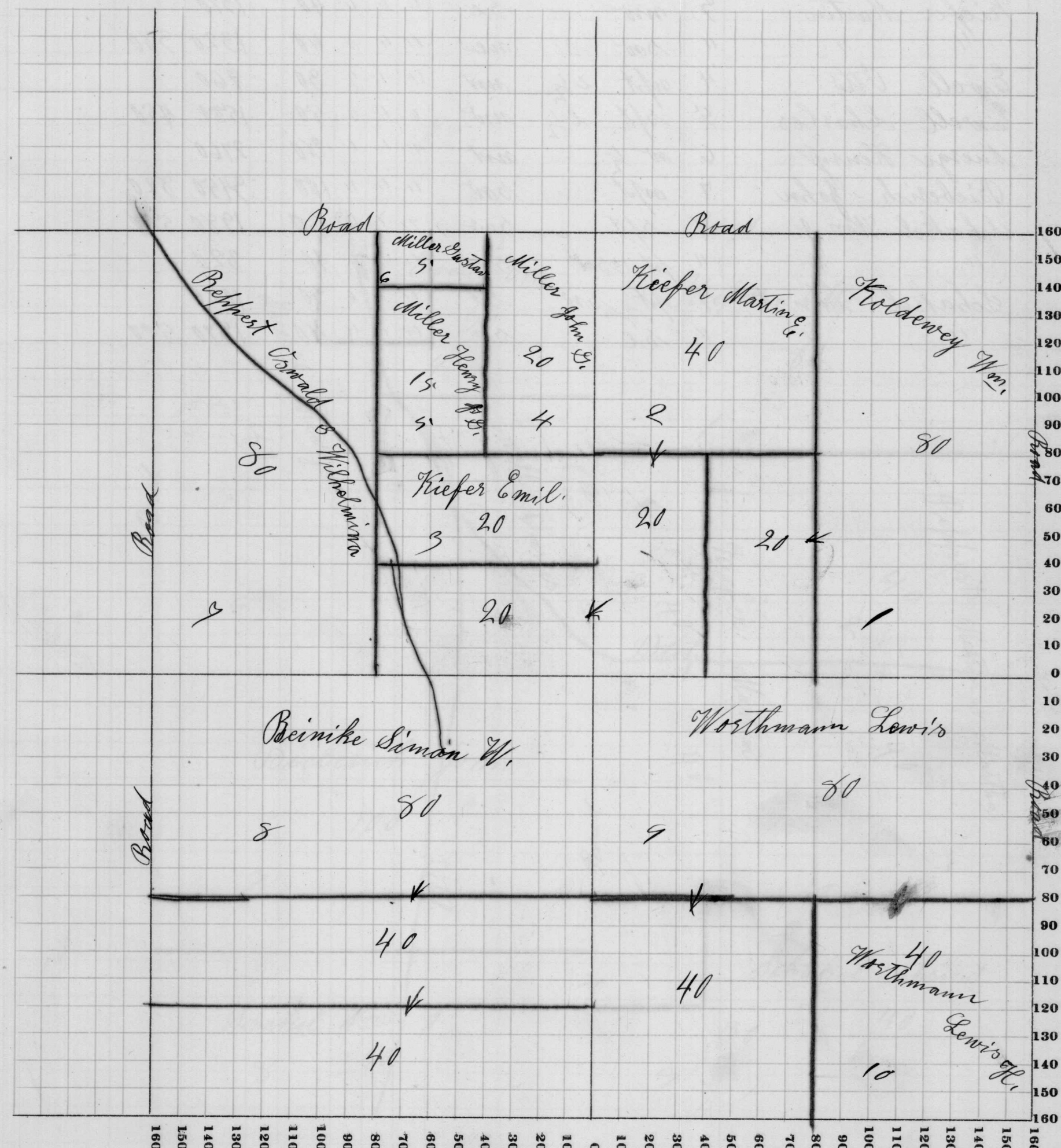
SCALE: Forty rods to an inch, or ten rods to a space, Congress Land, which is one mile square for a section.
 Number of acres in this section, according to the United States Survey,.....



NAMES OF OWNERS	Number on Plat	DESCRIPTION	Section	Township	Range	Acres	Hundredths	Value of Lands	Value of Improvements	Value of Lands and Improvements
Koldewey Wm.	1	e 1/2 me	22	28	13	80		2780	680	
" " "	"	e 1/2 sw me	"	"	"	20		690		
Kiefer Martin E.	2	sw me	"	"	"	40		1350	590	
" " "	"	sw 1/2 sw me	"	"	"	20		690		
" " "	"	sw 1/2 se sw	"	"	"	20		620		
Kiefer Emil	3	sw 1/2 se sw	"	"	"	20		640		
Miller John G.	4	e 1/2 me	"	"	"	20		650	690	
Miller Henry J. G.	5	pt sw 1/2 me	"	"	6	15		460		
Miller Gustav	6	pt sw 1/2 me	"	"	6	5		150		
Preppert Oswald & Wilhelmina	7	sw 1/2 sw	"	"	"	80		2690	80	
Reinike Simon W.	8	sw 1/2 sw	"	"	1	80		2890		
" " "	"	sw 1/2 sw 1/2	"	"	1	40		1400		
" " "	"	sw 1/2 sw 1/2	"	"	1	40		1400		
Worthmann Lewis	9	sw 1/2 se	"	"	4	80		2850	680	
" " "	"	sw se	"	"	4	40		1400		
Worthmann Lewis H.	10	se se	"	"	4	40		1380	580	

SCALE: Forty rods to an inch, or ten rods to a space, Congress Land, which is one mile square for a section.

Number of acres in this section, according to the United States Survey,



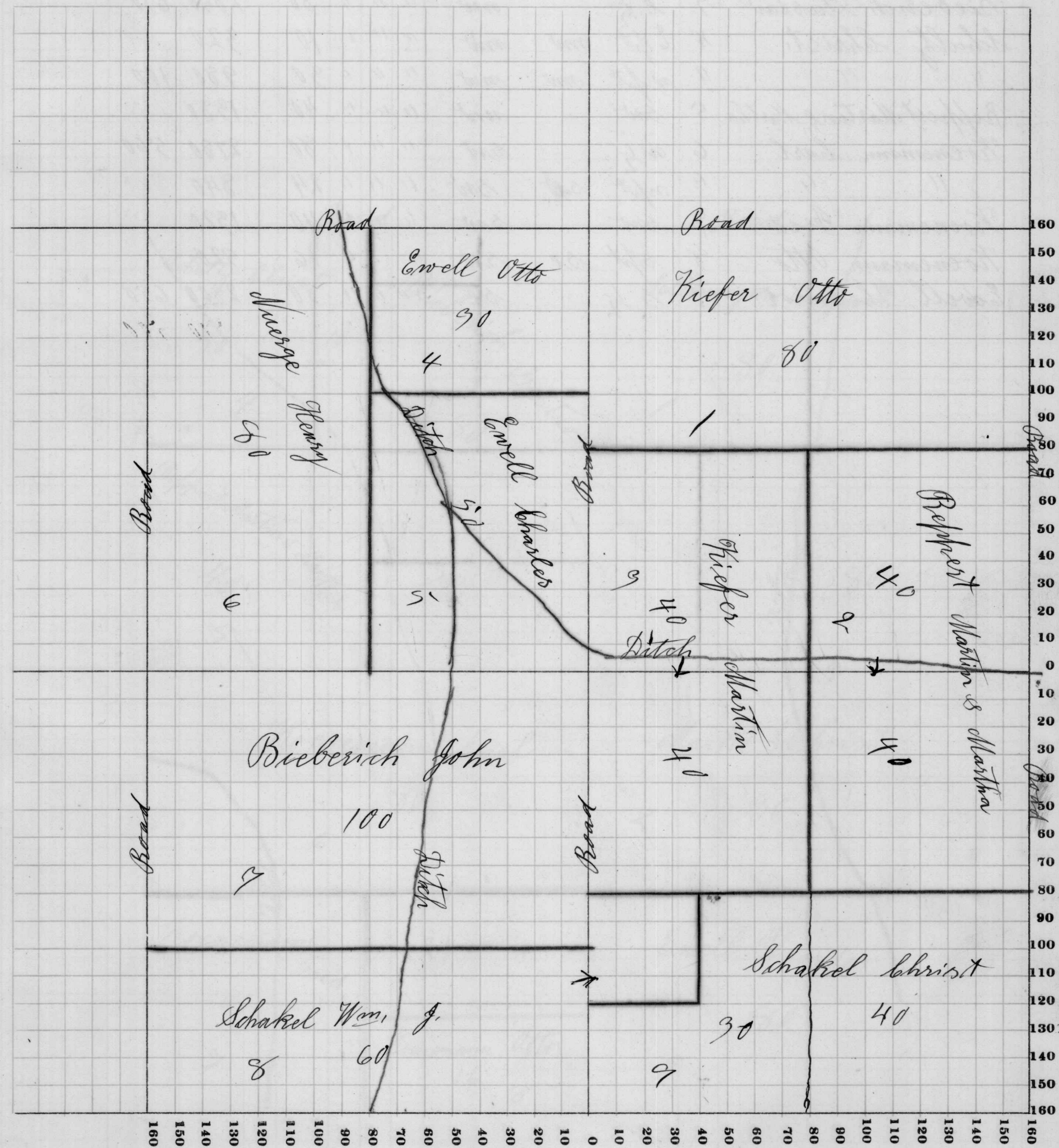
Assessor's Plat-Book for Preble Township, No.

Congressional Township No. 28, R. 13

NAMES OF OWNERS	Number on Plat	DESCRIPTION	Section	Township	Range	Acres	Hundredths	Value of Lands	Value of Improvements	Value of Lands and Improvements
Kiefer Otto	1	n 1/2 ne	23	28	13	80		2790	600	
Reppert Martin & Martha	2	ne	"	"	"	40		1960		
" "	"	se	"	"	"	40		1920	650	
Kiefer Martin	3	nw	"	"	"	40		1970		
" "	"	sw	"	"	"	40		1920	980	
Ewell Otto	4	spt e 1/2 nw	"	"	"	30		960		
Ewell Charles	5	spt e 1/2 nw	"	"	"	50		1500	450	
Merge Henry	6	w 1/2 nw	"	"	"	80		2760		
Bieberich John	7	spt sw	"	"	"	100		3450	820	
Schakel Wm J.	8	spt sw	"	"	"	60		1980	500	
" "	"	spt sw	"	"	"	10		320		
Schakel Christ	9	spt sw	"	"	"	30		1020		
" "	"	se	"	"	"	40		1970	500	

SCALE: Forty rods to an inch, or ten rods to a space, Congress Land, which is one mile square for a section.

Number of acres in this section, according to the United States Survey,.....



Assessor's Plat-Book for

Preble

Township, No.

Congressional Township No. 28, R. 13

NAMES OF OWNERS	Number on Plat	DESCRIPTION	Section	Township	Range	Acres	Hundredths	Value of Lands	Value of Improvements	Value of Lands and Improvements
Sellemeyer August	1	sw 1/2 ne	24	28	13	80		2600	480	
Mackie Christ	2	sw 1/2 se	"	"	"	80		2700	600	
" "	"	sw 1/2 ne	"	"	"	80		2650		
Bieberich Gustav	3	sw 1/2 nw	"	"	"	80		2850	650	
Schultz Christ.	4	sw 1/4 nw	"	"	"	10		320		
" "	"	sw 1/4 nw	"	"	"	30		980	100	
Beppert Martins Martha	5	sw nw	"	"	"	40		1980		
Koenemann Carl	6	sw 1/2 sw	"	"	"	80		2780	560	
" "	"	sw 1/4 sw	"	"	"	24		840		
Koenemann Fred	7	sw sw	"	"	"	40		1920		
Koenemann Otto	8	sw 1/4 se	"	"	"	16		520		
Edwell Theodor	9	sw 1/2 se	"	"	"	80		2800	650	

SCALE: Forty rods to an inch, or ten rods to a space, Congress Land, which is one mile square for a section.
 Number of acres in this section, according to the United States Survey,.....

