

COUNTY, INDIANA, 19

Assessor's Plat-Book for

Pueble

Township, No.

NAMES OF OWNERS.

Number of Pts.

DESCRIPTION.

Acres.

Value of Land.

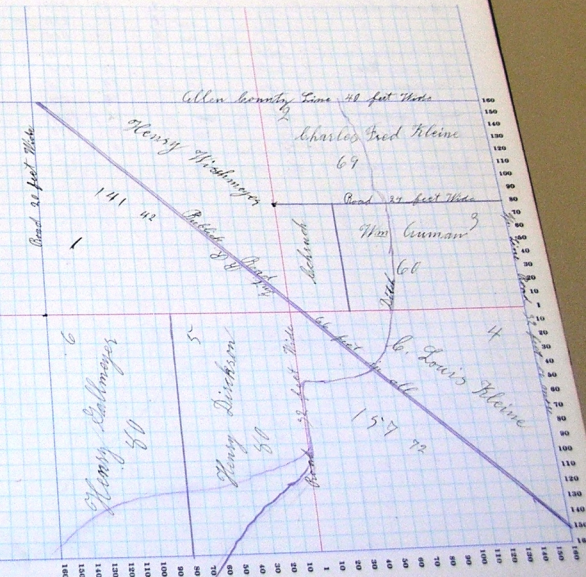
Value of Improvements.

Value of Land and Improvements.

SECTION No. 1

Congressional Township No. 28, R. 13

SCALE: Forty rods to an inch, or ten rods to a space, Congress Land, which is one mile square for a section
 Number of acres in this section, according to the United States Survey.



Preble

Township, No.

Assessor's Plat-Book for

NAMES OF OWNERS	Number or Pts.	DESCRIPTION.	Acres.	Township	Range	Sections	Value of Lands.	Value of Improvements.	Value of Lands and Improvements.
				25	13				
Zwick Edward	1	npt	39 16			1840	600		
" "	1	n ¹ / ₂ ne	35 36			550			
" "	1	s ¹ / ₂ e ¹ / ₂ ne	19 35			450		9720	
Zwick Charles Jr	2	w ¹ / ₂ ne	21			515			
" "	2	e ¹ / ₂ sw	79			2355	700		
" "	2	e ¹ / ₂ ne	20			410		5950	
" "	2	pt w ¹ / ₂ ne	52			1570		1510	
Stallmeyer Erast	3	e ¹ / ₂ ne	40			1060	750	1810	
Stallmeyer Henry	4	w ¹ / ₂ se	54			1560		1560	
Wiegmann Charles	5	s ¹ / ₂ se	34			1000			
Kickmann Wm. G. H.	6	pt e ¹ / ₂ se	62 42			1650		2650	
Wente Christ	7	w ¹ / ₂ e ¹ / ₂ sw	75			1990	450		
Wente Christ	7	w ¹ / ₂ ne	4			95	90	2490	
" "	"	pt sw ne	75			20		20	
Zickmann Andrew	8	sw cor sw							

SCALE: Forty rods to an inch, or ten rods to a space, Congress Land, which is one mile square for a section
 Number of acres in this section, according to the United States Survey.



Proble

Township, No.

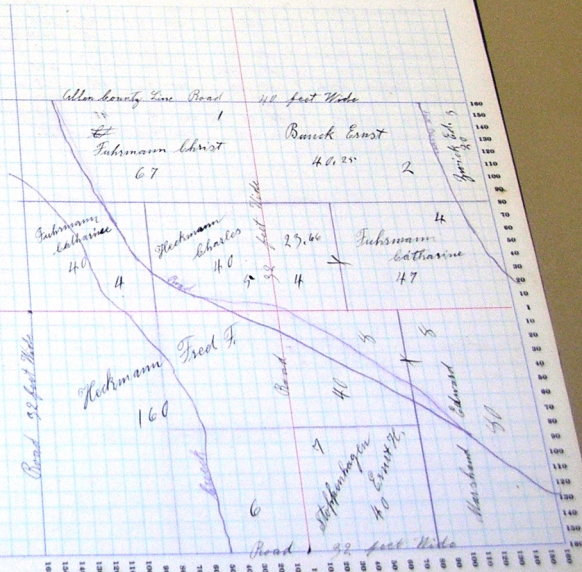
Assessor's Plat-Book for

NAVES OF OWNERS.	Number of Plots.	DESCRIPTION.	Section.	Township.	Range.	Acres.	Homestead.	Value of Land.	Value of Improvements.	Value of Land and Improvements.
Fuhrmann Christ	1	pt NW	3	25	13	67		1670		1670
Bunch Ernst	2	NW NE	3	"	"	40	25	1190		1190
Zwick Edward	3	NE NE	3	"	"	20		690		690
Fuhrmann Katharine	4	NW NW	3			40		950	700	
" "	"	road 1/3 2/2 NE	4			25	66	680		
" "	"	2/3 2/2 NE	"			47		1360		
Heckmann Charles	5	SE NW	3			40		1180	780	3690
Heckmann Fred F.	6	SE NW	3			160		4400		4400
Stoepenhagen Ernst H.	7	SE SE	3			40		1210		1210
Marshall Edward	8	SE SE	3			80		2270	550	
" "	"	1/2 SE	3			40		1180		4000

SECTION No. 9

Congressional Township No. 28, R. 13

SCALE: Forty rods to an inch, or ten rods to a space. Congress Land, which is one mile square for a section. Number of acres in this section, according to the United States Survey.



Preble

Township, No.

Assessor's Plat-Book for

NAMES OF OWNERS.	Number of Plots.	DESCRIPTION.				Section.	Township.	Range.	Acres.	Homestead.	Value of Land.	Value of Improvements.	Value of Land and Improvements.
Easton Harvey	1	wp			sw	4	28	70		2060	900	2960	
Reinking Martin	2	npt			ne	4	"	110		2660			
"	2	midpt			sw	4	"	40		1240	750	4640	
"	3	spt			sw	4	"	50		1590	700		
Subrman John J	3	spt			ne	4	"	50		1250		9480	
"	3	spt			ne	4	"	50		1450	400	1850	
Young Charles	4	pt	wp		sw	4	"	20		500	280	780	
Bullmoyer Martin	5	pt	sw		se	4	"	30		640		640	
Luolomann Fred	6	pt	ne		se	4	"	100		2520	650	3170	
Strom Brothers Comp.	7	pt	se		sw	4	"	98		910		910	
Reese Hermann	8	spt			sw	4	"	46		1050	450	1500	
Bullmoyer Edward	9	pt	se	ft	sw	4	"	16		470		470	
Bullmoyer Wm.	10	se	cor		se	4	"						

SECTION No. 4

Congressional Township No. 28, R. 13

SCALE: Forty rods to an inch, or ten rods to a space, Congress Land, which is one mile square for a section. Number of acres in this section, according to the United States Survey.

