





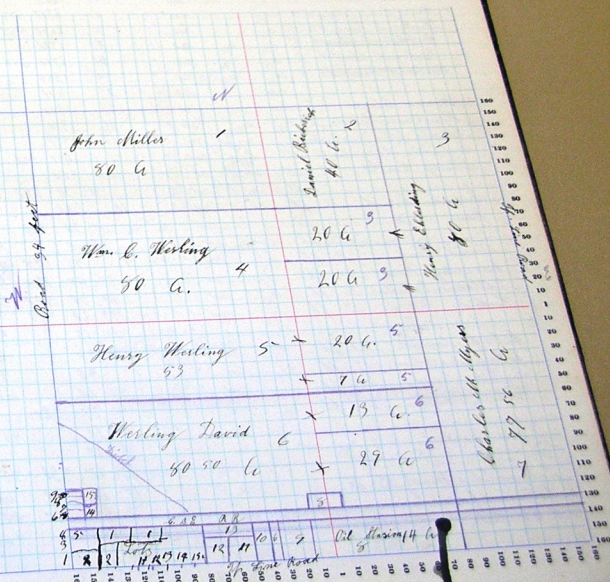
Assessor's Plat-Book for

NAME OF OWNER	Acres	DESCRIPTION	Block	Tract	Range	Acres	Market Value	Value of Land	Value of Improvements	Total Value
Miller John	1	1/4	SW	36	25	13	20	2600	500	3200
Bieberich Daniel	2	1/4	NE	"	"	"	40	1350		1350
Eckharding Henry	3	1/2	NE	"	"	"	20	670	650	1320
"		1/4	SW	"	"	"	20	670		670
"		1/4	NE	"	"	"	50	2640	550	4670
Werling Mrs. G.	4	1/2	SW	"	"	"	53	1720	620	3220
Werling Henry	5	1/4	NE	"	"	"	20	660		660
"		1/4	SW	"	"	"	7	250		250
"		1/4	NE	"	"	"	13	450		450
Werling David	6	1/2	SW	"	"	"	50	2700	550	3250
"		1/4	SW	"	"	"	29	950		950
"		1/4	SW	"	"	"	1	30	90	120
"		1/4	SW	"	"	"	77	2570	550	4750
Meyer Charles H.	7	1/2	SW	"	"	"	14	470	420	910
Indiana Pipe Line Co.	8	1/4	SW	"	"	"	4	130		130
"		1/4	SW	"	"	"	3	70		70
Kloffenstein Jeff	9	1/4	SW	"	"	"	1	75	50	125
Brandstaf John G.	10	1/4	SW	"	"	"	33 1/2	20	370	400
Elvey John D.	11	1/4	SW	"	"	"	33 1/2	20	450	470
Bieberich Otto	12	1/4	SW	"	"	"	63 1/2	50	400	450
Bieberich Christ D. F.	13	1/4	SW	"	"	"	25	10	50	90
Fuhrmann Fred.	14	1/4	SW	"	"	"	75	30		30
Werling David G.	15	1/4	SW	"	"	"		20	380	400
"		Lot 7						20	500	520
Werling Albert		Lot 15						20	580	400
Feller Orville		Lot 14						20	400	420
Bienz Magdalena		Lot 13						20	260	280
Golkner Edw.		Lot 12						20	280	300
Steele Catharine		Lot 11						40	450	490
Breiner John		Lot 1 & 2						60	800	960
Bunck Luadmah		3, 8, 4, 5						20	350	370
Meyer Mrs. G.		1						20	400	520
Huser Albert		6						20	350	370
Jachkes Wm.		9						20	350	370
Werling August								20	350	370

SECTION No. 36

Congressional Township No. 28, R. 13

SCALE: Forty rods to an inch, or ten rods to a space, Congress Land, which is one mile square for a section  
 Number of acres in this section, according to the United States Survey.



John Miller  
30 A

David Worling  
40 A

Wm. C. Worling  
50 A

20 A  
20 A

Henry Worling  
80 A

Henry Worling  
53

20 A  
7 A

Worling David  
80 50 A

13 A  
29 A

Charles M. Myers  
97 56 A

15
14

4 5	5	1	1	1	13	10 6	Oil Station 4 A
1	2	12	11	12	11	5	

Peeble

Township, No.

Assessor's Plat-Book for

RANGE OF OWNERS	SECTION	DESCRIPTION	ACRES	TAXES	VALUATION	ASSESSMENT	REMARKS
			35 28 13	20	650		
Sherry Louis	1	ac	ac	35 9 1	20	670	650
Wright Henry	2	ac	ac	35 9 1	19 33	420	670
Bushnell David L	3	ac	ac	35 9 1	19 33	450	420
Bushnell David L	4	ac	ac	35 9 1	21	2640	450
Smith Lewis	5	ac	ac	35 9 1	21	2670	2640
Hoffmann Charles	6	ac	ac	35 9 1	21	2570	570
Scott Wm	7	ac	ac	35 9 1	21 22	2270	600
Hubert Charles	8	ac	ac	35 9 1	21	2370	550
Ehlerding Wm	9	ac	ac	35 9 1	21	2600	550
Bushnell Wm	10	ac	ac	35 9 1	19 33	420	2500
"	11	ac	ac	35 9 1	21	1500	670
Sherry Henry	12	ac	ac	35 9 1	21	1200	570
Burns Robert	13	ac	ac	35 9 1	6	200	570
Ehlerding Bud	14	ac	ac	35 9 1	50	20	1700
Shewhart Eric D	15	ac	ac	35 9 1	50	20	420
Fuhrmann Charles	16	ac	ac	35 9 1	65	50	500
Unlegal Lawrence	17	ac	ac	35 9 1	65	50	260
Best David L	18	ac	ac	35 9 1	12	50	50
McCabe H. Col.	19	ac	ac	35 9 1	12	50	270
Arceives John	20	ac	ac	35 9 1	12	50	295
Jaehner Wm	21	ac	ac	35 9 1	12	50	370
Bluffington Jeff	22	ac	ac	35 9 1	12	50	470
"	23	ac	ac	35 9 1	12	50	1500
"	24	ac	ac	35 9 1	12	50	5
Sherry Margaret	25	ac	ac	35 9 1	12	50	5
Goldner Edward	26	ac	ac	35 9 1	12	50	190
Chicago Erie RR	27	ac	ac	35 9 1	12	50	170
	28	ac	ac	35 9 1	12	50	490
	29	ac	ac	35 9 1	12	50	440
	30	ac	ac	35 9 1	12	50	970

SCALE. Forty rods to an inch, or ten rods to a square, Congress Land, which is one mile square for a section. Number of acres in this section, according to the United States Survey.

