

Proble

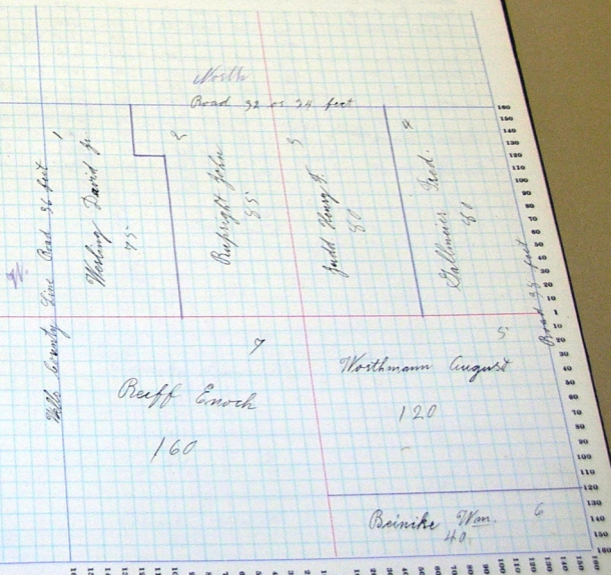
Township, No.

Assessor's Plat-Book for

NAME OF OWNER	ACRES	DESCRIPTION	Area			Value of Land	Value of Improvements	Total Value	
			1	1	1				
Harling David Jr	1	pt 1/2	21	29	12	75	2400	50	2450
Reupright John	2	1/2	21	"	"	85	2700	700	3400
Judd Henry B.	3	1/2	21	"	"	80	2570	630	3200
Gallman Fred	4	1/2	21	"	"	80	2760		2560
Northman August	5	1/2	21	"	"	120	3960	400	4360
Beinick Wm.	6	1/2	21	"	"	40	1520		1320
Reiff Enoch	7	1/2	21	"	"	160	5000	580	5580

SECTION No. 21

Congressional Township No. 28, R/3

SCALE: Forty rods to an inch, or ten rods to a space, Congress Land, which is one mile square for a section.
Number of acres in this section, according to the United States Survey.

Assessor's Plat-Book for

Preble

NAMES OF OWNERS.	Number of Pts.	DESCRIPTION.		Section.	Township.	Range.	Acres.	Hindstake	Value of Land.	Value of Improvements.	Value of Land and Improvements.
<i>Proffert Gerald & Kellerman</i>	1	<i>nw 1/2</i>	<i>ac</i>	<i>sw</i>	22	24	13	50	2500	60	2600
<i>Keller Henry J.</i>	2	<i>sw 1/2</i>	<i>ac</i>	<i>sw</i>	22	"	"	20	620		620
<i>Keller John G.</i>	3	<i>se 1/2</i>	<i>ac</i>	<i>sw</i>	22	"	"	20	620	600	1220
<i>Kiefer Emil G.</i>	4	<i>sw 1/2</i>	<i>ac</i>	<i>sw</i>	22	"	"	20	650		650
<i>Kiefer Martin E.</i>	5	<i>se 1/2</i>	<i>ac</i>	<i>sw</i>	22	"	"	20	620		620
<i>" " "</i>	"	<i>sw</i>	<i>ac</i>	<i>sw</i>	22	"	"	40	1250	550	
<i>" " "</i>	"	<i>sw 1/2</i>	<i>ac</i>	<i>sw</i>	22	"	"	20	650		650
<i>" " "</i>	"	<i>sw 1/2</i>	<i>ac</i>	<i>sw</i>	22	"	"	40	2650	750	3050
<i>Koldewey Wm.</i>	6	<i>se 1/2</i>	<i>ac</i>	<i>sw</i>	22	"	"	20	640		640
<i>" " "</i>	"	<i>se 1/2</i>	<i>ac</i>	<i>sw</i>	22	"	"	50	2650	750	4020
<i>Korthmann Lewis</i>	7	<i>sw 1/2</i>	<i>ac</i>	<i>sw</i>	22	"	"	50	2640	450	6490
<i>" " "</i>	"	<i>se 1/2</i>	<i>ac</i>	<i>sw</i>	22	"	"	50	2640		2640
<i>Reinike Simon W.</i>	8	<i>sw 1/2</i>	<i>ac</i>	<i>sw</i>	22	"	"	40	1520		1520
<i>" " "</i>	"	<i>sw 1/2</i>	<i>ac</i>	<i>sw</i>	22	"	"	40	1520		1520
<i>Reinike Wm. H.</i>	9	<i>se 1/2</i>	<i>ac</i>	<i>sw</i>	22	"	"	40	1520		1520

Assessor's Plat-Book for

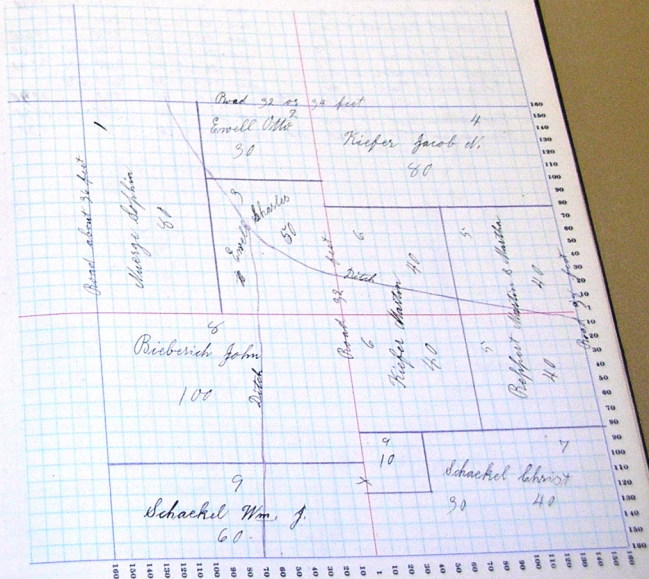
Proble

Township, No.

NAME OF OWNER	Section	Subdiv	DESCRIPTION	Acres	Market Value	Value of Improvements	Value of Land and Improvements
George Dolphin	1	sw	sw	25 2/3	50	2650	2650
Ernell O'Le	2	sw	sw	25 1/2	50	970	970
Ernell Charles jr	3	sw	sw	25 1/2	50	1570	700 1750
Kiefer Jacob W.	4	sw	sw	25 1/2	50	1550	300 900
Poppert Christian W.	5	sw	sw	25 1/2	50	1550	650 550 300
"	6	sw	sw	25 1/2	50	1500	500
Kiefer Martin	7	sw	sw	25 1/2	50	1000	2900
Schackel Christ	8	sw	sw	25 1/2	50	1540	600 2940
"	9	sw	sw	25 1/2	50	3260	780 4040
Bieberich John	10	sw	sw	25 1/2	50	1750	550
Schackel Wm. J.	11	sw	sw	25 1/2	50	350	2540

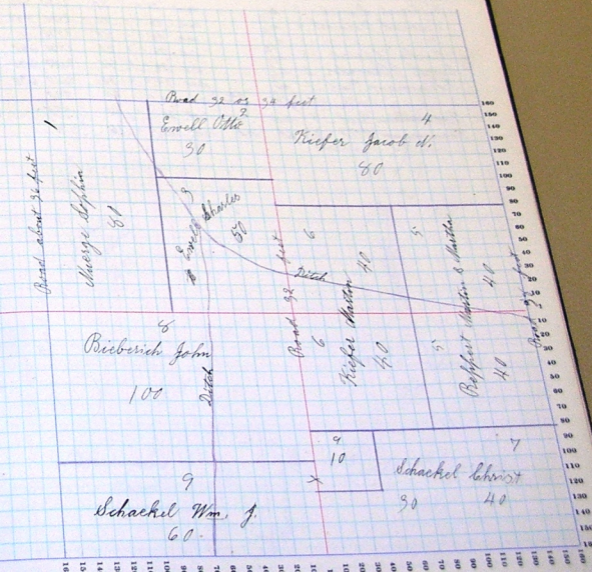
Congressional Township No. 28, R. 13

SCALE: Forty rods to an inch, or ten rods to a space, Congress Land, which is one mile square for a section. Number of acres in this section, according to the United States Survey.



SECTION No. 23

Congressional Township No. 28, R. 13

SCALE: Forty rods to an inch, or ten rods to a space, Congress Land, which is one mile square for a section
Number of acres in this section, according to the United States Survey.

Assessor's Plat-Book for

Proble

NAMES OF OWNERS.	Number in Plat.	DESCRIPTION.	Section.	Township.	Range.	Acres.	Market Value.	Value of Improvements.	Value of Land and Improvements.
Alchutty Christ.	1	e Side int mt	24	28	13	10	320		
"	"	fb mt mt	24	"	"	30	960		
"	"	mt	24	"	"	40	1550		1250
Geppert Martin & Martha	2	sw	24	"	"	80	2650	700	1950
Bieberich Daniel	3	e 1/2	24	"	"	80	2500	550	3380
Leonard Delmott	4	n 1/2	24	"	"	80	2530		
"	4	s 1/2	24	"	"	80	2580	680	5610
Macke Christ	5	n 1/2	24	"	"	80	2600	680	3260
Erwell Theodor	6	s 1/2	24	"	"	80	2610	630	3280
Koenemann Carl	7	n 1/2	24	"	"	24	790		
"	"	se mt sw	24	"	"	40	1930		4030
"	"	sw	24	"	"	16	590		1530
Koenemann Fred	8	sw	24	"	"	16	590		590
Koenemann Otto	9	ft se sw	24	"	"	16	590		590

SECTION No. 24

Congressional Township No. 28, R. 13

SCALE: Forty rods to an inch, or ten rods to a space, Congress Land, which is one mile square for a section
 Number of acres in this section, according to the United States Survey.

