

COUNTY, INDIANA, 19

Township, No.

Assessor's Plat-Book for

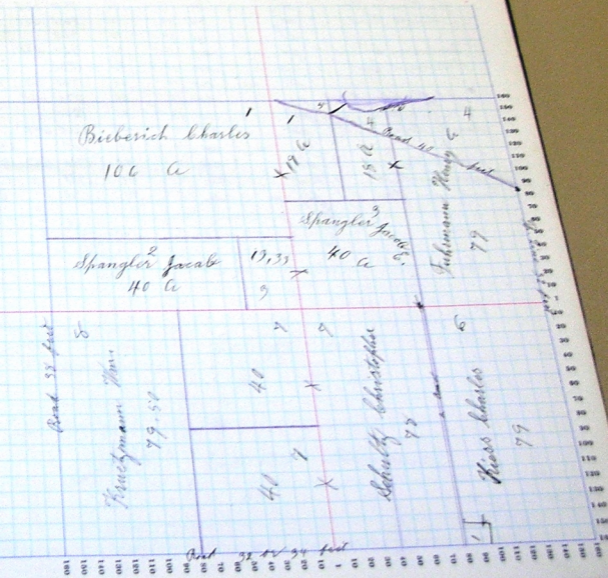
Proble

NAME OF OWNER.	Number of Plats	DESCRIPTION.	Section			Acres	Market Value	Value of Improvements	Value of Land and Improvements
			1	2	3				
Bieberich Charles	1	nft	13	28	15	106	2750	700	
"	"	ft	13	"	"	19	500		3950
"	"	ft	13	"	"	40	1200		1200
"	"	ft	13	"	"	40	900	440	
Spangler Jacob	2	1/2	13	"	"	40	960		
Spangler Jacob E.	3	lot	13	"	"	15	30		
"	"	ft	13	"	"	2	30		1730
"	"	ft	13	"	"	79	2100	600	1730
"	"	ft	13	"	"	18	250		2950
Inermann Henry G.	4	1/2	13	"	"	2	40		40
"	"	1/2	13	"	"	2	40		
Scheumann Caroline	5	ft	13	"	"	79	2400	450	
Kiess Charles	6	1/2	13	"	"	1	30		2980
"	"	ft	13	"	"	40	1310		
Schultz Christ	7	se	13	"	"	40	1310	930	
"	"	ne	13	"	"	40	1310	930	6100
"	"	se	13	"	"	78	2450		
"	"	sw	13	"	"	79	2440	750	3190
Kraetzmann Wm.	8	sw	13	"	"	79	2440	750	3190

SECTION No. 13

Congressional Township No. 28, R. 13

SCALE: Forty rods to an inch, or ten rods to a space, Congress Land, which is one mile square for a section. Number of acres in this section, according to the United States Survey.



Peeble

Township, No.

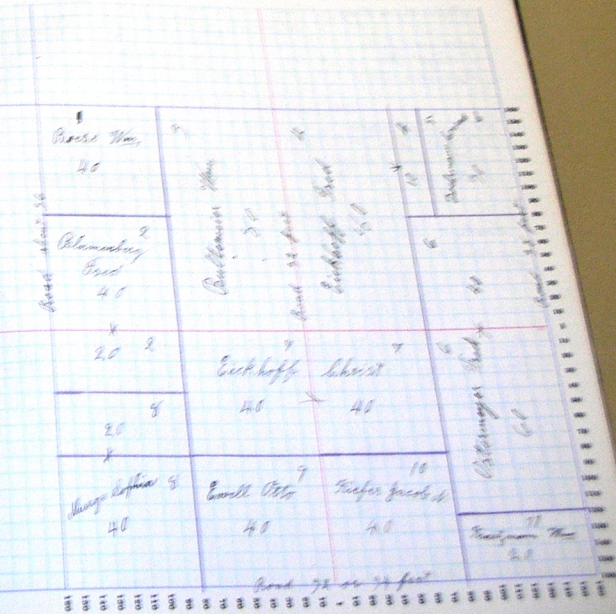
Assessor's Plat-Book for

NAME OF OWNER.	Acres in this	DESCRIPTION	Area			Assess-ment	Value of Land.	Value of Improvements	Value of Land and Improvements	
			Acres	Roofs	Sq. Ft.					
Bross Thos	1	cont	cont	14	20	15	40	1148	300	1448
Calamanchy Fred	2	cont	cont	14	"	"	40	1260	600	
"	"	cont	cont	14	"	"	28	630		2490
Bentley Thos	3	cont	cont	14	"	"	38	2508	560	3068
Eckhoff Fred	4	cont	cont	14	"	"	38	2618	638	
"	"	cont	cont	14	"	"	18	920		3990
Doehmann Jacob	5	cont	cont	14	"	"	38	920	220	1140
Ostermayer Fred	6	cont	cont	14	"	"	48	1280		
"	"	cont	cont	14	"	"	60	1940	700	3920
Eckhoff Albert	7	cont	cont	14	"	"	48	1270	660	
"	"	cont	cont	14	"	"	40	1260		3190
George Sophia	8	cont	cont	14	"	"	48	1260	630	
"	"	cont	cont	14	"	"	28	610		2420
Lowell Otto	9	cont	cont	14	"	"	48	1320	650	1970
Kiefer Jacob H	10	cont	cont	14	"	"	48	1320		1320
Heathman Thos	11	cont	cont	14	"	"	28	630		630

SECTION No. 14

Congressional Township No. 28, R. 15

SCALE: Forty rods to an inch, or ten rods to a square, Congress Land, which is one mile square or a section
 Number of acres in this section, according to the United States Survey.



Assessor's Plat-Book for

Public

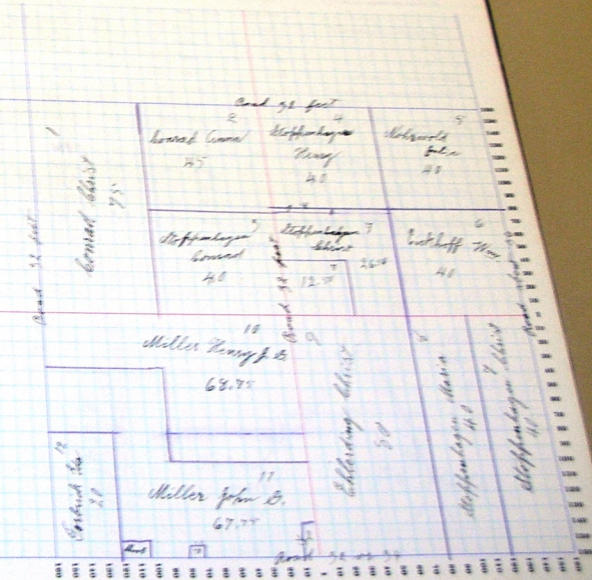
Township, No.

PARTY OR OWNERS	Number of Acres	DESCRIPTION	Acres	Taxes	Assess	Market Value	Assessed Value	Special Assessments	Total Assessed Value
Howard Christ	1	ft $\frac{1}{2}$	cont	19 23 13	75	2960	600		2960
Howard Christ	2	acph	cont	19 " "	45	1570	550		1940
Steffenhagen Howard	3	ac	cont	19 " "	48	1260			1260
Steffenhagen Henry	4	cont	ac	19 " "	48	1000	670		1670
" " "	"	ft cont cont	$\frac{1}{2}$ ac	19 " "	1	50			50
" " "	5	cont	ac	19 " "	48	1130	500		1630
Chokewold Julia	6	ac	ac	19 " "	48	1150	500		1430
Rueckhoff Wm.	7	ft ac cont	$\frac{1}{2}$ ac	19 " "	26 50	500			1200
Steffenhagen Christ	7	ft ac cont	$\frac{1}{2}$ ac	19 " "	48	1220			1220
" " "	"	$\frac{1}{2}$ of $\frac{1}{2}$	ac	19 " "	48	1220			1220
" " "	8	cont cont	ac	19 " "	48	1260	620		2480
Steffenhagen Marie	8	$\frac{1}{2}$ $\frac{1}{2}$	ac	19 " "	48	2520	500		1830
Ehlerding Christ	9	$\frac{1}{2}$ ac	cont	19 " "	68 75	2160	630		3020
Miller Henry & Co	10	ft	cont	19 " "	67 75	2070			2440
Miller John Sr	11	ft	cont	19 " "	58	15			15
" " "	"	ft	cont	19 " "	2	25			25
" " "	"	acph ac	cont	19 " "	20	600	250		2170
Corbick Edw	12	cont	cont	19 " "	20	600	250		550

SECTION No. 15

Congressional Township No. 28, R. 15

SCALE: Forty rods to an inch, or ten rods to a square Congress Land, which is one acre square for a section.
 Number of acres in this section, according to the United States Survey.



Assessor's Plat-Book for

Proble

Township, No.

NAMES OF OWNERS	Number of Plots	DESCRIPTION	Section	Tract	Range	Acres	Block	Value of Land	Value of Improvements	Value of Land and Improvements
Callmeyer Fred.	1	sw 1/4	sw			16 24 13 30		2460		
" "	"	nph	sw			16 " " 30		2150	650	5260
Scheumann Ernst	2	nph	sw			16 " " 11 06 290		250		
" "	"	sw 1/4	sw			16 " " 9 53 230				770
Lickhoff Rudolph	3	sw	sw			16 " " 40		1000	900	
" "	"	ft ne	sw			16 " " 9		125		
" "	"	ft ne	sw			16 " " 19 41 475				1700
" "	"	ft ne	sw			16 " " 35		1060		1060
Sonrad Anna	4	ne	sw			16 " " 40		1260	450	
Scheumann August	5	se	sw			16 " " 20		600		
" "	"	sw 1/4	sw			16 " " 60		1820	770	2910
Callmeyer Wm	6	nph 1/2	sw			16 " " 34		1000		
" "	"	nph	sw			16 " " 6		4760		3780
" "	"	sw cor	sw			16 " " 40		1260		1260
Bultmeier Christ	7	ne	sw			16 " " 80		2500	600	3100
Kiefer Charles	8	1/2	sw			16 " " 40		1000	350	1350
Hartmann August	9	se	sw			16 " " 30		1500	930	1910
Rupright E. W.	10	nph	sw			16 " " 30				

SECTION No. 16

Congressional Township No. 28 , R. 13

SCALE: Forty rods to an inch, or ten rods to a square, Congress Land, which is one mile square for a section.
 Number of acres in this section, according to the United States Survey.

