

Adams

COUNTY, INDIANA, 1907.

Assessor's Plat-Book for

Blue Creek

Township, No.

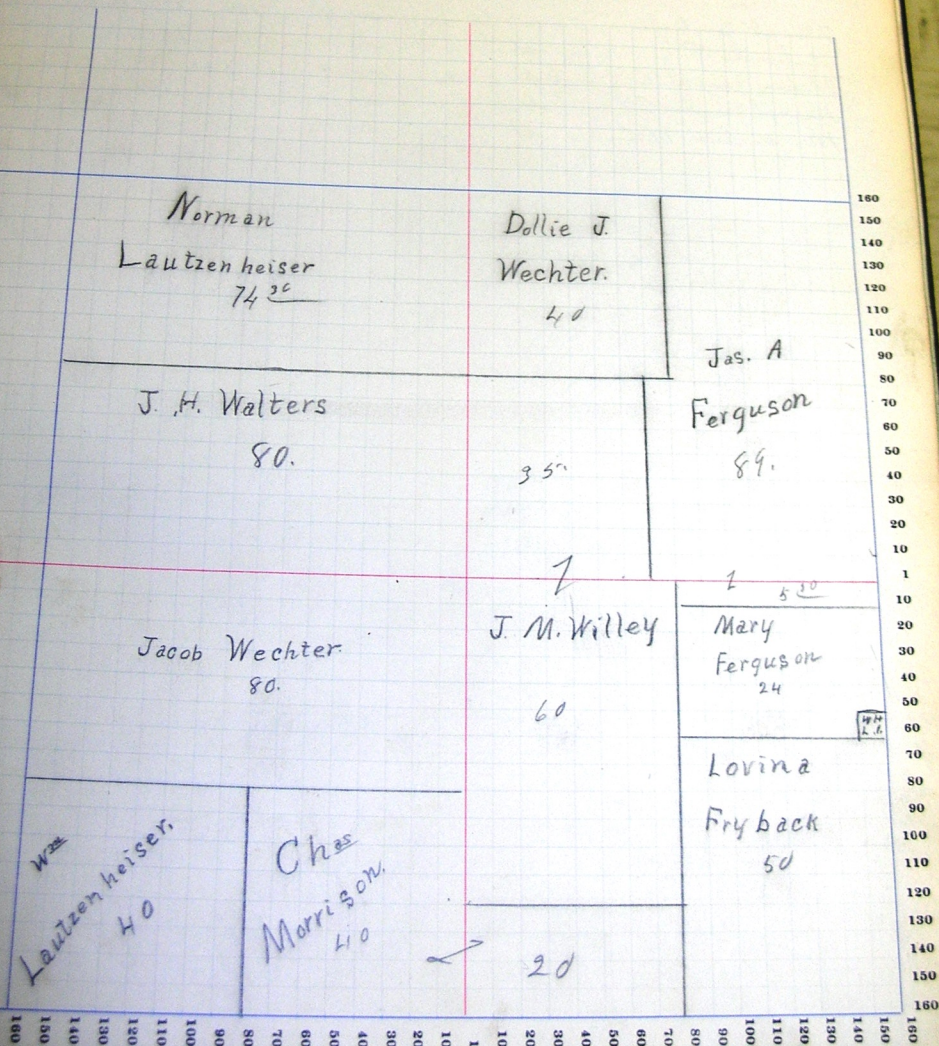
OFF. A. S. 1907. PLAT-BOOK, P. 2, INDIANAPOLIS.

NAMES OF OWNERS.	Number on Plat.	DESCRIPTION.	Section.	Township.	Range.	Acres.	Half-sections.	Value of Lands.	Value of Improvements.	Value of Lands and Improvements.
Ferguson James A.		pt $\frac{1}{2}$ ne	3	26	15	49	30	1396		
do		ne	3			40		1140	250	
do		npt $\frac{1}{2}$ se	3			5	50	114		
Wichter Jacob		pt $\frac{1}{2}$ sw	3			60		1740	600	
do		$\frac{1}{2}$ ne sw	3			20		580		
Willey James M.		pt $\frac{1}{2}$ se	3			60		1740	800	
do		pt $\frac{1}{2}$ ne	3			35		947		
Wichter Dollie J.		nw	3			40		1050	150	
Walters John H.		se	3			40		1120	200	
do		sw	3			40		1120		
Lantzkeheiser Norman		ne	3			37	15	1036	500	
do		nw	3			37	15	976		
Lantzkeheiser W. H.		sw	3			39		1092	40	
Tr. back Lavina		pt $\frac{1}{2}$ se	3			50		1425	50	
Ferguson Mary		spt ne se	3			24		684		
Movison Chas		$\frac{1}{2}$ $\frac{1}{2}$ sw	3			40		1140	850	
do		se sw se	3			20		570		
Langhery Willis H.		spt ne se	3			1		28	50	

SECTION No. 3

Congressional Township No. 26, R. 15

SCALE—Forty rods to an inch, or ten rods to a space, Congress Land, which is one mile square for a section.
Number of acres in this section, according to the United States Survey,

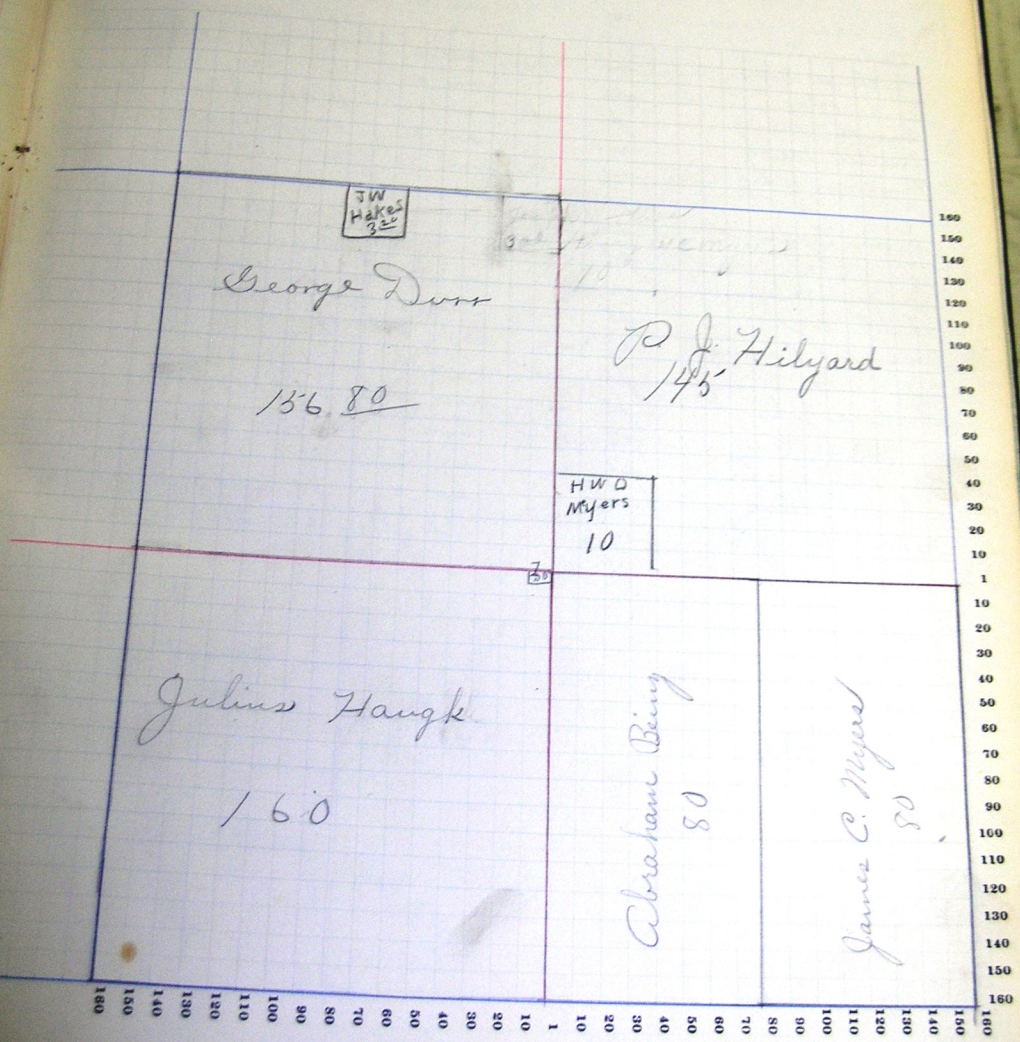


SECTION No. 4

Congressional Township No. _____, R. _____

SCALE—Forty rods to an inch, or ten rods to a space, Congress Land, which is one mile square for a section.
Number of acres in this section, according to the United States Survey.

Value of
land and
improvements



COUNTY, INDIANA, 1907.

Assessor's Plat-Book for Blue Creek

Township, No. 96

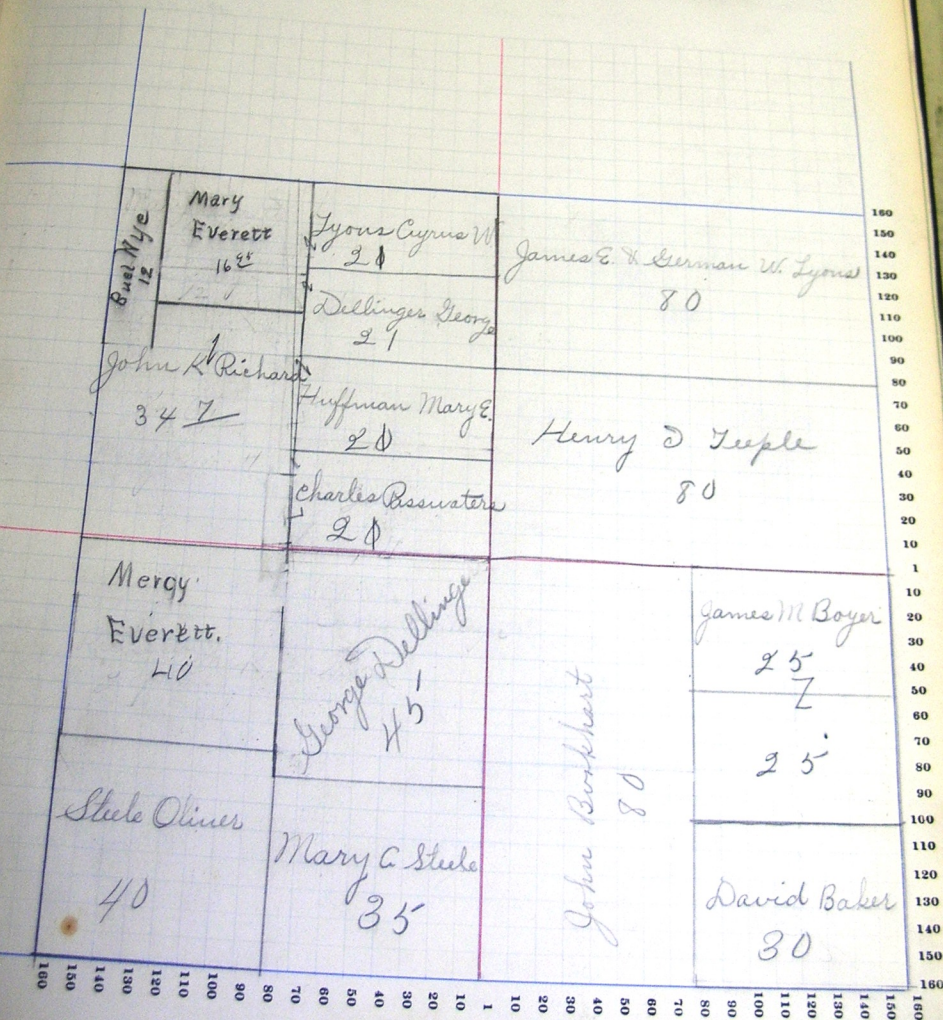
ON A PLAT-BOOK FOR THE PURPOSES OF

NAME OF OWNERS.	Number on Plat.	DESCRIPTION.	Section.	Township.	Range.	Acres.	Value of Land.	Value of Improvements.	Value of Land and Improvements.
Boyer James M.		pt ne se	5	26	15	25	687	300	
Boekhart John		nd pt e ₂ se	5			25	687		
Baker David		pt se	5			10	2160	150	
Dellinger George		pt se	5			30	525	200	
		pt e ₂ sw	5			45	1215	400	
		pt nw	5			21	525		
Everett Mary		pt nw nw	5			16	95	459	200
Everett Mercy		nw sw	5			40	1080	500	
Huffman Mary E.		n ₂ se nw	5			20	540	50	
		pt sw nw	5			1	27		
Lyon Cyrus W.		pt ne nw	5			20	560	80	
		pt nw nw	5			1	27		
Lyon James & Herman W.		n ₂ ne	5			80	2160	100	
Buel Nye		pt nw nw	5			12	380		
Passwater Charles		s ₂ se nw	5			20	540	200	
		pt sw nw	5			1	27		
Richard John K.		pt sw nw	5			29	7	793	80
		pt nw nw	5			5	135		
Stule Mary C.		pt e ₂ sw	5			35	962	150	
Stule Oliver		sw sw	5			40	1120	80	
Teple Henry D		s ₂ ne	5			80	2160	300	

Congressional Township No. _____, R.

SCALE—Forty rods to an inch, or ten rods to a space, Congress Land, which is one mile square for a section.

Number of acres in this section, according to the United States Survey,



Adams

COUNTY, INDIANA, 1907.

Assessor's Plat-Book for

Blue Creek

Township, No. 26

See a. Section 36, Book 17, Page 17

NAMES OF OWNERS	Number of Plats	DESCRIPTION.	Section	Tract	Range	Acres	Value of Land	Value of Improvements	Value of Land and Improvements
Stule Oliver		se	se	6	26 15	40	1140	80	
Brown Rosa		npt $\frac{1}{2}$	sw	6		45	1215	80	
or		npt ne	sw	6		7	190		
Hopple Henry		se	ne	6		40	1087	455	
Hook Emma		ne	se	6		40	1150	450	
Harman Sarah J.		spt $\frac{1}{2}$	sw	6		27	756	150	
Jacobs Margaret			nw	6		160	4360	450	
Ms Johnson		pt $\frac{1}{2}$	sw	6		72 41	1974	450	
Riley Lydia		$\frac{1}{2}$	se	6		80	2270	450	
Williams L. E. & Eliza 2		pt $\frac{1}{2}$	nw	6		20	550	450	
Williams L. R.		pt $\frac{1}{2}$	sw	6		60	1650	350	
Davis Charles		sw	ne	6		40	1040	50	

1907.

SECTION No. 6

Congressional Township No. 26, R.

SCALE—Forty rods to an inch, or ten rods to a space, Congress Land, which is one mile square for a section.
 Number of acres in this section, according to the United States Survey,

Margaret
Jacobs.
160

Johnson
Nye
72.40

C.W.F.
Davis.
40

Henry
Hopple
40

Rosa Brown.
52

S.J. Harmon
28

Lydia
Riley
80

Emma
Hook
40

L.R.
Williams.
60

L.G. & E.E.
Williams.
20.

Oliver
Steele
40

COUNTY, INDIANA, 1907.

Blue Creek

Township, No. 26

Number on File.	Number of Owners.	Description.	Section.	Township.	Range.	Acres.	Handreds.	Value of Lands.	Value of Improvements.	Value of Lands and Improvements.
		Stude Oliver	ne	ne	7	16	34	40	1140	500
		William L. R.	nw	nw	7		40	1100	200	
		Burnett Jas	$\frac{e}{2}$	se	7		50	2120	350	
		Davis R. P.	$\frac{nw}{2}$	se	7		80	2160	850	
		Frazier W.	se	ne	7		40	1840	200	
		Farrer Sarah & Nath L.	$\frac{e}{2}$	$\frac{e}{2}$	sw	7	40	1080	80	
		Merriman J. W.	sw	nw	7		40	1190	400	
		Myers John M. & Mary E.	$\frac{nw}{2}$	$\frac{e}{2}$	sw	7	40	1880	350	
		Headenstine Louisa	$\frac{w}{2}$	ne	7		80	2560	150	
		Headenstine Frank	$\frac{w}{2}$	sw	7		80	2170	600	
		Sturtey Andrew	$\frac{e}{2}$	$\frac{e}{2}$	nw	7	40	1120	350	
		Wolf Catherine	$\frac{w}{2}$	$\frac{e}{2}$	nw	7	40	1120	40	

No. 26

Congressional Township No. _____, R.

the
govern-
ment.

Value of
Lands and
Improvements

William L. R.	Stenely	Louisa Keadenstine	Olin Stiel
40	Andrew		40 a
J. W. Merriam	Wolfe	80	Traynor W.
40	Catharine		40
Frank Keadenstine	J. M. Myers	R. P. Davis	Jes Burnett
80	40		80
	S. G. Farver		
	40		

Adams

COUNTY, INDIANA, 1907.

Assessor's Plat-Book for Blue Creek

Township, No. 26

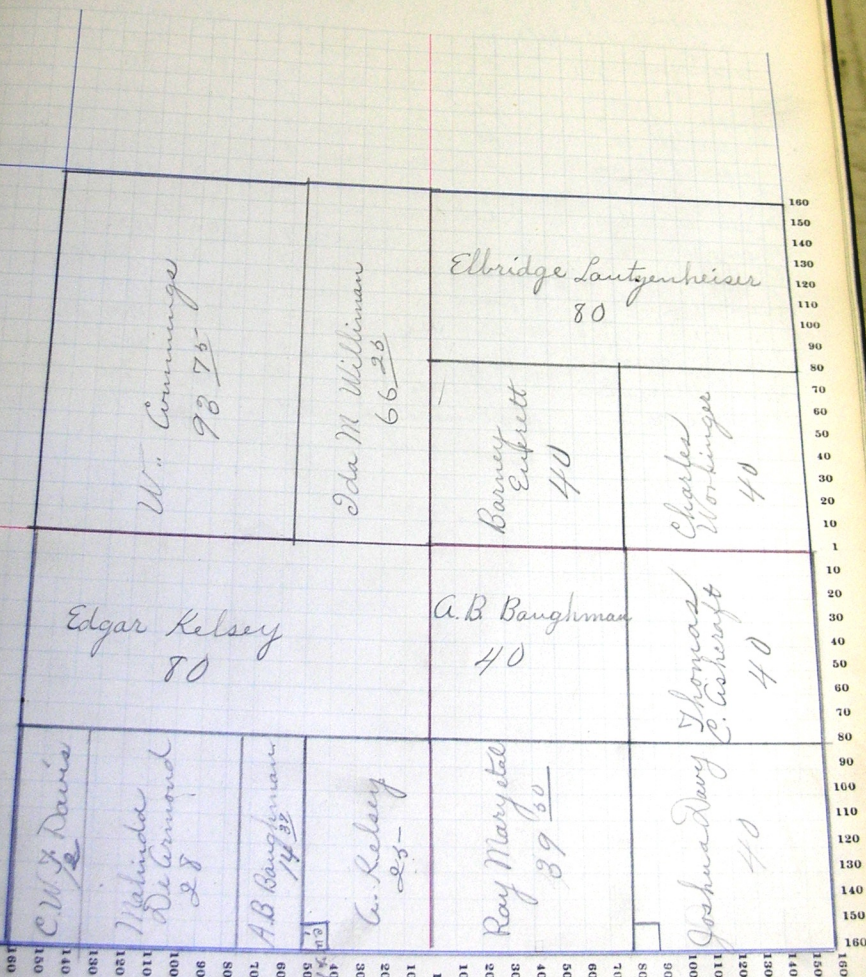
NAMES OF OWNERS.	Number in Plat.	DESCRIPTION.	Section.	Township.	Range.	Acres.	Mileage.	Value of Land.	Value of Improvements.	Value of Land and Improvements.
Cishcraft Thomas		ne se	8	26	15	40		1880	180	
Baughman A. B.		wpt se sw	8			14	37	378		
		nw se	8			40		1880	88	
Commins W.		pt nw	8			93	75	2529	380	
Davis Charles		sw cor sw	8			1		80	280	
		pt sw sw	8			12		324		
Everett Barney		sw ne	8			40		1880	80	
Kelsey Arthur S.		ept se sw	8			25		675	50	
Kelsey Edgar		n $\frac{1}{2}$ sw	8			80		2160	488	
Lantzehuiser Ellbridge		n $\frac{1}{2}$ ne	8			80		2280	350	
Worthington Charles		se ne	8			40		1880	280	
Williamson Ida M.		pt e $\frac{1}{2}$ nw	8			66	25	1815	150	
Ray Mary A. et al		sw se	8			39	50	883	280	
Dany Joshua		se se	8			40		1880		
DeArmond Malinda et al		pt sw sw	8			28		756		

1907.

SECTION No. 8

Congressional Township No. 26, R.

SCALE—Forty rods to an inch, or ten rods to a space, Congress Land, which is one mile square for a section.
 Number of acres in this section, according to the United States Survey,



Adams

COUNTY, INDIANA, 1907.

Assessor's Plat-Book for *Blue Creek*

Township, No. 26

NAMES OF OWNERS.	Number of Plats.	DESCRIPTION.	Section.	Township.	Range.	Acres.	Hindels.	Value of Land.	Value of Improvements.	Value of Land and Improvements.
Brant Marie		pt nw nw	9	26	15	55		137	400	
do		pt nw ne	9			10		275		
Blossom L. R.		sw sw	9			40		1060	400	
Campbell Sylvester	3	1/2 nw nw	9			20		550	250	
Ferguson Dye		1/2 nw nw	9			80		2240	700	
do		pt sw ne	9			87		836		
Harper Sarah		pt 1/2 sw	9			15		405		
Harper W. W.		pt 1/2 sw	9			15		405	50	
Harper Thomas W.		pt se nw	9			35		875		
Lantzenheiser Caron		w pt nw	9			50		1330	100	
Myers W. O.		s pt nw ne	9			80		420	200	
Myers Jacob		se se	9			40		1026	400	
Oakley James F.		pt nw se	9			3		60	100	
Oakley L. B.		ne se	9			40		1040		
do		pt 1/2 se	9			77		1730	850	
Young Frank		nw sw	9			40		1080	50	
Young Mary E.		1/2 se sw	9			20		510	100	
Farber Miles W.		pt meud 1/2 sw	9			30		780		

1907.

SECTION No. 9

Congressional Township No. 26, R.

SCALE—Forty rods to an inch, or ten rods to a space, Congress Land, which is one mile square for a section.
Number of acres in this section, according to the United States Survey,



Adams

COUNTY, INDIANA, 1907.

Assessor's Plat-Book for

Blue Creek

Township, No. 26

Wm. B. Simpson, Surveyor, Blue Creek, Wm. B. Simpson

NAMES OF OWNERS.	Number on Plat.	DESCRIPTION.	Section.	Township.	Range.	Acres.	Handbills.	Value of Land.	Value of Improvements.	Value of Land and Improvements.
Morrison Chas.		pt $\frac{1}{2}$ nw	10	26	15	36	50	940		
		spt ne nw	10			8		85		
Byers Christopher		$\frac{1}{2}$ se	10			80		2280	350	
		$\frac{1}{2}$ nw	10			40		1140		
Dellinger John L.		$\frac{1}{2}$ $\frac{1}{2}$ ne	10			40		1040	50	
Garnood Alexander		$\frac{1}{2}$ $\frac{1}{2}$ se	10			40		1140	150	
Harnbrich Miles W.		nw	10			40		1070	450	
Kauffman Christ		pt sw	10			80		2280	250	
King Pearl		se ne	10			40		1080	600	
Passwaters Nancy		nw	10			40		1040	200	
Stone Arthur A.		$\frac{1}{2}$ ne	10			80		2280	250	
Sims Wilbur & Sylvia		$\frac{1}{2}$ sw nw	10			20		550	150	
Sims Joseph		pt $\frac{1}{2}$ nw	10			43		1225	350	
		ne sw	10			37		1050		
		$\frac{1}{2}$ sw nw	10			20		560		

1907.

SECTION No. 10

Congressional Township No. 26, R.

SCALE—Forty rods to an inch, or ten rods to a space, Congress Land, which is one mile square for a section.
 Number of acres in this section, according to the United States Survey.

